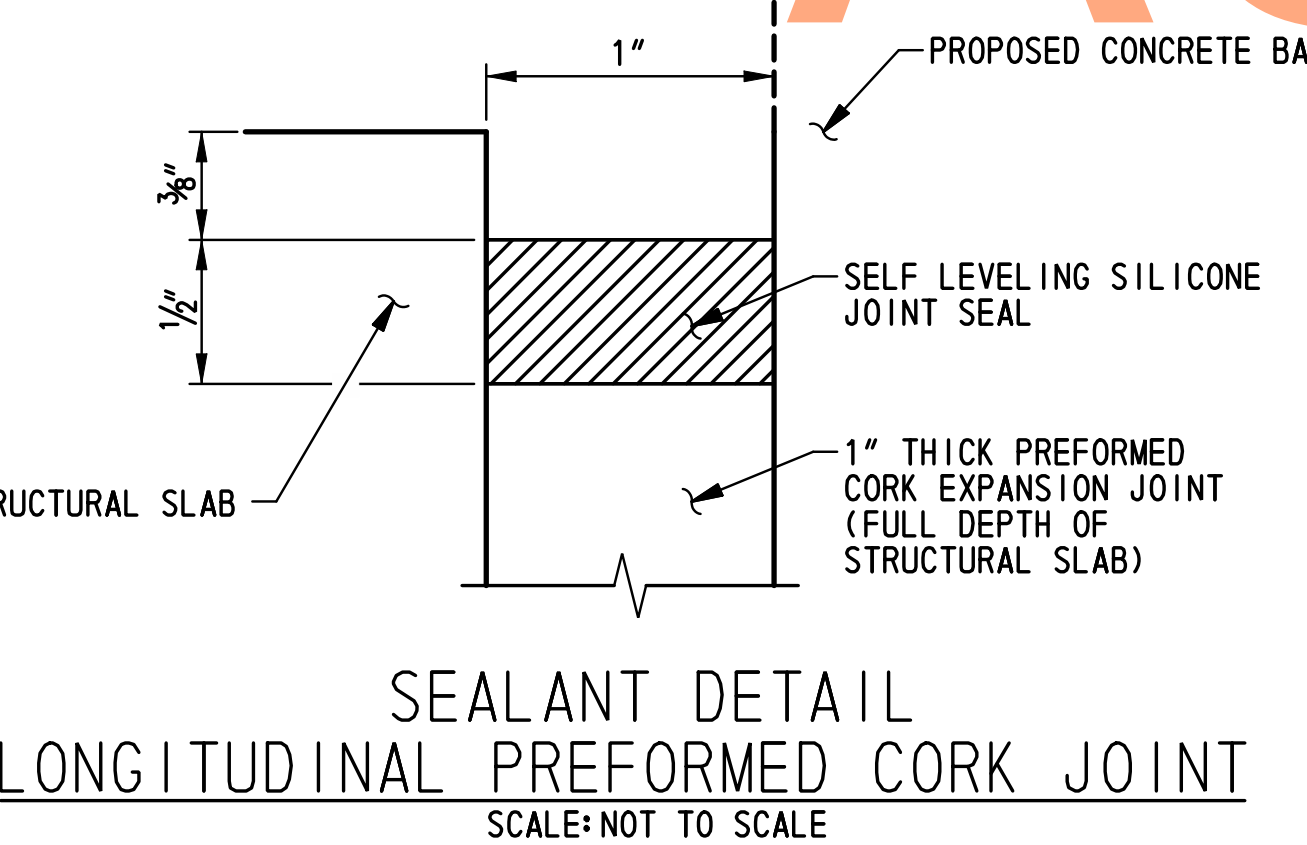
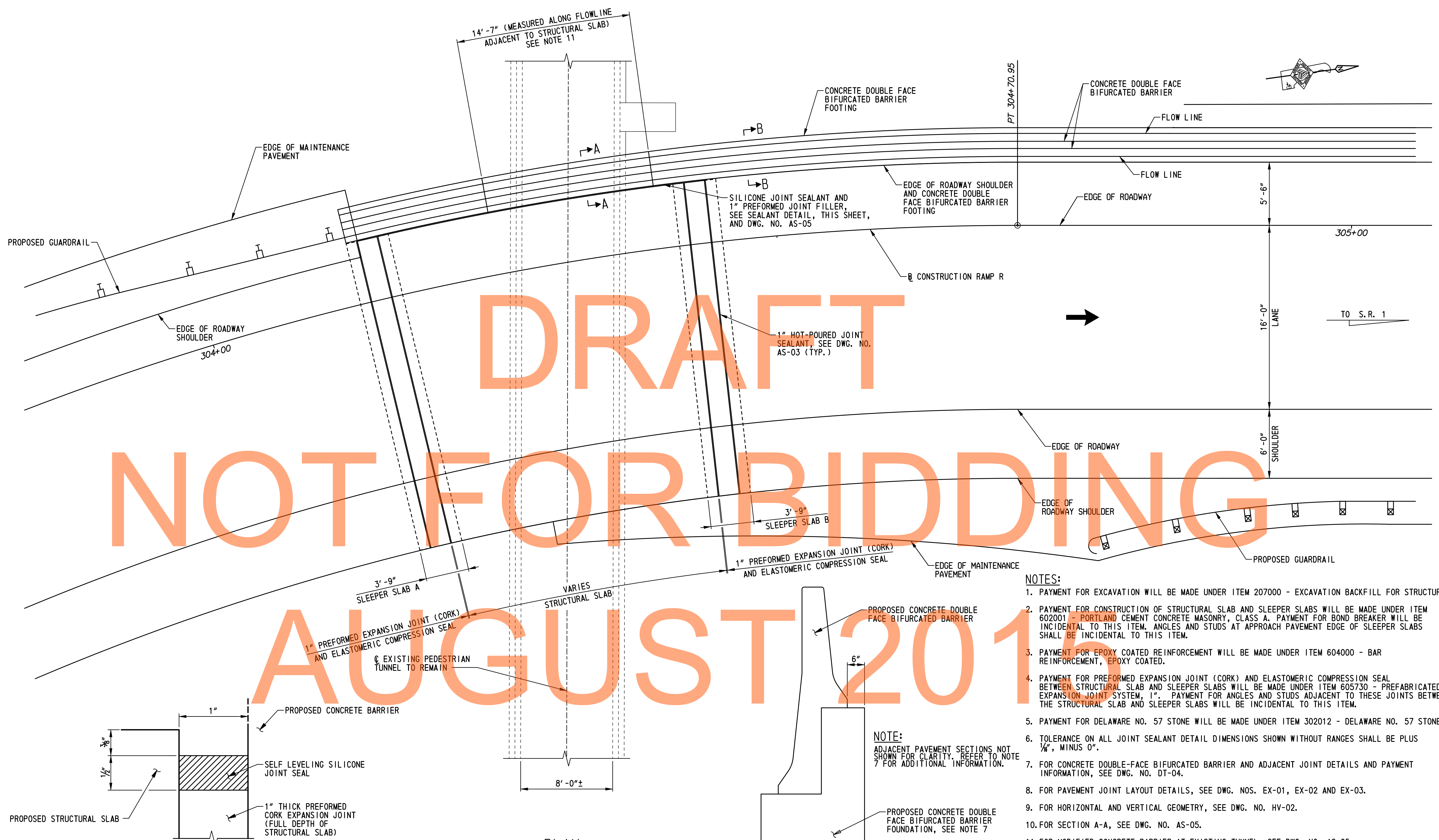


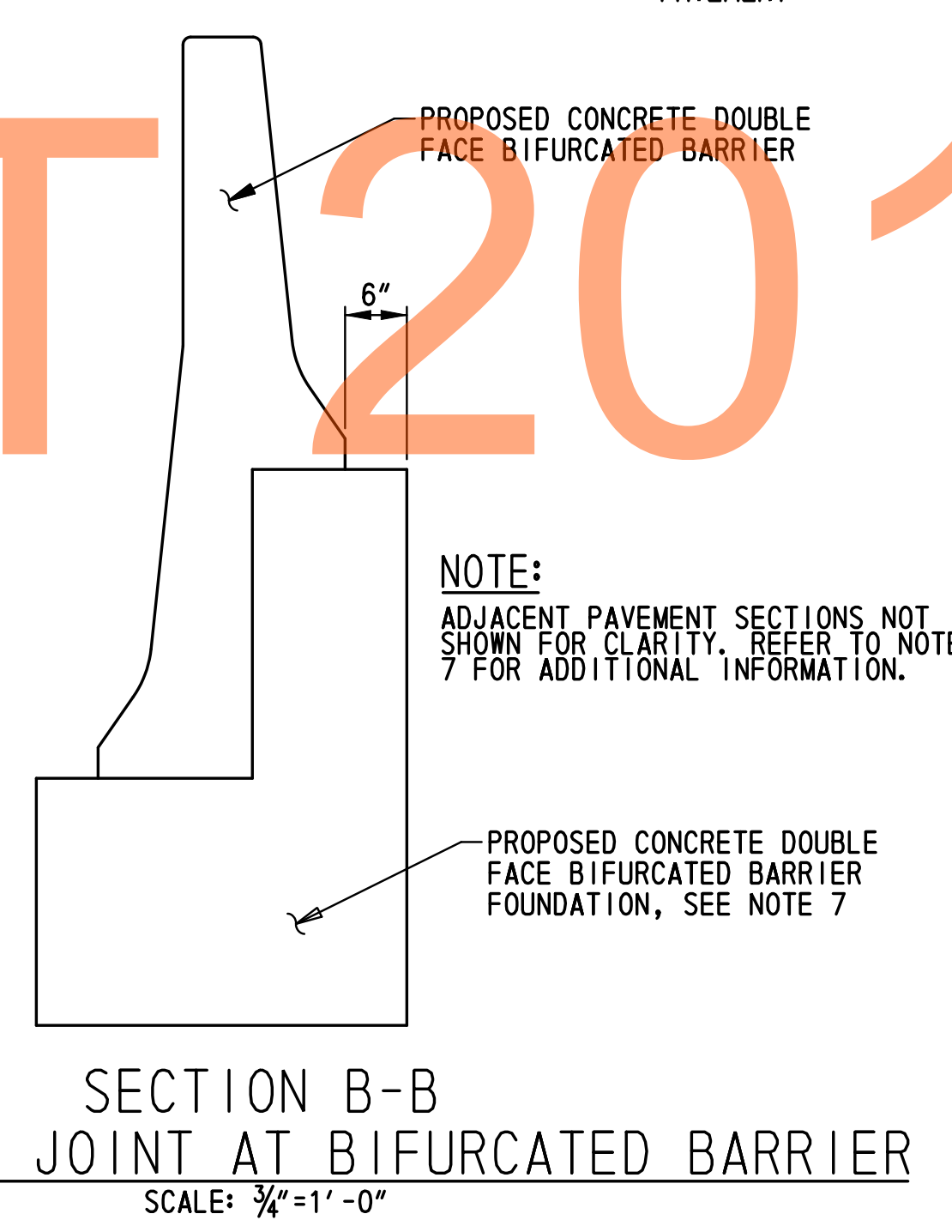
DRAFT

NOT FOR BIDDING

AUGUST 2016



PLAN
SCALE: 1/4" = 1' - 0"



- NOTES:**
- PAYMENT FOR EXCAVATION WILL BE MADE UNDER ITEM 207000 - EXCAVATION BACKFILL FOR STRUCTURES.
 - PAYMENT FOR CONSTRUCTION OF STRUCTURAL SLAB AND SLEEPER SLABS WILL BE MADE UNDER ITEM 602001 - PORTLAND CEMENT CONCRETE MASONRY, CLASS A. PAYMENT FOR BOND BREAKER WILL BE INCIDENTAL TO THIS ITEM. ANGLES AND STUDS AT APPROACH PAVEMENT EDGE OF SLEEPER SLABS SHALL BE INCIDENTAL TO THIS ITEM.
 - PAYMENT FOR EPOXY COATED REINFORCEMENT WILL BE MADE UNDER ITEM 604000 - BAR REINFORCEMENT, EPOXY COATED.
 - PAYMENT FOR PREFORMED EXPANSION JOINT (CORK) AND ELASTOMERIC COMPRESSION SEAL BETWEEN STRUCTURAL SLAB AND SLEEPER SLABS WILL BE MADE UNDER ITEM 605730 - PREFABRICATED EXPANSION JOINT SYSTEM, 1". PAYMENT FOR ANGLES AND STUDS ADJACENT TO THESE JOINTS BETWEEN THE STRUCTURAL SLAB AND SLEEPER SLABS WILL BE INCIDENTAL TO THIS ITEM.
 - PAYMENT FOR DELAWARE NO. 57 STONE WILL BE MADE UNDER ITEM 302012 - DELAWARE NO. 57 STONE.
 - TOLERANCE ON ALL JOINT SEALANT DETAIL DIMENSIONS SHOWN WITHOUT RANGES SHALL BE PLUS 1/8", MINUS 0".
 - FOR CONCRETE DOUBLE-FACE BIFURCATED BARRIER AND ADJACENT JOINT DETAILS AND PAYMENT INFORMATION, SEE DWG. NO. DT-04.
 - FOR PAVEMENT JOINT LAYOUT DETAILS, SEE DWG. NOS. EX-01, EX-02 AND EX-03.
 - FOR HORIZONTAL AND VERTICAL GEOMETRY, SEE DWG. NO. HV-02.
 - FOR SECTION A-A, SEE DWG. NO. AS-05.
 - FOR MODIFIED CONCRETE BARRIER AT EXISTING TUNNEL, SEE DWG. NO. AS-05.
 - SELF-LEVELING SILICONE JOINT SEALANT SHALL BE OF TYPE SL IN ACCORDANCE WITH ASTM D5893.
 - PAYMENT FOR 1" SILICONE JOINT SEALANT AND PREFORMED JOINT FILLER BETWEEN STRUCTURAL SLAB AND CONCRETE DOUBLE-FACE BIFURCATED BARRIER SHALL BE INCIDENTAL TO ITEM 602001 - PORTLAND CEMENT CONCRETE MASONRY, CLASS A.

p:\1653-000\cadd\bridge\AS01U301_10.dgn
 8/17/2016 10:47:42 AM

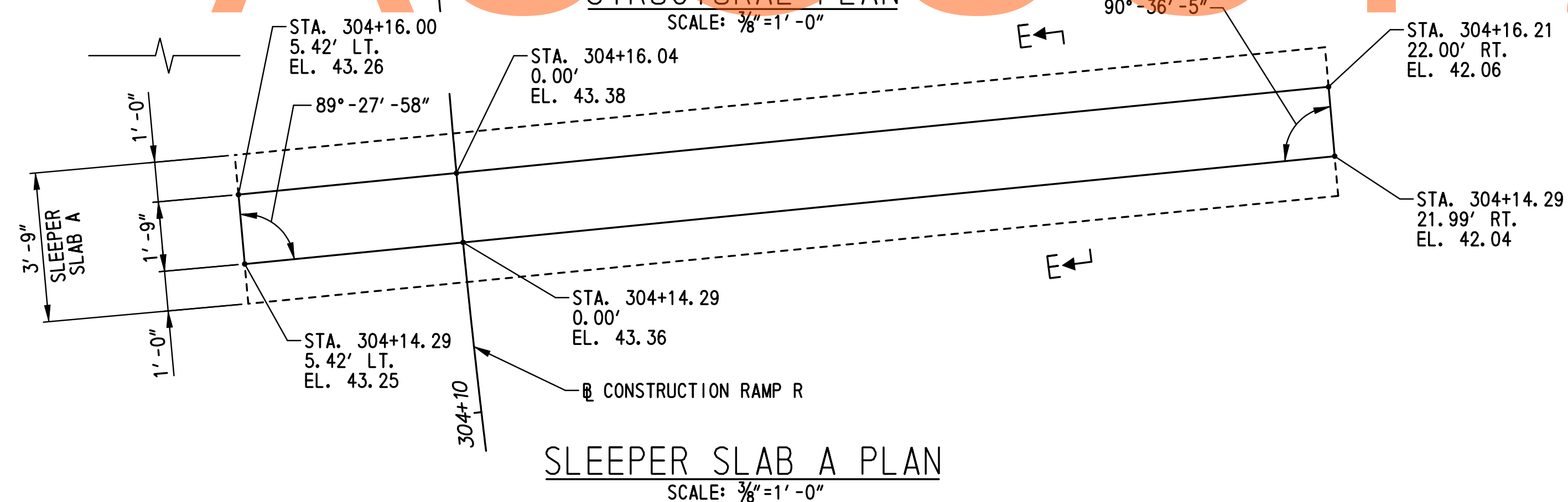
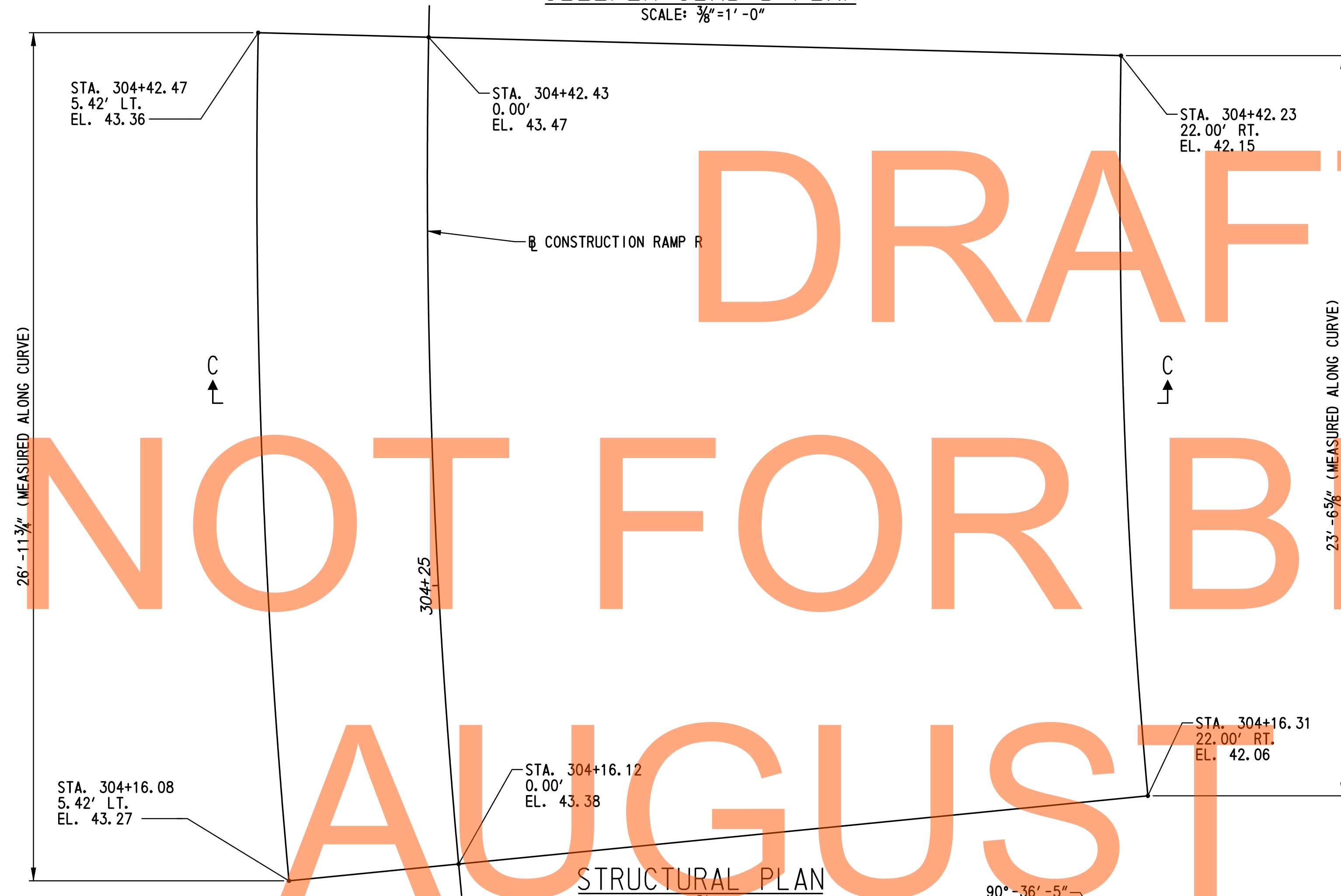
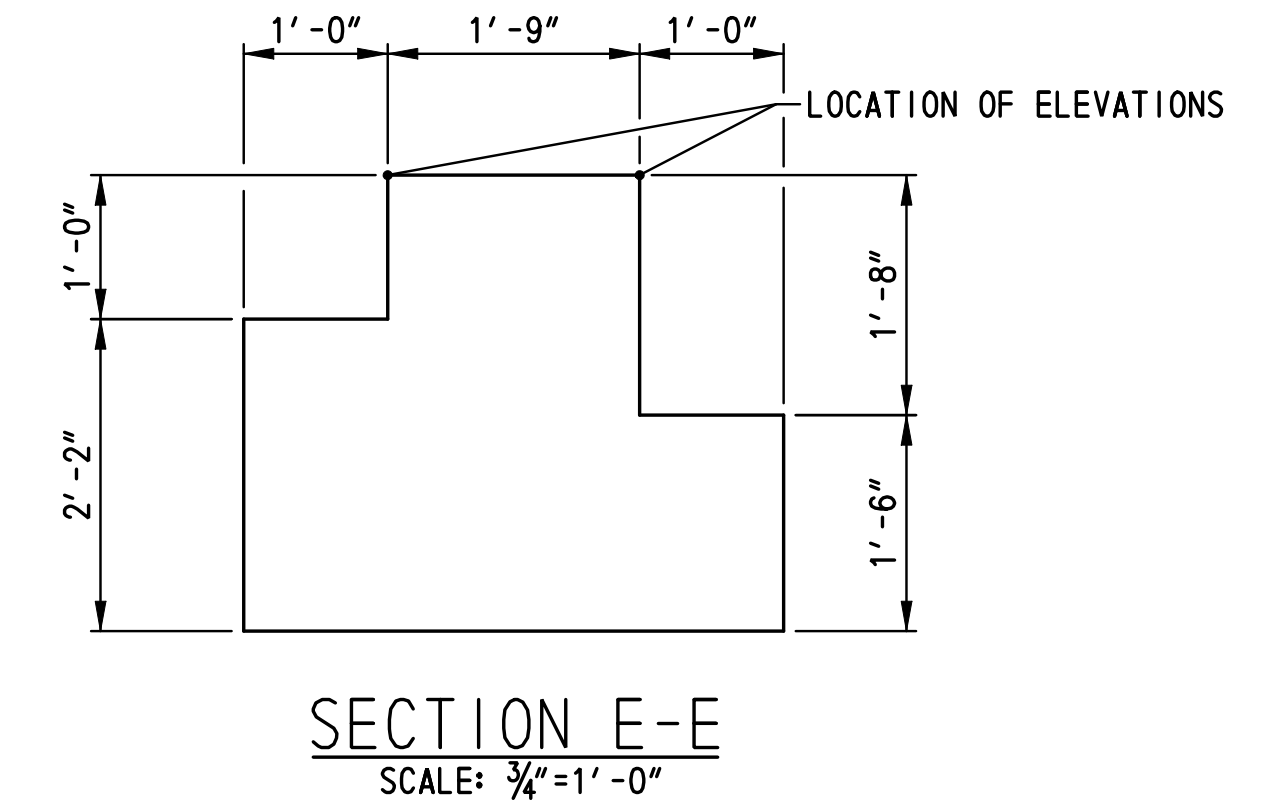
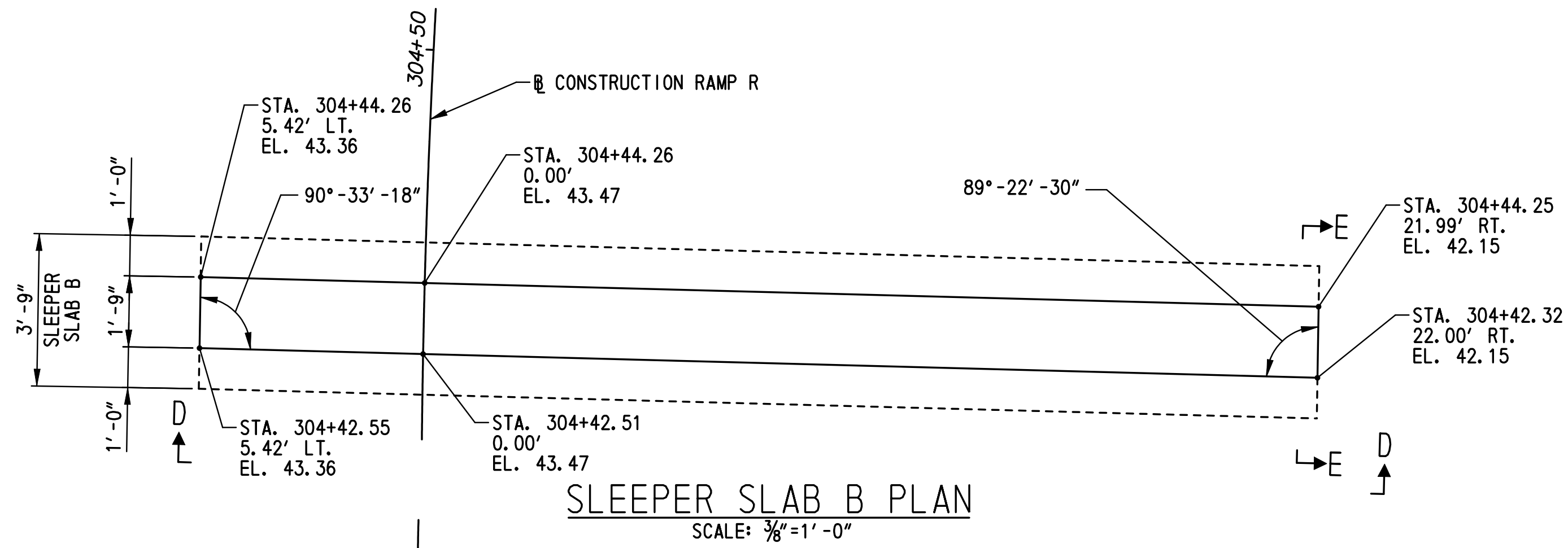
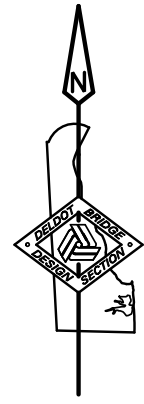
ADDENDUMS / REVISIONS

SCALE: AS NOTED

US 13 & PORT PENN RD INTERSECTION

CONTRACT	BRIDGE NO.
T201011302	
COUNTY	DESIGNED BY: K.M.L.
NEW CASTLE	CHECKED BY: J.A.G.

STRUCTURAL SLAB AND SLEEPER SLABS PLAN - 1	AS-01
	SHEET NO.
	77
TOTAL SHTS.	179



DRAFT
NOT FOR BIDDING
AUGUST 2015

NOTES:

1. FOR STRUCTURAL SLAB AND SLEEPER SLAB NOTES SEE DWG. NO. AS-01.
2. FOR EXPANSION JOINT DETAILS SEE DETAIL B ON DWG. NO. AS-03.
3. FOR SECTION C-C AND VIEW D-D SEE DWG. NO. AS-03.
4. FOR HORIZONTAL AND VERTICAL GEOMETRY, SEE DWG. NO. HV-02.

p:\1653-000\cadd\bridge\AS02\0301_ID.dgn 8/17/2015 10:47:53 AM



ADDENDUMS / REVISIONS

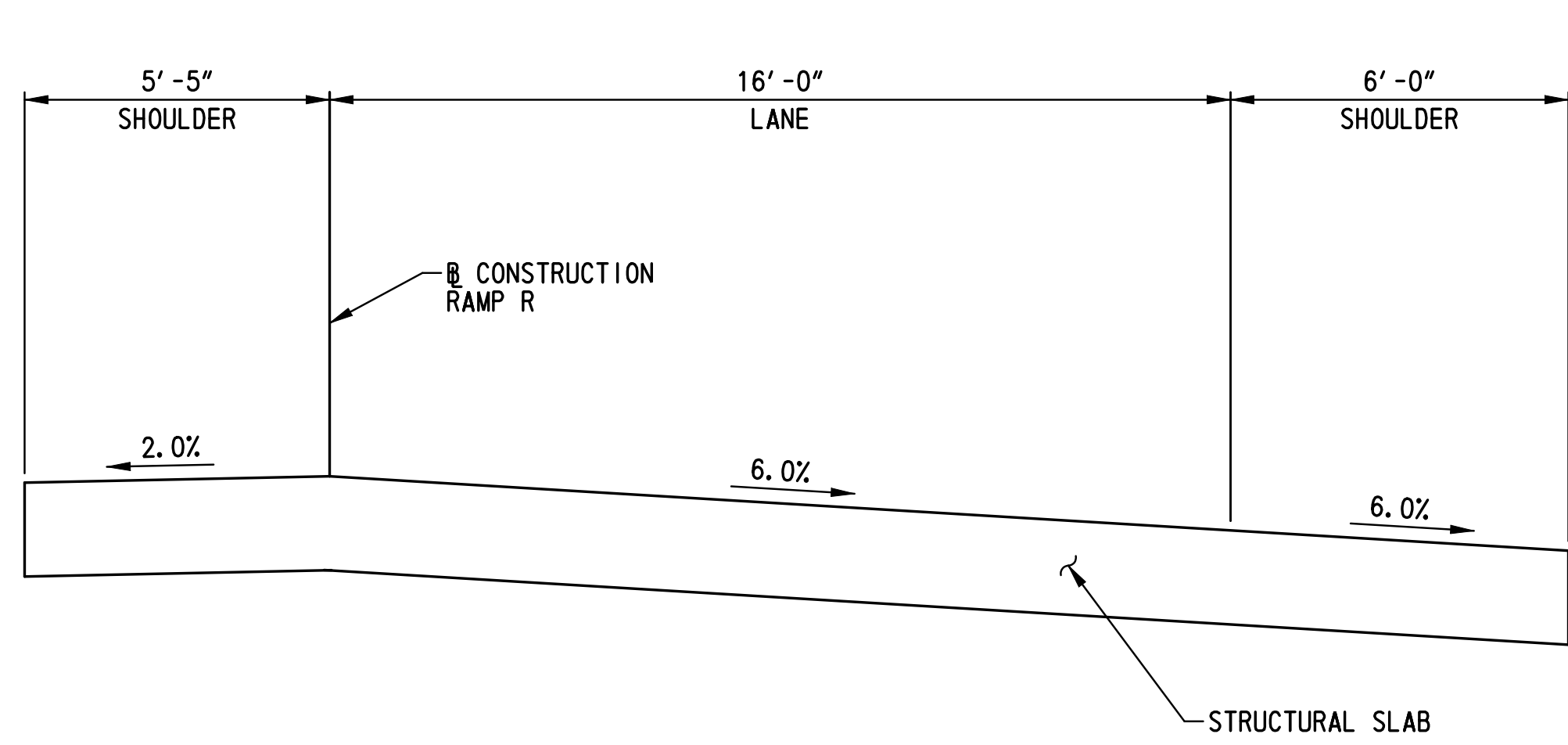
SCALE: AS NOTED

US 13 & PORT PENN RD INTERSECTION

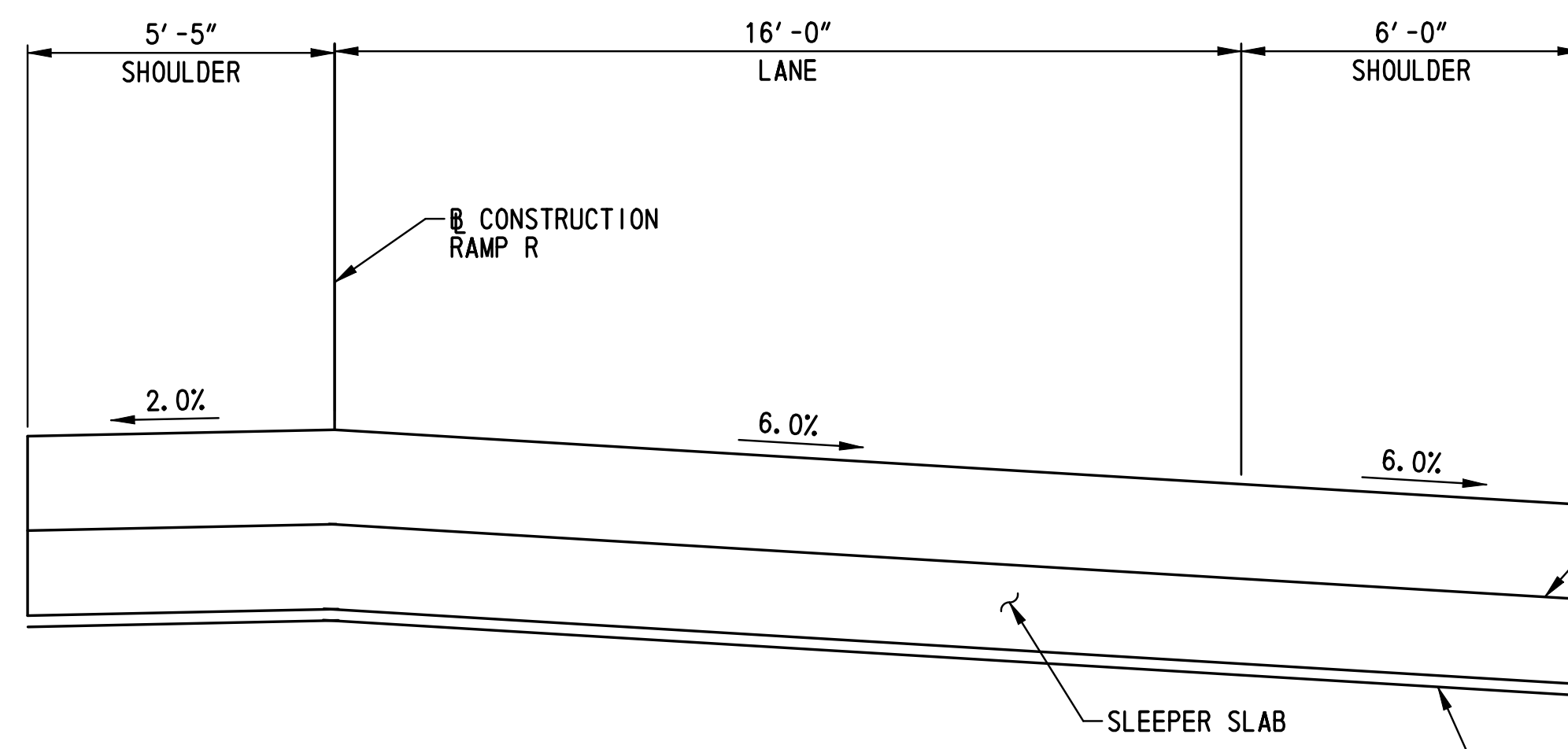
CONTRACT	BRIDGE NO.
T201011302	
COUNTY	DESIGNED BY: K.M.L.
NEW CASTLE	CHECKED BY: J.A.G.

STRUCTURAL SLAB AND SLEEPER SLABS PLAN - 2

AS-02
SHEET NO.
78
TOTAL SHTS.
179

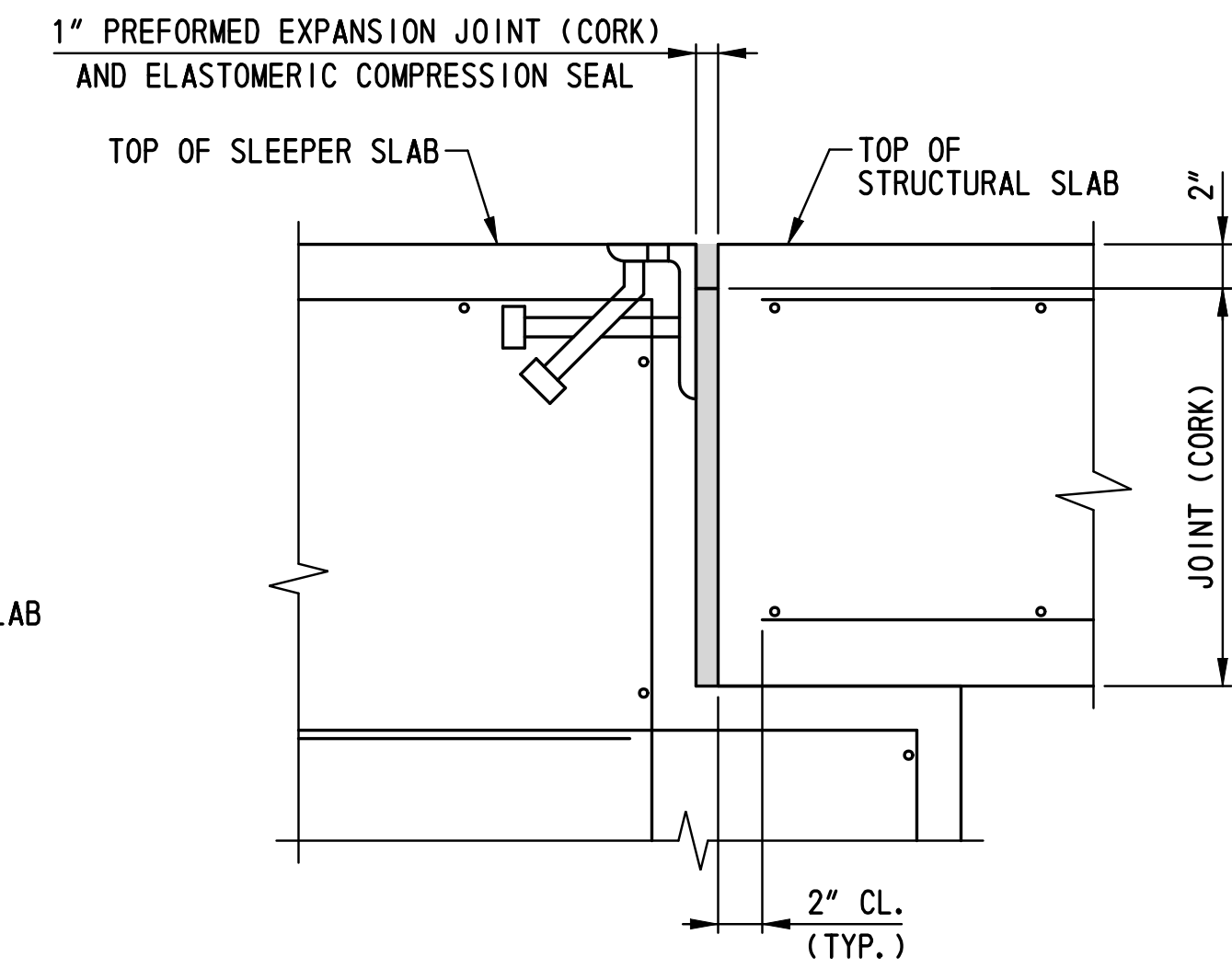


SECTION C-C
SCALE: 3/8"=1'-0"

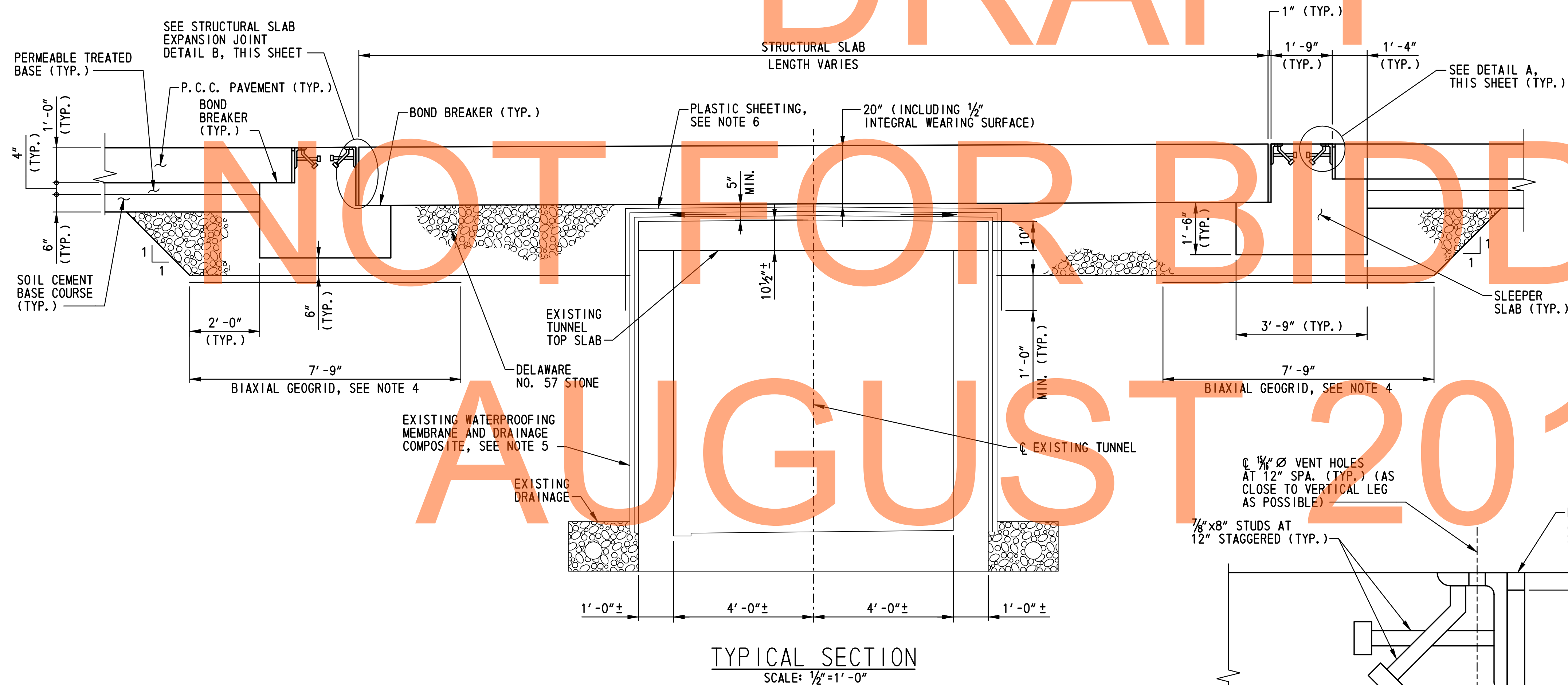


VIEW D-D
SCALE: 3/8"=1'-0"

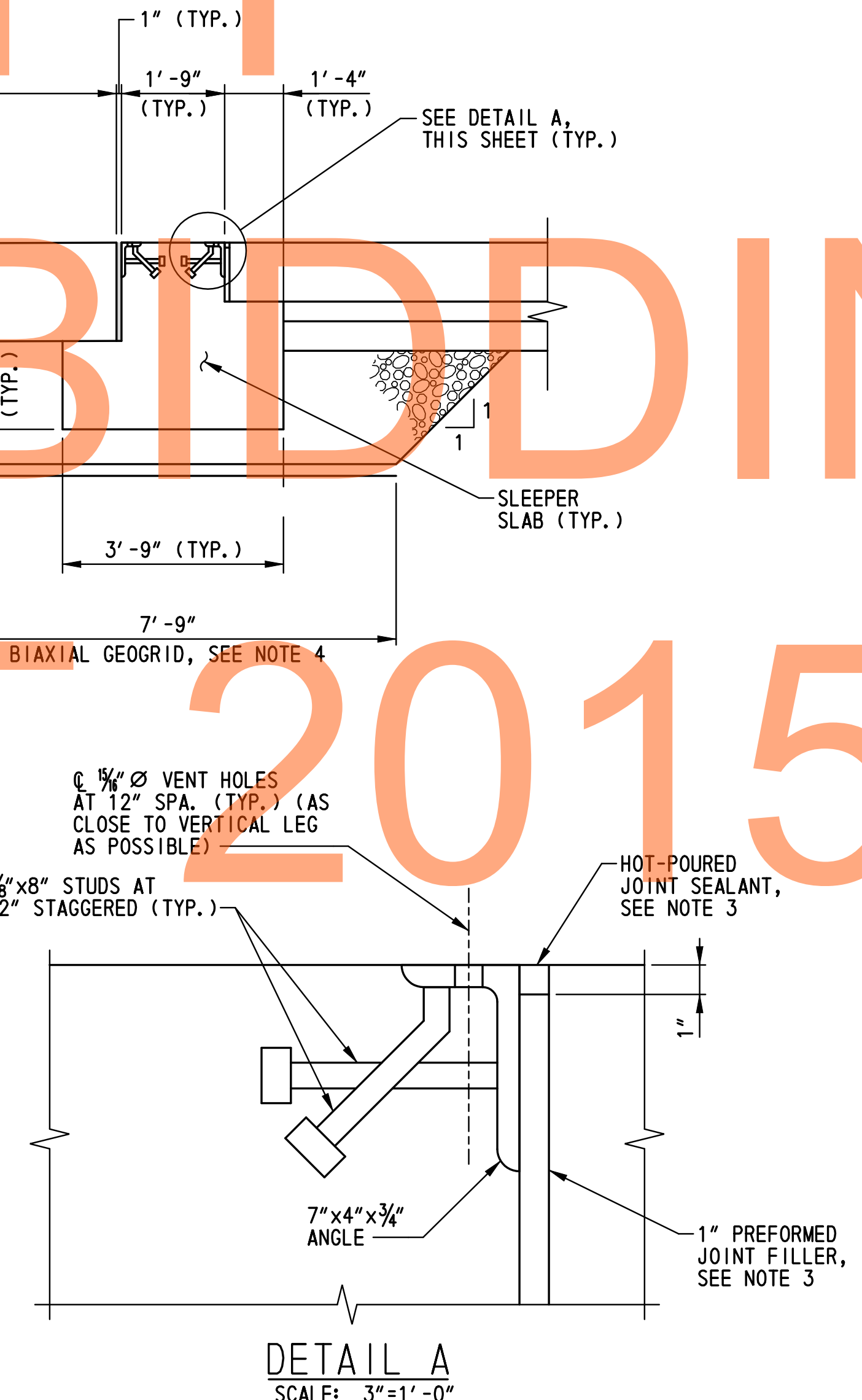
NOTE:
SLEEPER SLAB B SHOWN SLEEPER SLAB A SIMILAR.



DETAIL B
SCALE: 1 1/2"=1'-0"



TYPICAL SECTION
SCALE: 1/2"=1'-0"



DETAIL A
SCALE: 3"=1'-0"

- NOTES:**
- FOR CONCRETE BARRIER DETAILS. SEE DWG. NO. DT-04.
 - FOR LOCATIONS OF SECTION C-C AND VIEW D-D, SEE DWG. NO. AS-02
 - PAYMENT FOR JOINT ANGLES AT APPROACH PAVEMENT EDGE OF SLEEPER SLAB, PREFORMED JOINT FILLER, AND HOT-POURED JOINT SEALANT SHALL BE INCIDENTAL TO ITEM 602001 - PORTLAND CEMENT CONCRETE MASONRY, CLASS A.
 - BIAXIAL GEOGRID SHALL BE AN INTEGRALLY FORMED STRUCTURAL GEOGRID MANUFACTURED OF A STRESS RESISTANT POLYPROPYLENE MATERIAL WITH POSITIVE MECHANICAL INTERLOCK FOR LOAD TRANSFER. THE BIAXIAL GEOGRID SHALL MEET THE FOLLOWING MINIMUM REQUIREMENTS:

APERTURE DIMENSIONS	1.8 IN
MINIMUM RIB THICKNESS	0.05 IN
TRUE INITIAL MODULUS IN USE	24,000 LB/FT
TRUE TENSILE STRENGTH AT 2% STRAIN	380 LB/FT
TRUE TENSILE STRENGTH AT 5% STRAIN	720 LB/FT
JUNCTION EFFICIENCY	93 %
FLEXURAL STIFFNESS	450,000 MG-CM
APERTURE STABILITY	5.8 KG-CM/DEG
RESISTANCE TO INSTALLATION DAMAGE	
IN CLAYEY SAND	91%
IN WELL-GRADED SAND	83%
IN POORLY-GRADED GRAVEL	72%
RESISTANCE TO LONG-TERM DEGRADATION	100%

 PAYMENT FOR BIAXIAL GEOGRID SHALL BE INCIDENTAL TO ITEM 602001 - PORTLAND CEMENT CONCRETE MASONRY, CLASS A.
 - EXTREME CAUTION SHALL BE USED TO AVOID DAMAGING THE COMPOSITE WATERPROOFING MEMBRANE OF THE EXISTING PEDESTRIAN TUNNEL. NON-MECHANIZED EXCAVATION WILL BE REQUIRED WITHIN 1' OF THE TOP OF TUNNEL. BARRIER FOOTING AND STRUCTURAL SLAB SHALL NOT BE PLACED DIRECTLY ON TOP OF TUNNEL. IF THE TUNNEL IS EXPOSED DURING EXCAVATION, A 3-PLY ROOFING PAPER BOND BREAKER SHALL BE PLACED BETWEEN THE TOP OF TUNNEL AND THE BOTTOM OF THE BARRIER FOOTING OR STRUCTURAL SLAB. PAYMENT FOR 3-PLY ROOFING PAPER SHALL BE INCIDENTAL TO ITEM 602001 - PORTLAND CEMENT CONCRETE MASONRY, CLASS A.
 - ONE (1) LAYER OF PLASTIC SHEETING SHALL BE PLACED ON TOP OF THE EXISTING WATERPROOFING MEMBRANE BEFORE PLACING THE DELAWARE NO. 57 STONE. PAYMENT FOR PLASTIC SHEETING SHALL BE INCIDENTAL TO ITEM 602001 - PORTLAND CEMENT CONCRETE MASONRY, CLASS A.

DRAFT

NOT FOR BIDDING

AUGUST 2015

p:\1653-000\contract\1653\cadd\bridge\AS030301_ID.dgn 8/17/2012 10:47:44 AM

ADDENDUMS / REVISIONS	

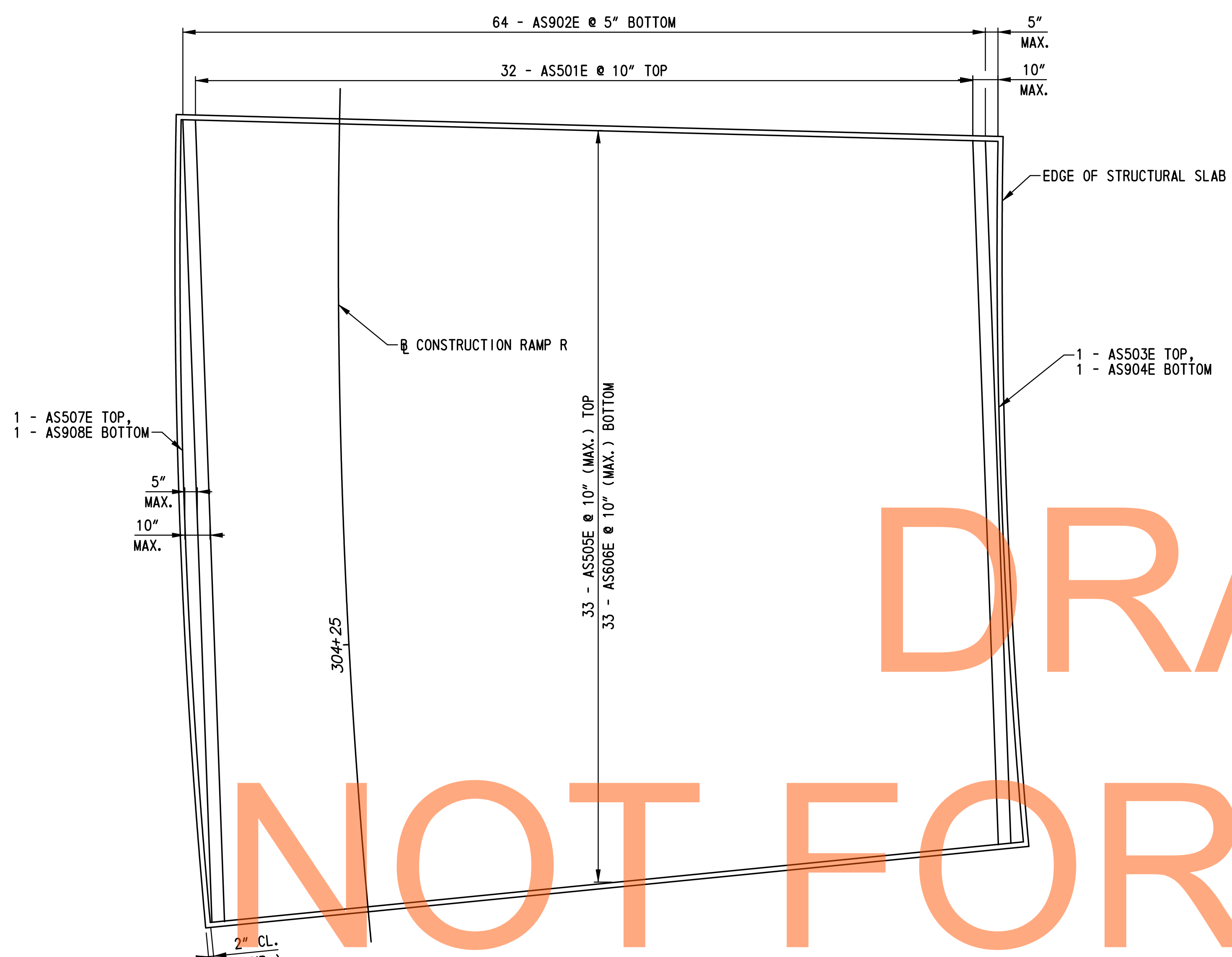
SCALE: AS NOTED

US 13 & PORT PENN RD INTERSECTION

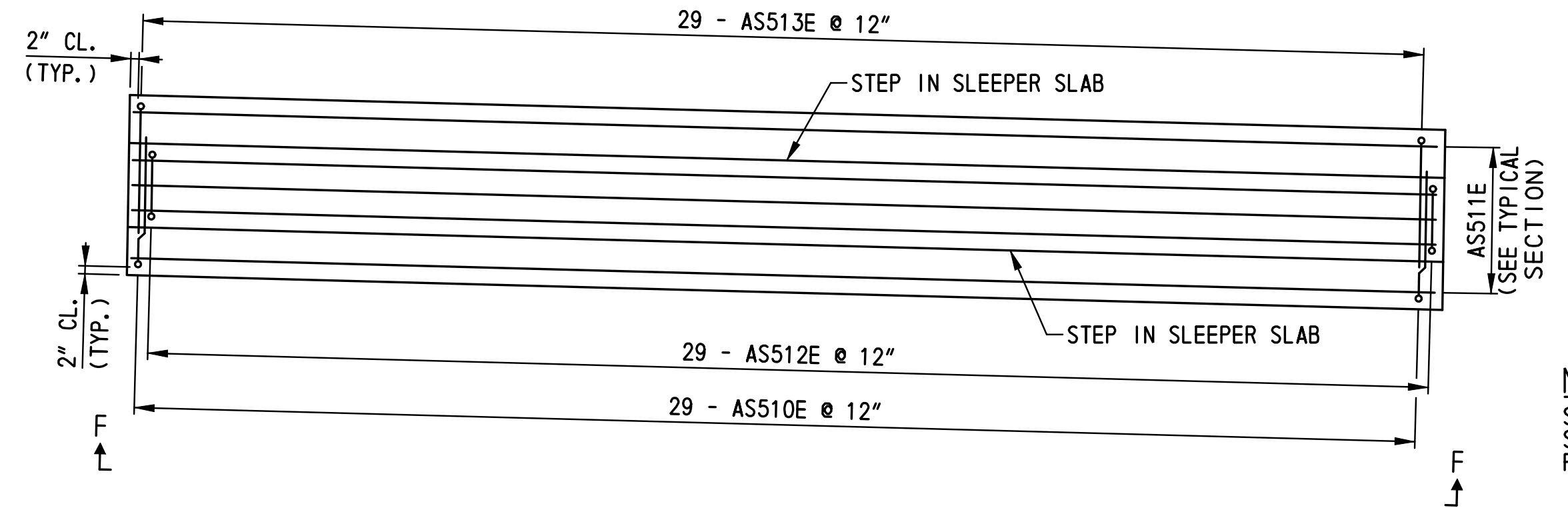
CONTRACT	BRIDGE NO.
T201011302	
COUNTY	DESIGNED BY: K.M.L.
NEW CASTLE	CHECKED BY: J.A.G.

STRUCTURAL SLAB AND SLEEPER SLABS SECTIONS AND VIEW

AS-03
SHEET NO.
79
TOTAL SHTS.
179

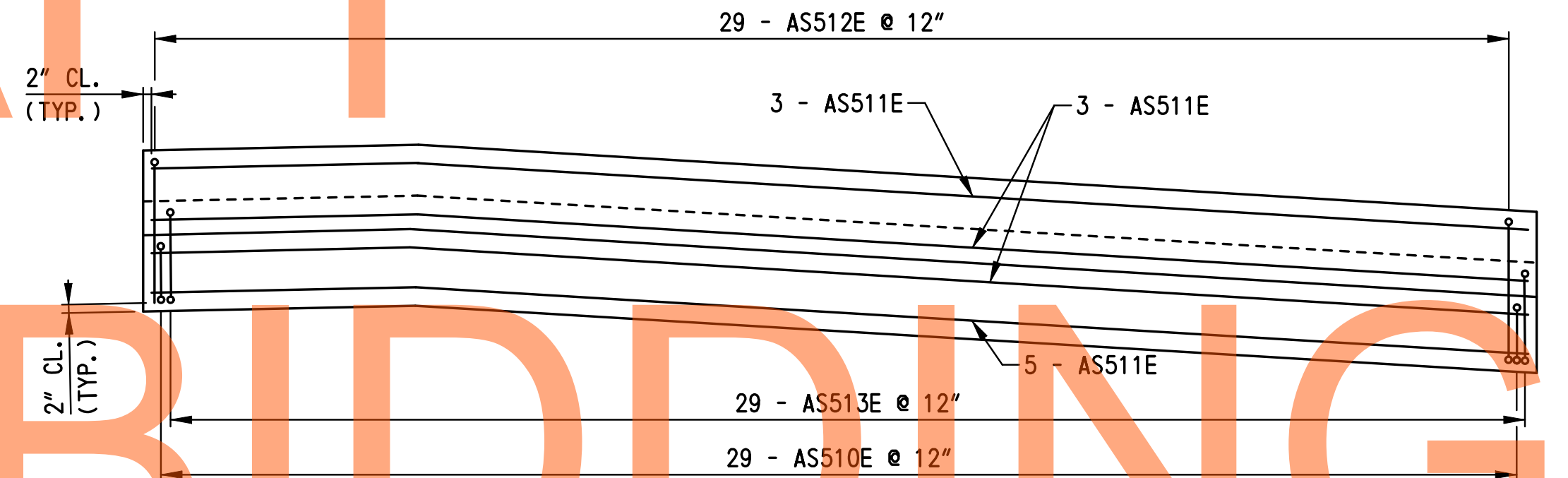


STRUCTURAL SLAB PLAN REINFORCEMENT
SCALE: 3/8"=1'-0"

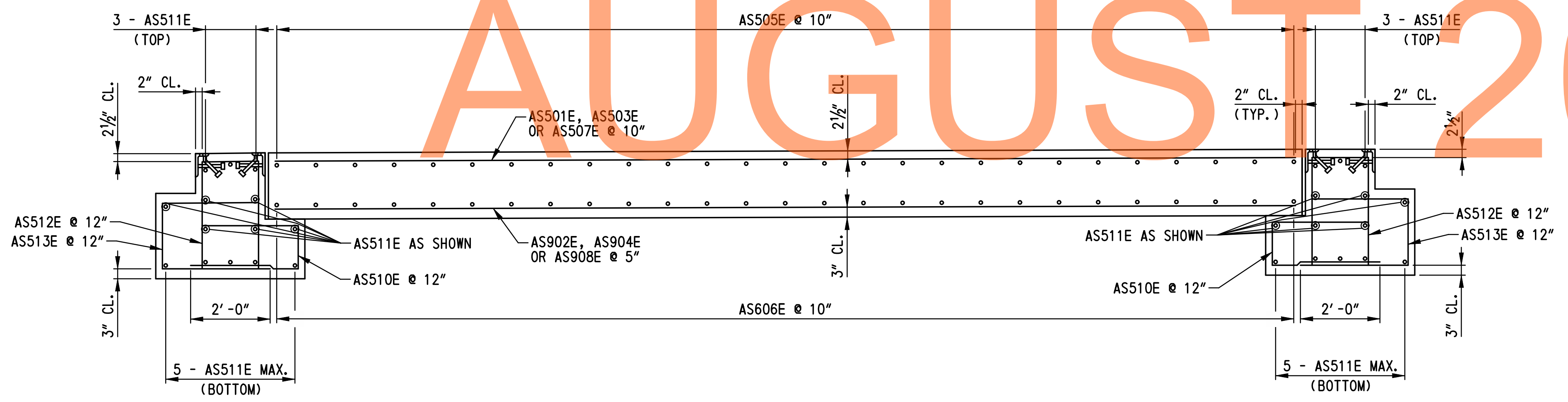


SLEEPER SLAB PLAN REINFORCEMENT
SCALE: 3/8"=1'-0"

NOTE:
SLEEPER SLAB B REINFORCEMENT SHOWN. SLEEPER SLAB A REINFORCEMENT SIMILAR.



VIEW F-F REINFORCEMENT
SCALE: 3/8"=1'-0"



TYPICAL SECTION REINFORCEMENT
SCALE: 1/2"=1'-0"

NOTES:
1. FOR STRUCTURAL SLAB AND SLEEPER SLAB NOTES, SEE DWG. NO. AS-01.

DELAWARE DEPARTMENT OF TRANSPORTATION

ADDENDUMS / REVISIONS

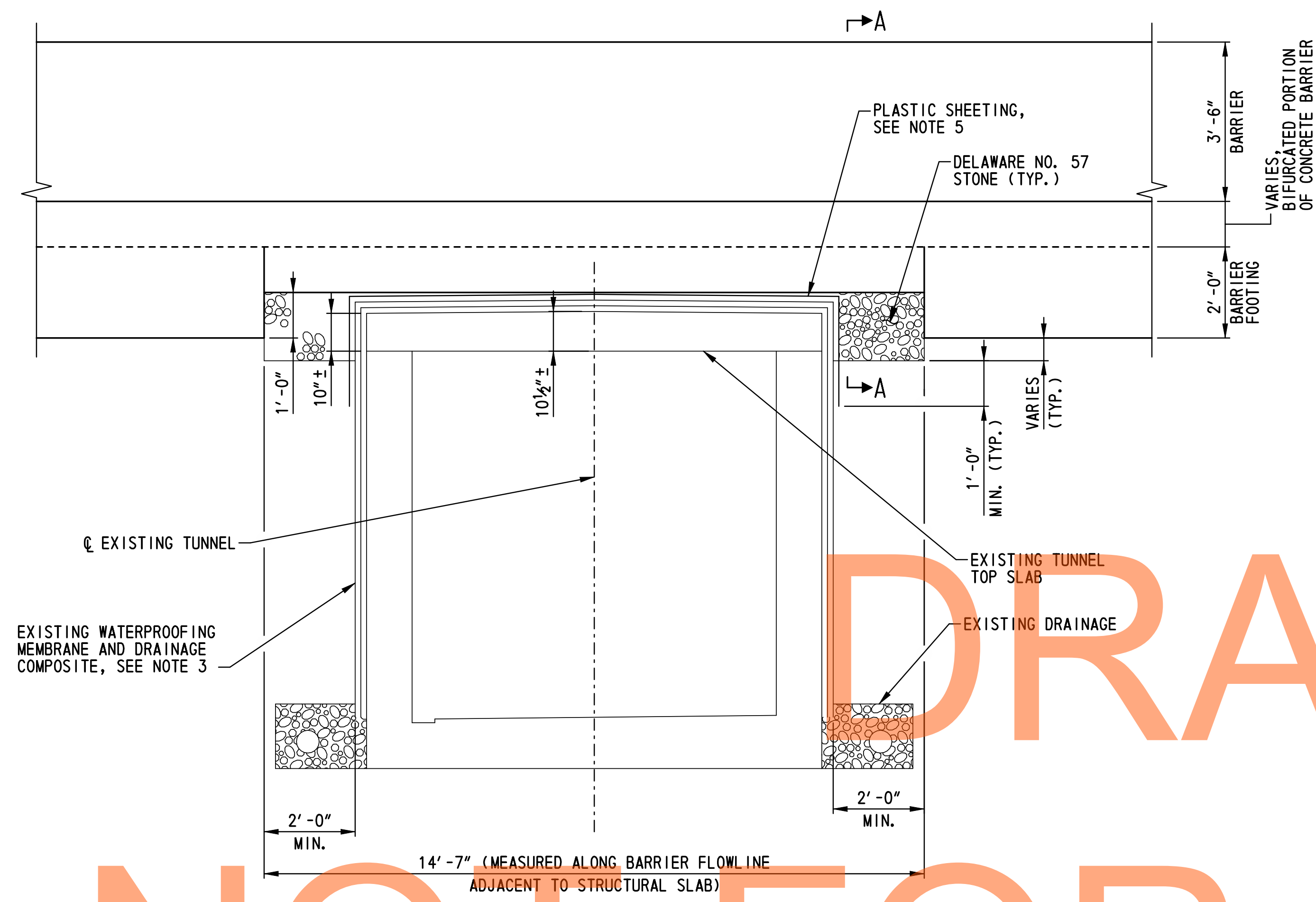
US 13 & PORT PENN RD INTERSECTION

CONTRACT	BRIDGE NO.
T201011302	
COUNTY	DESIGNED BY: K.M.L.
NEW CASTLE	CHECKED BY: J.A.G.

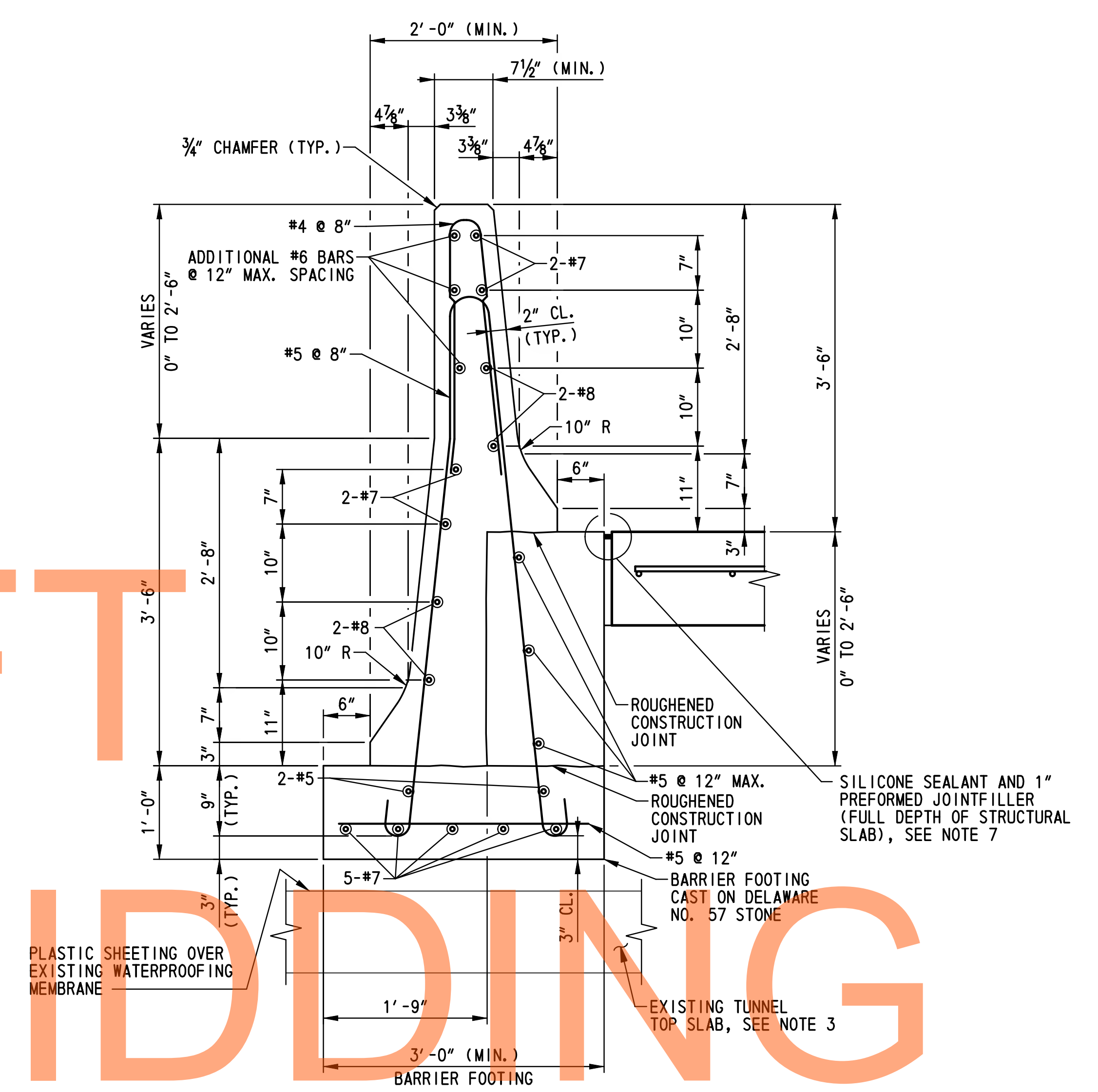
STRUCTURAL SLAB AND SLEEPER SLABS REINFORCEMENT PLANS

AS-04
SHEET NO.
80
TOTAL SHTS.
179

p:\1653-000\conf\acct_1\cadd\bridge\AS04\0301_ID.dgn
 8/17/2012 10:47:46 AM



ELEVATION
SCALE: 1/2"=1'-0"



SECTION A-A
SCALE: 1"=1'-0"

- NOTES:**
- FOR PLAN VIEW OF MODIFIED CONCRETE BARRIER, SEE DWG. NO. AS-01.
 - THE COST OF THE MODIFIED CONCRETE DOUBLE-FACE BIFURCATED BARRIER SHALL BE INCIDENTAL TO THE COST OF THE CONCRETE DOUBLE-FACE BIFURCATED BARRIER. FOR CONCRETE DOUBLE-FACE BIFURCATED PAYMENT DETAILS, SEE DWG. NO. DT-04.
 - EXTREME CAUTION SHALL BE USED TO AVOID DAMAGING THE COMPOSITE WATERPROOFING MEMBRANE OF THE EXISTING PEDESTRIAN TUNNEL. NON-MECHANIZED EXCAVATION WILL BE REQUIRED WITHIN 1' OF THE TOP OF TUNNEL. BARRIER FOOTING AND STRUCTURAL SLAB SHALL NOT BE PLACED DIRECTLY ON TOP OF TUNNEL. IF THE TUNNEL IS EXPOSED DURING EXCAVATION, A 3-PLY ROOFING PAPER BOND BREAKER SHALL BE PLACED BETWEEN THE TOP OF TUNNEL AND THE BOTTOM OF THE BARRIER FOOTING OR STRUCTURAL SLAB. PAYMENT FOR 3-PLY ROOFING PAPER SHALL BE INCIDENTAL TO ITEM 602001 - PORTLAND CEMENT CONCRETE MASONRY, CLASS A.
 - TOLERANCE ON ALL JOINT SEALANT DETAIL DIMENSIONS SHOWN WITHOUT RANGES SHALL BE PLUS 1/16", MINUS 0".
 - ONE (1) LAYER OF PLASTIC SHEETING SHALL BE PLACED ON TOP OF THE EXISTING WATERPROOFING MEMBRANE BEFORE PLACING THE DELAWARE NO. 57 STONE. PAYMENT FOR PLASTIC SHEETING SHALL BE INCIDENTAL TO ITEM 602001 - PORTLAND CEMENT CONCRETE MASONRY, CLASS A.
 - ALL REINFORCING STEEL SHALL BE PROTECTED WITH FUSION-BONDED EPOXY CONFORMING TO AASHTO M 284 (ASTM A 775).
 - SEE DWG. NO. AS-01 FOR PAYMENT INFORMATION FOR SILICONE JOINT SEALANT AND 1" PREFORMED JOINT FILLER BETWEEN STRUCTURAL SLAB AND CONCRETE DOUBLE-FACED BIFURCATED BARRIER.

DRAFT
NOT FOR BIDDING
AUGUST 2015

p:\31653-000\cadd\cadd\1\cadd\bridge\AS05U301_ID.dgn 9/17/2012 10:47:47 AM

ADDENDUMS / REVISIONS	

SCALE: AS NOTED

**US 13 & PORT PENN RD
INTERSECTION**

CONTRACT T201011302	BRIDGE NO.
COUNTY NEW CASTLE	DESIGNED BY: K.M.L.
	CHECKED BY: J.A.G.

**MODIFIED CONCRETE
BARRIER ELEVATION
AND SECTION**

AS-05
SHEET NO. 81
TOTAL SHTS. 179

