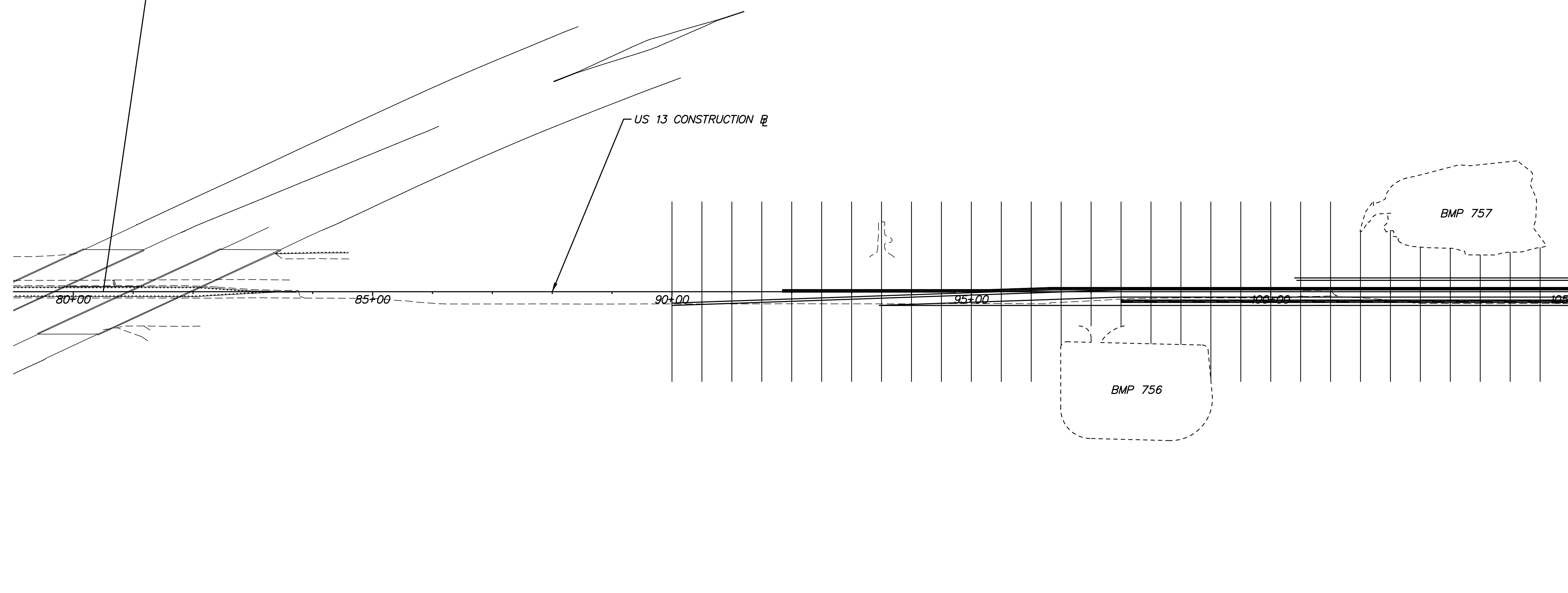


**BEGIN
CONTRACT T201011302
STATION 80 + 50**



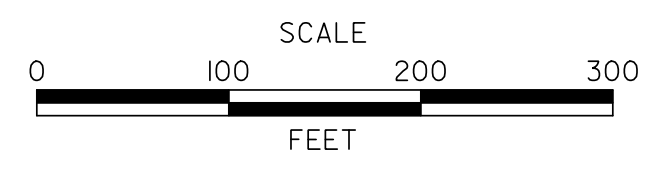
LEGEND	
-----	CROSS SECTION MATCHLINE
-----	BMP SURFACE

NOTE:
ALL CROSS SECTIONS ARE TAKEN RADIAL TO A BASELINE
AND AT 50' INTERVALS UNLESS OTHERWISE NOTED.

M:\2010\11302\CONTRACT T201011302\Methode\KS_ID.dgn 9/17/2015 2:59:56 PM



ADDENDUMS / REVISIONS	



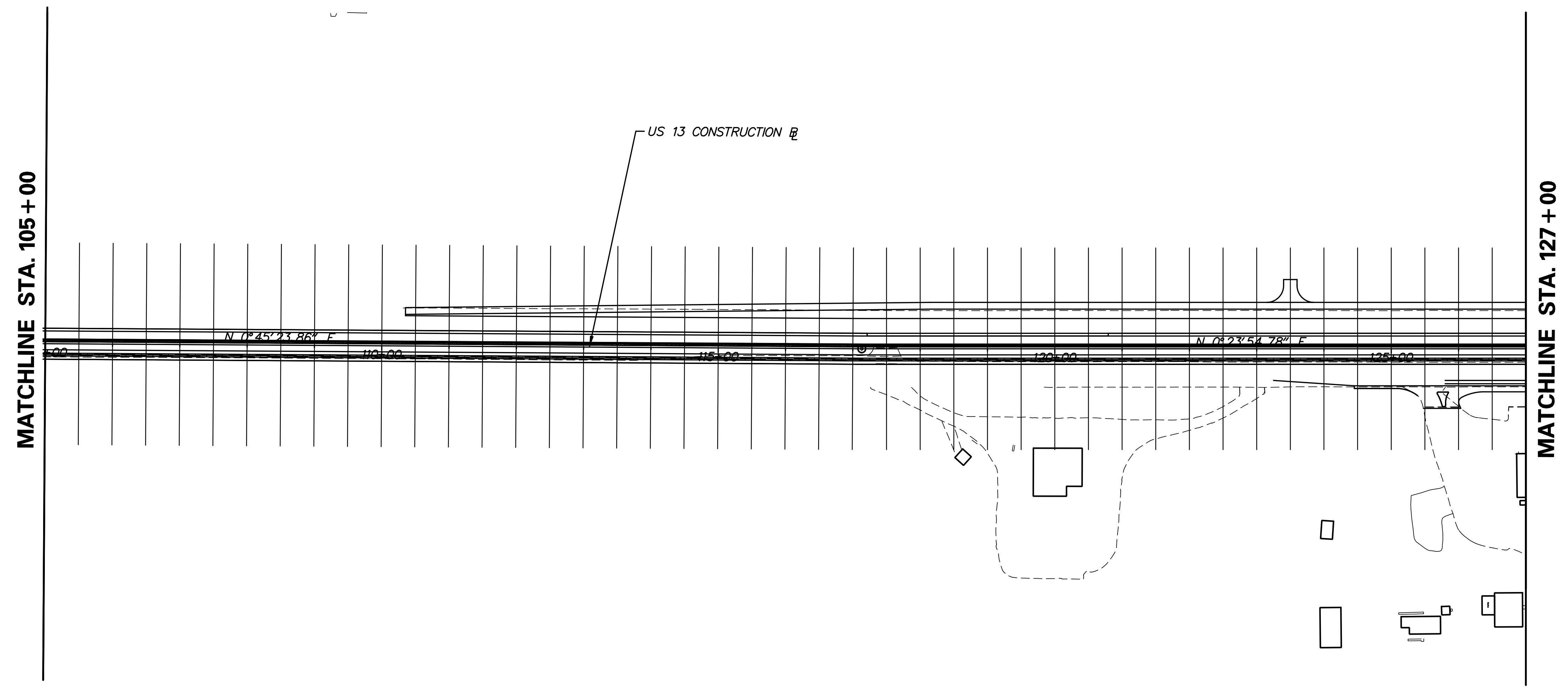
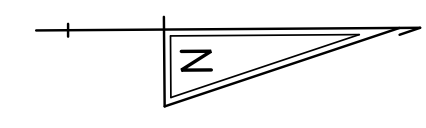
**US 13 & PORT PENN RD
INTERSECTION**

CONTRACT T201011302	BRIDGE NO.
COUNTY NEW CASTLE	DESIGNED BY: SES
	CHECKED BY: BRT

**METHOD OF
CROSS SECTIONS**

XS-01
SHEET NO. 2
TOTAL SHTS. 63

MATCHLINE STA. 105 + 00



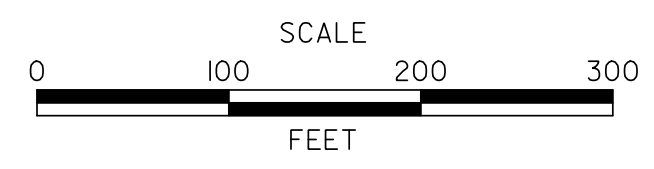
LEGEND	
-----	CROSS SECTION MATCHLINE
-----	BMP SURFACE

NOTE:
ALL CROSS SECTIONS ARE TAKEN RADIAL TO A BASELINE
AND AT 50' INTERVALS UNLESS OTHERWISE NOTED.

M:\176531\000\CONTRACT ID\CADD\XS002U30_Methodo\KS_ID.dgn 9/17/2015 3:24:13 PM



ADDENDUMS / REVISIONS	

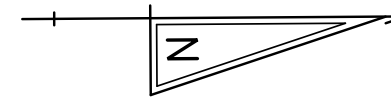


**US 13 & PORT PENN RD
INTERSECTION**

CONTRACT	BRIDGE NO.
T201011302	
COUNTY	DESIGNED BY: SES
NEW CASTLE	CHECKED BY: BRT

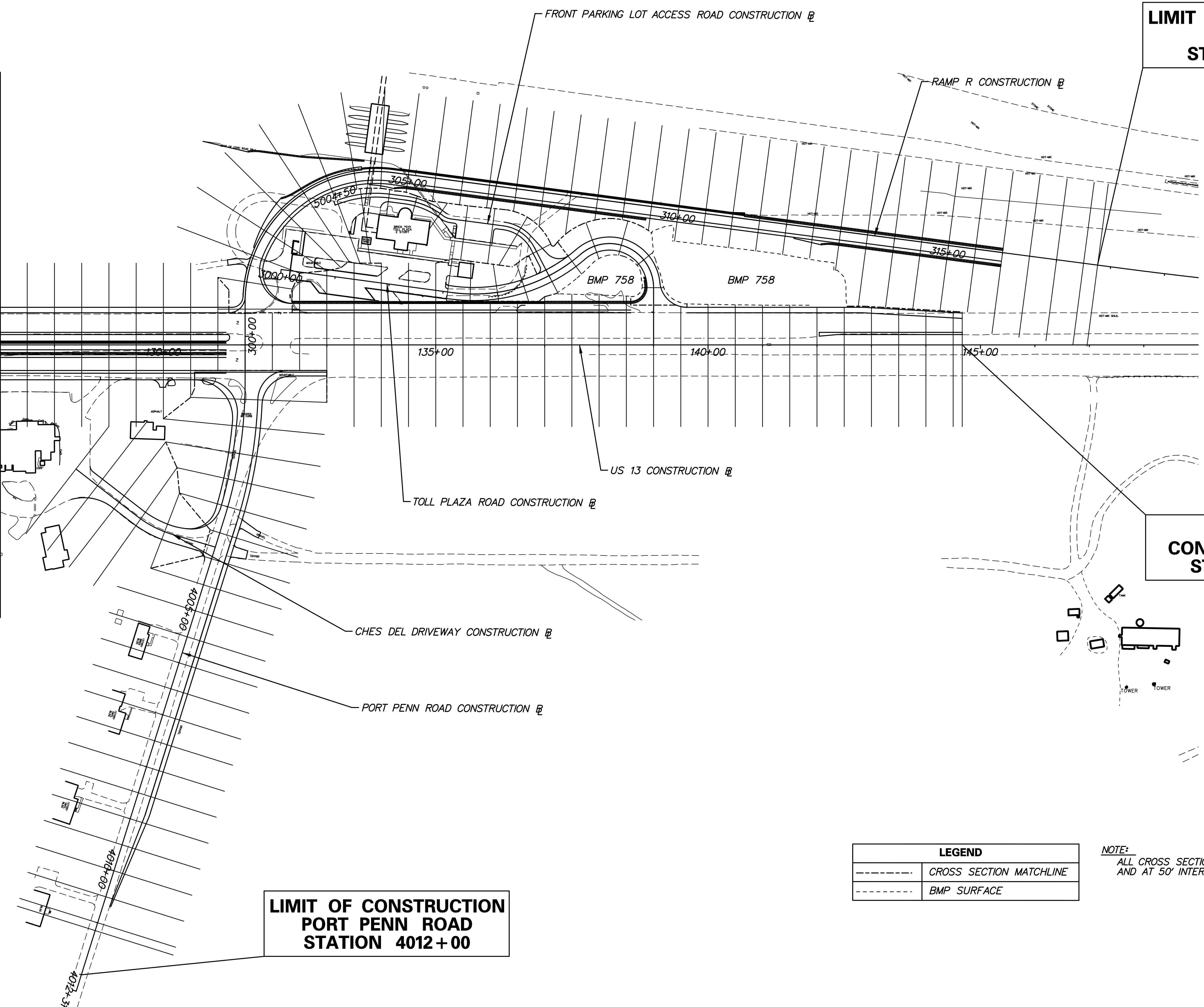
**METHOD OF
CROSS SECTIONS**

XS-02
SHEET NO.
3
TOTAL SHTS.
63



**LIMIT OF CONSTRUCTION
RAMP R
STATION 317+76**

MATCHLINE STA. 127+00



**END
CONTRACT T201011302
STATION 144+67**

**LIMIT OF CONSTRUCTION
PORT PENN ROAD
STATION 4012+00**

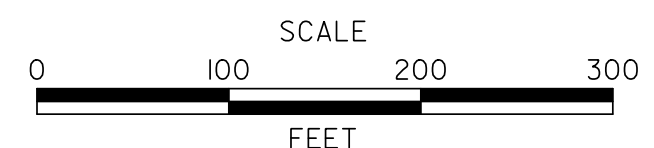
LEGEND	
---	CROSS SECTION MATCHLINE
---	BMP SURFACE

NOTE:
ALL CROSS SECTIONS ARE TAKEN RADIAL TO A BASELINE
AND AT 50' INTERVALS UNLESS OTHERWISE NOTED.

M:\17653\000\CONTRACT T201011302\Method\KS_ID.dgn 6/17/2015 2:44:25 PM



ADDENDUMS / REVISIONS



**US 13 & PORT PENN RD
INTERSECTION**

CONTRACT T201011302	BRIDGE NO.
COUNTY NEW CASTLE	DESIGNED BY: SES
	CHECKED BY: BRT

**METHOD OF
CROSS SECTIONS**

XS-03
SHEET NO. 4
TOTAL SHTS. 63