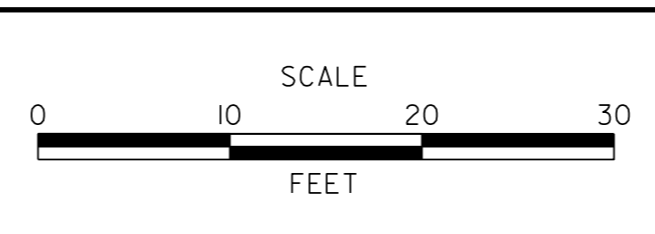


p:\11653-000\gen\res\11653\cadd\XS000\301\Front_Parking_Lot_10.dgn
 9/17/2015 3:58:42 PM



ADDENDUMS / REVISIONS	



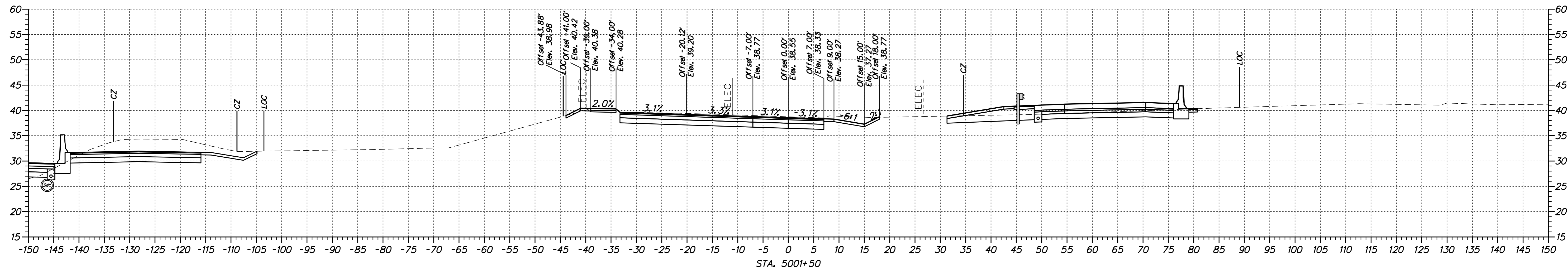
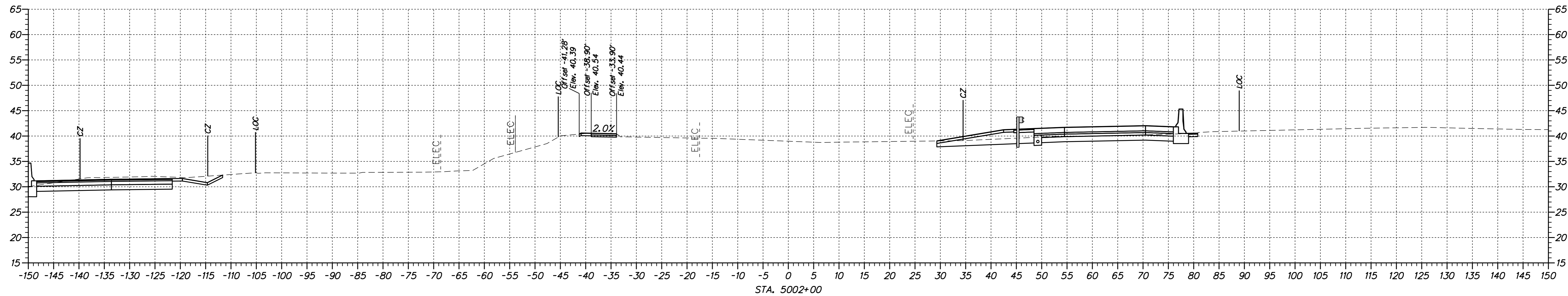
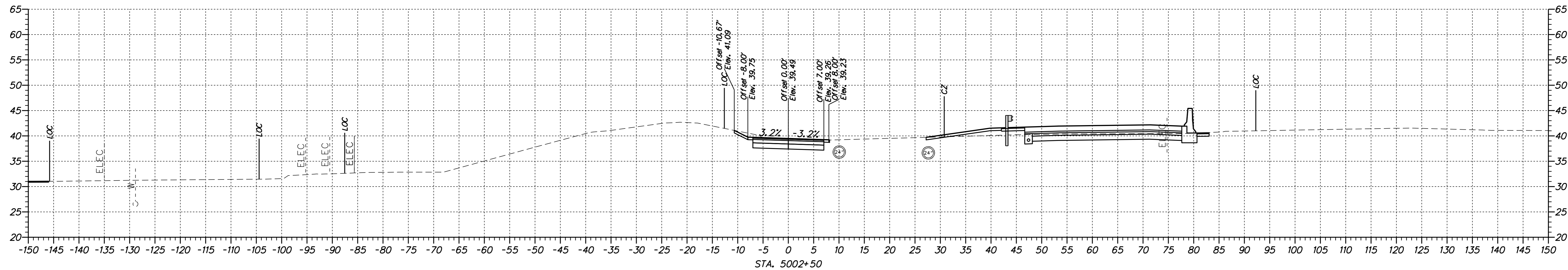
US 13 & PORT PENN RD INTERSECTION

CONTRACT	BRIDGE NO.
T201011302	DESIGNED BY: S.E.S.
COUNTY	CHECKED BY: B.R.T.
NEW CASTLE	

CROSS SECTIONS	
FRONT PARKING LOT ACCESS ROAD	

XS-22
SHEET NO.
23
TOTAL SHTS.
63

p:\1653-000\external\1653\cadd\XS001\301\Front_Parking_Lot_ID.dgn
 9/17/2015 3:58:42 PM



ADDENDUMS / REVISIONS



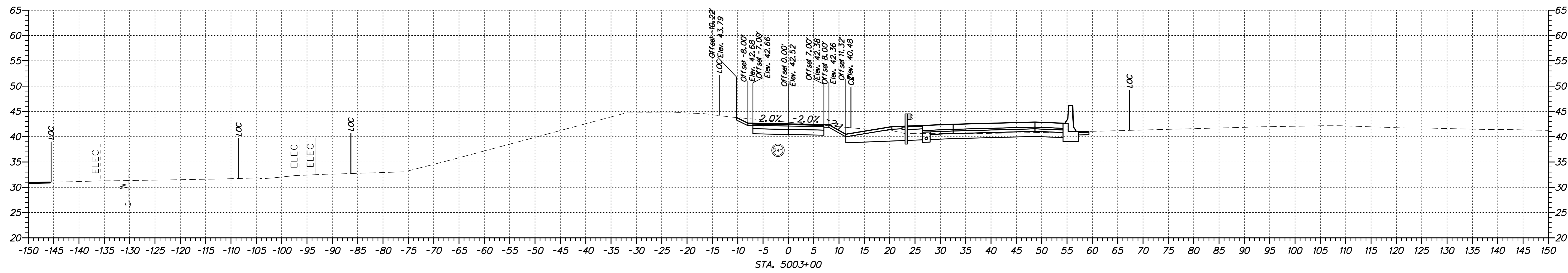
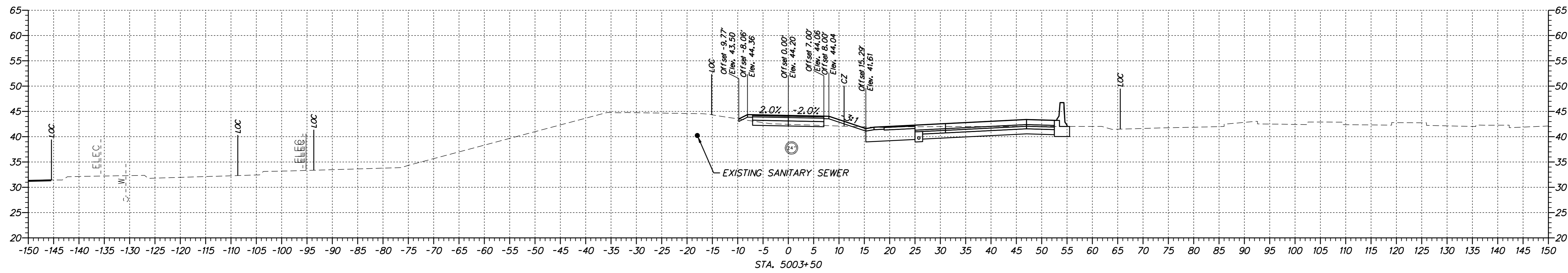
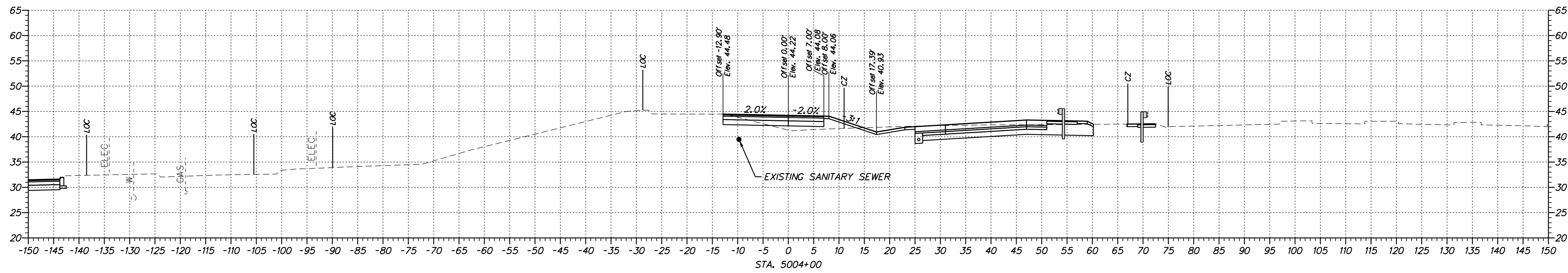
**US 13 & PORT PENN RD
INTERSECTION**

CONTRACT	BRIDGE NO.
T201011302	DESIGNED BY: S.E.S.
COUNTY	CHECKED BY: B.R.T.
NEW CASTLE	

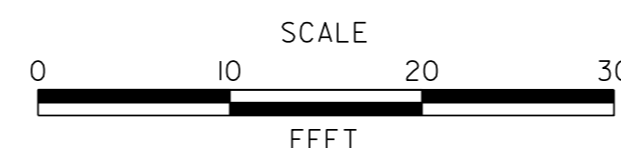
CROSS SECTIONS
FRONT PARKING LOT ACCESS ROAD

XS-23
SHEET NO.
24
TOTAL SHTS.
63

n:\1653-000\seattle\1653\cadd\XS000301\Front_Parking_Lot_ID.dgn
 9/17/2015 3:58:42 PM



ADDENDUMS / REVISIONS



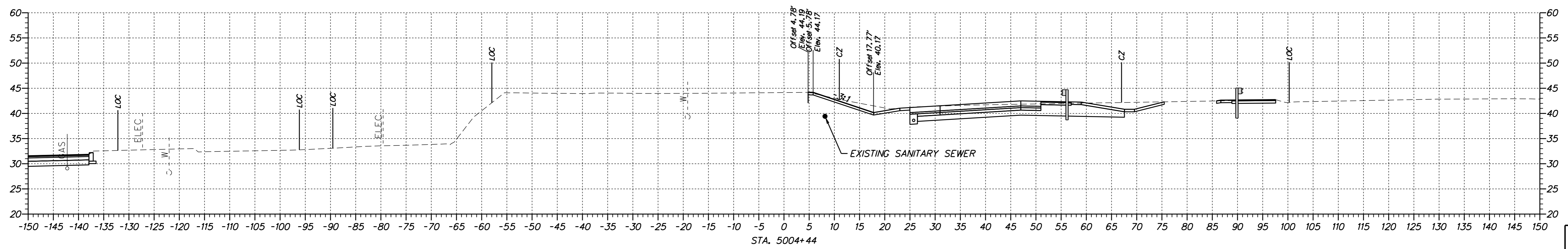
US 13 & PORT PENN RD INTERSECTION

CONTRACT	BRIDGE NO.
T201011302	DESIGNED BY: S.E.S.
COUNTY	CHECKED BY: B.R.T.
NEW CASTLE	

CROSS SECTIONS
FRONT PARKING LOT ACCESS ROAD

XS-24
SHEET NO.
25
TOTAL SHTS.
63

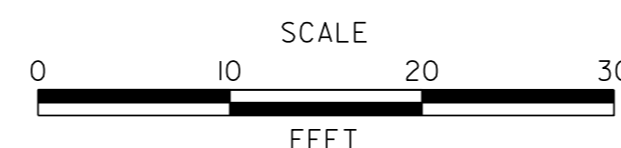
p:\1653-000\gen\ref\1d\cead\XS00U30L\Front_Parking_Lot_1D.dgn
 9/17/2015 3:58:42 PM



STA. 5004+44



ADDENDUMS / REVISIONS



US 13 & PORT PENN RD INTERSECTION

CONTRACT	BRIDGE NO.
T201011302	DESIGNED BY: S.E.S.
COUNTY	CHECKED BY: B.R.T.
NEW CASTLE	

CROSS SECTIONS
FRONT PARKING LOT ACCESS ROAD

XS-25
SHEET NO.
26
TOTAL SHTS.
63