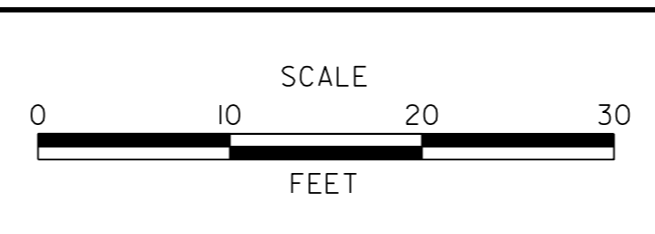


p:\1653-000\gen\ref\1\cedd\XS00U301_Port_Penn_ID.dgn
 9/17/2015 3:58:42 PM



ADDENDUMS / REVISIONS	

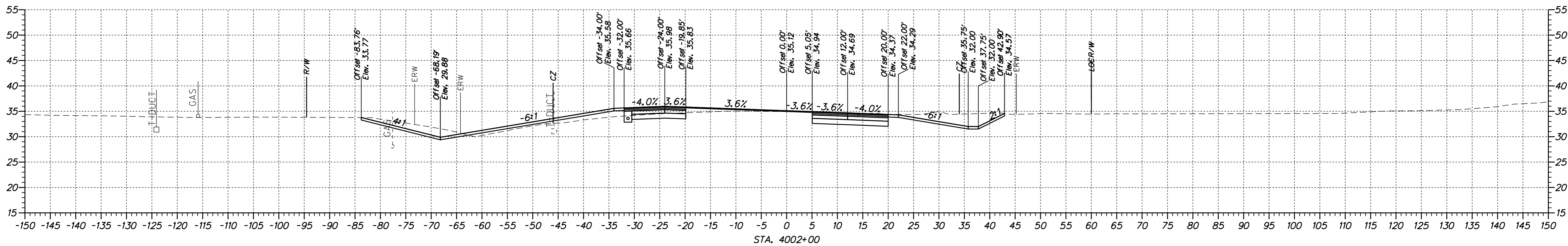
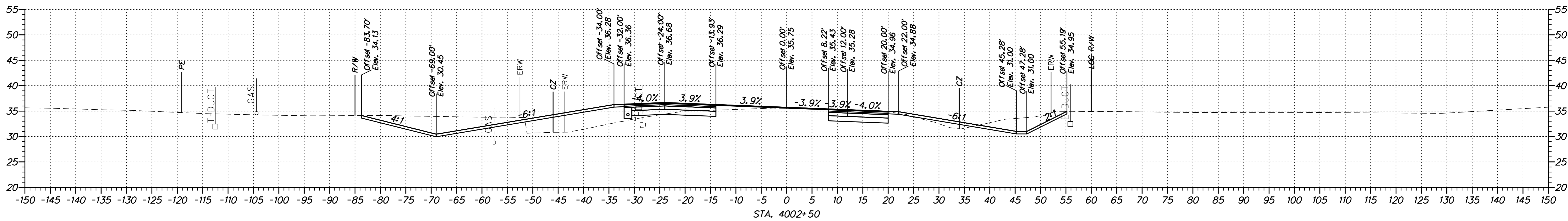
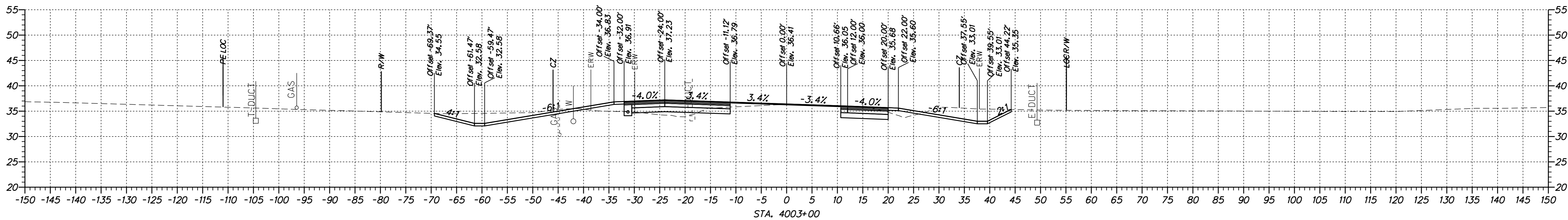
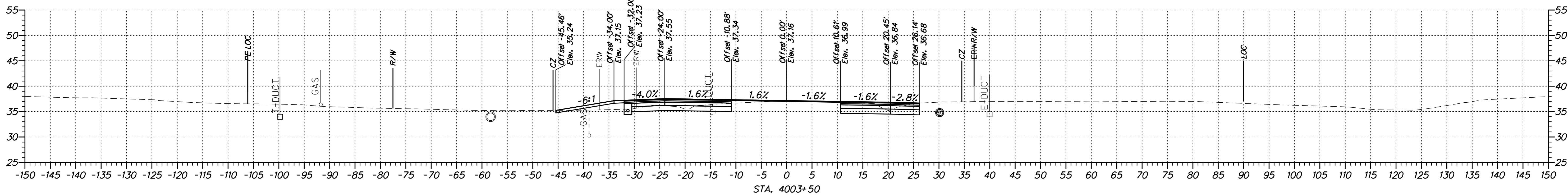


US 13 & PORT PENN RD INTERSECTION

CONTRACT T201011302	BRIDGE NO.
COUNTY NEW CASTLE	DESIGNED BY: S.E.S. CHECKED BY: B.R.T.

CROSS SECTIONS PORT PENN ROAD	
SHEET NO. 27	TOTAL SHTS. 63

XS-26



p:\1653-000\scen\res\1\cadd\X500U301_PorL_Pem_ID.dgn
 9/17/2015 3:58:42 PM



ADDENDUMS / REVISIONS



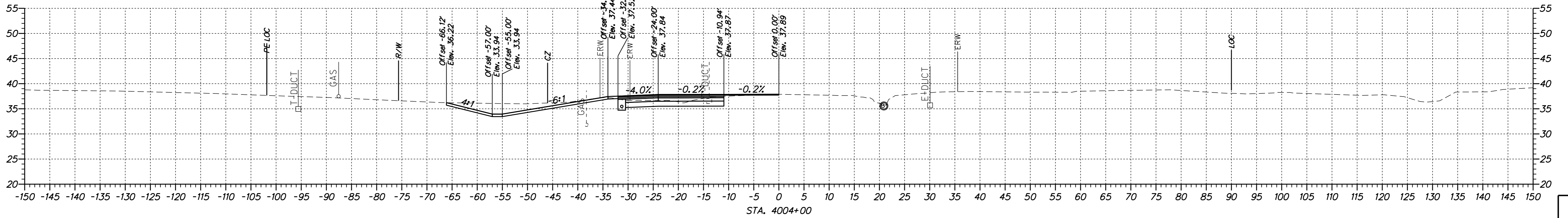
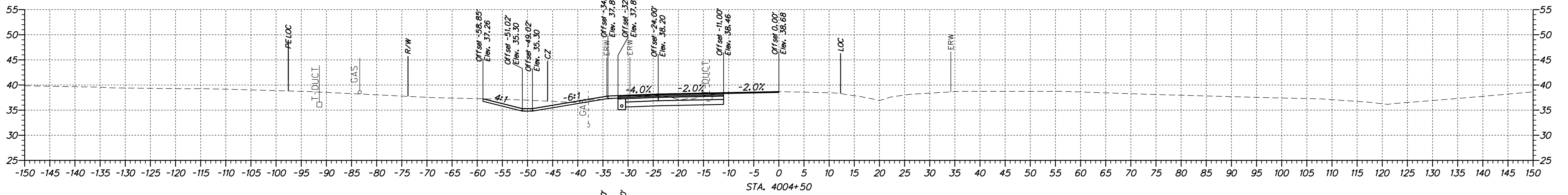
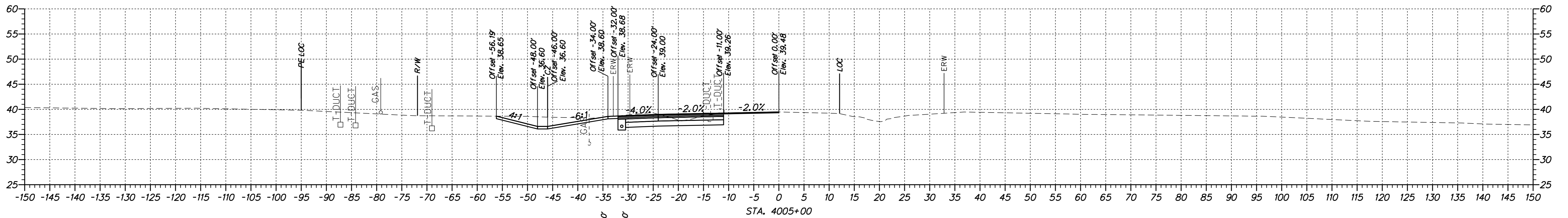
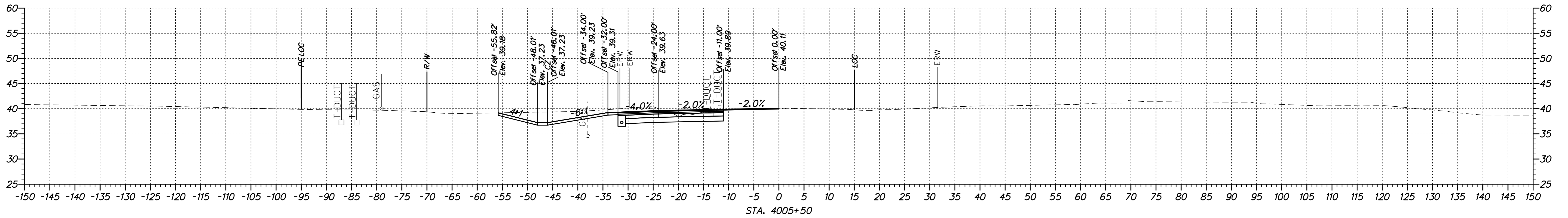
US 13 & PORT PENN RD INTERSECTION

CONTRACT T201011302	BRIDGE NO.
COUNTY NEW CASTLE	DESIGNED BY: S.E.S.
	CHECKED BY: B.R.T.

CROSS SECTIONS
PORT PENN ROAD

X5-27
SHEET NO. 28
TOTAL SHTS. 63

p:\1653-000\gen\ref\1653\cadd\XS00U301_PorL_Pem_1D.dgn
 9/17/2015 3:58:42 PM



ADDENDUMS / REVISIONS

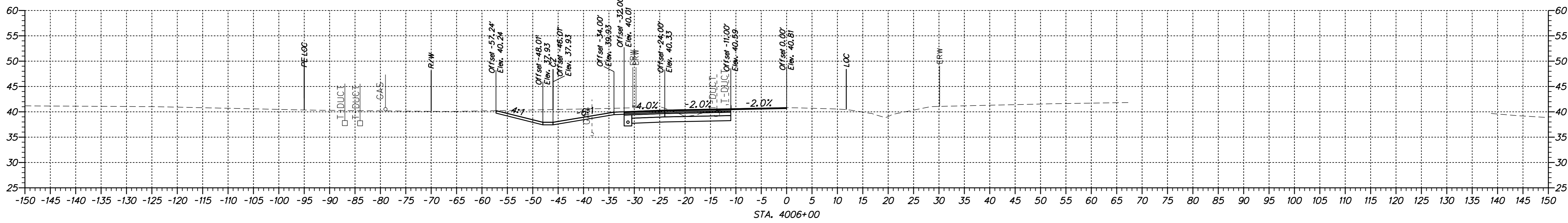
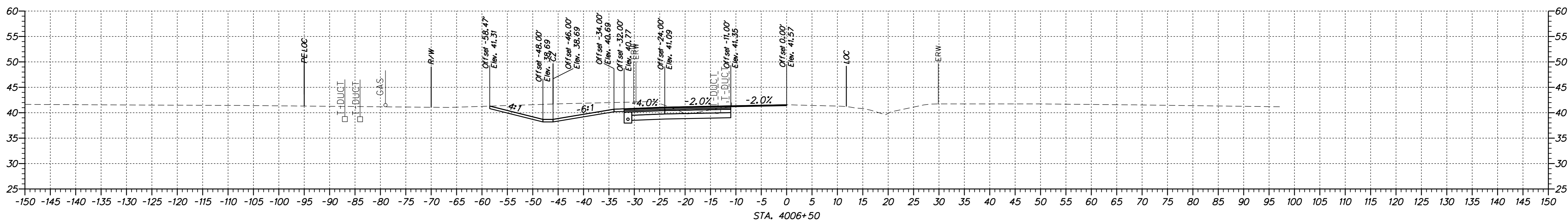
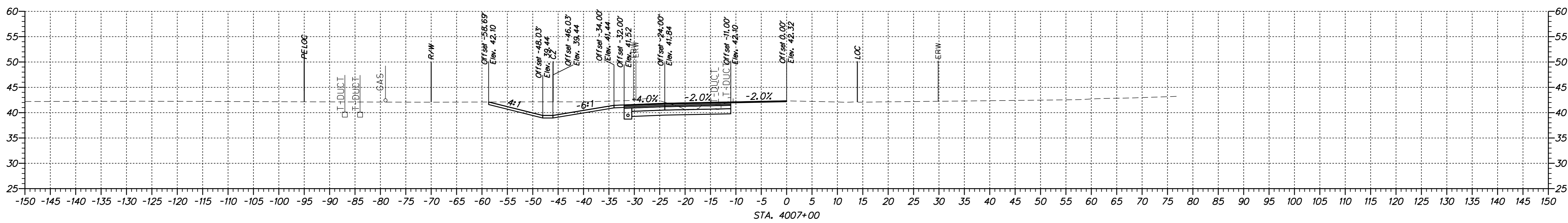
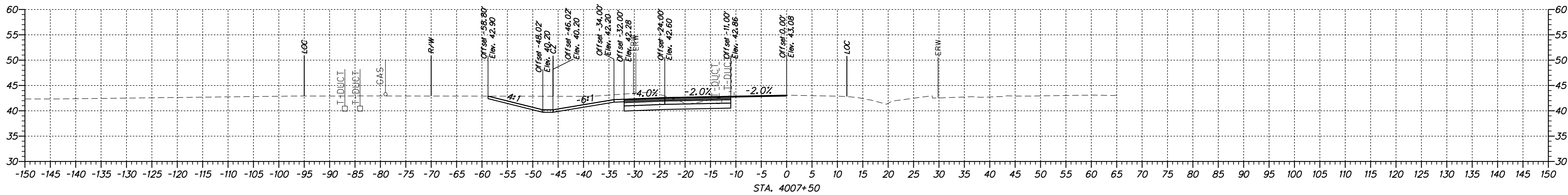


**US 13 & PORT PENN RD
INTERSECTION**

CONTRACT T201011302	BRIDGE NO.
COUNTY NEW CASTLE	DESIGNED BY: S.E.S. CHECKED BY: B.R.T.

**CROSS SECTIONS
PORT PENN ROAD**

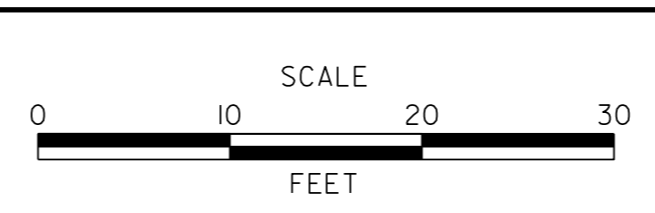
XS-28
SHEET NO. 29
TOTAL SHTS. 63



p:\1653-000\gen\res\1653\cead\XS00U301_PorL_Pem_10.dgn
 9/17/2015 3:58:53 PM



ADDENDUMS / REVISIONS	

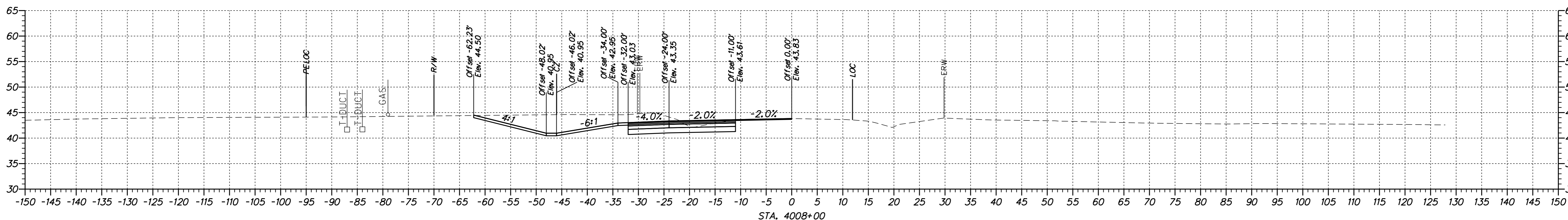
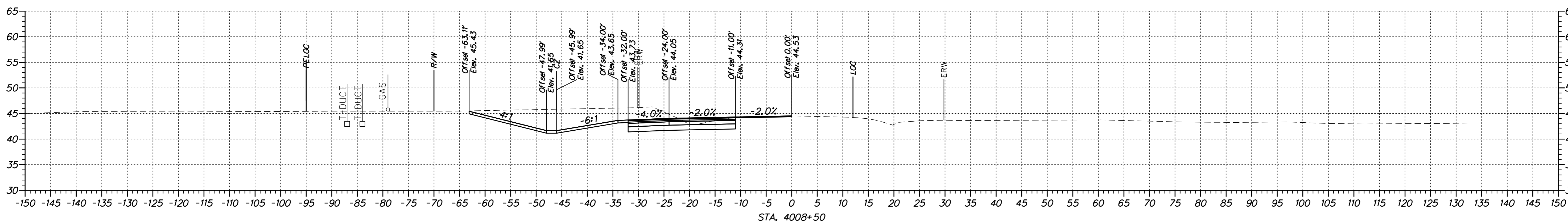
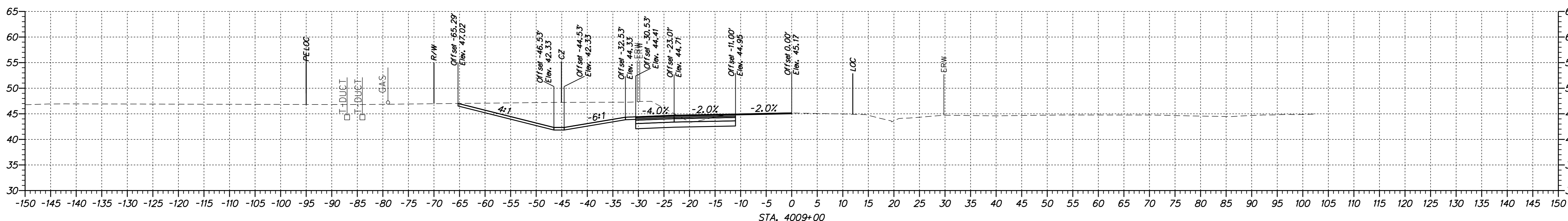
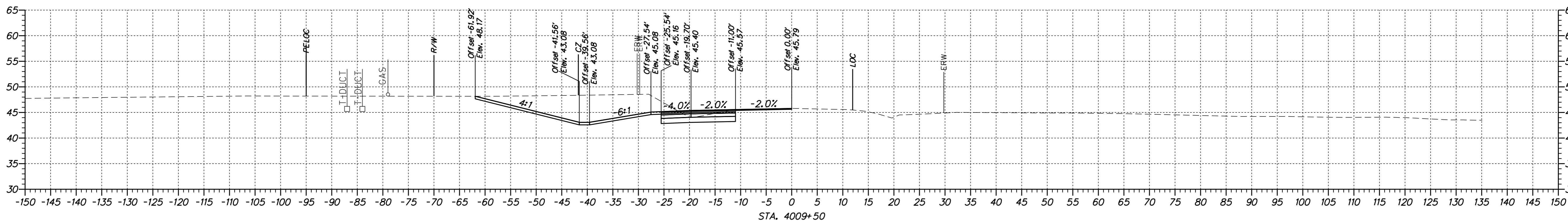


**US 13 & PORT PENN RD
INTERSECTION**

CONTRACT T201011302	BRIDGE NO.
COUNTY NEW CASTLE	DESIGNED BY: S.E.S. CHECKED BY: B.R.T.

CROSS SECTIONS PORT PENN ROAD

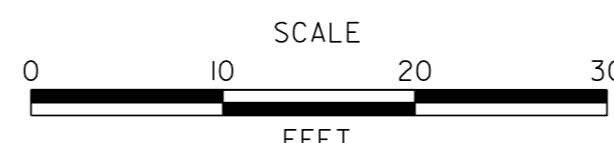
XS-29
SHEET NO. 30
TOTAL SHTS. 63



p:\1653-000\gen\res\1\cadd\XS00U301_PorL_Pem_ID.dgn
 9/17/2015 3:58:53 PM



ADDENDUMS / REVISIONS

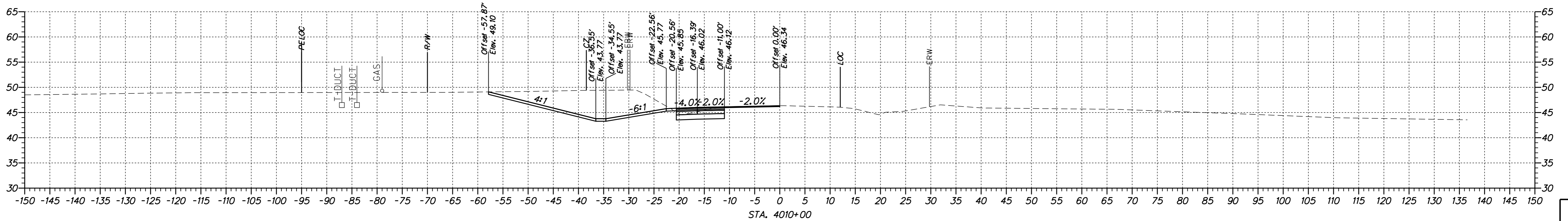
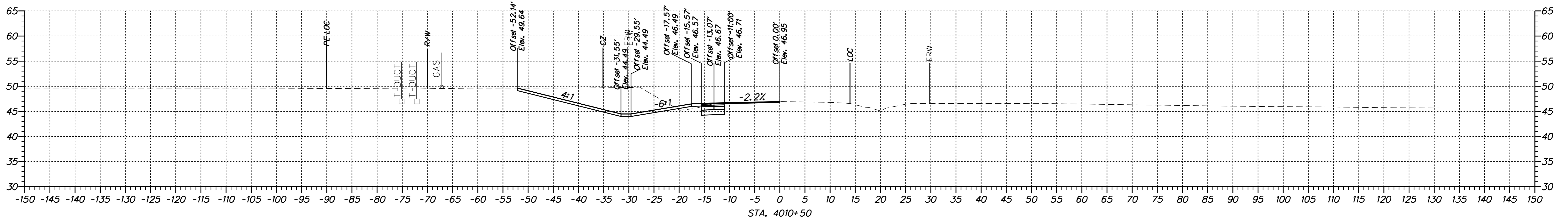
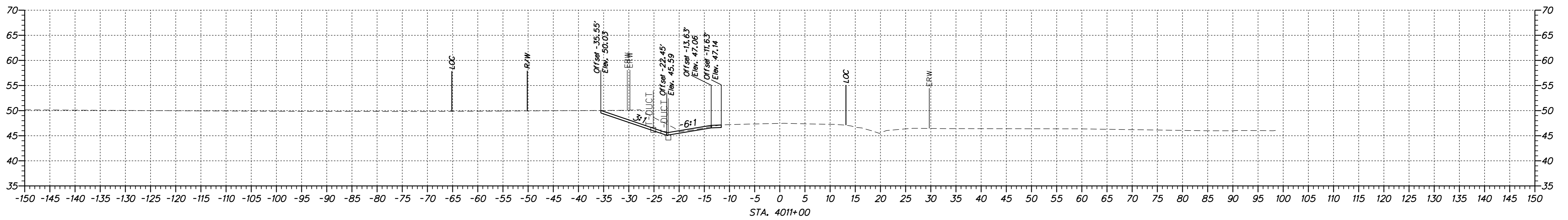
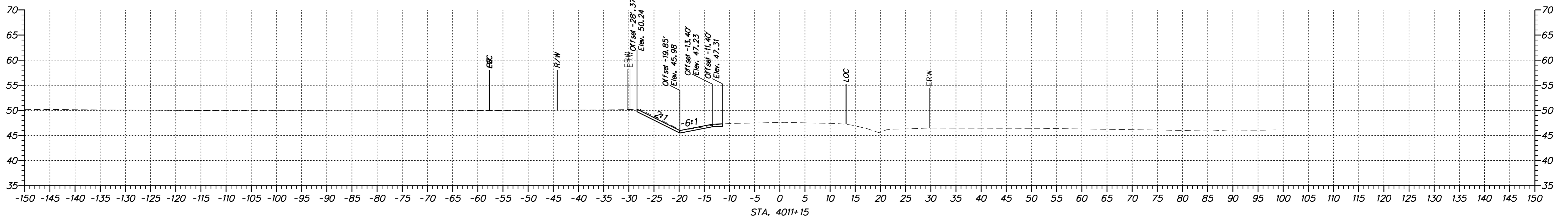


US 13 & PORT PENN RD INTERSECTION

CONTRACT	BRIDGE NO.
T201011302	DESIGNED BY: S.E.S.
COUNTY	CHECKED BY: B.R.T.
NEW CASTLE	

CROSS SECTIONS
PORT PENN ROAD

XS-30
SHEET NO.
31
TOTAL SHTS.
63



p:\1653-000\gen\res\1653\cadd\XS00U301_Port_Penn_ID.dgn
 5/17/2015 3:58:43 PM



ADDENDUMS / REVISIONS



**US 13 & PORT PENN RD
INTERSECTION**

CONTRACT	BRIDGE NO.
T201011302	
COUNTY	DESIGNED BY: S.E.S.
NEW CASTLE	CHECKED BY: B.R.T.

**CROSS SECTIONS
PORT PENN ROAD**

XS-31
SHEET NO.
32
TOTAL SHTS.
63