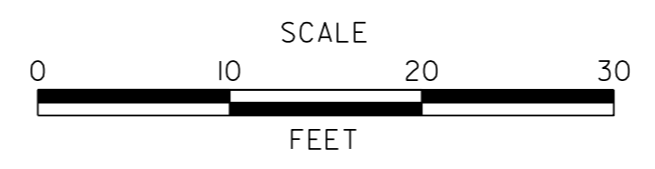


p:\1653-000\gen\res\1\cadd\XS00U301_RompR_ID.dgn
 9/17/2015 3:58:44 PM



ADDENDUMS / REVISIONS	

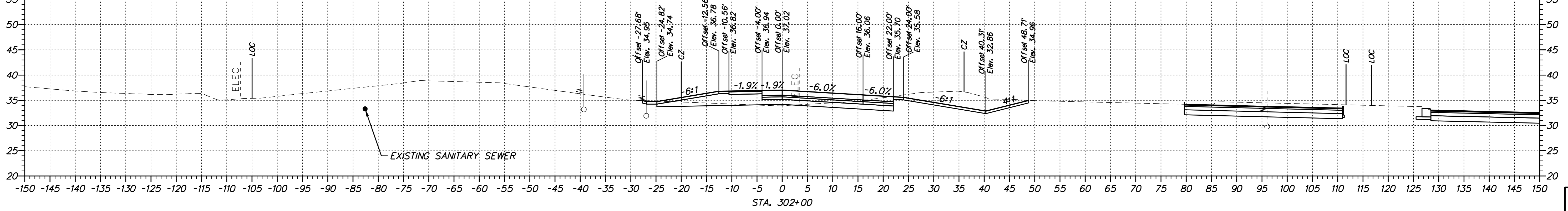
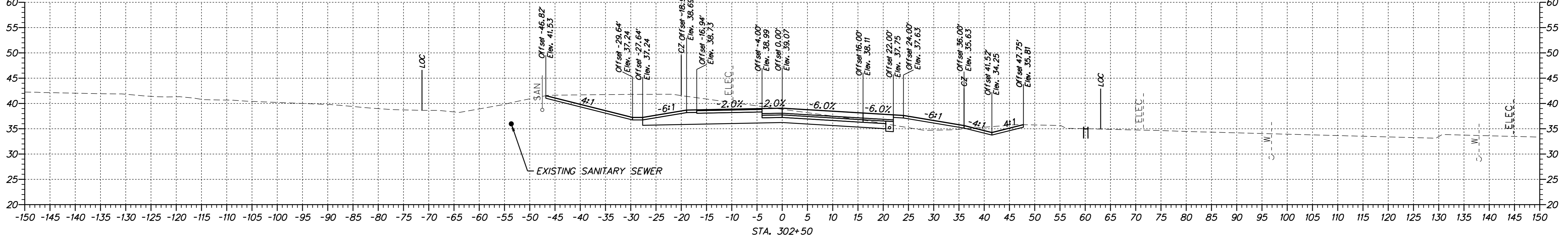
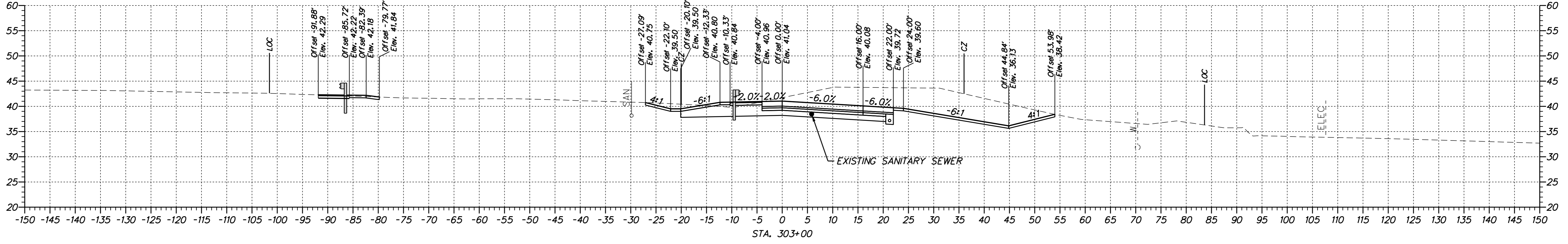
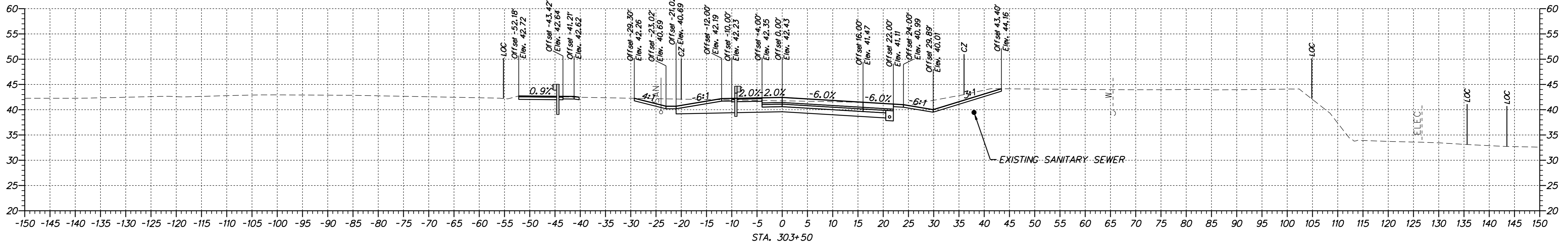


US 13 & PORT PENN RD INTERSECTION

CONTRACT T201011302	BRIDGE NO.
COUNTY NEW CASTLE	DESIGNED BY: S.E.S.
	CHECKED BY: B.R.T.

**CROSS SECTIONS
RAMP R**

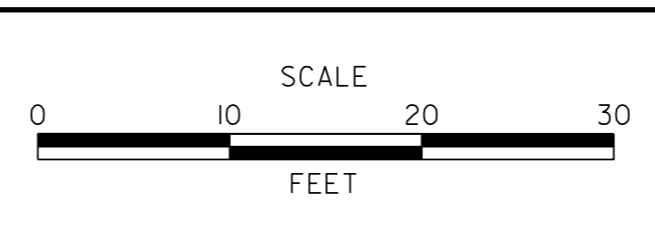
XS-04
SHEET NO. 5
TOTAL SHTS. 63



p:\1653-000\gen\res\1\cadd\XS00U301_RompR_ID.dgn
 9/17/2015 3:58:44 PM



ADDENDUMS / REVISIONS

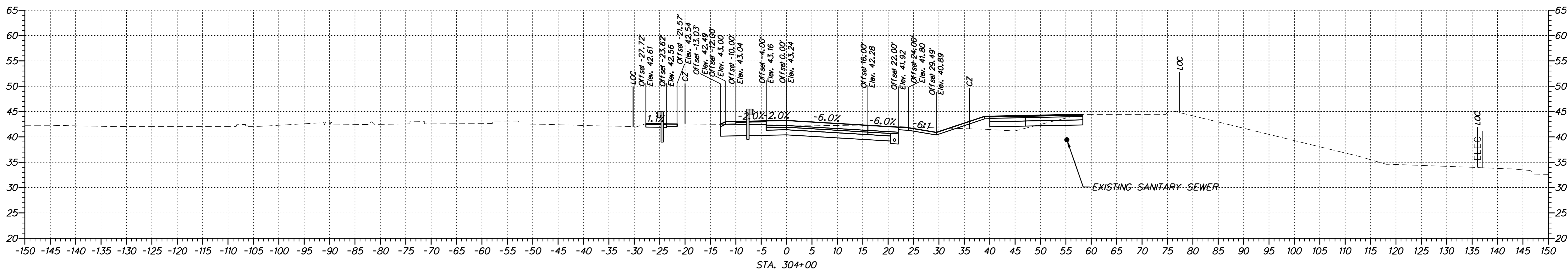
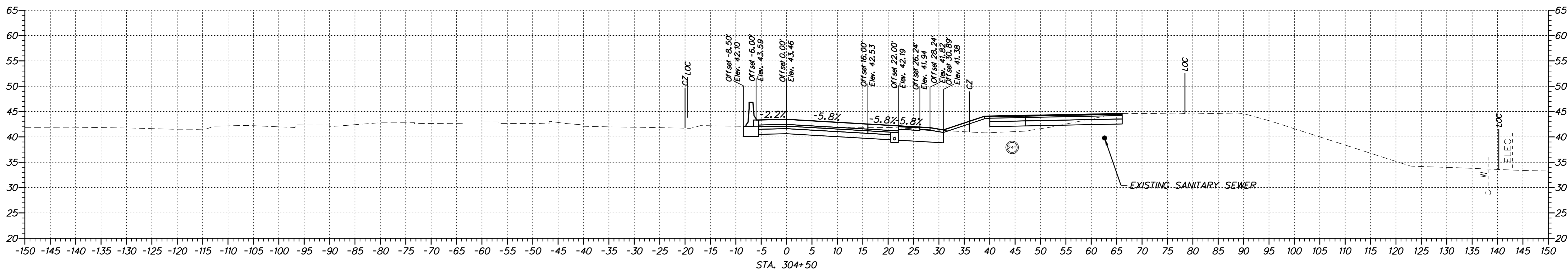
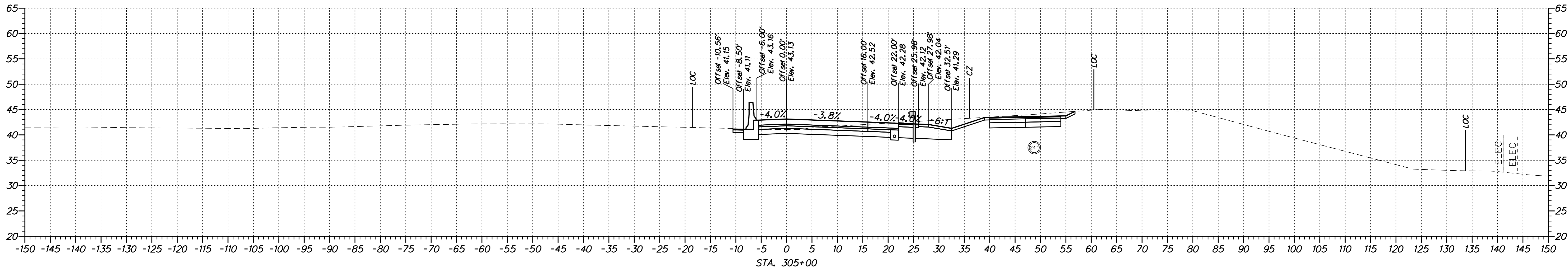


US 13 & PORT PENN RD
INTERSECTION

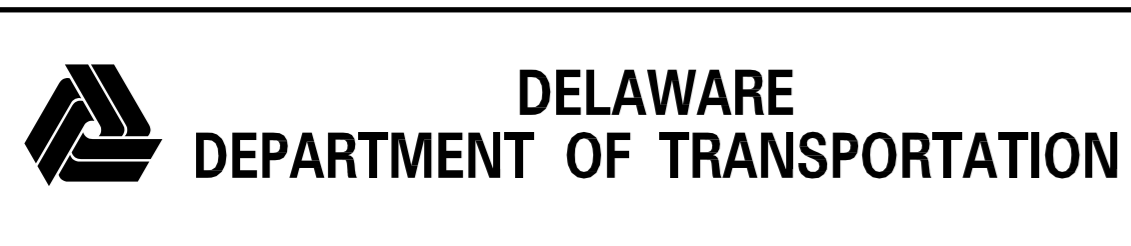
CONTRACT T201011302	BRIDGE NO.
COUNTY NEW CASTLE	DESIGNED BY: S.E.S.
	CHECKED BY: B.R.T.

CROSS SECTIONS
RAMP R

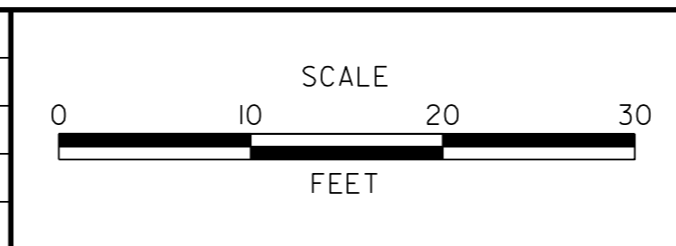
XS-05
SHEET NO. 6
TOTAL SHTS. 63



p:\1653-000\seattle\1653\cadd\XS00U301_RompR_ID.dgn
 9/17/2015 3:58:44 PM



ADDENDUMS / REVISIONS	

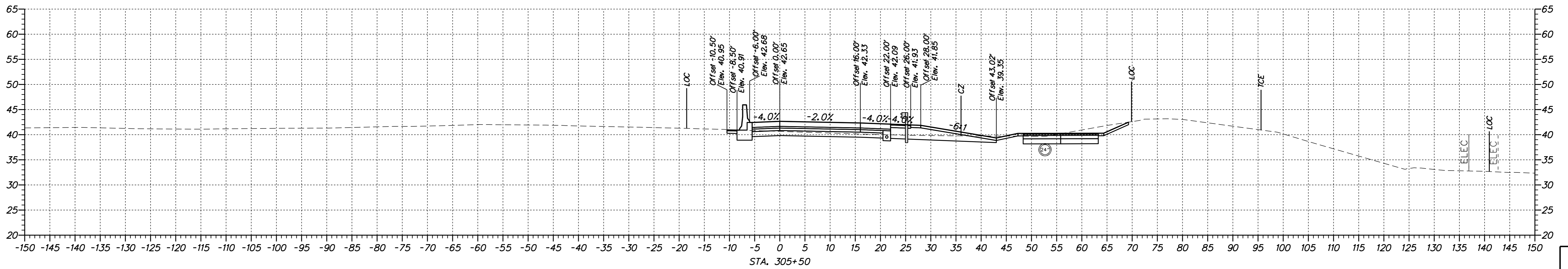
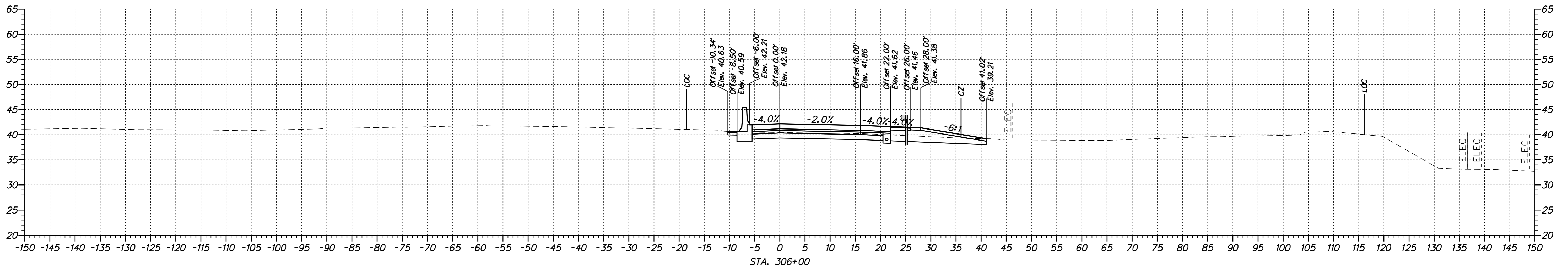
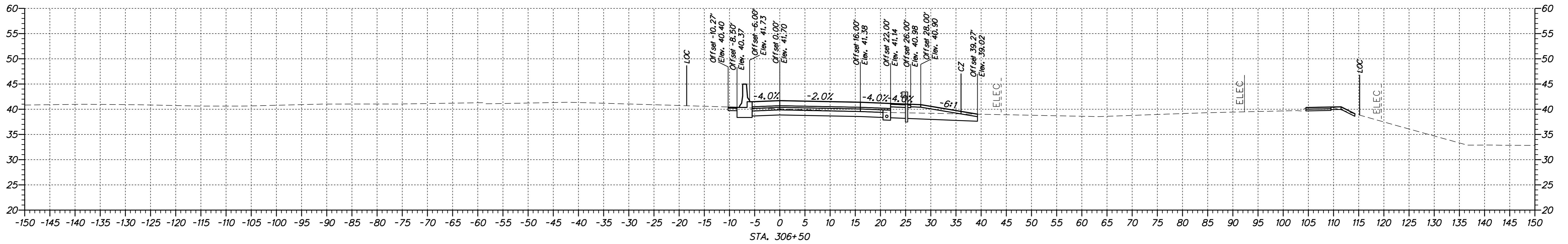


**US 13 & PORT PENN RD
INTERSECTION**

CONTRACT T201011302	BRIDGE NO.
COUNTY NEW CASTLE	DESIGNED BY: S.E.S. CHECKED BY: B.R.T.

CROSS SECTIONS RAMP R	SHEET NO. 7
	TOTAL SHTS. 63

XS-06



p:\1653-000\centres\1\cadd\XS00U301_RompR_ID.dgn
 9/17/2015 3:58:44 PM



ADDENDUMS / REVISIONS



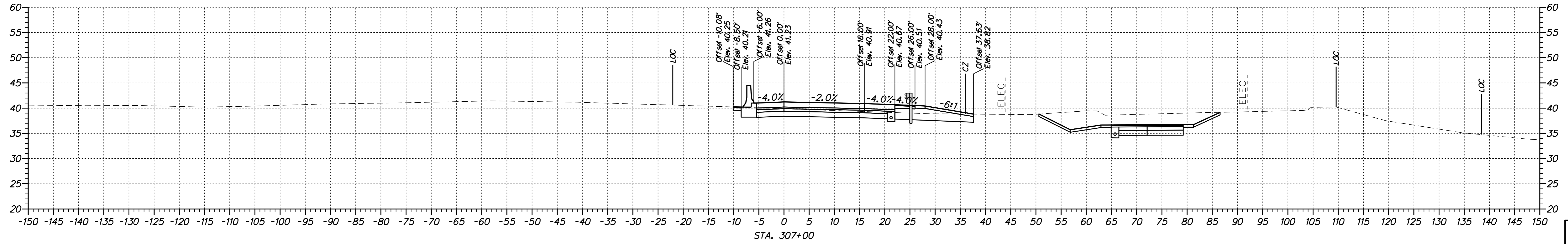
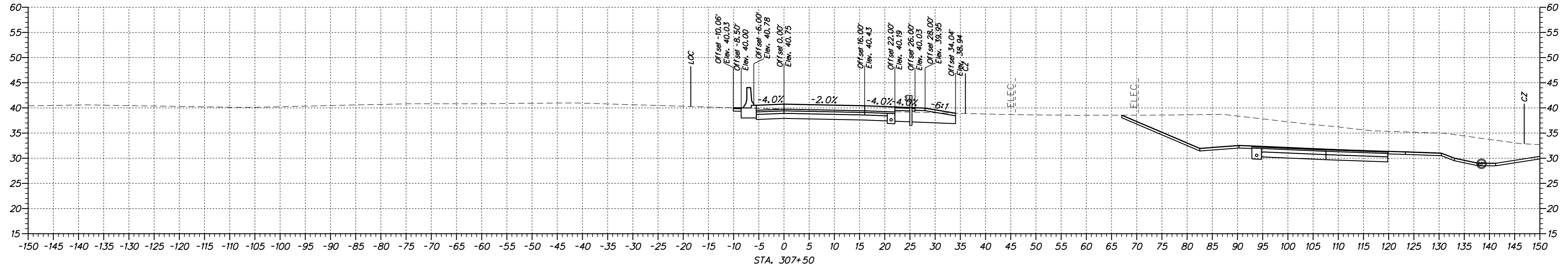
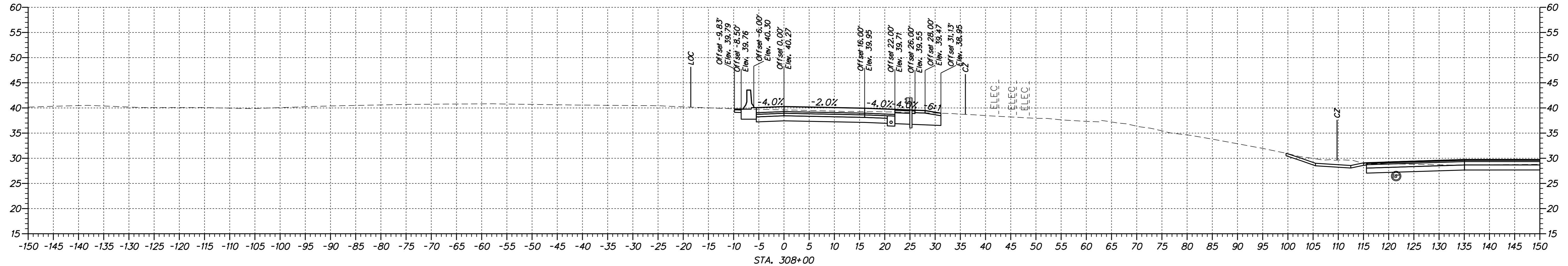
US 13 & PORT PENN RD INTERSECTION

CONTRACT	BRIDGE NO.
T201011302	DESIGNED BY: S.E.S.
COUNTY	CHECKED BY: B.R.T.
NEW CASTLE	

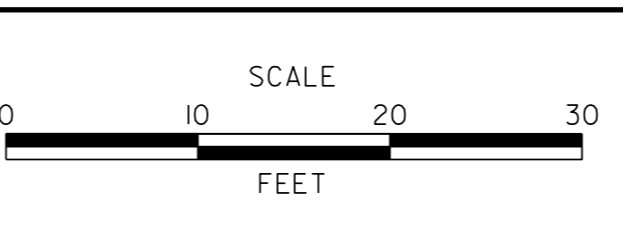
CROSS SECTIONS
RAMP R

XS-07
SHEET NO.
8
TOTAL SHTS.
63

p:\1653-000\gen\res\1\1\cadd\XS00U301_RompR_ID.dgn
 9/17/2015 3:58:44 PM



ADDENDUMS / REVISIONS	

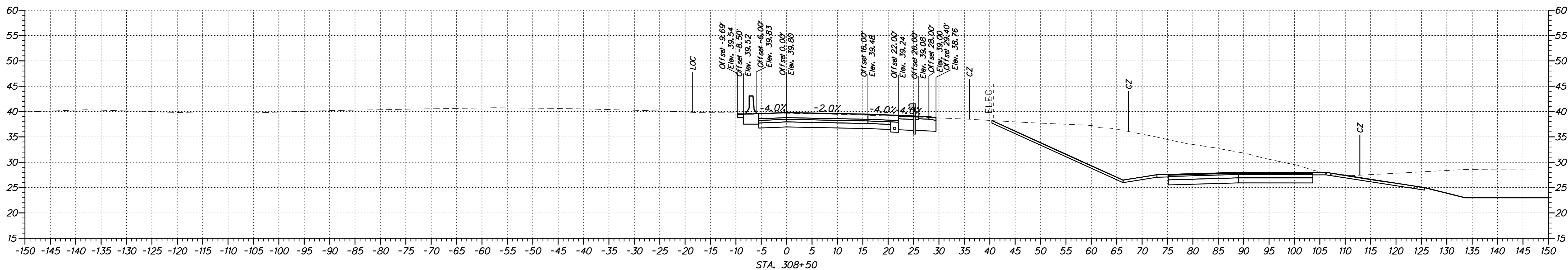
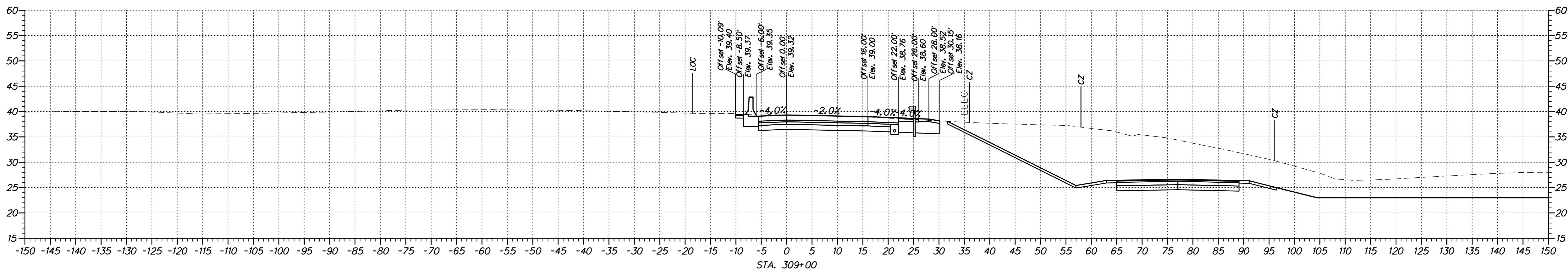
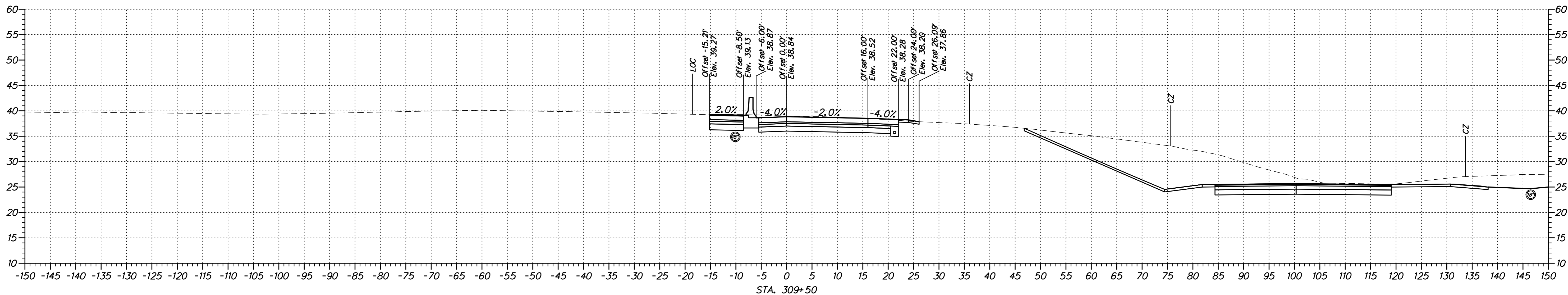


US 13 & PORT PENN RD INTERSECTION

CONTRACT T201011302	BRIDGE NO.
COUNTY NEW CASTLE	DESIGNED BY: S.E.S.
	CHECKED BY: B.R.T.

CROSS SECTIONS RAMP R

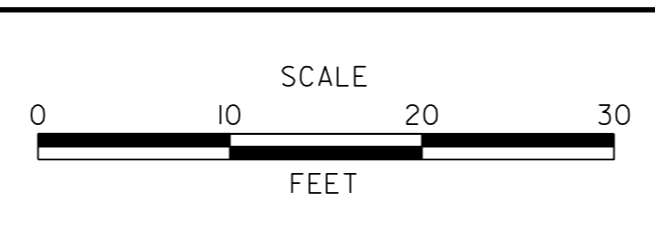
XS-08
SHEET NO. 9
TOTAL SHTS. 63



p:\1653-000\genl\csl\l\cadd\XS00U301_RompR_ID.dgn
 9/17/2015 3:58:45 PM



ADDENDUMS / REVISIONS	

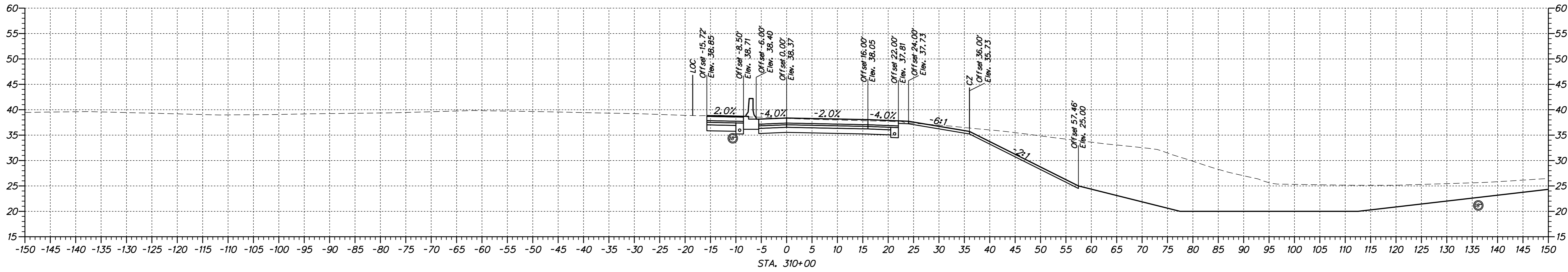
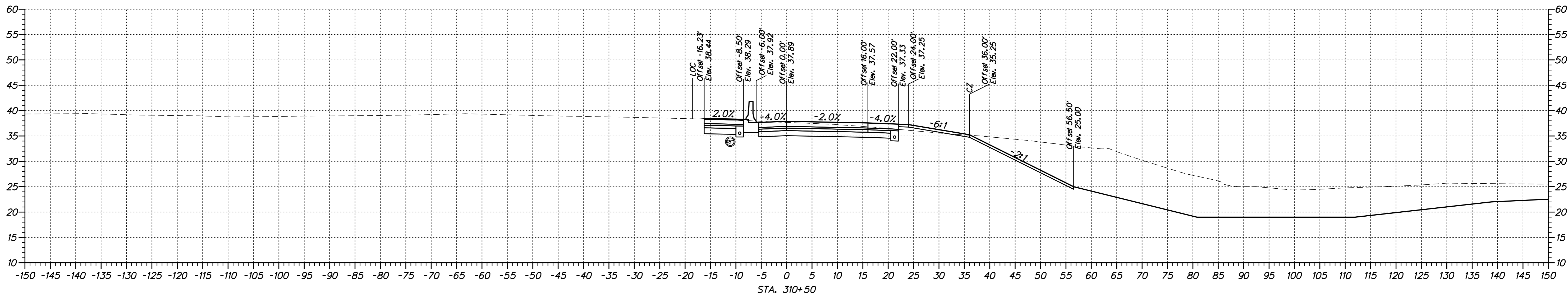
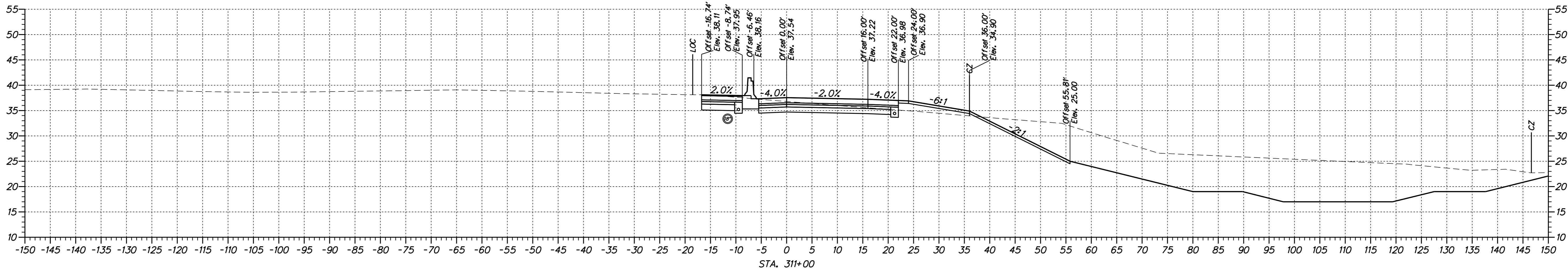


US 13 & PORT PENN RD INTERSECTION

CONTRACT T201011302	BRIDGE NO.
COUNTY NEW CASTLE	DESIGNED BY: S.E.S.
	CHECKED BY: B.R.T.

CROSS SECTIONS RAMP R	SHEET NO. 10
	TOTAL SHTS. 63

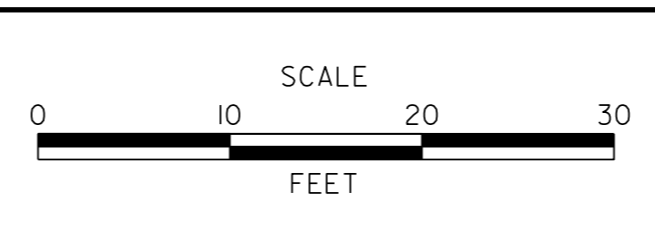
XS-09
 SHEET NO. 10
 TOTAL SHTS. 63



p:\1653-000\gen\ref\1\cadd\XS00U301_RompR_ID.dgn
 9/17/2015 3:58:45 PM



ADDENDUMS / REVISIONS	

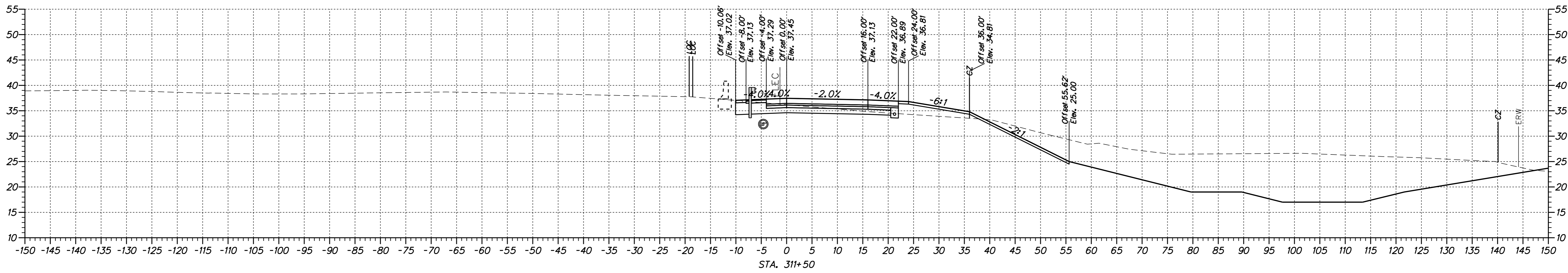
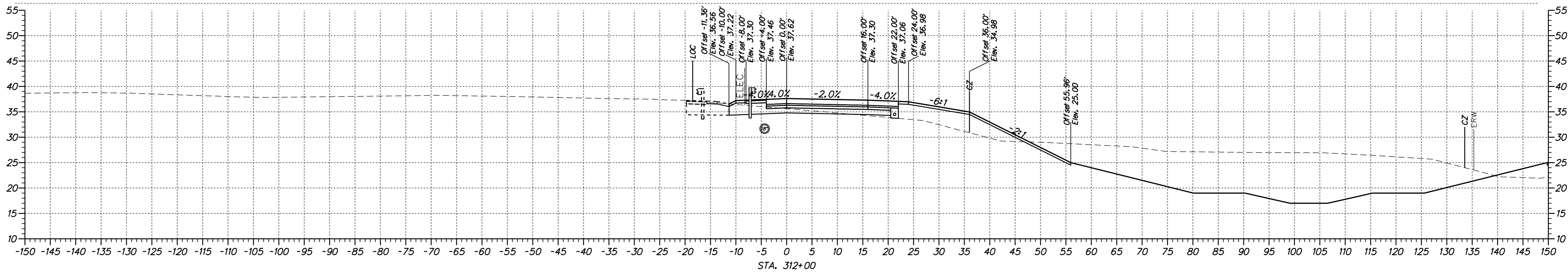
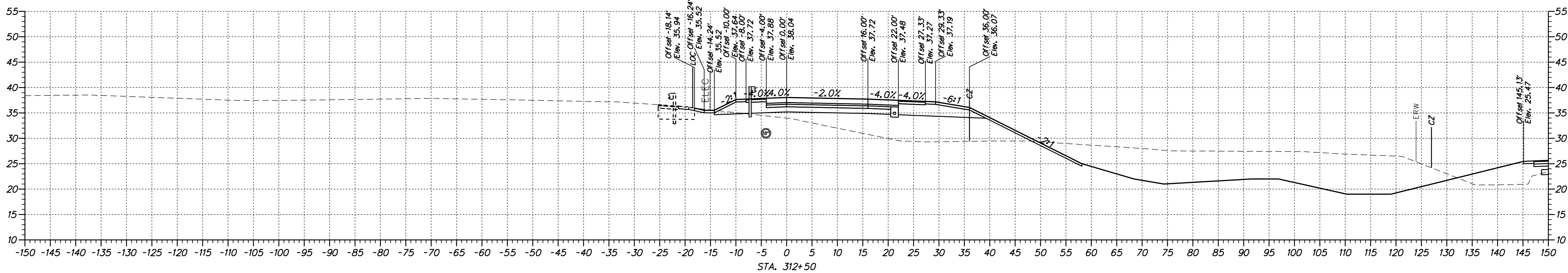


US 13 & PORT PENN RD INTERSECTION

CONTRACT T201011302	BRIDGE NO.
COUNTY NEW CASTLE	DESIGNED BY: S.E.S. CHECKED BY: B.R.T.

CROSS SECTIONS
RAMP R

XS-10
SHEET NO. 11
TOTAL SHTS. 63



p:\11653-000\genl\delaware\XS00U301_RompR_ID.dgn
 9/17/2015 3:58:45 PM



ADDENDUMS / REVISIONS

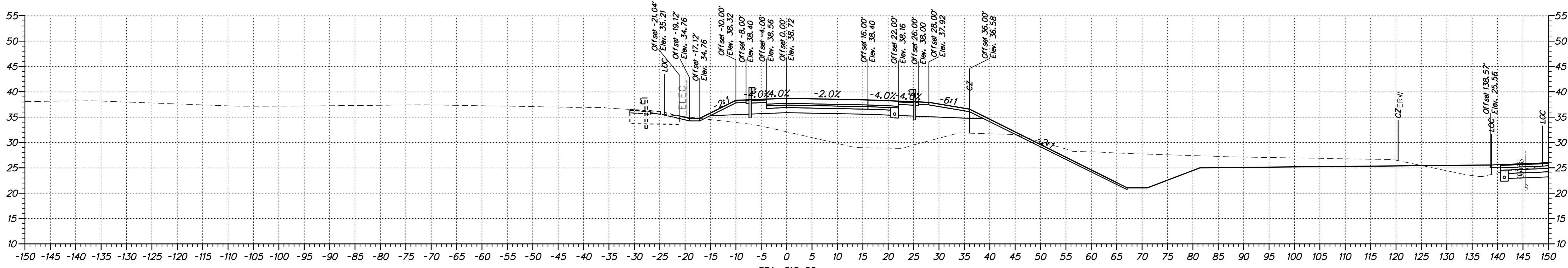
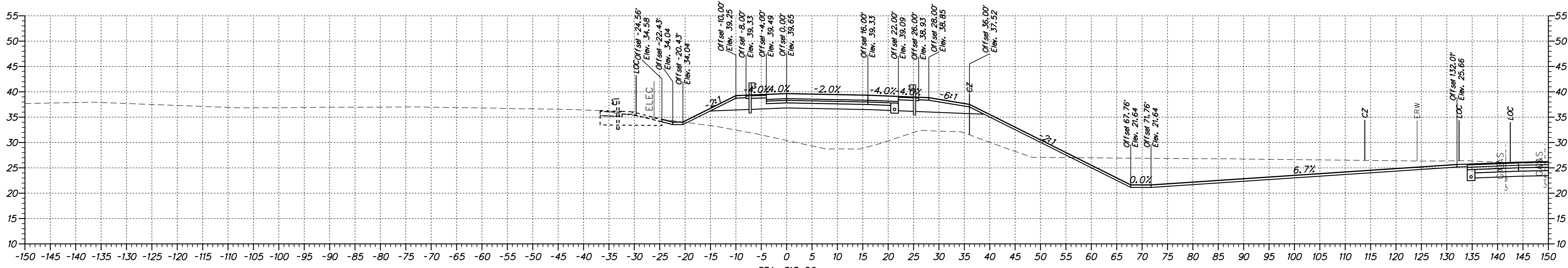
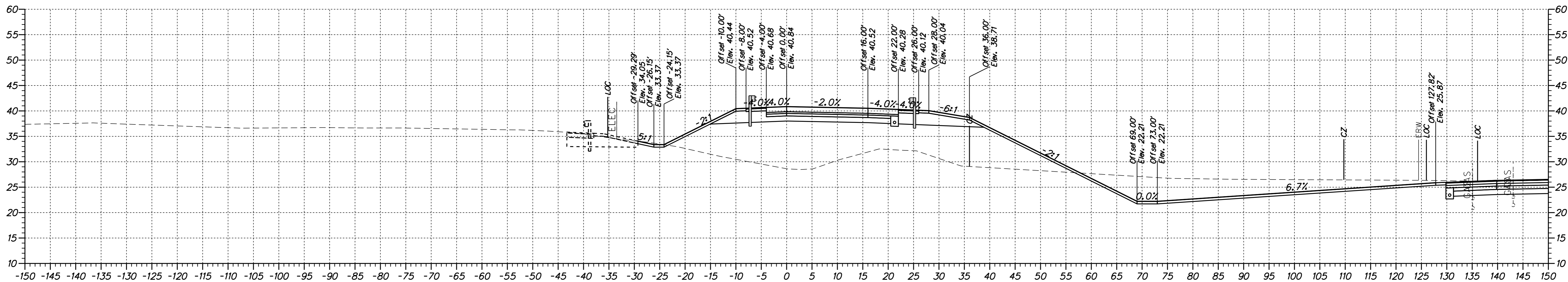


US 13 & PORT PENN RD INTERSECTION

CONTRACT	BRIDGE NO.
T201011302	DESIGNED BY: S.E.S.
COUNTY	CHECKED BY: B.R.T.
NEW CASTLE	

**CROSS SECTIONS
RAMP R**

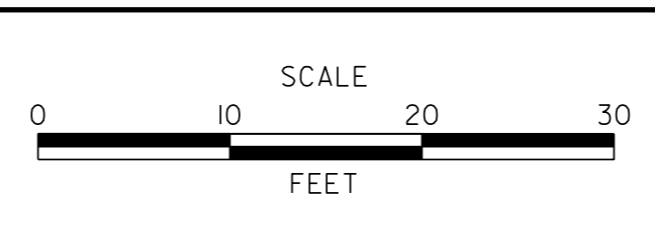
XS-11
SHEET NO.
12
TOTAL SHTS.
63



p:\31653-000\gen\cadd\1d\cadd\XS00U301_RompR_1D.dgn
 9/17/2015 3:58:45 PM



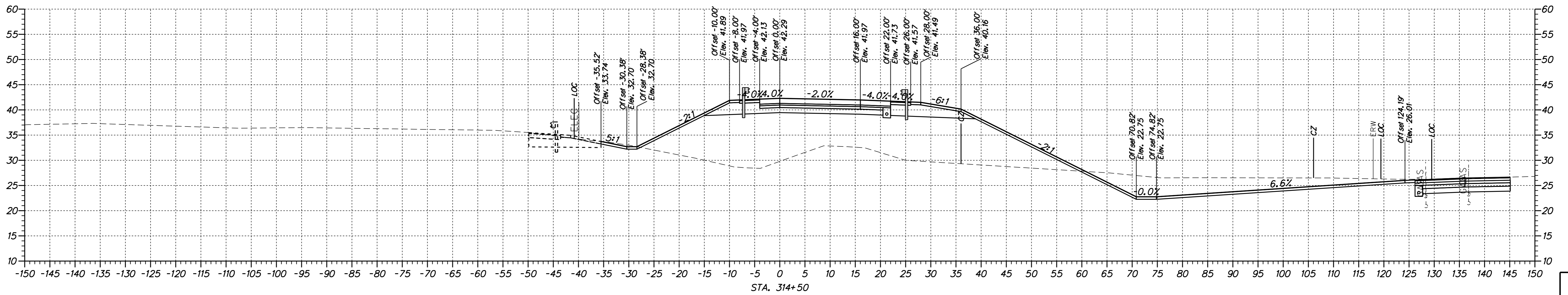
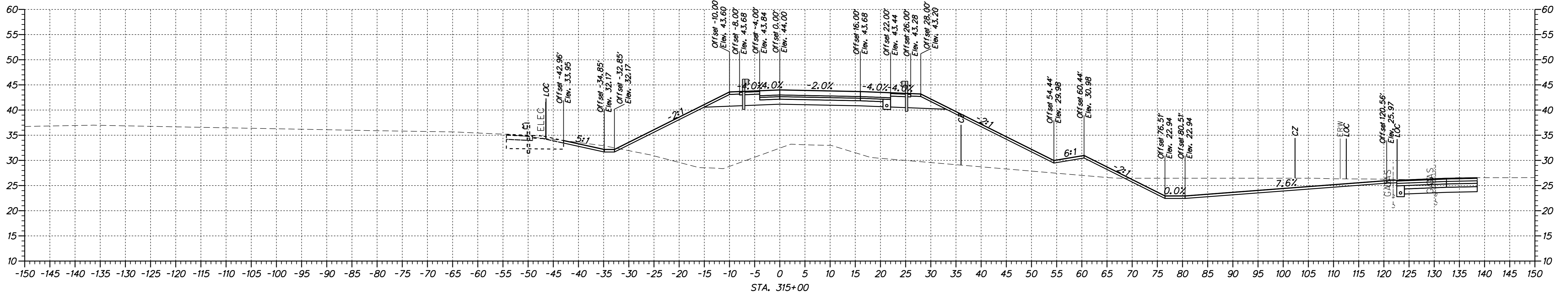
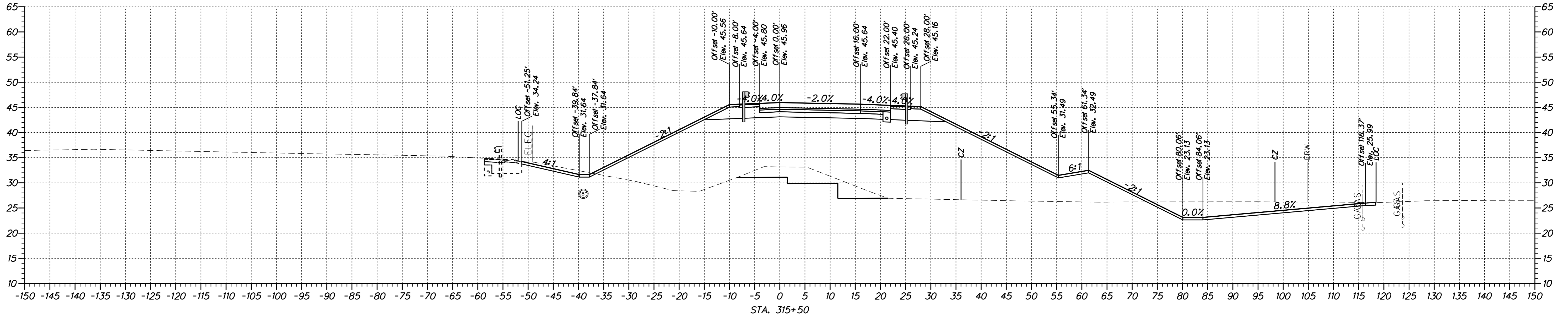
ADDENDUMS / REVISIONS	



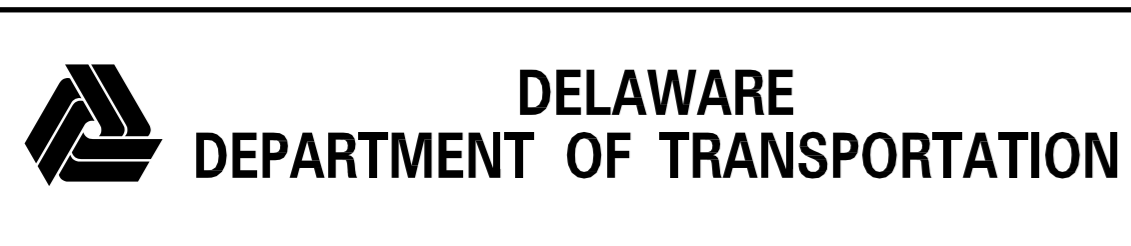
US 13 & PORT PENN RD INTERSECTION

CONTRACT T201011302	BRIDGE NO.
COUNTY NEW CASTLE	DESIGNED BY: S.E.S.
	CHECKED BY: B.R.T.

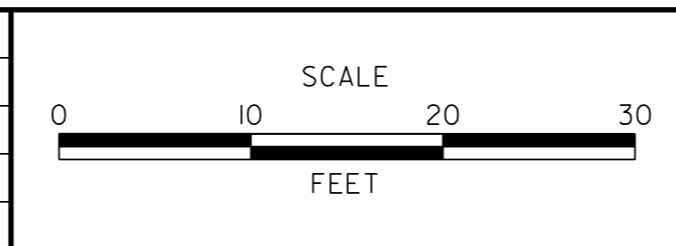
CROSS SECTIONS RAMP R
XS-12
SHEET NO. 13
TOTAL SHTS. 63



P:\1653-000\Drawings\1653-000\1653-000.dwg
 9/17/2015 3:58:45 PM
 P:\1653-000\Drawings\1653-000\1653-000.dwg



ADDENDUMS / REVISIONS	



**US 13 & PORT PENN RD
INTERSECTION**

CONTRACT T201011302	BRIDGE NO.
COUNTY NEW CASTLE	DESIGNED BY: S.E.S.
	CHECKED BY: B.R.T.

CROSS SECTIONS RAMP R	SHEET NO. 14
	TOTAL SHTS. 63

XS-13

