

GENERAL NOTES

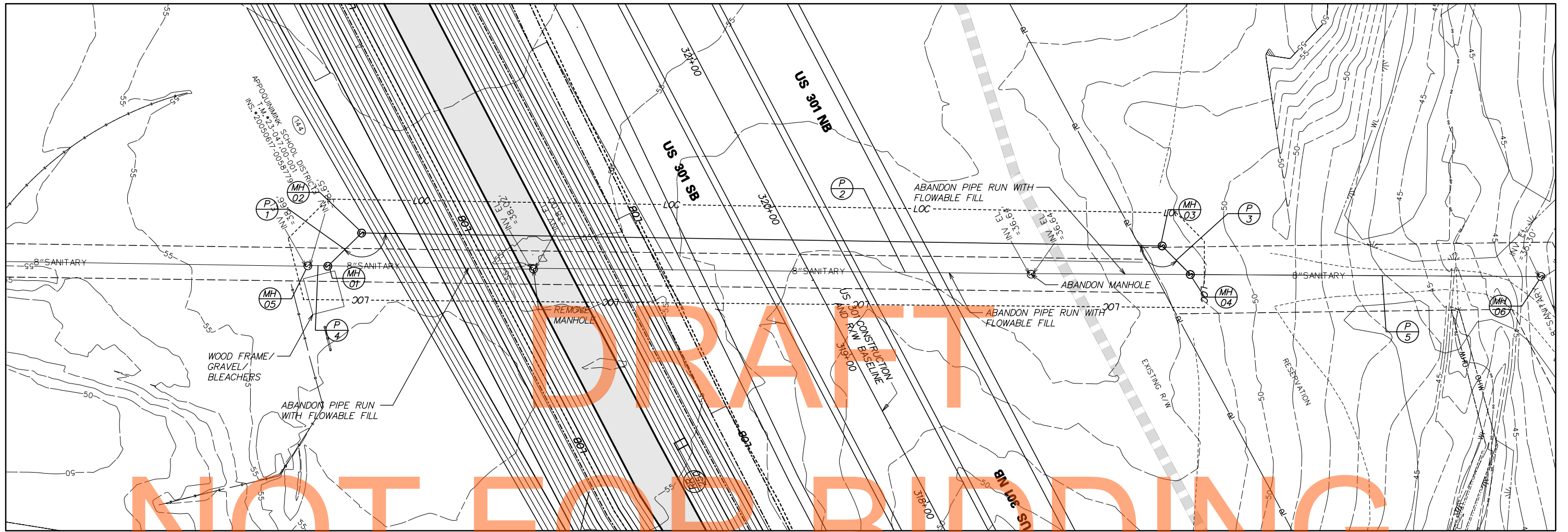
1. THE CONTRACTOR SHALL CONTACT THE TOWN OF MIDDLETOWN DEPARTMENT OF PUBLIC WORKS AT 302-378-2211 AT LEAST 48 HOURS IN ADVANCE OF STARTING CONSTRUCTION.
2. ALL UTILITIES PLOTTED ON THE DRAWINGS ARE FROM THE BEST AVAILABLE INFORMATION. THE CONTRACTOR, PRIOR TO LAYING A RUN OF PIPE OR OTHER INVOLVED CONSTRUCTION, SHALL EXCAVATE WITHIN THE ALIGNMENT AT POINTS OF POSSIBLE CONFLICT TO DETERMINE IF A CONFLICT EXISTS. ANY CONFLICTS SHALL BE COORDINATED BY THE CONTRACTOR WITH THE ENGINEER AND THE UTILITY INVOLVED. THE ENGINEER SHALL DETERMINE THE SOLUTION. EXCAVATING, BACK FILLING AND RESTORATION OF THE TEST HOLES AS REQUIRED FOR UTILITY INVESTIGATIONS SHALL BE CONSIDERED INCIDENTAL TO THE INSTALLATION OF THE UTILITIES AS SHOWN ON THE PLANS.
3. ALL CONSTRUCTION SHALL BE PERFORMED TO THE SATISFACTION OF THE ENGINEER, TOWN OF MIDDLETOWN DEPARTMENT OF PUBLIC WORKS (DPW), DELAWARE DEPARTMENT OF TRANSPORTATION (DELDOT) AND ALL RESPECTIVE UTILITY OWNERS IN ACCORDANCE WITH ALL APPLICABLE CONTRACT DRAWINGS AND SPECIFICATIONS.
4. THE CONTRACTOR SHALL COMPLY WITH ALL APPLICABLE LAWS, ORDINANCES, RULES, REGULATIONS AND ORDERS OF ANY PUBLIC BODY HAVING JURISDICTION. THE CONTRACTOR SHALL ERECT AND MAINTAIN, AS REQUIRED BY THE CONDITIONS AND PROGRESS OF THE WORK, ALL NECESSARY SAFEGUARDS FOR SAFETY AND PROTECTION IN ACCORDANCE W/APPLICABLE OSHA REGULATIONS.
5. NO DEBRIS SHALL BE BURIED ON SITE.
6. ALL COMMON FACILITIES INCLUDING, BUT NOT LIMITED TO: PAVED AREAS, SIDEWALKS, CURBING, LANDSCAPING, PUBLIC OPEN SPACE, AND/OR DRAINAGE FACILITIES SHALL BE KEPT IN GOOD REPAIR AND MAINTAINED IN A SAFE SANITARY CONDITION.
7. THE CONTRACTOR SHALL INSTALL THE PROPOSED UTILITIES WITH A MINIMUM OF 1 FT OF VERTICAL CLEARANCE AND 5 FT OF HORIZONTAL CLEARANCE FROM OTHER EXISTING AND PROPOSED UTILITIES. IN CASES WHERE THIS MINIMUM HORIZONTAL CLEARANCE IS NOT SHOWN OR FEASIBLE, THE CONTRACTOR MAY ALTER THESE MINIMUM CLEARANCES WITH THE APPROVAL OF THE TOWN OF MIDDLETOWN.
8. THE CONTRACTOR SHALL SUBMIT SHOP DRAWINGS FOR ALL MATERIALS FOR APPROVAL TO THE ENGINEER PRIOR TO COMMENCEMENT OF CONSTRUCTION. ALL MATERIALS ORDERED AND INSTALLED PRIOR TO THE ENGINEER'S REVIEW AND ACCEPTANCE WILL BE AT THE CONTRACTOR'S RISK.
9. ROUTINE PERIODIC INSPECTIONS DURING CONSTRUCTION OF THE UTILITY SYSTEM ARE DEEMED ACCEPTABLE TO THE OWNER AND DEPARTMENT. THESE INSPECTIONS DO NOT RELIEVE THE CONTRACTOR FROM HIS OBLIGATION AND RESPONSIBILITY FOR CONSTRUCTING IN STRICT ACCORDANCE WITH THE STANDARDS AND SPECIFICATIONS OF THE OWNER.
10. AFTER TESTING IS COMPLETE AND ALL COMPONENTS OF THE UTILITY SYSTEM ARE DEEMED ACCEPTABLE TO THE OWNER AND DEPARTMENT, THE CONTRACTOR SHALL SUBMIT THE AS-BUILT DRAWINGS TO THE OWNER. ANY DISCREPANCIES NOTED DURING THE FINAL INSPECTION SHALL BE CORRECTED BY THE CONTRACTOR WITHIN 30 DAYS.
11. THE CONTRACTOR SHALL MAINTAIN ONE COMPLETE SET OF CONTRACT DRAWINGS ON WHICH HE SHALL NOTE, IN RED, THE ALIGNMENTS AND INVERTS OF ALL UNDERGROUND UTILITIES THAT ARE INSTALLED OR ENCOUNTERED DURING THE EXECUTION OF THE WORK. ALL DISCREPANCIES BETWEEN THE PLAN LOCATIONS AND ELEVATIONS OF BOTH THE EXISTING AND PROPOSED UTILITIES SHALL BE SHOWN ON THE AS-BUILT DRAWINGS TO BE MAINTAINED BY THE CONTRACTOR IN THE FIELD.
12. THE CONTRACTOR SHALL CONTACT BOB HERSHEY OF APPOQUINIMINK SCHOOL DISTRICT AT 302-376-4128. A MINIMUM 2 WEEKS IN ADVANCE OF STARTING CONSTRUCTION TO COORDINATE THE TEMPORARY RELOCATION OF THE PORTABLE STEEL BLEACHERS.

DRAFT
NOT FOR BIDDING
AUGUST 2015

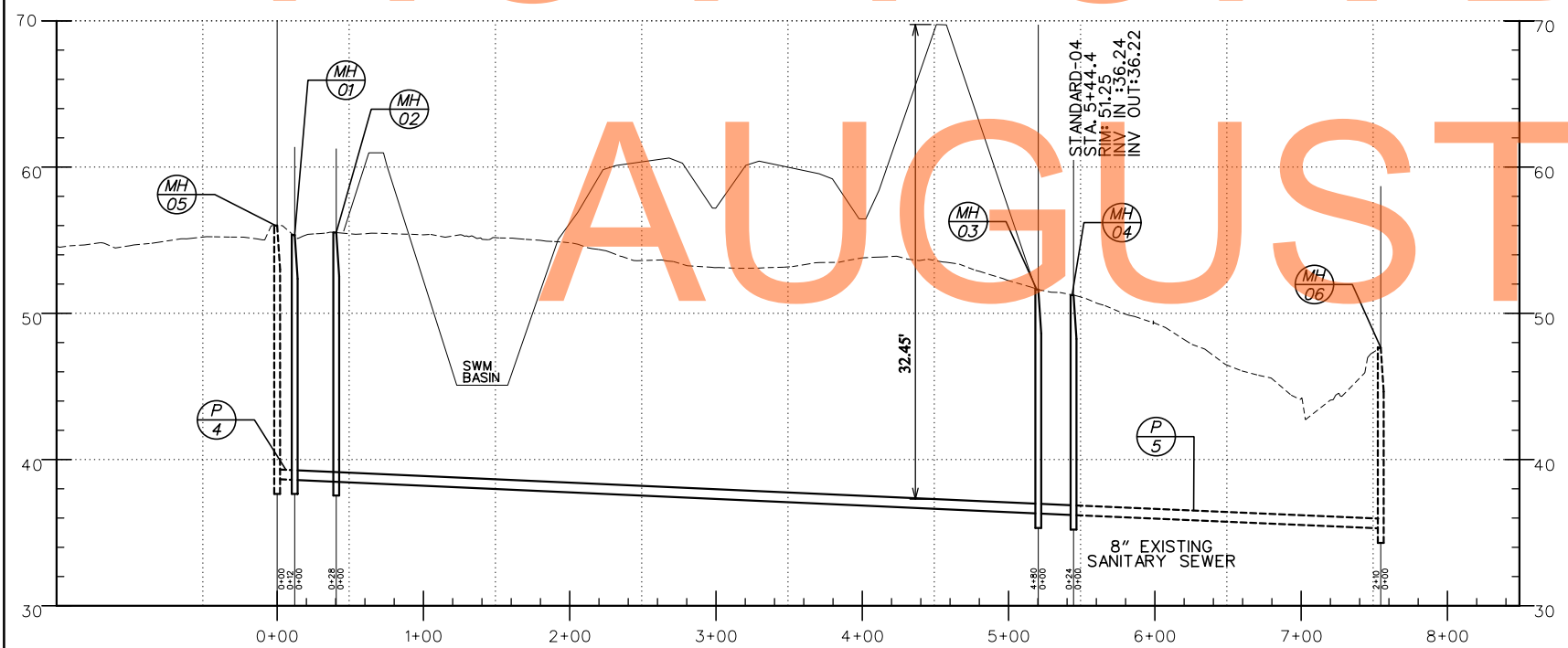
P:\CADD\26049040 US301\CIVIL\PLANS\2A\CP\AET\UR-01.DGN

SANITARY SEWER PLAN

 DELAWARE DEPARTMENT OF TRANSPORTATION	ADDENDUMS / REVISIONS	NOT TO SCALE	US 301 LEVELS ROAD TO SUMMIT BRIDGE ROAD	CONTRACT	BRIDGE NO.	UTILITY RELOCATION PLAN	UR-01
				T20091303	DESIGNED BY: JW JW		SHEET NO. 1032
				COUNTY	CHECKED BY: DRB SF	TOTAL SHTS. 1256	
				NEW CASTLE			



NOT FOR BIDDING



SANITARY MANHOLE SCHEDULE

NO.	STATION	OFFSET	TYPE/SIZE	T.G. EL.	INV. EL.
01	0+12.00	00.00	TYPE A2	55.36	38.58
02	0+40.40	00.00	TYPE A2	55.53	38.45
03	5+20.40	00.00	TYPE A2	51.62	36.34
04	5+44.40	00.00	TYPE A2	51.25	38.65

SANITARY PIPE SCHEDULE

NO.	SIZE / TYPE	CLASS	LENGTH	SLOPE	INT. EL.	DIS. EL.
1	8" D. I.	54	28.0'	0.40%	38.58	38.47
2	8" D. I.	54	480.0'	0.44%	38.45	36.36
3	8" D. I.	54	24.0'	0.40%	36.34	36.24

EXISTING SANITARY MANHOLE SCHEDULE

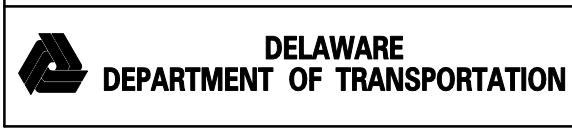
NO.	STATION	OFFSET	TYPE/SIZE	T.G. EL.	INV. EL.
05	0+00.00	00.00	-	56.00	38.65
06	7+54.41	00.00	-	47.65	35.30

EXISTING SANITARY PIPE SCHEDULE

NO.	SIZE / TYPE	CLASS	LENGTH	SLOPE	INT. EL.	DIS. EL.
4	8" D. I.	54	12.0'	0.49%	38.65	38.60
5	8" D. I.	54	210.0'	0.43%	36.22	35.30

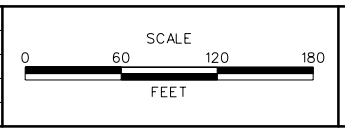
- NOTE:**
- CALL MISS UTILITY (1-800-257-7777) 48 HOURS BEFORE WORK IS TO BEGIN.
 - 48-HOUR NOTICE MUST BE GIVEN TO THE TOWN OF MIDDLETOWN PRIOR TO ANY CONSTRUCTION STARTING.
 - ALL CONSTRUCTION AND MATERIALS SHALL BE IN ACCORDANCE WITH THE TOWN OF MIDDLETOWN'S "MANUAL OF CONSTRUCTION SPECIFICATIONS AND DETAILS FOR ROADS AND UTILITIES."

SANITARY SEWER PLAN



ADDENDUMS / REVISIONS

NO.	DATE	DESCRIPTION



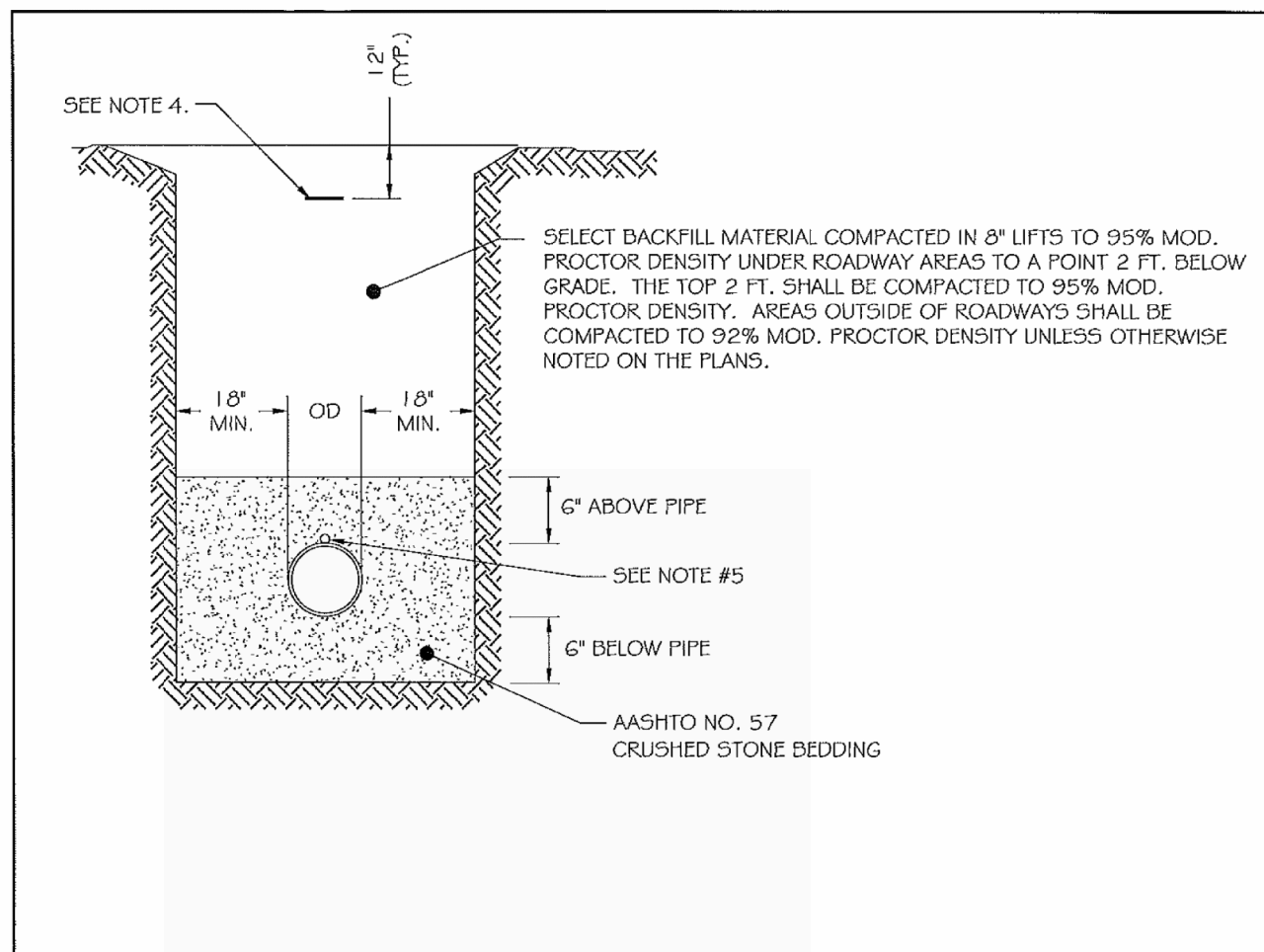
**US 301
LEVELS ROAD
TO SUMMIT BRIDGE ROAD**

CONTRACT T20091303	BRIDGE NO.
COUNTY NEW CASTLE	DESIGNED BY: JW JW
	CHECKED BY: DRB SF

UTILITY RELOCATION PLAN

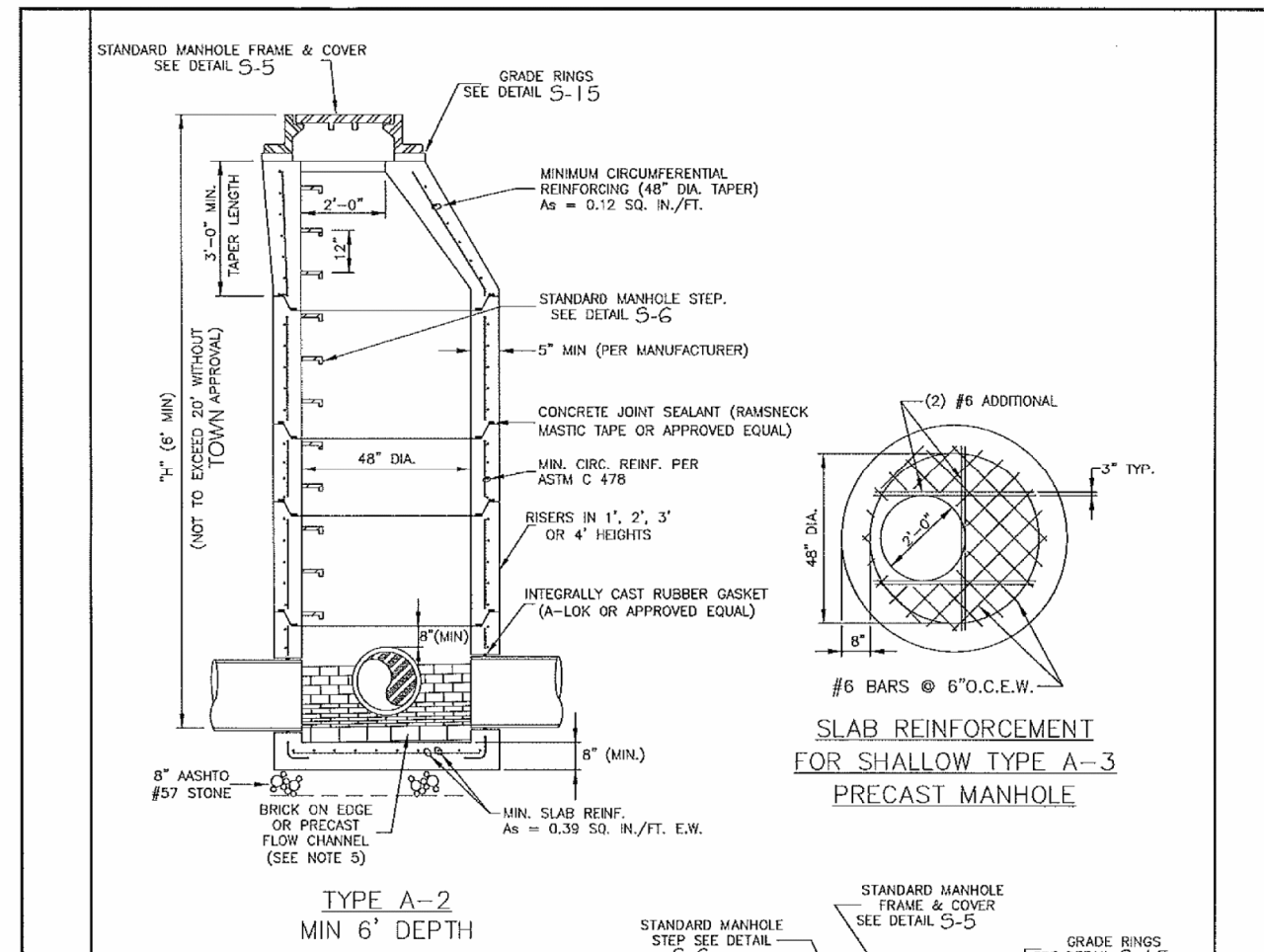
UR-02
SHEET NO. 1033
TOTAL SHTS. 1256

P:\CADD\2009\04\US301\CIVIL\PLANS\2A\CPLA\ET.UR-02.DGN



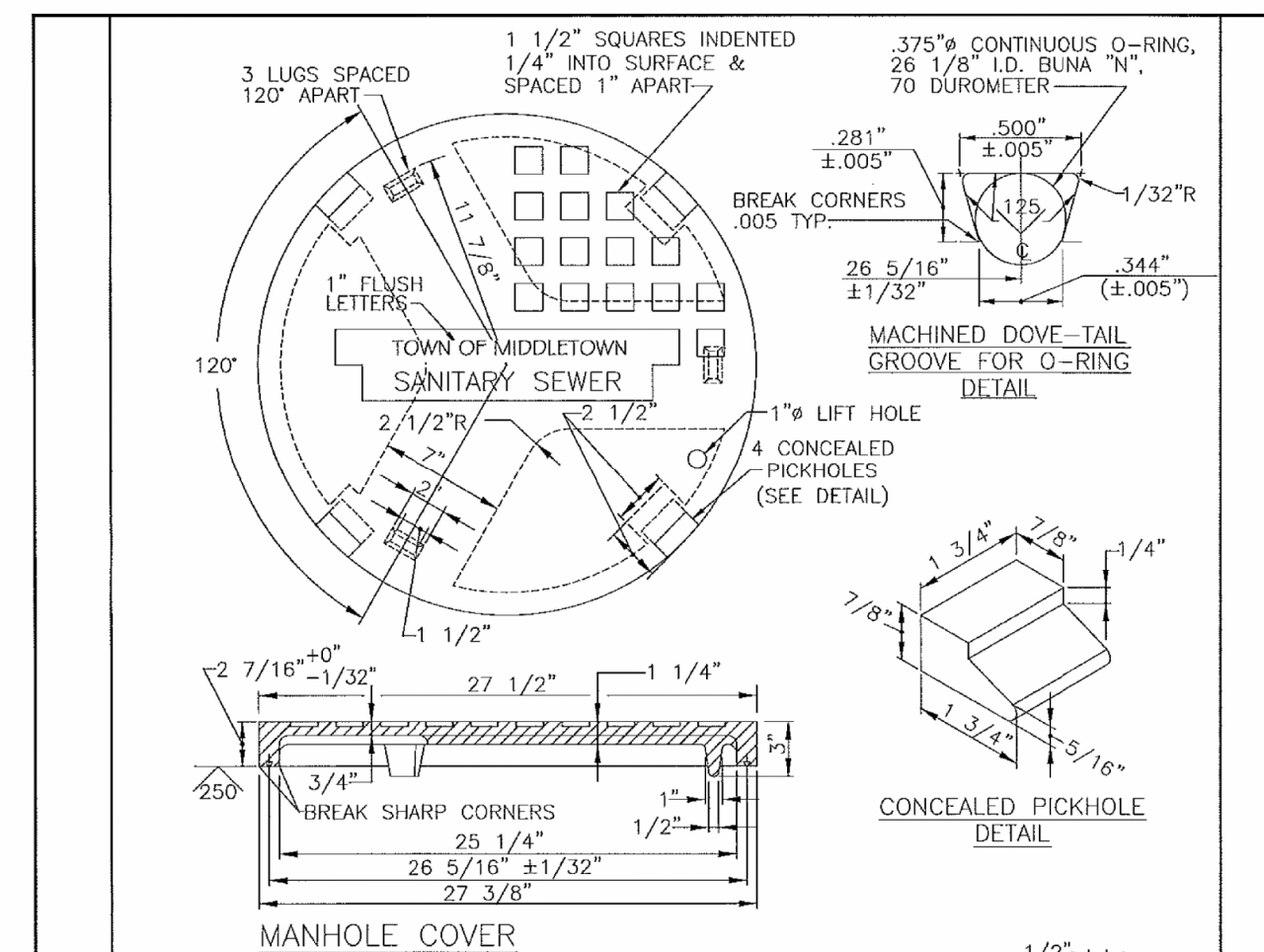
- NOTES:
- TRENCH SHALL BE BRACED OR SHIELDED IN ACCORDANCE WITH OSHA REGULATIONS.
 - PROVIDE BEARING FULL LENGTH OF BARREL.
 - DIG BELL HOLES.
 - INSTALL METALLIC DETECTOR TAPE FOR GRAVITY MAINS LOCATED OUTSIDE THE ROAD RIGHT-OF-WAY AND FORCEMAINS PER SPECS AT 1' BELOW FINISHED GRADE.
 - TRACER WIRE TO BE INSTALLED ON ALL FORCEMAINS.

ISSUED	2010		PIPE BEDDING & TRENCH DETAIL
REVISED			SANITARY SEWER DETAILS
SOURCE		DEPARTMENT OF PUBLIC WORKS	STANDARD NO. S-1



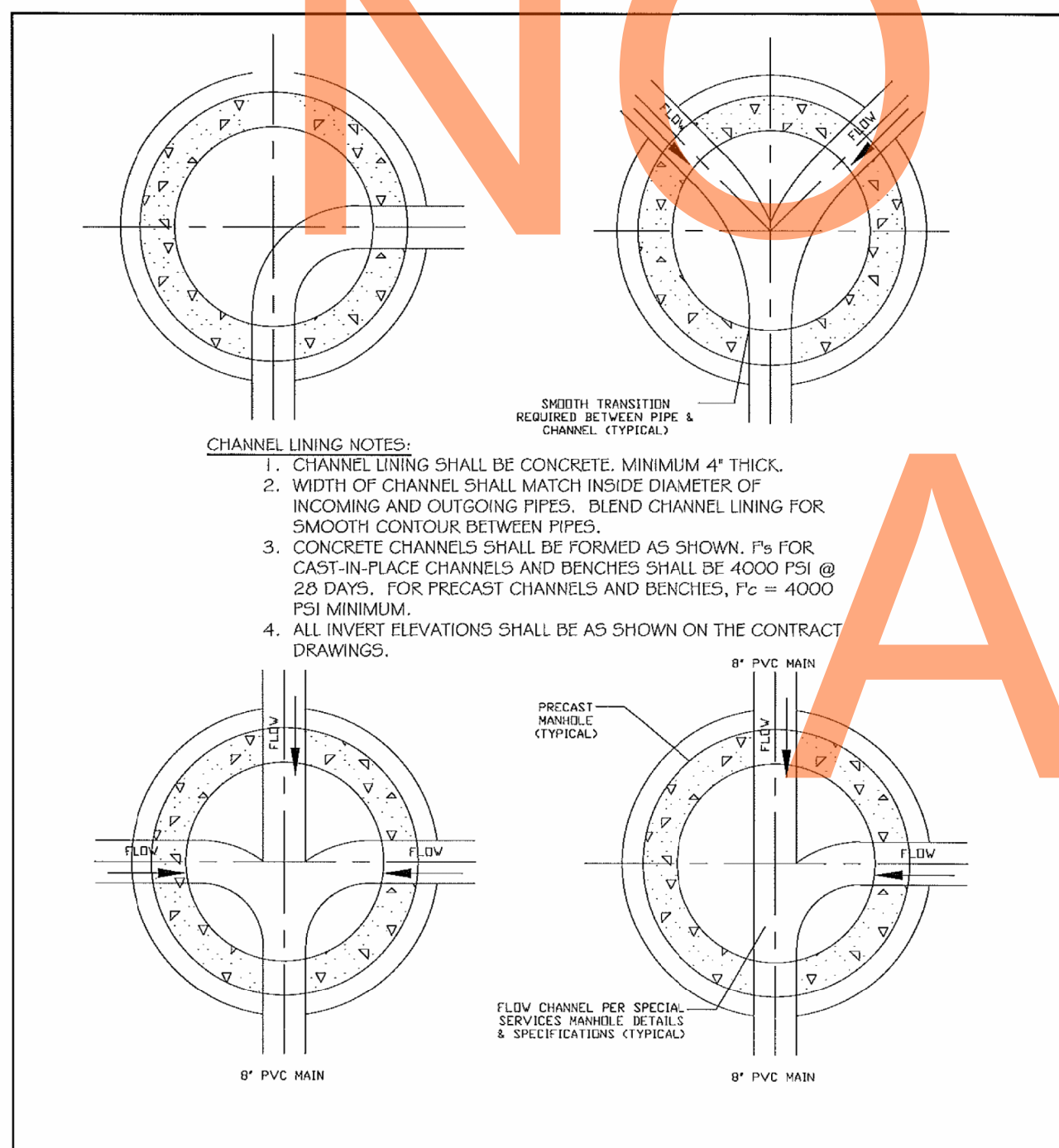
- NOTES:
- UNLESS OTHERWISE NOTED, MANHOLE TAPERS, REINFORCING BARS AND BENCHES SHALL BE FURNISHED IN SITU ACCORDANCE WITH ITEM DESCRIPTION C470 (OR LATEST) FOR PRECAST REINFORCED CONCRETE MANHOLES.
 - ALL MANHOLES SHALL BE 4000 PSI MIN. CONCRETE, EXCEPT AS NOTED.
 - REINFORCING FOR TYPE A-3 MANHOLE SHALL BE TYPE A-2 MANHOLE, EXCEPT AS NOTED.
 - MANHOLE STEPS SHALL BE SPACED AS SHOWN IN A SINGLE VERTICAL ALIGNMENT. THE STEPS SHALL NOT BE SPACED TO CENTERLINE OF STEP ORIENTATION TO BE ALIGNED OVER TOP OF BENCH AND NOT FLOW CHANNEL. BOTTOM STEP SHALL BE WITHIN 12" OF THE BENCH.
 - FLOW CHANNEL IN MANHOLE MAY BE BRICK ON EDGE OR PRECAST CONCRETE (4000 PSI MIN). NO CAST IN PLACE FLOW CHANNELS. SLOPE OF BRICK TO BE 1/4" FT. MIN. TOWARD CHANNEL.
 - SLOPE ACROSS MANHOLE CHANNEL TO BE 0.1" MIN.

ISSUED	2010		STANDARD 48" PRECAST CONCRETE MANHOLE
REVISED			SANITARY SEWER DETAILS
SOURCE	NEW CASTLE COUNTY	DEPARTMENT OF PUBLIC WORKS	STANDARD NO. S-2

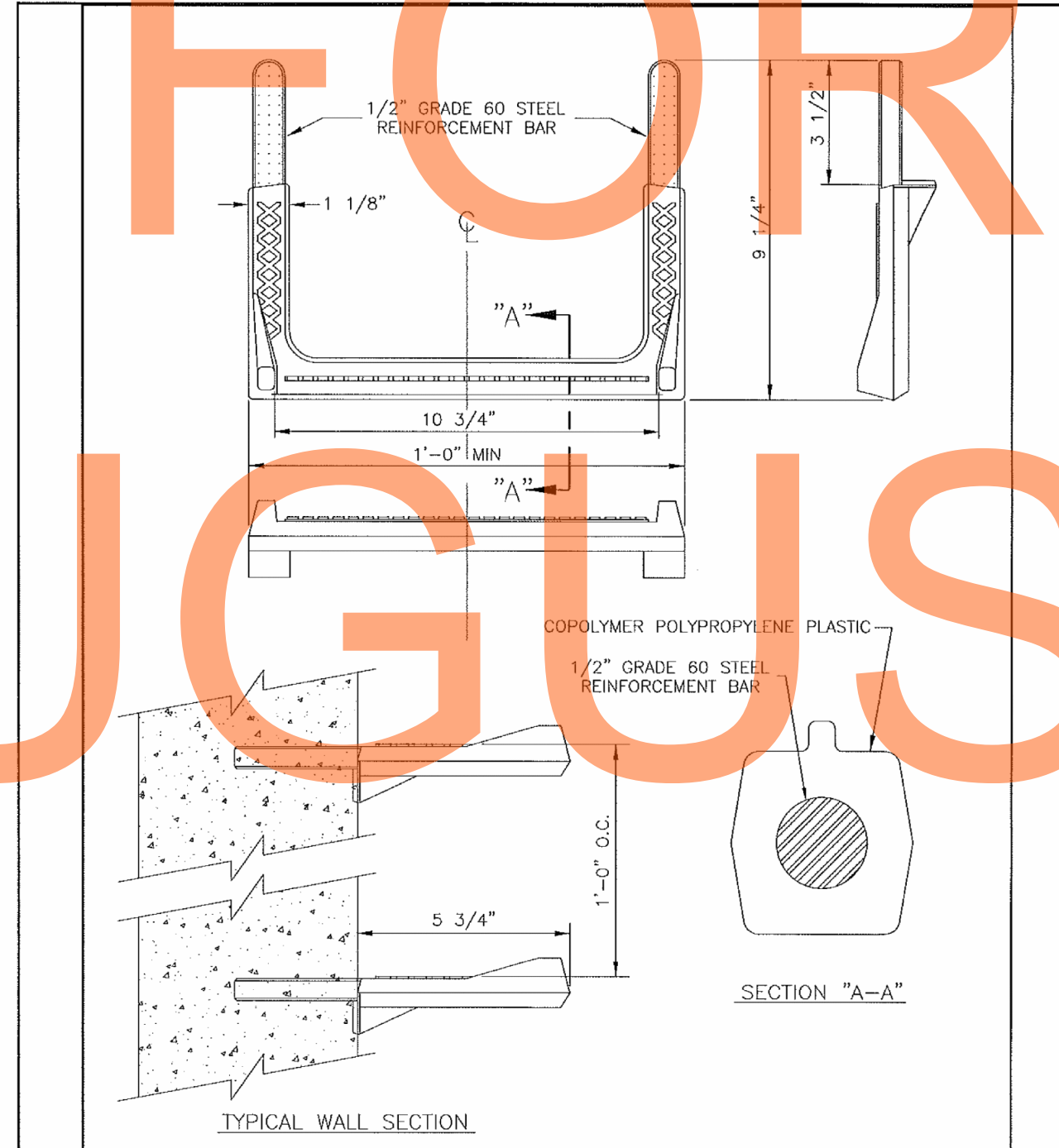


- NOTES:
- UNLESS OTHERWISE NOTED, MANHOLE TAPERS, REINFORCING BARS AND BENCHES SHALL BE FURNISHED IN SITU ACCORDANCE WITH ITEM DESCRIPTION C470 (OR LATEST) FOR PRECAST REINFORCED CONCRETE MANHOLES.
 - ALL MANHOLES SHALL BE 4000 PSI MIN. CONCRETE, EXCEPT AS NOTED.
 - REINFORCING FOR TYPE A-3 MANHOLE SHALL BE TYPE A-2 MANHOLE, EXCEPT AS NOTED.
 - MANHOLE STEPS SHALL BE SPACED AS SHOWN IN A SINGLE VERTICAL ALIGNMENT. THE STEPS SHALL NOT BE SPACED TO CENTERLINE OF STEP ORIENTATION TO BE ALIGNED OVER TOP OF BENCH AND NOT FLOW CHANNEL. BOTTOM STEP SHALL BE WITHIN 12" OF THE BENCH.
 - FLOW CHANNEL IN MANHOLE MAY BE BRICK ON EDGE OR PRECAST CONCRETE (4000 PSI MIN). NO CAST IN PLACE FLOW CHANNELS. SLOPE OF BRICK TO BE 1/4" FT. MIN. TOWARD CHANNEL.
 - SLOPE ACROSS MANHOLE CHANNEL TO BE 0.1" MIN.

ISSUED	2010		STANDARD MANHOLE FRAME AND COVER
REVISED			SANITARY SEWER DETAILS
SOURCE	NEW CASTLE COUNTY	DEPARTMENT OF PUBLIC WORKS	STANDARD NO. S-5



ISSUED	2010		TYPICAL CHANNELIZATION OF MAINLINE SEWER MANHOLES
REVISED			SANITARY SEWER DETAILS
SOURCE		DEPARTMENT OF PUBLIC WORKS	STANDARD NO. S-9

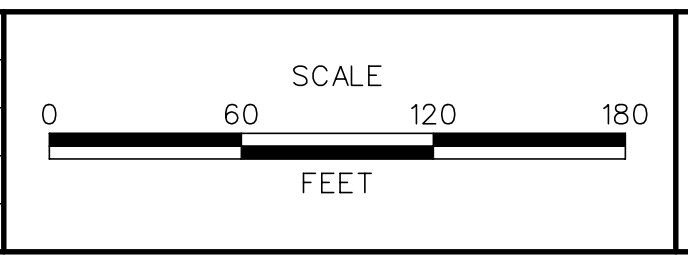


ISSUED	2010		SANITARY SEWER MANHOLE STEPS
REVISED			SANITARY SEWER DETAILS
SOURCE	NEW CASTLE COUNTY	DEPARTMENT OF PUBLIC WORKS	STANDARD NO. S-6

NOT FOR BIDDING AUGUST 2015

G:\60049040_US301\CIVIL\PLANS\2A.CP.UR-03.DGN

ADDENDUMS / REVISIONS



US 301 LEVELS ROAD TO SUMMIT BRIDGE ROAD

CONTRACT	T20091303
COUNTY	NEW CASTLE
BRIDGE NO.	
DESIGNED BY:	JW
CHECKED BY:	DRB

UTILITY RELOCATION PLAN

UR-03
SHEET NO.
1034
TOTAL SHTS.
1256