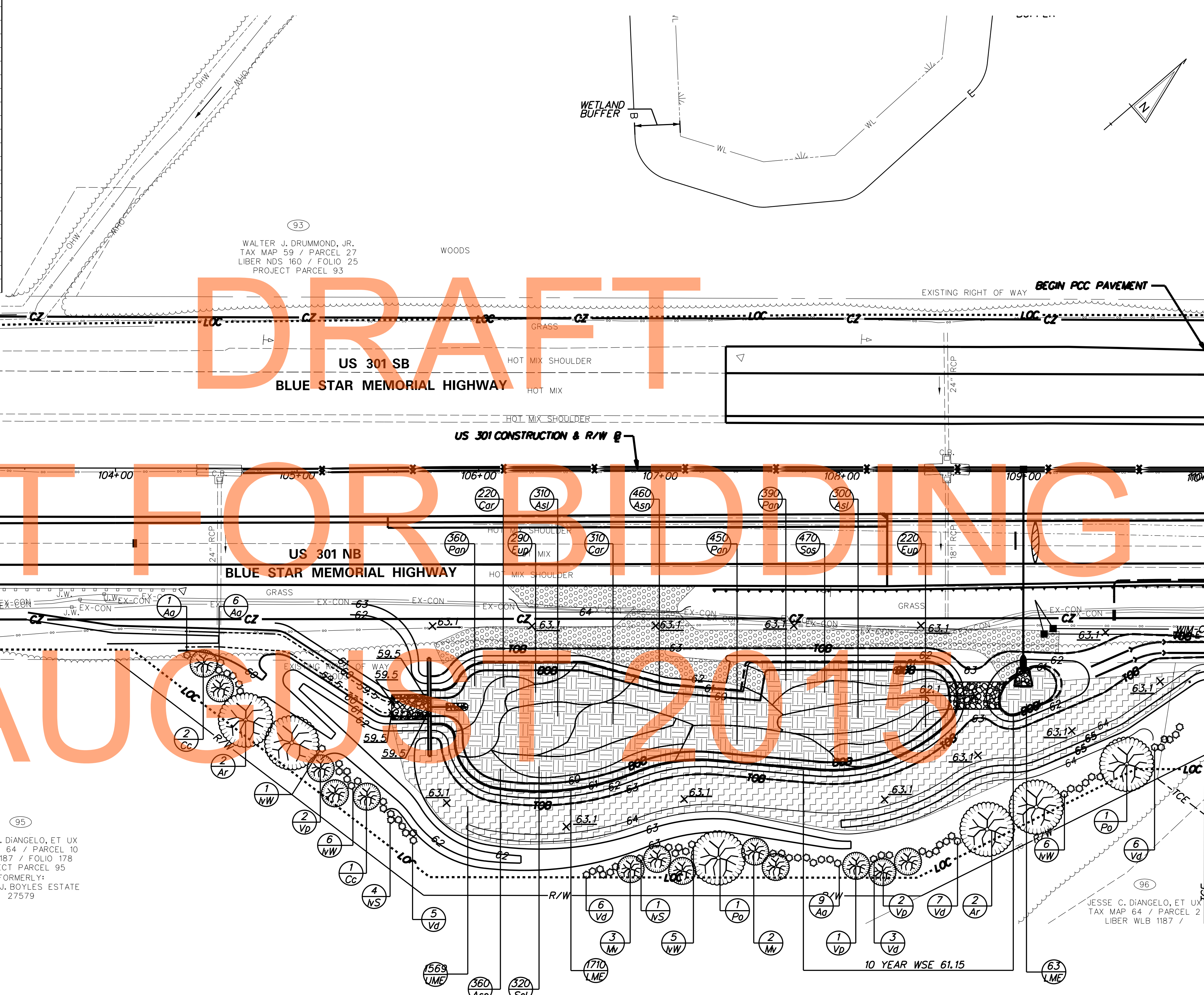


LANDSCAPE PLANTING SCHEDULE		
KEY	PLANTING DESCRIPTION	QUANTITY
MAJOR DECIDUOUS TREES		
Ar	<i>Acer rubrum</i> 'Red Sunset'	4
Po	<i>Platanus occidentalis</i>	2
MINOR DECIDUOUS TREES		
Cc	<i>Cercis canadensis</i>	3
Mv	<i>Magnolia virginiana</i>	5
Vp	<i>Viburnum prunifolium</i>	5
SHRUBS		
Aa	<i>Aronia arbutifolia</i> 'Brilliantissima'	16
IvS	<i>Ilex verticillata</i> 'Southern Gentleman'	5
IvW	<i>Ilex verticillata</i> 'Winter Red'	18
Vd	<i>Viburnum dentatum</i>	27
PLUGS		
Asl	<i>Aster lateriflorus</i>	610
Asn	<i>Aster novae-angliae</i>	820
Car	<i>Carex typhina</i>	530
Eup	<i>Eupatorium dubium</i>	510
Pan	<i>Panicum virgatum</i>	1200
Sol	<i>Solidago rugosa</i>	320
Sos	<i>Solidago sempervirens</i>	470
OTHER		
LME	Lowland Meadow Establishment Area, SY	1773
UME	Upland Meadow Establishment Area, SY	1569



LANDSCAPE LEGEND

- Major Deciduous Tree
- Evergreen Trees
- Minor Deciduous Tree
- Shrubs
- Maintenance Access Road
- Wet Meadow Establishment Area
- Upland Meadow Establishment Area
- Lowland Meadow Establishment and Plug Planting Area

LANDSCAPE NOTES

Refer to Landscape Planting Schedule and Notes sheet for summary of quantities and planting notes.

All areas of disturbance within Maryland that are not indicated to receive a specific seed mixture as detailed on the Landscaping Plans, shall be seeded with Maryland Turfgrass Seed Mix. The Permanent Seeding Summary table as shown on the Erosion Control Plan is the MDE Permanent Seeding minimum standard and has been provided for reference only.

All maintenance access roads shall be seeded with Maryland Turfgrass Seed Mix.

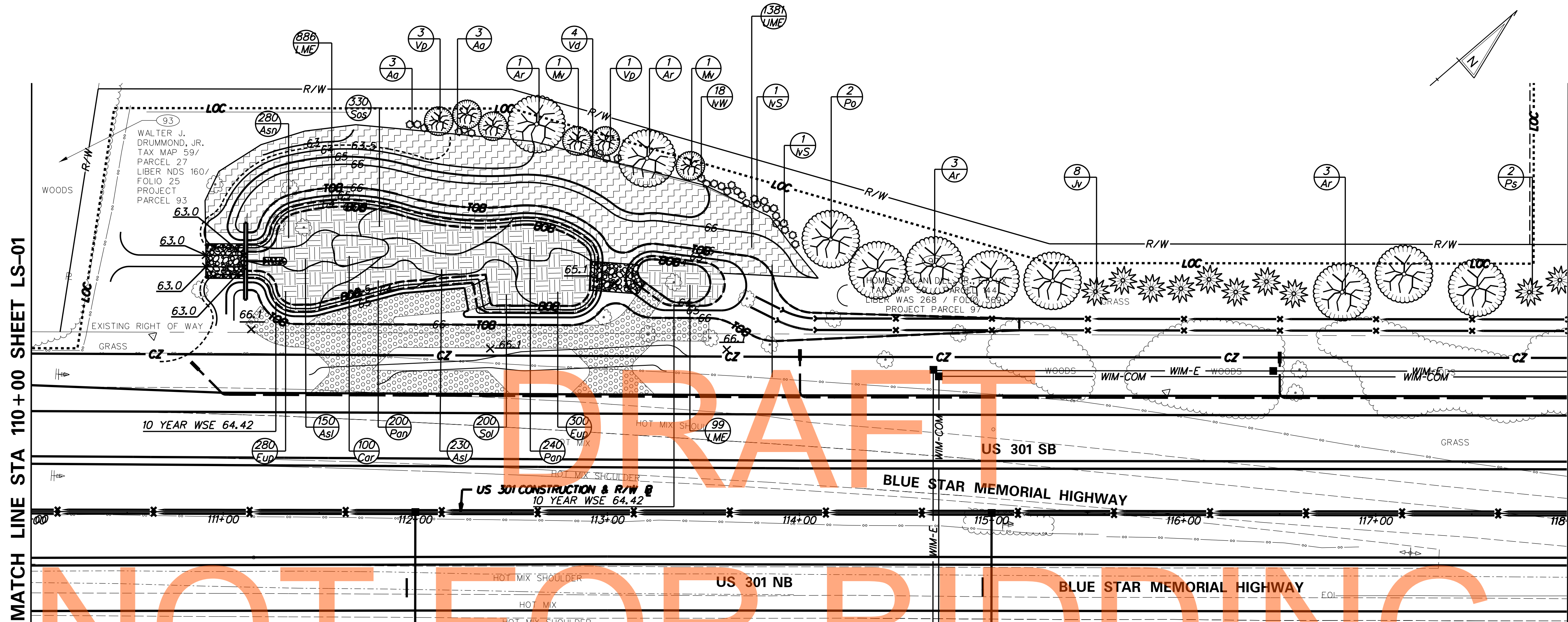
Straw mulch shall not be used in Lowland Meadow Establishment Areas. Only Wood Cellulose Fiber Mulch shall be used in the Lowland Meadow Establishment Areas.

95
 JESSE C. DIANGELO, ET UX
 TAX MAP 64 / PARCEL 10
 LIBER 1187 / FOLIO 178
 PROJECT PARCEL 95
 FORMERLY:
 WILLIAM J. BOYLES ESTATE
 27579

96
 JESSE C. DIANGELO, ET UX
 TAX MAP 64 / PARCEL 2
 LIBER WLB 1187 /

MATCH LINE STA 110+00 SHEET LS-02

LS-01



MATCH LINE STA 110+00 SHEET LS-01

MATCH LINE STA 118+00 SHEET LS-03

DRAFT

NOT FOR BIDDING

AUGUST 2015

LANDSCAPE LEGEND

- Major Deciduous Tree
- Evergreen Trees
- Minor Deciduous Tree
- Shrubs
- Maintenance Access Road
- Wet Meadow Establishment Area
- Upland Meadow Establishment Area
- Lowland Meadow Establishment and Plug Planting Area

LANDSCAPE PLANTING SCHEDULE		
KEY	PLANTING DESCRIPTION	QUANTITY
MAJOR DECIDUOUS TREES		
Ar	<i>Acer rubrum</i> 'Red Sunset'	10
Po	<i>Platanus occidentalis</i>	7
EVERGREEN TREES		
Jv	<i>Juniperus virginiana</i>	13
Ps	<i>Pinus strobus</i>	9
MINOR DECIDUOUS TREES		
Mv	<i>Magnolia virginiana</i>	2
Vp	<i>Viburnum prunifolium</i>	4
SHRUBS		
Aa	<i>Aronia arbutifolia</i> 'Brilliantissima'	6
IvS	<i>Ilex verticillata</i> 'Southern Gentleman'	2
IvW	<i>Ilex verticillata</i> 'Winter Red'	18
Vd	<i>Viburnum dentatum</i>	4
PLUGS		
Asl	<i>Aster lateriflorus</i>	380
Asn	<i>Aster novae-angliae</i>	280
Car	<i>Carex typhina</i>	100
Eup	<i>Eupatorium dubium</i>	580
Pan	<i>Panicum virgatum</i>	440
Sol	<i>Solidago rugosa</i>	200
Sos	<i>Solidago sempervirens</i>	330
OTHER		
LME	Lowland Meadow Establishment Area, SY	985
UME	Upland Meadow Establishment Area, SY	1381

LANDSCAPE NOTES

Refer to Landscape Planting Schedule and Notes sheet for summary of quantities and planting notes.

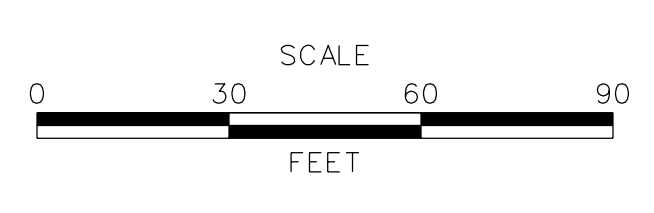
All areas of disturbance within Maryland that are not indicated to receive a specific seed mixture as detailed on the Landscaping Plans, shall be seeded with Maryland Turfgrass Seed Mix. The Permanent Seeding Summary table as shown on the Erosion Control Plan is the MDE Permanent Seeding minimum standard and has been provided for reference only.

All maintenance access roads shall be seeded with Maryland Turfgrass Seed Mix.

Straw mulch shall not be used in Lowland Meadow Establishment Areas. Only Wood Cellulose Fiber Mulch shall be used in the Lowland Meadow Establishment Areas.



ADDENDUMS / REVISIONS



**US 301
MARYLAND STATE LINE
TO LEVELS ROAD**

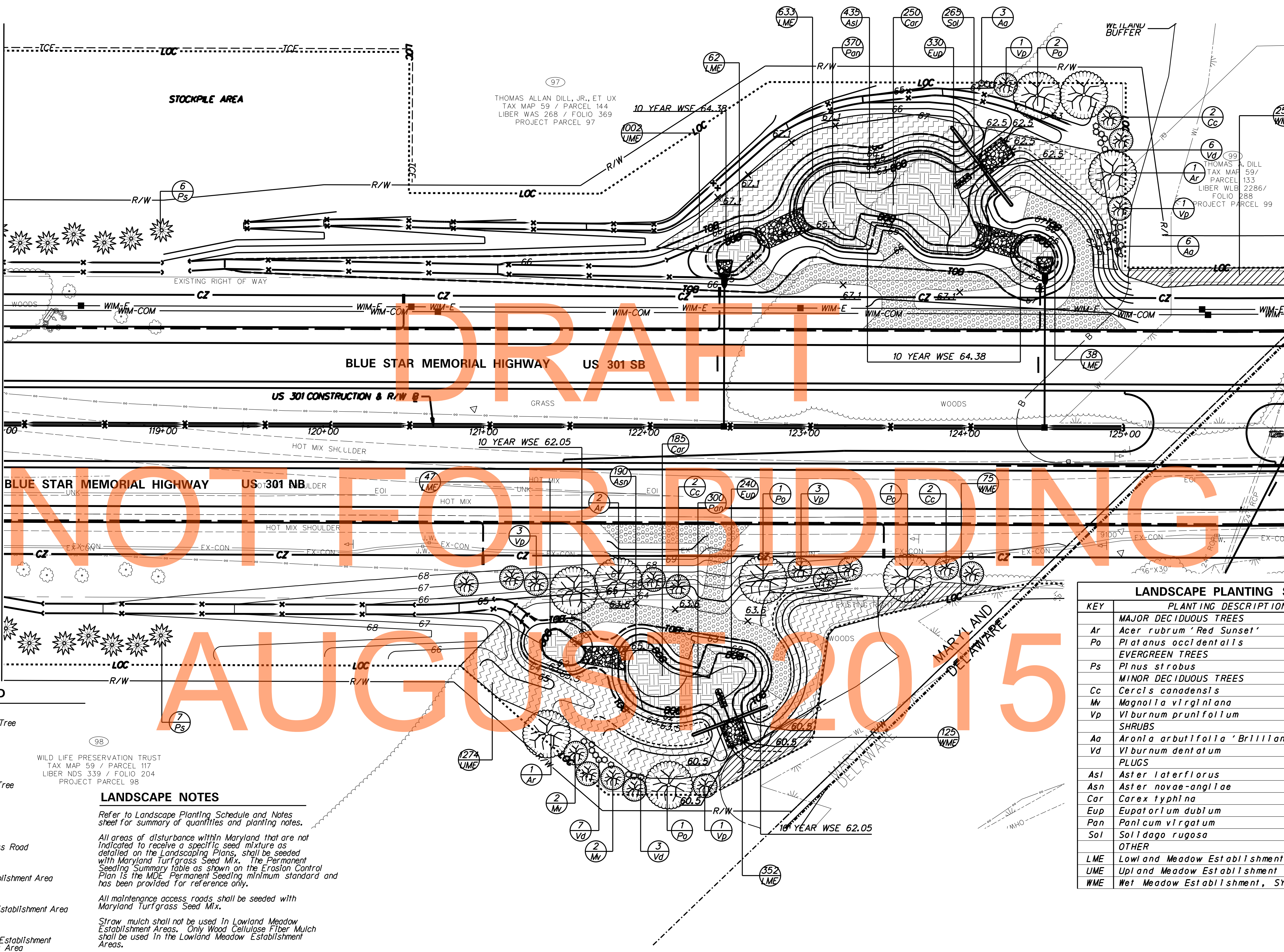
CONTRACT T200811301	BRIDGE NO.	DESIGNED BY: DMS
COUNTY CECIL	CHECKED BY: AJC	

LANDSCAPING PLAN	SHEET NO. 649
TOTAL SHTS. 850	

LS-02

MATCH LINE STA 118+00 SHEET LS-02

MATCH LINE STA 126+00 SHEET LS-04



LANDSCAPE LEGEND

- Major Deciduous Tree
- Evergreen Trees
- Minor Deciduous Tree
- Shrubs
- Maintenance Access Road
- Wet Meadow Establishment Area
- Upland Meadow Establishment Area
- Lowland Meadow Establishment and Plug Planting Area

LANDSCAPE NOTES

Refer to Landscape Planting Schedule and Notes sheet for summary of quantities and planting notes.

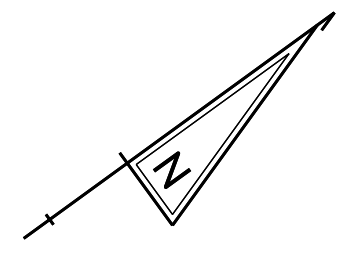
All areas of disturbance within Maryland that are not indicated to receive a specific seed mixture as detailed on the Landscaping Plans, shall be seeded with Maryland Turfgrass Seed Mix. The Permanent Seeding Summary table as shown on the Erosion Control Plan is the MDE Permanent Seeding minimum standard and has been provided for reference only.

All maintenance access roads shall be seeded with Maryland Turfgrass Seed Mix.

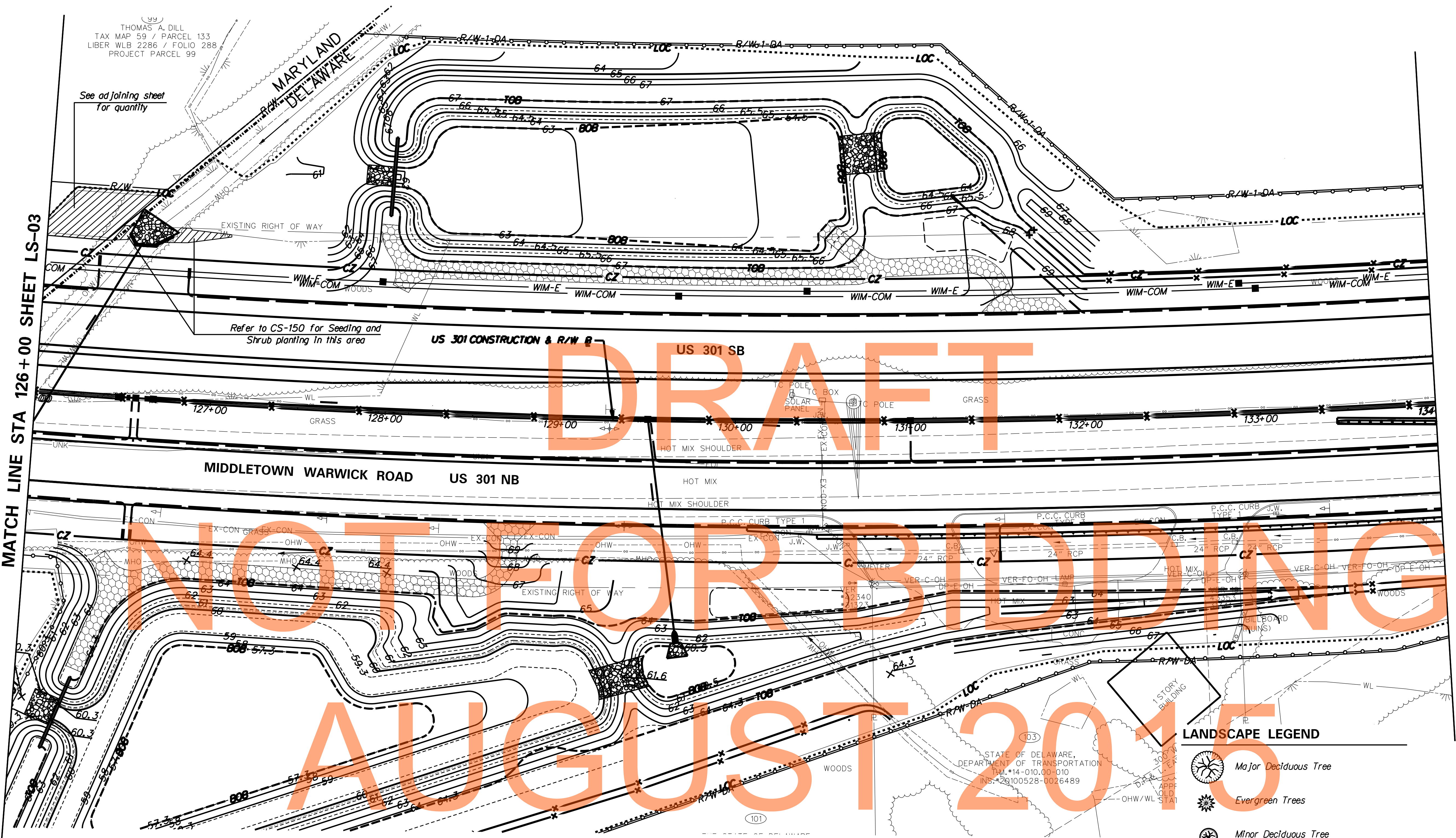
Straw mulch shall not be used in Lowland Meadow Establishment Areas. Only Wood Cellulose Fiber Mulch shall be used in the Lowland Meadow Establishment Areas.

LANDSCAPE PLANTING SCHEDULE		
KEY	PLANTING DESCRIPTION	QUANTITY
MAJOR DECIDUOUS TREES		
Ar	Acer rubrum 'Red Sunset'	4
Po	Platanus occidentalis	5
EVERGREEN TREES		
Ps	Pinus strobus	13
MINOR DECIDUOUS TREES		
Cc	Cercis canadensis	6
Mv	Magnolia virginiana	4
Vp	Viburnum prunifolium	9
SHRUBS		
Aa	Aronia arbutifolia 'Brilliantissima'	9
Vd	Viburnum dentatum	16
PLUGS		
Asl	Aster lateriflorus	435
Asn	Aster novae-angliae	190
Car	Carex typhina	435
Eup	Eupatorium dubium	570
Pan	Panicum virgatum	670
Sol	Solidago rugosa	265
OTHER		
LME	Lowland Meadow Establishment Area, SY	1132
UME	Upland Meadow Establishment Area, SY	2276
WME	Wet Meadow Establishment, SY	454

THOMAS A. DILL
TAX MAP 59 / PARCEL 133
LIBER WLB 2286 / FOLIO 288
PROJECT PARCEL 99



MATCH LINE STA 126+00 SHEET LS-03



See adjoining sheet
for quantity

Refer to CS-150 for Seeding and
Shrub planting in this area

US 301 CONSTRUCTION & R/W B
US 301 SB

DRAFT
NOT FOR BIDDING
AUGUST 2015

LANDSCAPE LEGEND

-  Major Deciduous Tree
-  Evergreen Trees
-  Minor Deciduous Tree
-  Shrubs
-  Maintenance Access Road
-  Wet Meadow Establishment Area
-  Upland Meadow Establishment Area
-  Lowland Meadow Establishment and Plug Planting Area

LANDSCAPE NOTES

Refer to Landscape Planting Schedule and Notes sheet for summary of quantities and planting notes.

All areas of disturbance within Maryland that are not indicated to receive a specific seed mixture as detailed on the Landscaping Plans, shall be seeded with SHA Turfgrass Seed Mix. The Permanent Seeding Summary table as shown on the Erosion Control Plan is the MDE Permanent Seeding minimum standard and has been provided for reference only.

All maintenance access roads shall be seeded with SHA Turfgrass Seed Mix.

LANDSCAPE PLANTING SCHEDULE		
NO.	PLANTING DESCRIPTION	QUANTITY
See adjoining sheet for planting schedule.		

ADDENDUMS / REVISIONS



**US 301
MARYLAND STATE LINE
TO LEVELS ROAD**

CONTRACT T200811301	BRIDGE NO.
COUNTY NEW CASTLE	DESIGNED BY: DMS
	CHECKED BY: AJC

LANDSCAPING PLAN

LS-04
SHEET NO. 651
TOTAL SHTS. 850



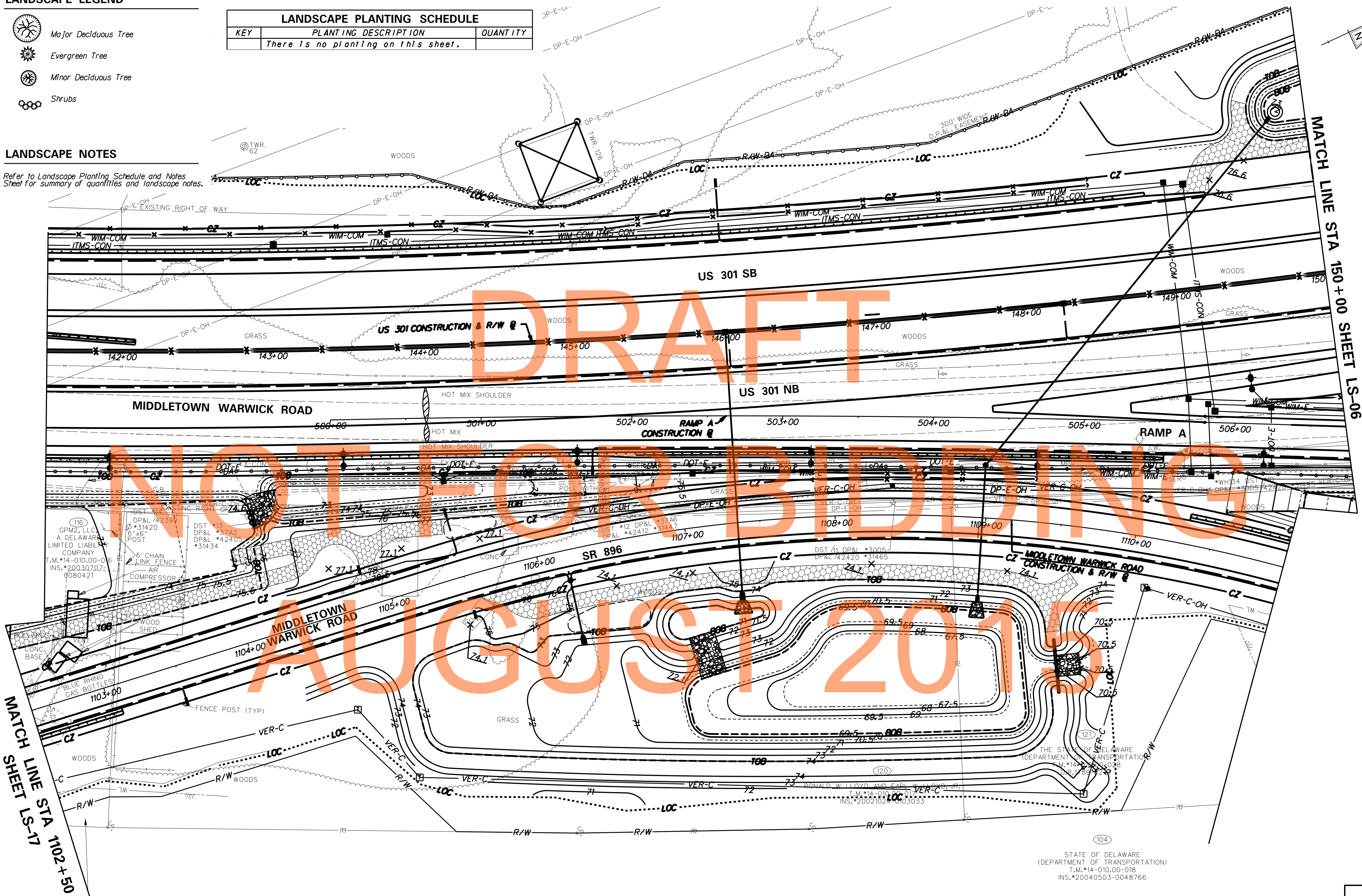
LANDSCAPE LEGEND

-  Major Deciduous Tree
-  Evergreen Tree
-  Minor Deciduous Tree
-  Shrubs

LANDSCAPE PLANTING SCHEDULE		
KEY	PLANTING DESCRIPTION	QUANTITY
	There is no planting on this sheet.	

LANDSCAPE NOTES

Refer to Landscape Planting Schedule and Notes Sheet for summary of quantities and landscape notes.



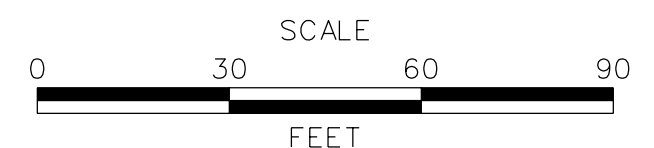
DRAFT
NOT FOR BIDDING
AUGUST 2015

MATCH LINE STA 1102+50
SHEET LS-17

MATCH LINE STA 150+00
SHEET LS-06



ADDENDUMS / REVISIONS	



**US 301
MARYLAND STATE LINE
TO LEVELS ROAD**

CONTRACT T20081301	BRIDGE NO.
COUNTY NEW CASTLE	DESIGNED BY: DMS CHECKED BY: AJC

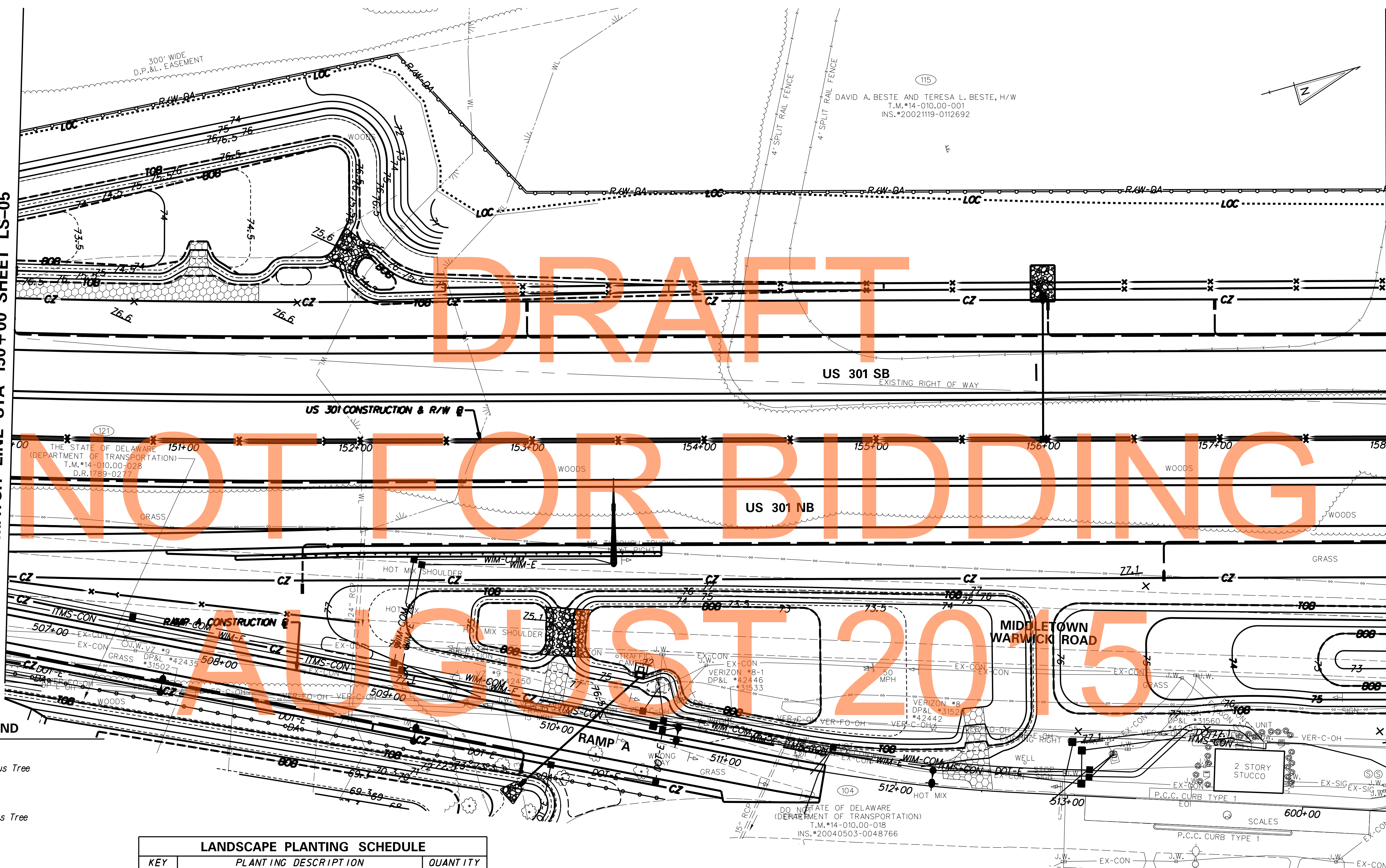
LANDSCAPE PLAN

LS-05	SHEET NO. 652
	TOTAL SHTS. 850

STATE OF DELAWARE
(DEPARTMENT OF TRANSPORTATION)
T.M.#14-010.00-018
INS.#20040503-0048766

MATCH LINE STA 150+00 SHEET LS-05





MATCH LINE STA 158+00 SHEET LS-07



DRAFT
NOT FOR BIDDING
AUGUST 2015

DAVID A. BESTE AND TERESA L. BESTE, H/W
T.M.#14-010.00-001
INS.#20021119-0112692

LANDSCAPE LEGEND

-  Major Deciduous Tree
-  Evergreen Tree
-  Minor Deciduous Tree
-  Shrubs

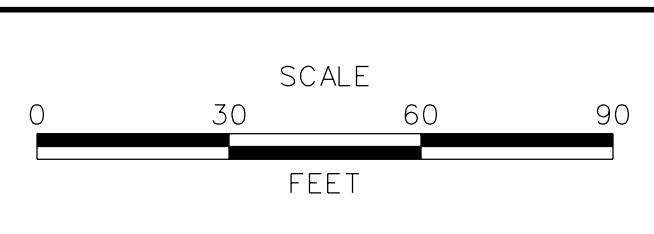
LANDSCAPE PLANTING SCHEDULE		
KEY	PLANTING DESCRIPTION	QUANTITY
	There is no planting on this sheet.	

LANDSCAPE NOTES

Refer to Landscape Planting Schedule and Notes Sheet for summary of quantities and landscape notes.



ADDENDUMS / REVISIONS	



**US 301
MARYLAND STATE LINE
TO LEVELS ROAD**

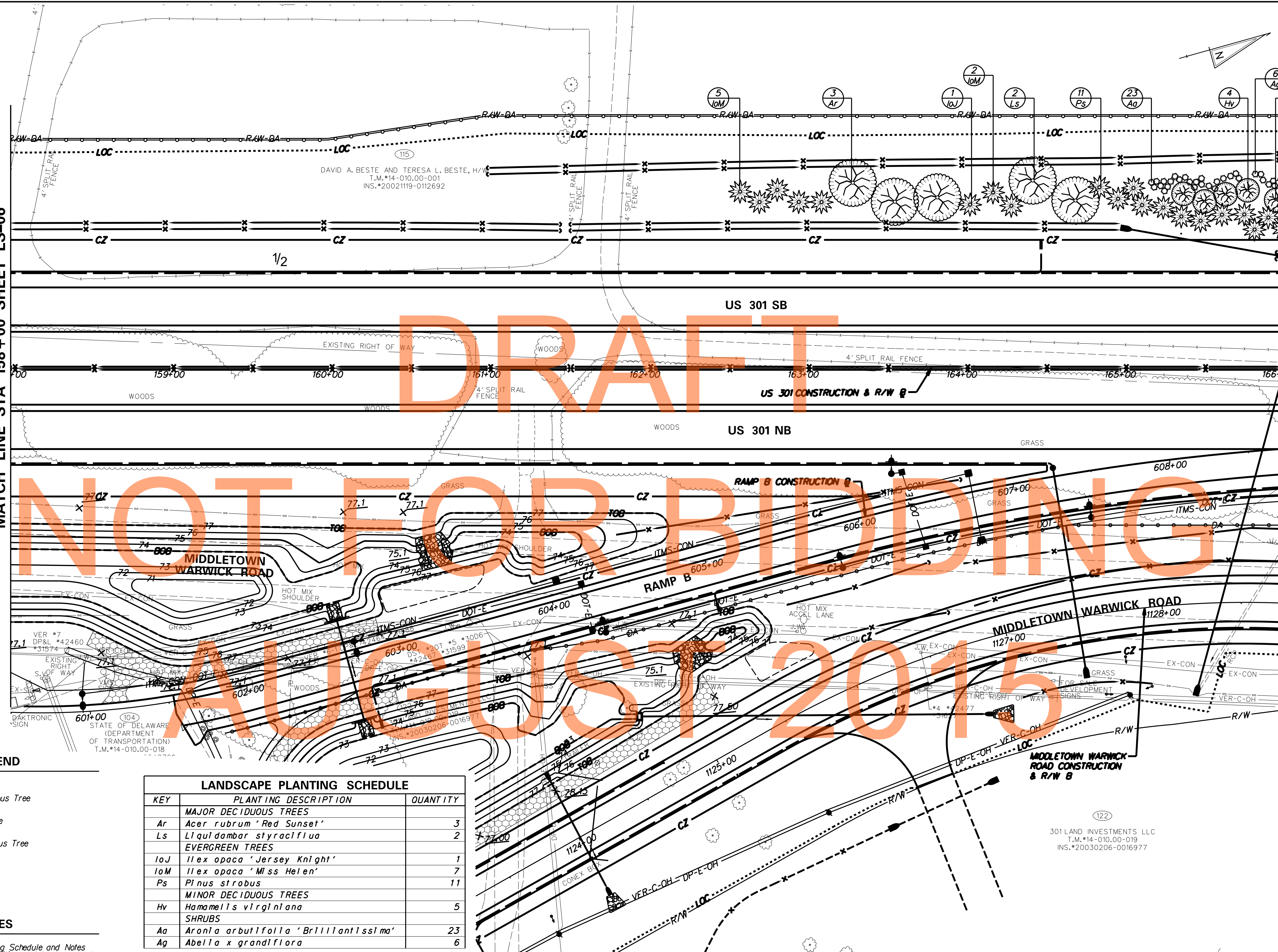
CONTRACT T200811301	BRIDGE NO.	
COUNTY NEW CASTLE	DESIGNED BY: DMS	CHECKED BY: AJC

LANDSCAPING PLAN

LS-06
SHEET NO. 653
TOTAL SHTS. 850

MATCH LINE STA 158+00 SHEET LS-06

MATCH LINE STA 166+00 SHEET LS-08



DAVID A. BESTE AND TERESA L. BESTE, H/W
T.M.#14-010.00-001
INS.#20021119-0112692

STATE OF DELAWARE
(DEPARTMENT OF TRANSPORTATION)
T.M.#14-010.00-018

301 LAND INVESTMENTS LLC
T.M.#14-010.00-019
INS.#20030206-0016977

LANDSCAPE LEGEND

- Major Deciduous Tree
- Evergreen Tree
- Minor Deciduous Tree
- Shrubs

KEY	PLANTING DESCRIPTION	QUANTITY
MAJOR DECIDUOUS TREES		
Ar	<i>Acer rubrum</i> 'Red Sunset'	3
Ls	<i>Liquidambar styraciflua</i>	2
EVERGREEN TREES		
IoJ	<i>Ilex opaca</i> 'Jersey Knight'	1
IoM	<i>Ilex opaca</i> 'Miss Helen'	7
Ps	<i>Pinus strobus</i>	11
MINOR DECIDUOUS TREES		
Hv	<i>Hamamelis virginiana</i>	5
SHRUBS		
Aa	<i>Aronia arbutifolia</i> 'Brilliantissima'	23
Ag	<i>Abelia x grandiflora</i>	6

LANDSCAPE NOTES

Refer to Landscape Planting Schedule and Notes Sheet for summary of quantities and landscape notes.

ADDENDUMS / REVISIONS



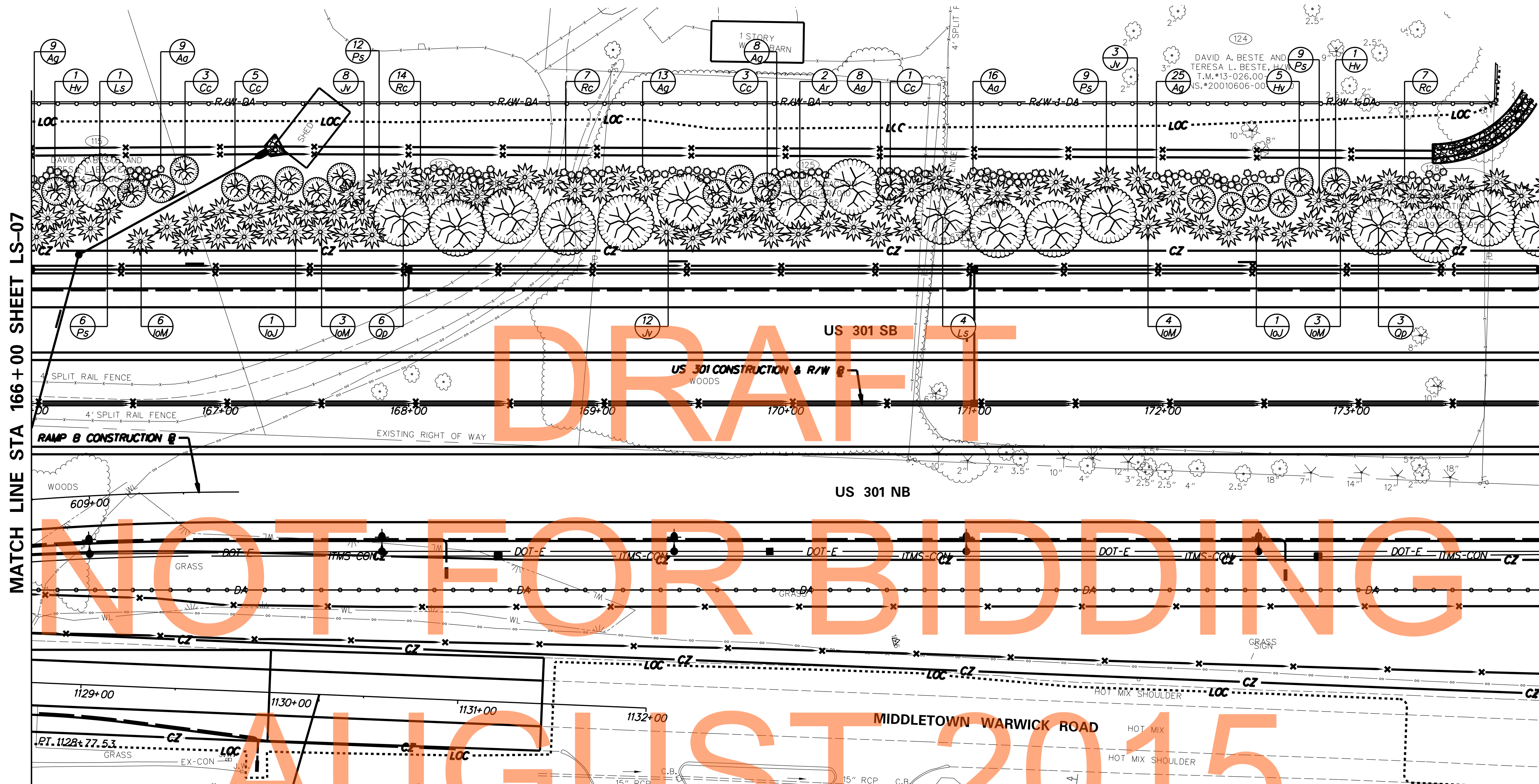
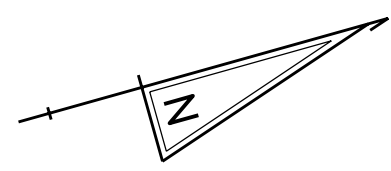
**US 301
MARYLAND STATE LINE
TO LEVELS ROAD**

CONTRACT T200811301	BRIDGE NO.
COUNTY NEW CASTLE	DESIGNED BY: DMS
	CHECKED BY: AJC

LANDSCAPING PLAN

LS-07	SHEET NO. 654
	TOTAL SHTS. 850





MATCH LINE STA 166+00 SHEET LS-07

MATCH LINE STA 174+00 SHEET LS-09

NOT FOR BIDDING

LANDSCAPE PLANTING SCHEDULE

KEY	PLANTING DESCRIPTION	QUANTITY
MAJOR DECIDUOUS TREES		
Ar	<i>Acer rubrum</i> 'Red Sunset'	2
Ls	<i>Liquidambar styraciflua</i>	5
Op	<i>Quercus palustris</i>	9
EVERGREEN TREES		
IoJ	<i>Ilex opaca</i> 'Jersey Knight'	2
IoM	<i>Ilex opaca</i> 'Miss Helen'	16
Jv	<i>Juniperus virginiana</i>	23
Ps	<i>Pinus strobus</i>	36
MINOR DECIDUOUS TREES		
Cc	<i>Cercis canadensis</i>	12
Hv	<i>Hamamelis virginiana</i>	7
SHRUBS		
Aa	<i>Aronia arbutifolia</i> 'Brilliantissima'	33
Ag	<i>Abelia x grandiflora</i>	55
Rc	<i>Rhus copallina</i>	28

LANDSCAPE LEGEND

- Major Deciduous Tree
- Evergreen Tree
- Minor Deciduous Tree
- Shrubs

LANDSCAPE NOTES

Refer to Landscape Planting Schedule and Notes Sheet for summary of quantities and landscape notes.



ADDENDUMS / REVISIONS	

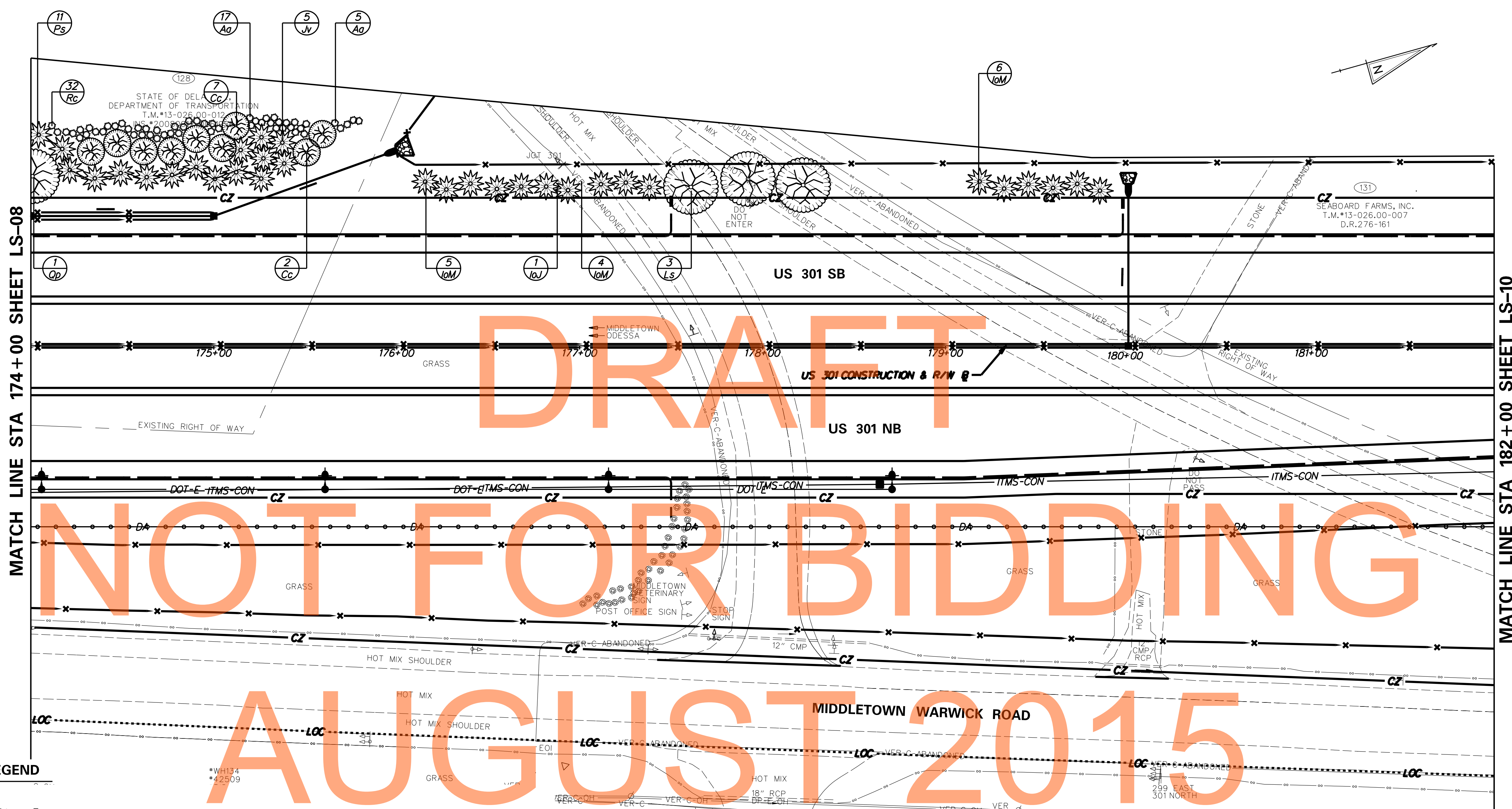


**US 301
MARYLAND STATE LINE
TO LEVELS ROAD**

CONTRACT T20081301	BRIDGE NO.
COUNTY NEW CASTLE	DESIGNED BY: DMS
	CHECKED BY: AJC

LANDSCAPING PLAN

LS-08
SHEET NO. 655
TOTAL SHTS. 850



MATCH LINE STA 174+00 SHEET LS-08

MATCH LINE STA 182+00 SHEET LS-10

DRAFT
NOT FOR BIDDING
AUGUST 2015

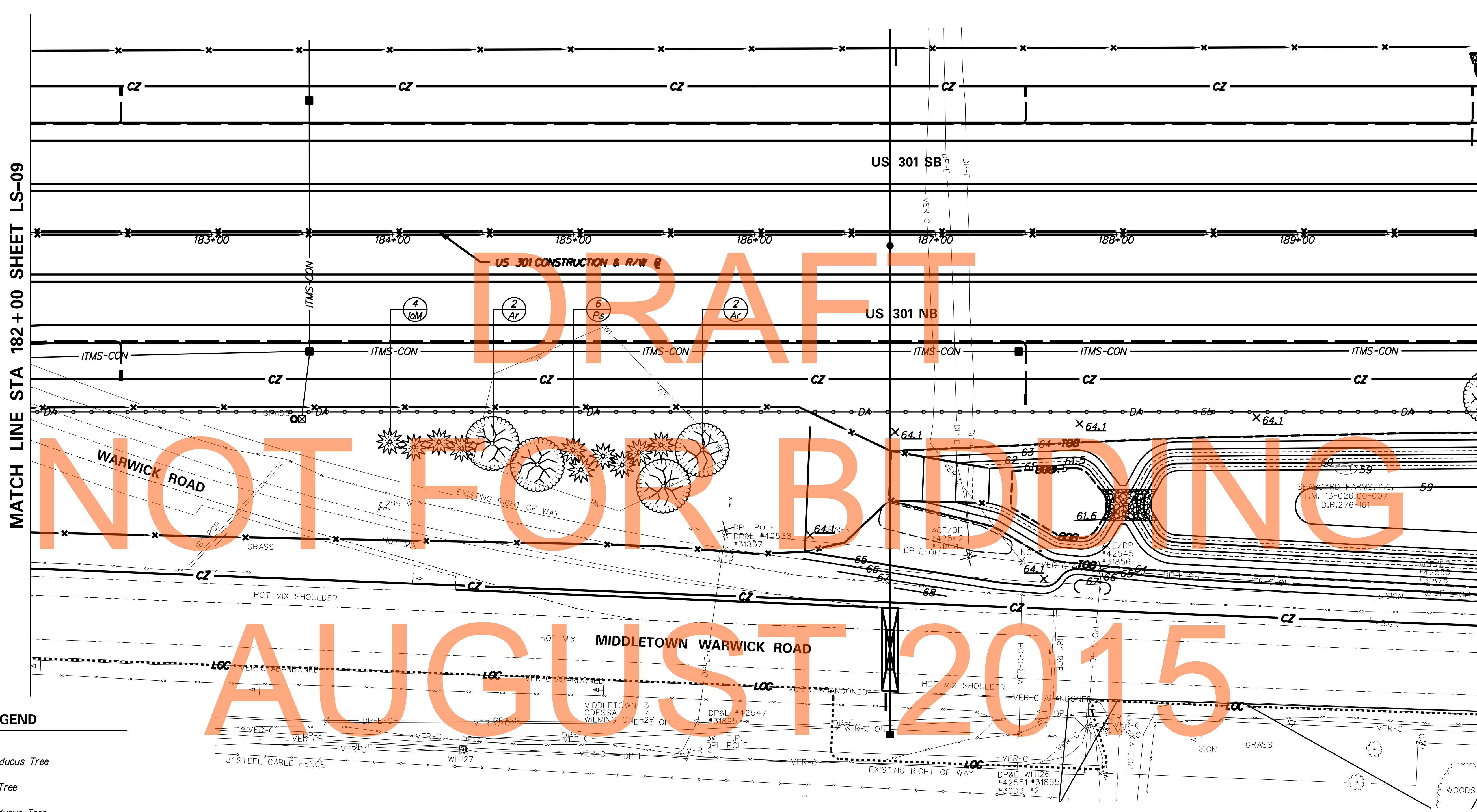
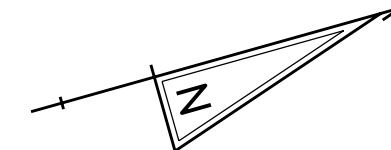
LANDSCAPE LEGEND

- Major Deciduous Tree
- Evergreen Tree
- Minor Deciduous Tree
- Shrubs

LANDSCAPE NOTES

Refer to Landscape Planting Schedule and Notes Sheet for summary of quantities and landscape notes.

LANDSCAPE PLANTING SCHEDULE		
KEY	PLANTING DESCRIPTION	QUANTITY
MAJOR DECIDUOUS TREES		
Ls	<i>Liquidambar styraciflua</i>	3
Op	<i>Quercus palustris</i>	1
EVERGREEN TREES		
IoJ	<i>Ilex opaca 'Jersey Knight'</i>	1
IoM	<i>Ilex opaca 'Miss Helen'</i>	15
Jv	<i>Juniperus virginiana</i>	5
Ps	<i>Pinus strobus</i>	11
MINOR DECIDUOUS TREES		
Cc	<i>Cercis canadensis</i>	9
SHRUBS		
Aa	<i>Aronia arbutifolia 'Brilliantissima'</i>	22
Rc	<i>Rhus copallina</i>	32



MATCH LINE STA 182+00 SHEET LS-09

MATCH LINE STA 190+00 SHEET LS-11

DRAFT
NOT FOR BIDDING
AUGUST 2015

LANDSCAPE LEGEND

- Major Deciduous Tree
- Evergreen Tree
- Minor Deciduous Tree
- Shrubs

LANDSCAPE PLANTING SCHEDULE

KEY	PLANTING DESCRIPTION	QUANTITY
	MAJOR DECIDUOUS TREES	
Ar	<i>Acer rubrum</i> 'Red Sunset'	4
	EVERGREEN TREES	
IoM	<i>Ilex opaca</i> 'Miss Helen'	4
Ps	<i>Pinus strobus</i>	6

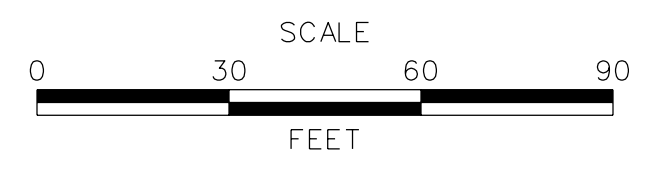
LANDSCAPE NOTES

Refer to Landscape Planting Schedule and Notes Sheet for summary of quantities and landscape notes.

Planting from approximately sta. 184+00 to sta. 186+00 right is to provide visual mitigation for the B.F. Hanson historic site.



ADDENDUMS / REVISIONS	

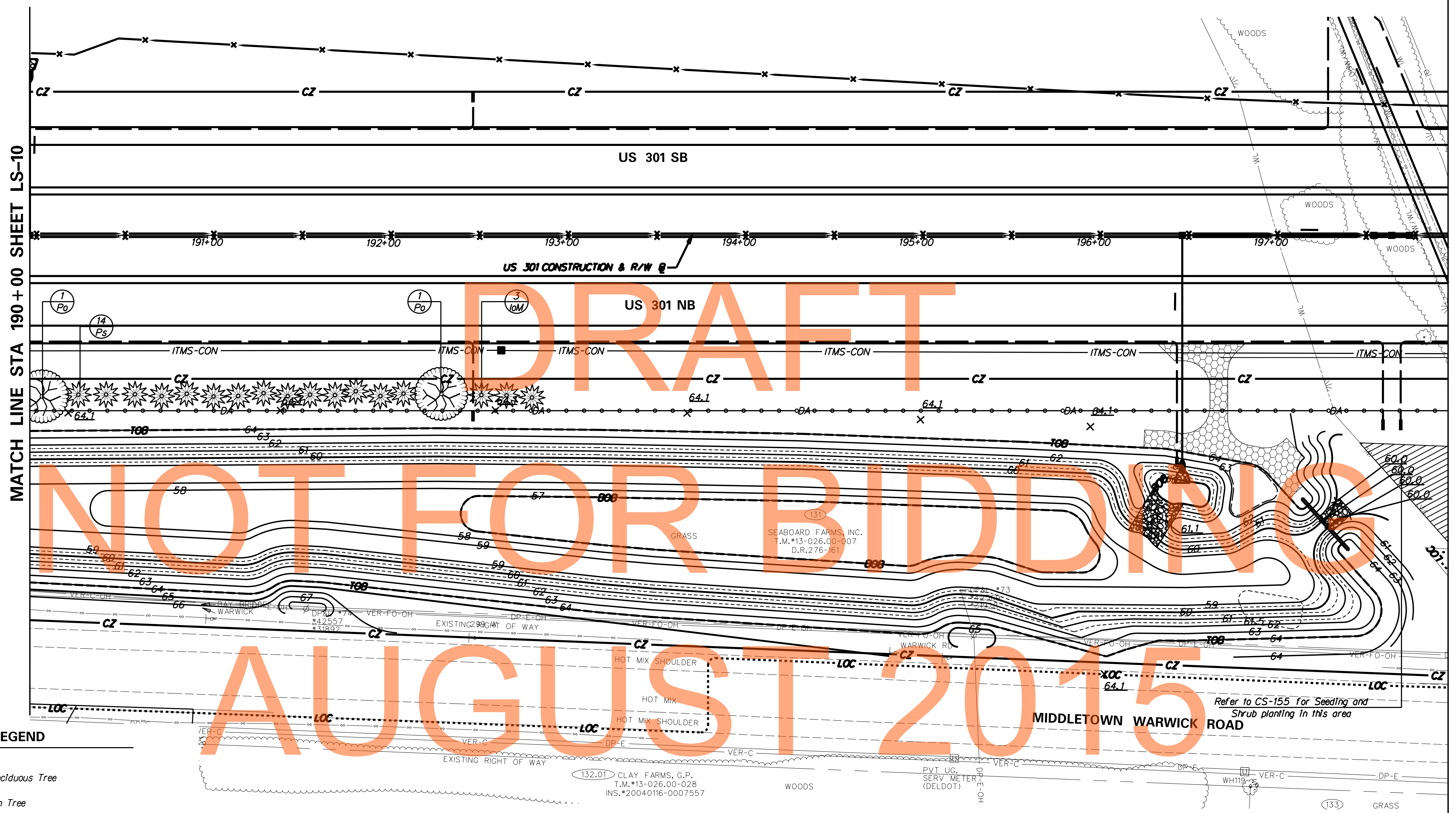
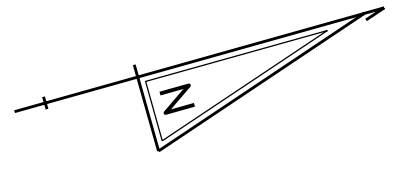


**US 301
MARYLAND STATE LINE
TO LEVELS ROAD**

CONTRACT T200811301	BRIDGE NO.	
COUNTY NEW CASTLE	DESIGNED BY: DMS	CHECKED BY: AJC

LANDSCAPING PLAN

LS-10
SHEET NO. 657
TOTAL SHTS. 850



MATCH LINE STA 190+00 SHEET LS-10

MATCH LINE STA 198+00 SHEET LS-12

DRAFT
NOT FOR BIDDING
AUGUST 2015

LANDSCAPE LEGEND

- Major Deciduous Tree
- Evergreen Tree
- Minor Deciduous Tree
- Shrubs
- Seeding and Shrub Planting

LANDSCAPE PLANTING SCHEDULE		
KEY	PLANTING DESCRIPTION	QUANTITY
	MAJOR DECIDUOUS TREES	
Po	<i>Platanus occidentalis</i>	2
	EVERGREEN TREES	
IoM	<i>Ilex opaca 'Miss Helen'</i>	3
Ps	<i>Pinus strobus</i>	14

LANDSCAPE NOTES

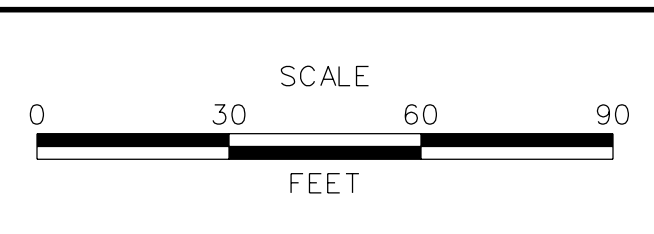
Refer to Landscape Planting Schedule and Notes Sheet for summary of quantities and landscape notes.

Planting from approximately sta. 190+00 to sta. 192+00 right, is to provide visual mitigation for the B.F. Hanson historic site.

Refer to CS-155 for Seeding and Shrub planting in this area



ADDENDUMS / REVISIONS	



**US 301
MARYLAND STATE LINE
TO LEVELS ROAD**

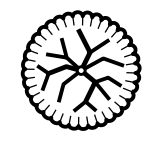



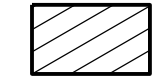
CONTRACT T200811301	BRIDGE NO.	
COUNTY NEW CASTLE	DESIGNED BY: DMS	
	CHECKED BY: AJC	

LANDSCAPING PLAN

SHEET NO. 658
TOTAL SHTS. 850

LS-11

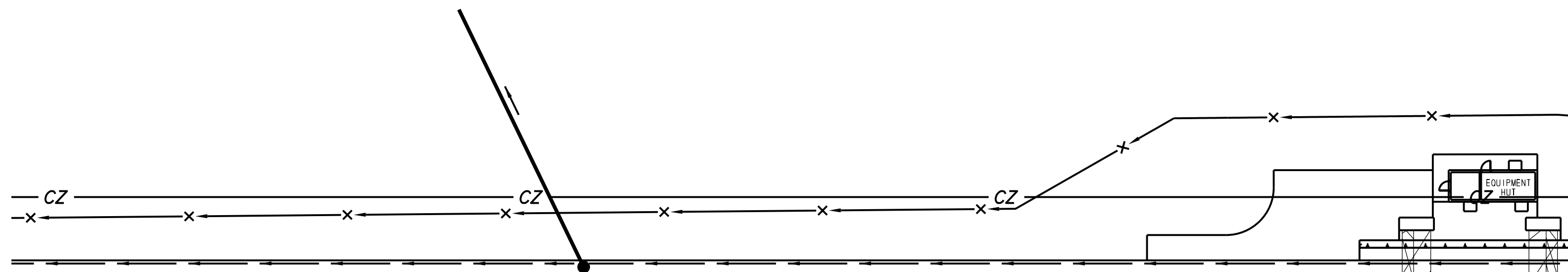
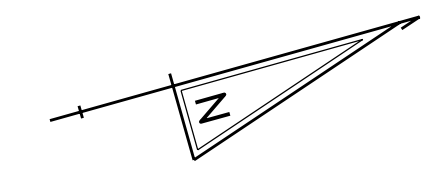
LANDSCAPE LEGEND

-  Major Deciduous Tree
-  Evergreen Tree
-  Minor Deciduous Tree
-  Shrubs
-  Seeding and Shrub Planting

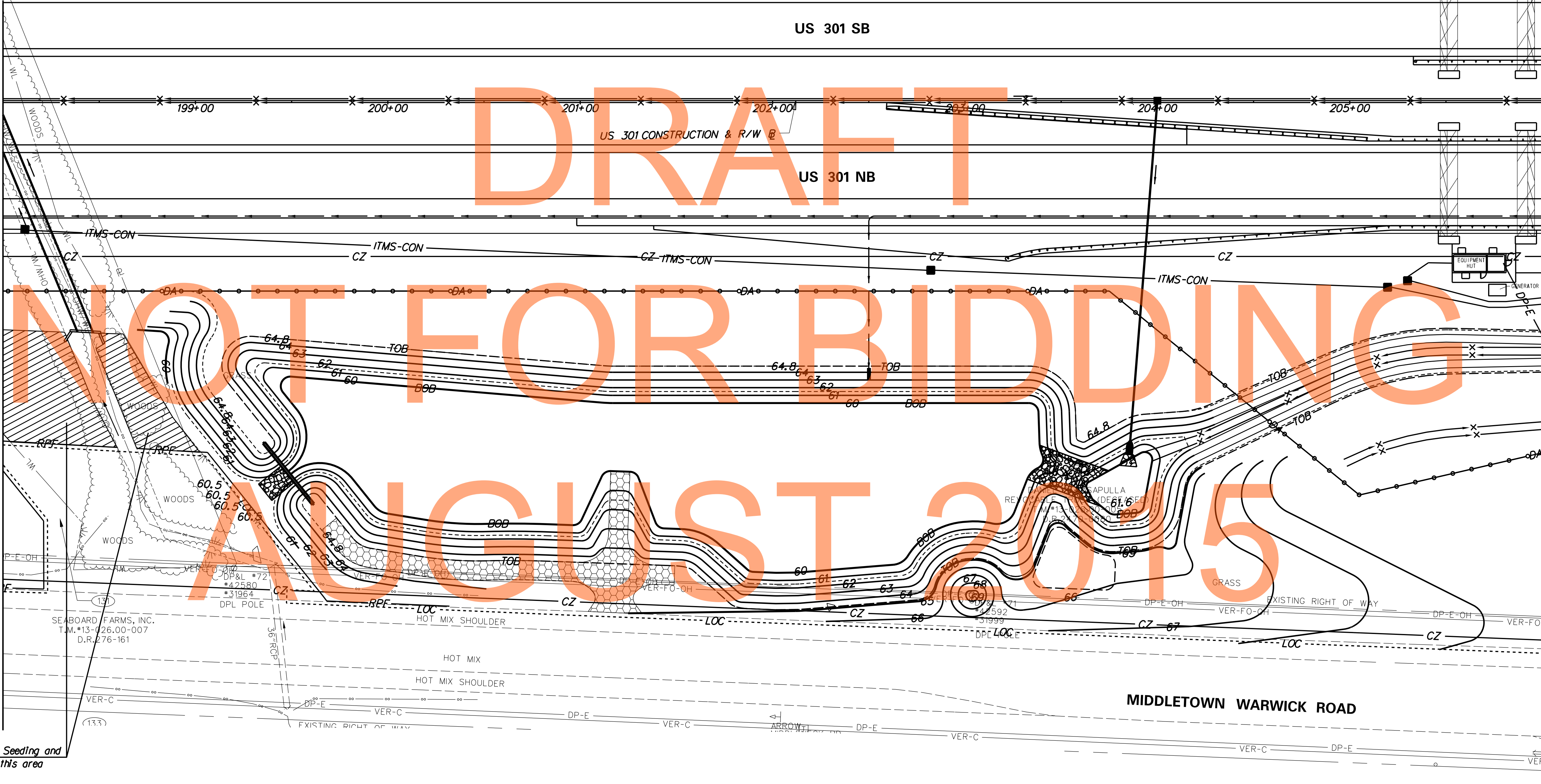
LANDSCAPE PLANTING SCHEDULE		
KEY	PLANTING DESCRIPTION	QUANTITY
	See sheet CS-155 for Seeding and Shrub planting	

LANDSCAPE NOTES

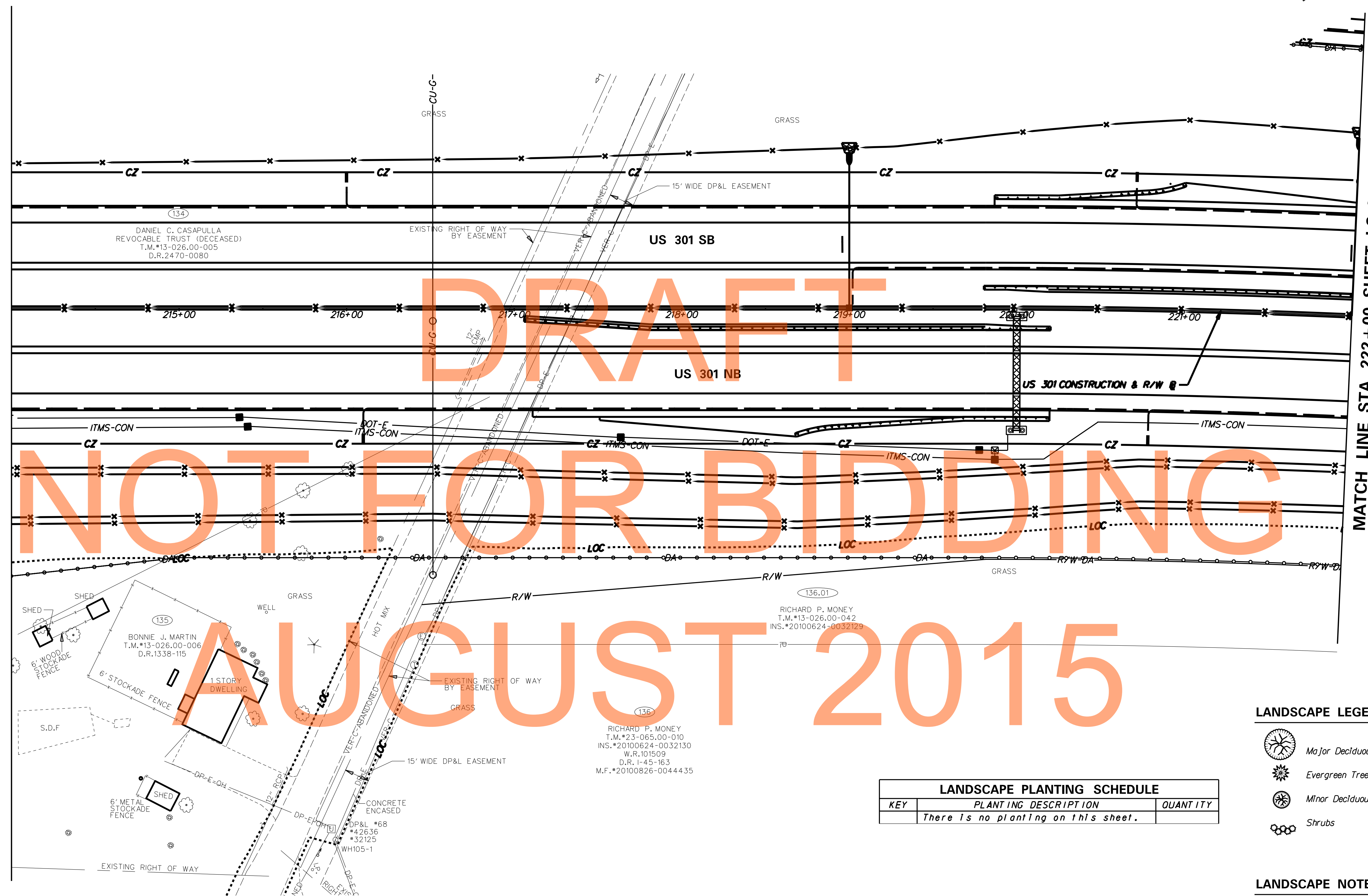
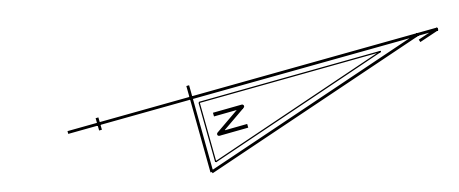
Refer to Landscape Planting Schedule and Notes Sheet for summary of quantities and landscape notes.



MATCH LINE STA 198+00 SHEET LS-11



Refer to CS-155 for Seeding and Shrub planting in this area

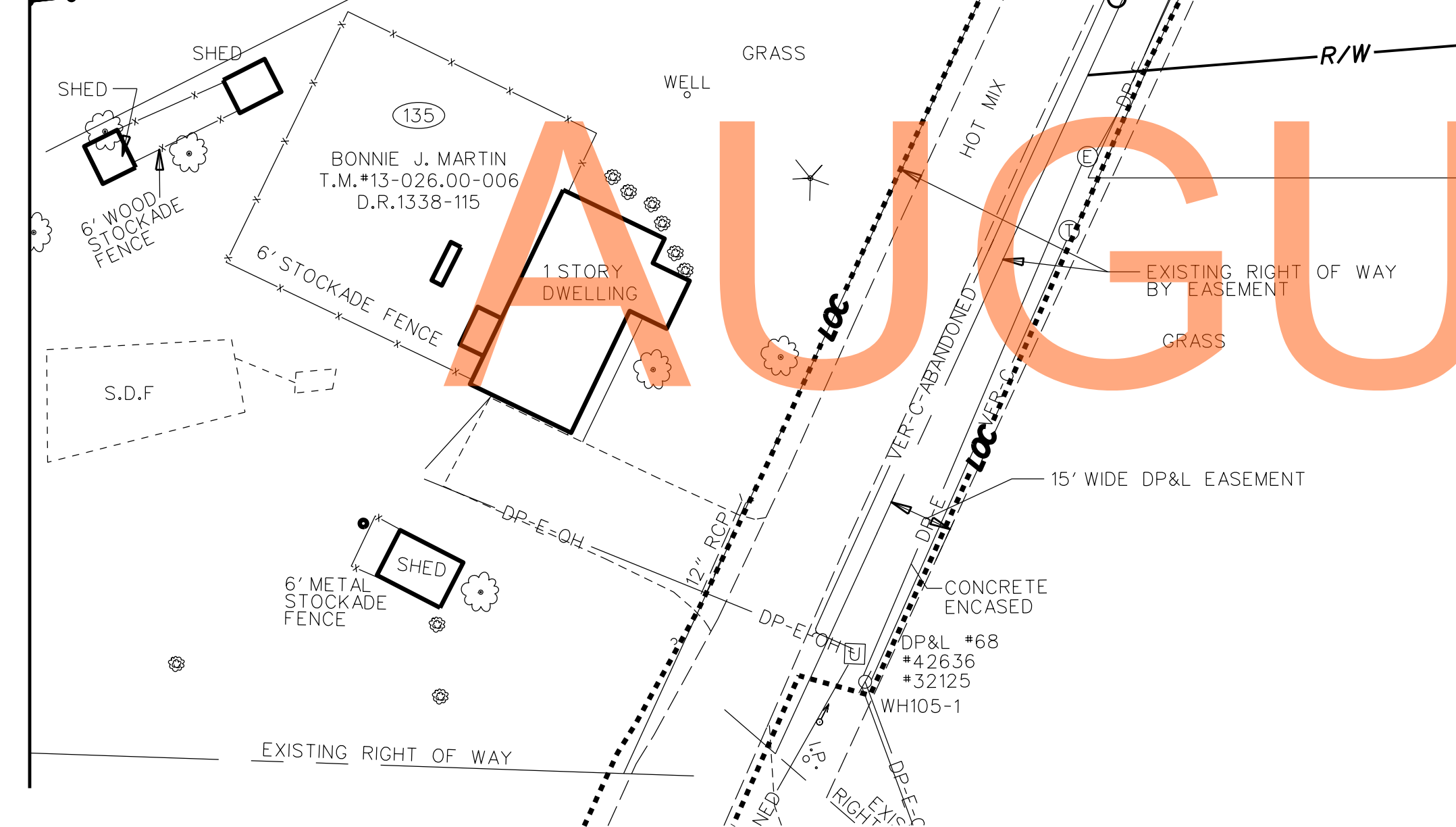


MATCH LINE STA 222+00 SHEET LS-14

NOT FOR BIDDING

DRAFT

AUGUST 2015



136.01
 RICHARD P. MONEY
 T.M.#13-026.00-042
 INS.#20100624-0032129

136
 RICHARD P. MONEY
 T.M.#23-065.00-010
 INS.#20100624-0032130
 W.R.101509
 D.R.1-45-163
 M.F.#20100826-0044435

LANDSCAPE LEGEND

- Major Deciduous Tree
- Evergreen Tree
- Minor Deciduous Tree
- Shrubs

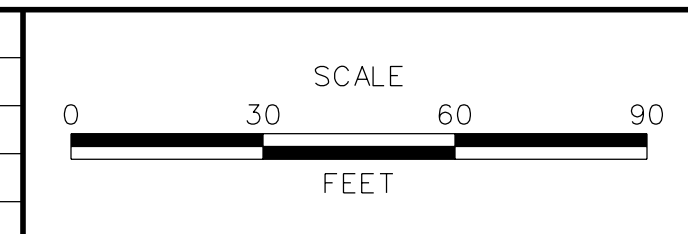
LANDSCAPE PLANTING SCHEDULE		
KEY	PLANTING DESCRIPTION	QUANTITY
There is no planting on this sheet.		

LANDSCAPE NOTES

Refer to Landscape Planting Schedule and Notes Sheet for summary of quantities and landscape notes.



ADDENDUMS / REVISIONS

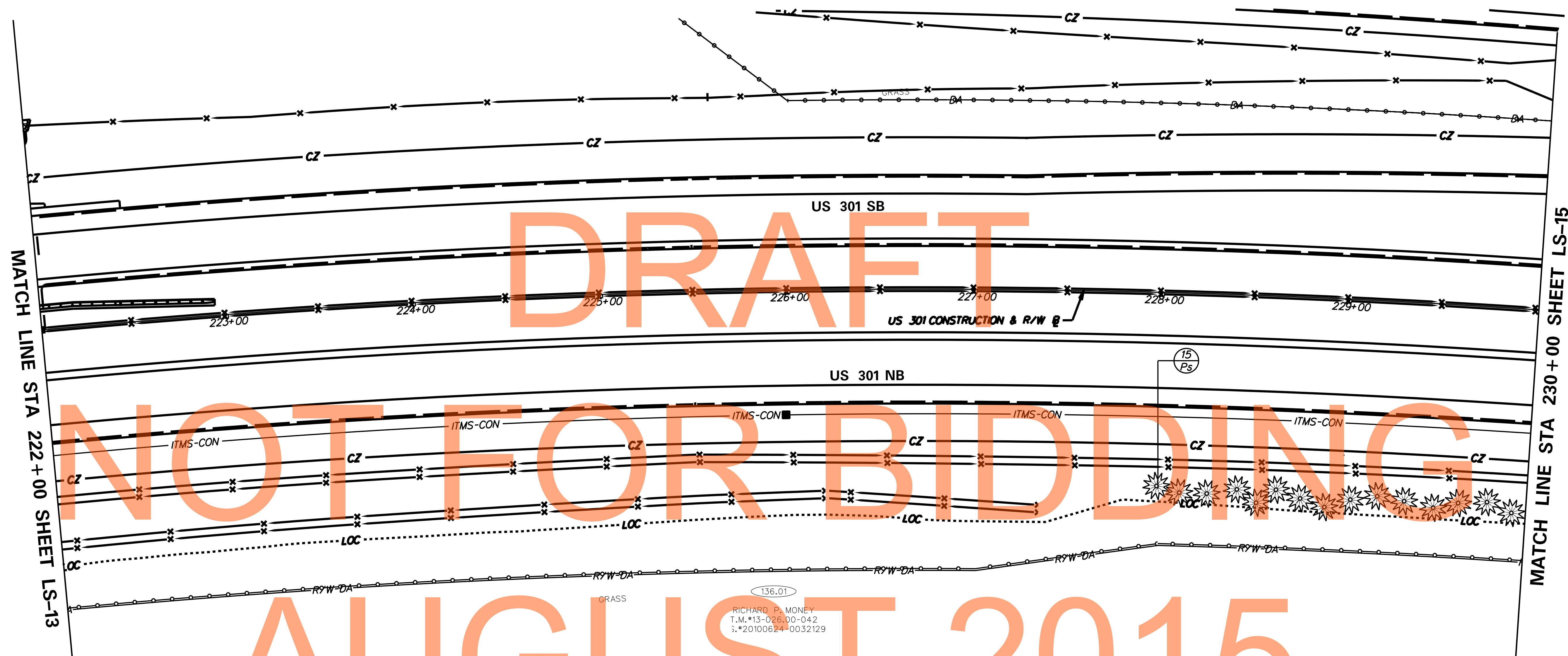
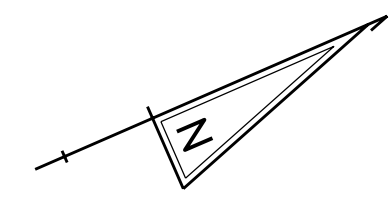


**US 301
 MARYLAND STATE LINE
 TO LEVELS ROAD**

CONTRACT T200811301	BRIDGE NO.
COUNTY NEW CASTLE	DESIGNED BY: DMS CHECKED BY: AJC

LANDSCAPING PLAN

LS-13
SHEET NO. 660
TOTAL SHTS. 850



DRAFT
NOT FOR BIDDING
AUGUST 2015

LANDSCAPE LEGEND

- Major Deciduous Tree
- Evergreen Tree
- Minor Deciduous Tree
- Shrubs

LANDSCAPE PLANTING SCHEDULE

KEY	PLANTING DESCRIPTION	QUANTITY
	EVERGREEN TREES	
Ps	<i>Pinus strobus</i>	15

136.01
 RICHARD P. MONEY
 T.M.#13-026.00-042
 I.S.#20100624-0032129
 W.R.101509
 D.R.1-45-163
 M.F.#20100826-0044435
 136
 RICHARD P. MONEY
 T.M.#23-065.00-010
 I.S.#20100624-0032130
 W.R.101509
 D.R.1-45-163
 M.F.#20100826-0044435

LANDSCAPE NOTES

Refer to Landscape Planting Schedule and Notes Sheet for summary of quantities and landscape notes.

Planting from approximately sta. 228+00 to sta. 230+00 right, 1s to provide visual mitigation for the C. Polk historic site.



ADDENDUMS / REVISIONS

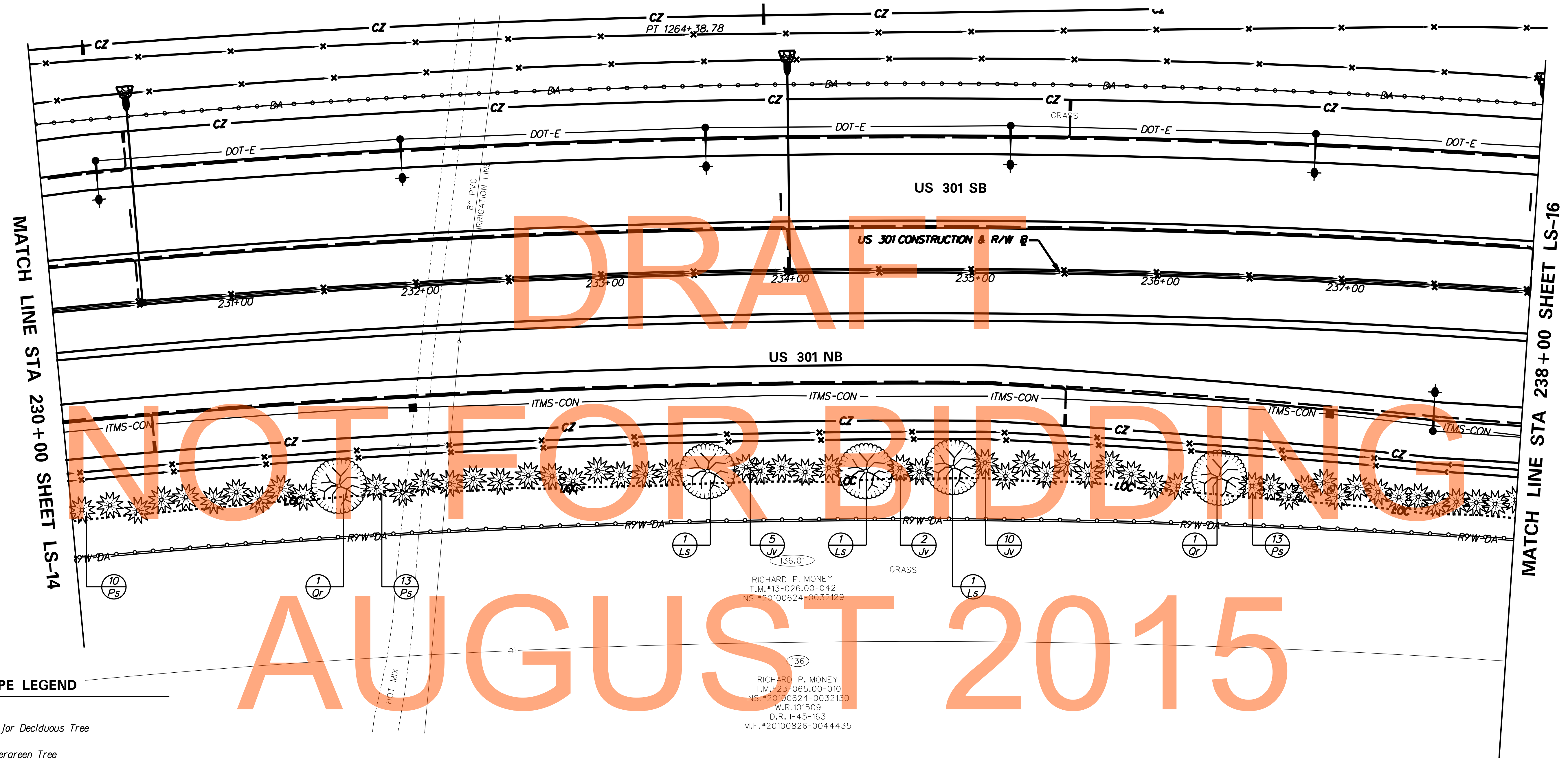
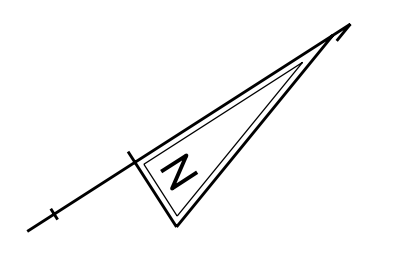


**US 301
MARYLAND STATE LINE
TO LEVELS ROAD**

CONTRACT T200811301	BRIDGE NO.
COUNTY NEW CASTLE	DESIGNED BY: DMS
	CHECKED BY: AJC

LANDSCAPING PLAN

LS-14
SHEET NO. 661
TOTAL SHTS. 850



MATCH LINE STA 230+00 SHEET LS-14

MATCH LINE STA 238+00 SHEET LS-16

DRAFT

NOT FOR BIDDING

AUGUST 2015

RICHARD P. MONEY
T.M.#13-026.00-042
INS.#20100624-0032129

RICHARD P. MONEY
T.M.#23-065.00-010
INS.#20100624-0032130
W.R.101509
D.R.1-45-163
M.F.#20100826-0044435

LANDSCAPE LEGEND

- Major Deciduous Tree
- Evergreen Tree
- Minor Deciduous Tree
- Shrubs

LANDSCAPE PLANTING SCHEDULE		
KEY	PLANTING DESCRIPTION	QUANTITY
MAJOR DECIDUOUS TREES		
Ls	<i>Liquidambar styraciflua</i>	3
Or	<i>Quercus rubra</i>	2
EVERGREEN TREES		
Jv	<i>Juniperus virginiana</i>	17
Ps	<i>Pinus strobus</i>	36

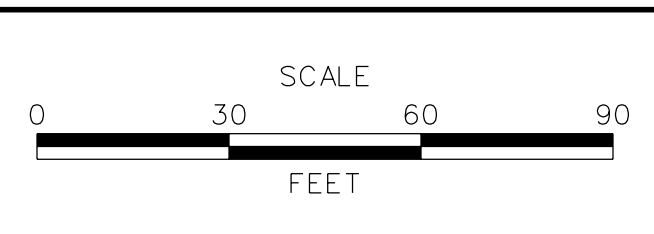
LANDSCAPE NOTES

Refer to Landscape Planting Schedule and Notes Sheet for summary of quantities and landscape notes.

Planting from approximately sta. 230+00 to sta. 238+00 right, is to provide visual mitigation for the C. Polk historic site.



ADDENDUMS / REVISIONS	



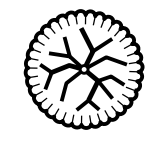



**US 301
MARYLAND STATE LINE
TO LEVELS ROAD**

CONTRACT T200811301	BRIDGE NO.	
COUNTY NEW CASTLE	DESIGNED BY: DMS	CHECKED BY: AJC

LANDSCAPING PLAN

LS-15
SHEET NO. 662
TOTAL SHTS. 850

LANDSCAPE LEGEND

-  Major Deciduous Tree
-  Evergreen Tree
-  Minor Deciduous Tree
-  Shrubs

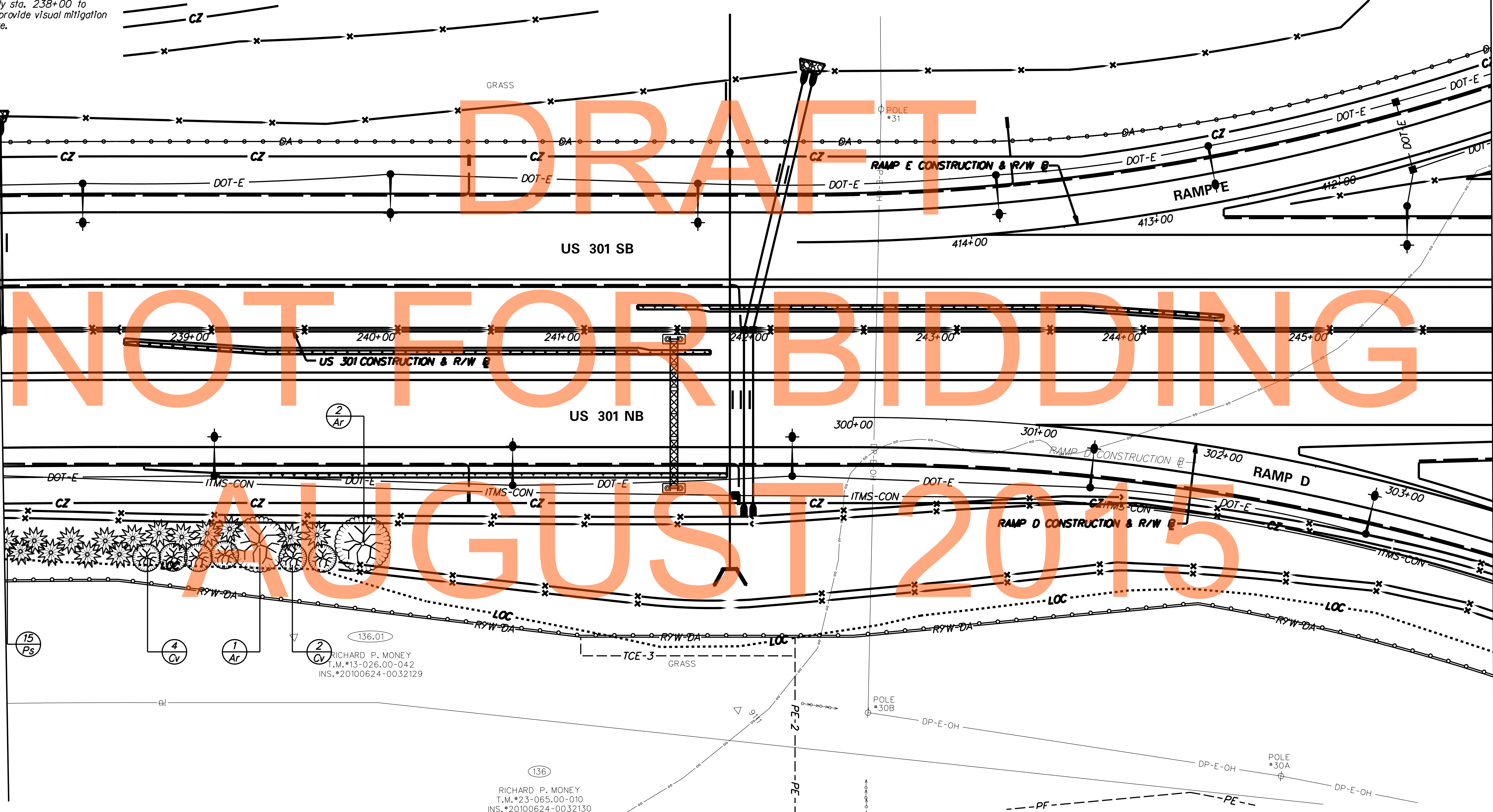
LANDSCAPE PLANTING SCHEDULE		
KEY	PLANTING DESCRIPTION	QUANTITY
MAJOR DECIDUOUS TREES		
Ar	Acer rubrum 'Red Sunset'	3
EVERGREEN TREES		
Ps	Pinus strobus	15
MINOR DECIDUOUS TREES		
Cv	Crataegus viridis 'Winter King'	6

LANDSCAPE NOTES

Refer to Landscape Planting Schedule and Notes Sheet for summary of quantities and landscape notes.

Planting from approximately sta. 238+00 to sta. 240+00 right, is to provide visual mitigation for the C. Polk historic site.

MATCH LINE STA 238+00 SHEET LS-15



DRAFT
NOT FOR BIDDING
AUGUST 2015

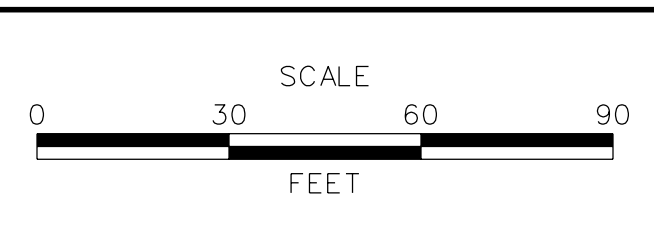
136.01
RICHARD P. MONEY
T.M.#13-026.00-042
INS.#20100624-0032129

136
RICHARD P. MONEY
T.M.#23-065.00-010
INS.#20100624-0032130

LS-16



ADDENDUMS / REVISIONS



**US 301
MARYLAND STATE LINE
TO LEVELS ROAD**

CONTRACT T20081301	BRIDGE NO.
COUNTY NEW CASTLE	DESIGNED BY: DMS CHECKED BY: AJC

LANDSCAPING PLAN	SHEET NO. 663
	TOTAL SHTS. 850

LANDSCAPE PLANTING SCHEDULE		
KEY	PLANTING DESCRIPTION	QUANTITY
MAJOR DECIDUOUS TREES		
Ar	<i>Acer rubrum</i> 'Red Sunset'	3
EVERGREEN TREES		
IoM	<i>Ilex opaca</i> 'Miss Helen'	5
Ps	<i>Pinus strobus</i>	4
MINOR DECIDUOUS TREES		
Cc	<i>Cercis canadensis</i>	9

LANDSCAPE LEGEND

-  Major Deciduous Tree
-  Evergreen Tree
-  Minor Deciduous Tree
-  Shrubs

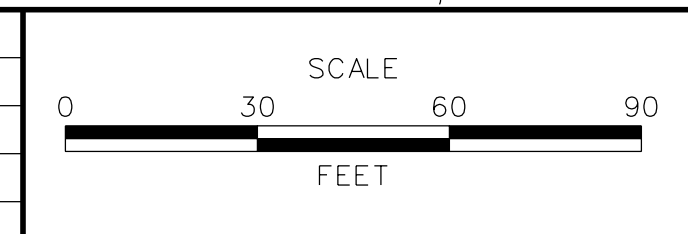
LANDSCAPE NOTES

Refer to Landscape Planting Schedule and Notes Sheet for summary of quantities and landscape notes.



DRAFT
NOT FOR BIDDING
AUGUST 2015

ADDENDUMS / REVISIONS



CONTRACT T20081301	BRIDGE NO.
COUNTY NEW CASTLE	DESIGNED BY: DMS
	CHECKED BY: AJC

SHEET NO.	664
TOTAL SHTS.	850

LS-17

MASTER LANDSCAPE PLANTING SCHEDULE					
QTY	KEY	BOTANICAL NAME	COMMON NAME	SIZE AND ROOT CONDITION	COMMENTS
		MAJOR DECIDUOUS TREES			
33	Ar	<i>Acer rubrum 'Red Sunset'</i>	Red Sunset Maple	3" Calliper, B&B	Space approx. 40' OC
13	Ls	<i>Liquidambar styraciflua</i>	Sweet-gum	2" Calliper, B&B	Space approx. 40' OC
16	Po	<i>Platanus occidentalis</i>	Sycamore	3" Calliper, B&B	Space approx. 40' OC
10	Op	<i>Quercus palustris</i>	Pin Oak	2" Calliper, B&B	Space approx. 40' OC
2	Or	<i>Quercus rubra</i>	Red Oak	2" Calliper, B&B	Space approx. 40' OC
		EVERGREEN TREES			
4	IoJ	<i>Ilex opaca 'Jersey Knight'</i>	American Holly (Male Pollinator)	6' Height, B&B	Space approx. 15' OC
50	IoM	<i>Ilex opaca 'Miss Helen'</i>	American Holly	6' Height, B&B	Space approx. 15' OC
58	Jv	<i>Juniperus virginiana</i>	Eastern Redcedar	6' Height, B&B	Space approx. 15' OC
170	Ps	<i>Pinus strobus</i>	Eastern White Pine	6' Height, B&B	Space approx. 15' OC
		MINOR DECIDUOUS TREES			
39	Cc	<i>Cercis canadensis</i>	Eastern Redbud	2" Calliper, B&B	Space approx. 15' OC
6	Cv	<i>Crataegus viridis 'Winter King'</i>	Winter King Hawthorn	5' Height, B&B	Space approx. 15' OC
12	Hv	<i>Hamamelis virginiana</i>	Common Witchhazel	5' Height, B&B	Space approx. 15' OC
11	Mv	<i>Magnolia virginiana</i>	Sweetbay Magnolia	5' Height, B&B	Space approx. 15' OC
18	Vp	<i>Viburnum prunifolium</i>	Black-haw	5' Height, B&B	Space approx. 15' OC
		SHRUBS			
109	Aa	<i>Aronia arbutifolia 'Brilliantissima'</i>	Brilliant Red Chokeberry	24" Height, CG	Space 4' OC
61	Ag	<i>Abelia x grandiflora</i>	Glossy abelia	24" Height, CG	Space 4' OC
7	ivS	<i>Ilex verticillata 'Southern Gentleman'</i>	Southern Gentleman Winterberry	24" Height, CG	Space 4' OC
36	ivW	<i>Ilex verticillata 'Winter Red'</i>	Winter Red Winterberry	24" Height, CG	Space 4' OC
60	Rc	<i>Rhus copallina</i>	Flameleaf Sumac	24" Height, CG	Space 4' OC
47	Vd	<i>Viburnum dentatum</i>	Arrowwood Viburnum	24" Height, CG	Space 4' OC
		WETLAND RESTORATION PLANTS			
44		<i>Alnus serrulata</i>	Smooth Alder	3' Height, CG	Space 104' OC
44		<i>Viburnum dentatum</i>	Arrowwood Viburnum	3' Height, CG	Space 10' OC
		PLUGS			
1425	Asl	<i>Aster lateriflorus</i>	Callco Aster	2.25" x 2.25" Plug	Space 2' OC, 5" Deep
1290	Asn	<i>Aster novae-angliae</i>	New England Aster	2.25" x 2.25" Plug	Space 2' OC, 5" Deep
1065	Car	<i>Carex typhina</i>	Cat-Tail Sedge	2.25" x 2.25" Plug	Space 2' OC, 5" Deep
1660	Eup	<i>Eupatorium dubium</i>	Joe-Pye Weed	2.25" x 2.25" Plug	Space 2' OC, 5" Deep
2310	Pan	<i>Panicum virgatum</i>	Switchgrass	2.25" x 2.25" Plug	Space 2' OC, 5" Deep
785	Sol	<i>Solidago rugosa</i>	Wrinkle leaf Goldenrod	2.25" x 2.25" Plug	Space 2' OC, 5" Deep
800	Sos	<i>Solidago sempervirens</i>	Seaside Goldenrod	2.25" x 2.25" Plug	Space 2' OC, 5" Deep
		OTHER			
3890	LME	Square Yards of Lowland Meadow Est.			
5226	UME	Square Yards of Upland Meadow Est.			
454	WME	Square Yards of Wet Meadow Est.			

CG = Container Grown
OC = On Center

LANDSCAPE PLANTING NOTES FOR PLANTINGS IN DELAWARE

- ALL LANDSCAPING IN DELAWARE SHALL BE DONE IN ACCORDANCE WITH DELDOT STANDARD SPECIFICATIONS AND CONSTRUCTION DETAILS AND ANY SPECIAL PROVISIONS AND DETAILS PROVIDED ON THE PLANS AND IN THE INVITATION FOR BIDS FOR THIS CONTRACT.
- LANDSCAPING PLANS ARE FOR LANDSCAPING PURPOSES ONLY. AS-BUILT CONDITIONS MAY VARY. THE CONTRACTOR SHALL VERIFY ALL EXISTING CONDITIONS AND SHALL INFORM THE ENGINEER OF ANY DISCREPANCIES OR POTENTIAL PROBLEMS PRIOR TO COMMENCING WORK.
- THE CONTRACTOR SHALL VERIFY PLANT MATERIAL QUANTITIES SHOWN ON THE PLANS WITH THE TOTALS IN THE PLANT SCHEDULES. WHERE DISCREPANCIES OCCUR BETWEEN THE PLANS AND THE PLANT SCHEDULE, THE PLANS SHALL GOVERN.
- THE CONTRACTOR IS RESPONSIBLE FOR CONTACTING MISS UTILITY TO LOCATE ALL UTILITIES A MINIMUM OF 72 HOURS PRIOR TO PROCEEDING WITH ANY EXCAVATION FOR PLANT MATERIAL INSTALLATION.
- PLANT MATERIAL SHALL MAINTAIN THE FOLLOWING MINIMUM SETBACKS:
50' FROM OVERHEAD TRANSFORMER LINES
20' FROM OVERHEAD UTILITY LINES
6' FROM UNDERGROUND UTILITIES, DRAINAGE SWALES, FENCES, GUARDRAILS AND CURBS.
- NO PLANTS SHALL BE PLANTED WITHIN THE ROADWAY CLEAR ZONE OR DIRECTLY IN FRONT OF ROADWAY SIGN SIGHT LINES.
- ANY ADJUSTMENTS OR CHANGES TO PLANT LAYOUT SHALL BE APPROVED BY DELDOT PRIOR TO INSTALLATION.
- CONTRACTOR SHALL BE REQUIRED TO KEEP ALL PLANT MATERIALS SUFFICIENTLY WATERED FROM JUNE 15 THROUGH OCTOBER 1. WATERING, ONCE INITIATED, SHALL CONTINUE WITHOUT INTERRUPTION UNTIL ALL PLANTS ON THE PROJECT HAVE BEEN WATERED. PAYMENT SHALL BE PER 1,000 GALLONS OF WATER APPLIED AND SHALL BE BASED ON THE FOLLOWING SCHEDULE: MAJOR AND EVERGREEN TREES-15 GALLONS PER TREE, MINOR TREES-10 GALLONS PER TREE, SHRUBS-5 GALLONS PER SHRUB, PERENNIALS AND GROUNDCOVERS-10 GALLONS PER 100 SQUARE FEET OF PLANTING BED. WATER USED FOR THIS ITEM SHALL MEET THE REQUIREMENTS OF SECTION 803 OF THE STANDARD SPECIFICATIONS. TREE WATERING BAGS, IF UTILIZED, SHALL BE FILLED AS A PART OF THE WATERING OPERATION. PAYMENT SHALL BE AS DETAILED HEREIN. TREE WATERING BAGS SHALL REMAIN THE PROPERTY OF THE CONTRACTOR AND SHALL BE REMOVED PRIOR TO FINAL INSPECTION.

LANDSCAPE PLANTING NOTES FOR PLANTINGS IN MARYLAND

- ALL LANDSCAPING IN MARYLAND SHALL BE DONE IN ACCORDANCE WITH SPECIAL PROVISIONS PROVIDED IN THE INVITATION FOR BIDS FOR THIS CONTRACT.
- ALL SEEDING IN MARYLAND SHALL BE DONE IN ACCORDANCE WITH EITHER ITEM 734556-PERMANENT VEGETATIVE STABILIZATION, MARYLAND OR ITEM 734555-TEMPORARY VEGETATIVE STABILIZATION, MARYLAND. ALL PLANTING SHALL COMPLY WITH DELDOT STANDARD SPECIFICATION SECTION 737.

PLANT MATERIAL SHALL MAINTAIN THE FOLLOWING MINIMUM SETBACKS:
MAJOR DECIDUOUS TREES, EVERGREEN TREES AND SHRUBS 7' BEHIND GUARDRAIL
MINOR DECIDUOUS TREES 12' BEHIND GUARDRAIL
TREES AND SHRUBS 5' FROM CENTERLINE OF STORM DRAINS
TREES 7' FROM EDGE OF RIP RAP
TREES AND SHRUBS 7' FROM SWALE CENTERLINES
MAJOR DECIDUOUS TREES 5' FROM ACCESS ROADS
EVERGREEN TREES AND MINOR DECIDUOUS TREES 12' FROM ACCESS ROADS
SHRUBS, HERBACEOUS PLANTS AND ORNAMENTAL GRASSES 3' FROM ACCESS ROADS
- ALL WOODY VEGETATION SHALL BE KEPT 15' FROM THE TOE OF STORMWATER MANAGEMENT FILL EMBANKMENT AND 25' FROM OUTFALL STRUCTURES.
- A MINIMUM 4" DEPTH OF TOPSOIL SHALL BE PROVIDED AT THE ACCESS ROADS, TURNAROUNDS, AND DISTURBED RIGHT-OF-WAY AREAS TO BE SEEDED AT THE POND SITES. SEED THESE AREAS WITH MARYLAND TURFGRASS SEED MIX.
- NO PERMANENT CROWN VETCH SEEDING SHALL BE USED FOR THE LENGTH OF THE PROJECT THAT IS IN MARYLAND.
- PREPARATION OF PLANTING PITS AND BACKFILL SOIL SHALL COMPLY WITH SECTION 737.

THE SEED MIX FOR ALL STABILIZATION IN WETLANDS AND THEIR BUFFERS SHALL BE THE WET MEADOW SEED MIX IN ITEM 734556-PERMANENT VEGETATIVE STABILIZATION, MARYLAND. TALL FESCUE SHALL NOT BE USED IN WETLAND OR WETLAND BUFFER AREAS.
- THE PLANTING ZONES, CONTOUR LINES AND ELEVATION LABEL FOR THE 10 YEAR STORM ELEVATION, AS SHOWN ON THE PLANS SHALL BE FLAGGED IN THE FIELD DURING THE PLANTING OPERATION SO THAT THE LANDSCAPE CONTRACTOR CAN DETERMINE APPROPRIATE PLANT PLACEMENT BASED ON HYDROLOGIC ZONES.
- THE ENTIRE FREQUENTLY FLUCTUATING ZONE SHALL BE SEEDED AND MULCHED TO PROVIDE PERMANENT STABILIZATION. REFER TO SPECIAL PROVISIONS IN THE INVITATION FOR BIDS FOR SEED MIXES, TYPE OF MULCH AND APPLICATION RATES.
- NO STRAW OR SHREDDED HARDWOOD BARK MULCH SHALL BE USED IN THE SWM FACILITIES.
- THE PLANT STOCK FOR THE SWM FACILITIES SHALL BE FROM STOCK CULTIVATED IN SIMILAR HYDROLOGIC AND SOILS CONDITIONS AS THOSE PRESENT IN THE SWM FACILITY.

NOT FOR BIDDING
AUGUST 2015