

DRAFT
NOT FOR BIDDING
AUGUST 2015

CONDUIT SCHEDULE				
NO.	DISTANCE (L. F.)	DESCRIPTION	INSTALLATION	REMARKS
1	25	EXISTING CONDUIT	N/A	TO REMAIN
2	35	EXISTING CONDUIT	N/A	TO REMAIN
3	60	EXISTING CONDUIT	N/A	TO REMAIN
4	60	EXISTING CONDUIT	N/A	TO REMAIN
5	20	EXISTING CONDUIT	N/A	TO REMAIN
6	20	EXISTING CONDUIT	N/A	TO REMAIN
7	45	EXISTING CONDUIT	N/A	TO REMAIN
8	25	EXISTING CONDUIT	N/A	TO REMAIN
9	10	EXISTING CONDUIT	N/A	TO REMAIN
10	15	EXISTING CONDUIT	N/A	TO REMAIN
11	10	EXISTING CONDUIT	N/A	TO REMAIN
12	20	EXISTING CONDUIT	N/A	TO REMAIN
13	15	EXISTING CONDUIT	N/A	TO REMAIN
14	10	4" SCH80 PVC	TRENCH	ELECTRIC SERV.
15	10	4" SCH80 PVC	TRENCH	COMM CABLE
16	10	EXISTING CONDUIT	N/A	TO REMAIN
17	20	EXISTING CONDUIT	N/A	TO REMAIN
18	530	EXISTING CONDUIT	N/A	TO REMAIN
19	535	EXISTING CONDUIT	N/A	TO REMAIN
20	535	EXISTING CONDUIT	N/A	TO REMAIN
21	14	4" SCH80 PVC	TRENCH	ELECTRIC SERV.
22	11	4" SCH80 PVC	TRENCH	COMM CABLE
23	155	4" SCH80 PVC	TRENCH	ELECTRIC SERV.
24	150	4" SCH80 PVC	TRENCH	COMM CABLE

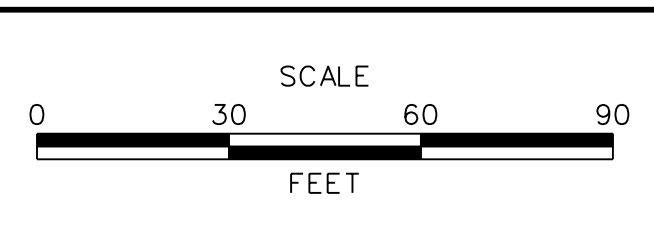
NOTES:

- ANY DAMAGE TO ITEMS NOTED TO BE RELOCATED OR RESET BY THE CONTRACTOR, AT THE DISCRETION OF THE ENGINEER, SHALL BE REPAIRED AND/OR REPLACED IN KIND AT THE CONTRACTOR'S EXPENSE.
- CONTRACTOR MUST VERIFY WITH PROJECT ENGINEER AND WIM VENDOR THAT ALL CONDUIT AND CONDUIT INSERTS INTO CABINET BASE(S) ARE ADEQUATE PRIOR TO PLACEMENT OF CONDUIT AND CABINET BASE.
- CONTROLLER CABINET BASE AND CONDUIT INSERTS TO BE PROVIDED BY THE CONTRACTOR.
- ALL ELECTRIC CABLES PERTAINING TO THE WIM SYSTEM WILL BE SIZED BY THE WIM VENDOR. VOLTAGE DROP AND AMPACITY CALCULATIONS MUST BE SUBMITTED TO THE PROJECT ENGINEER FOR APPROVAL. DEVICE SELECTION COULD AFFECT CABLE/CONDUIT SIZE OR MAY REQUIRE STEP-UP/STEP-DOWN TRANSFORMERS. SECONDARY POWER AND COMMUNICATIONS JUNCTION WELLS SHALL BE LOCATED NEXT TO EACH OTHER AND INSTALLED IN THE SAME TRENCH.
- SECONDARY POWER AND ADJACENT COMMUNICATIONS CONDUIT SHALL BE INSTALLED IN THE SAME TRENCH. CONDUIT SHALL MAINTAIN A MINIMUM 12 INCH HORIZONTAL AND 6 INCH VERTICAL SEPARATION BETWEEN EACH OTHER AND EXISTING UNDERGROUND INFRASTRUCTURE.
- ALL EQUIPMENT CABINETS (CVISN, WIM, LOOP DETECTOR, ETC) REQUIRING ELECTRICAL POWER SHALL HAVE AN EXTERNAL DISCONNECT SWITCH WITH AN APPROPRIATE ELECTRICAL RATING AND AN ENCLOSURE WITH A MINIMUM NEMA 3R RATING.
- EXCEPT AS NOTED BELOW, ALL EXISTING WIM AND CVISN CONDUIT AND DEVICES ARE TO REMAIN IN PLACE AND OPERATIONAL UNTIL PHASE 5 OF CONSTRUCTION OR UNTIL WEIGH STATION IS TEMPORARILY CLOSED. THE CONTRACTOR IS TO COORDINATE ALL ACTIVITIES WHICH MIGHT IMPACT WEIGH STATION OPERATIONS WITH THE ENGINEER AND THE DELAWARE STATE POLICE (DSP).
- PRIOR TO BEGINNING BRIDGE CONSTRUCTION AT STRAWBERRY LANE (BRI-486) THE CONTRACTOR MUST COORDINATE WITH THE WIM VENDOR TO TEMPORARILY RELOCATE FIBER OPTIC COMMUNICATIONS CABLE FROM NEAREST EXISTING JUNCTION WELL ON EITHER SIDE OF STRAWBERRY LANE ALONG THE NORTHBOUND SIDE OF US 301. COMMUNICATION CABLE IS TO BE TEMPORARILY RELOCATED IN A MANNER THAT WILL NOT INTERFERE WITH BRIDGE CONSTRUCTION OR WEIGH STATION OPERATIONS AND AS APPROVED BY THE ENGINEER. THE PROPOSED RELOCATION SCHEME MUST BE PROVIDED TO THE ENGINEER AT LEAST 2 WEEKS IN ADVANCE OF SCHEDULED RELOCATION WORK. THE ENGINEER WILL COORDINATE THE RELOCATION SCHEME AND SCHEDULE OF WORK WITH THE DSP AND CONTRACTOR. NO TEMPORARY RELOCATION WORK WILL BE AUTHORIZED UNTIL THE DSP AND ENGINEER APPROVE THE PROPOSED SCHEME AND SCHEDULE A TEMPORARY CLOSURE OF THE WEIGH STATION.
- THE ELECTRICAL CONTRACTOR SHALL COORDINATE THE INSTALLATION OF WIM CONDUITS WITH ITMS AND LIGHTING CONDUITS. WIM, ITMS AND LIGHTING CONDUITS MAY SHARE A COMMON TRENCH BUT SHALL NOT SHARE COMMON JUNCTION WELLS.
- CVISN ANTENNA ADJUSTMENTS TO BE PERFORMED BY OTHERS. THE CONTRACTOR IS TO NOTIFY DELDOT 30 DAYS PRIOR TO THE ANTICIPATED COMPLETION OF PHASE 5 TO COORDINATE THE CVISN WORK.

J:\2008 PROJECTS\E3X34801\700CAD\750AET\WIM\WS_301AET_001.DGN



ADDENDUMS / REVISIONS	

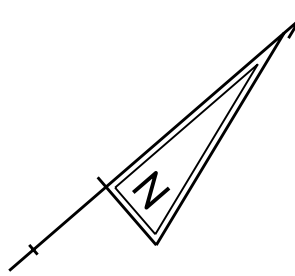


**US 301
MARYLAND STATE LINE
TO LEVELS ROAD**

CONTRACT T200811301	BRIDGE NO.
COUNTY NEW CASTLE	DESIGNED BY: RW CHECKED BY: RB

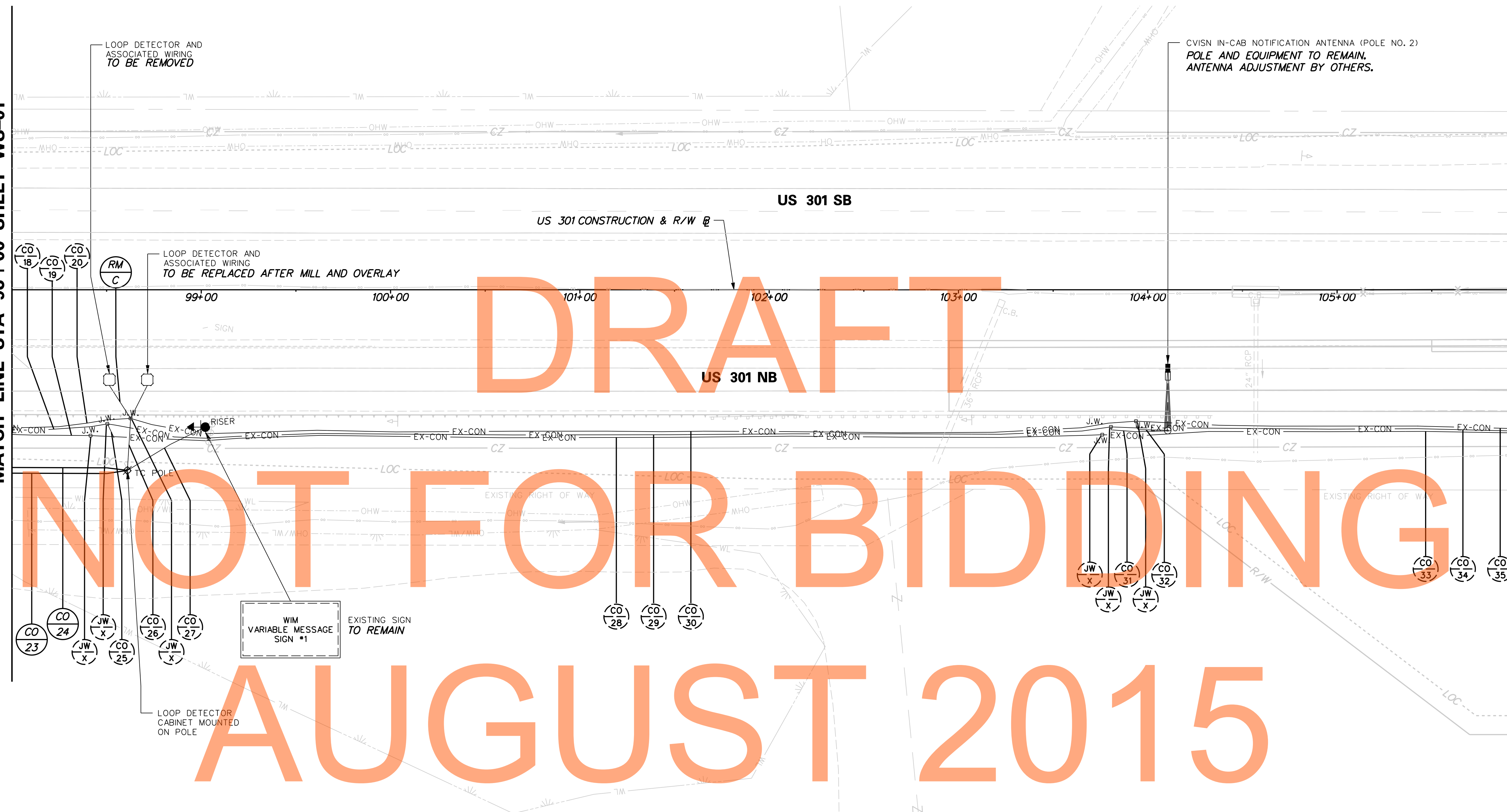
WIM AND CVISN PLANS

WS-01
SHEET NO. 800
TOTAL SHTS. 850



MATCH LINE STA 98+00 SHEET WS-01

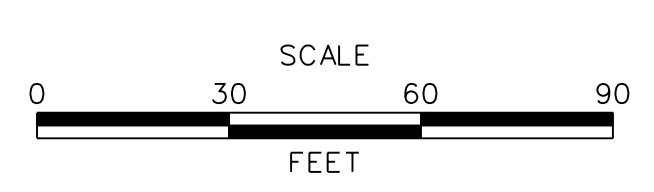
MATCH LINE STA 106+00 SHEET WS-03



DRAFT
NOT FOR BIDDING
AUGUST 2015

CONDUIT SCHEDULE				
NO.	DISTANCE (L.F.)	DESCRIPTION	INSTALLATION	REMARKS
25	30	EXISTING CONDUIT	N/A	TO REMAIN
26	30	EXISTING CONDUIT	N/A	TO REMAIN
27	50	EXISTING CONDUIT	N/A	TO REMAIN
28	535	EXISTING CONDUIT	N/A	TO REMAIN
29	530	EXISTING CONDUIT	N/A	TO REMAIN
30	535	EXISTING CONDUIT	N/A	TO REMAIN
31	35	EXISTING CONDUIT	N/A	TO REMAIN
32	25	EXISTING CONDUIT	N/A	TO REMAIN
33	670	EXISTING CONDUIT	N/A	TO REMAIN
34	675	EXISTING CONDUIT	N/A	TO REMAIN
35	675	EXISTING CONDUIT	N/A	TO REMAIN

ADDENDUMS / REVISIONS



US 301
MARYLAND STATE LINE
TO LEVELS ROAD

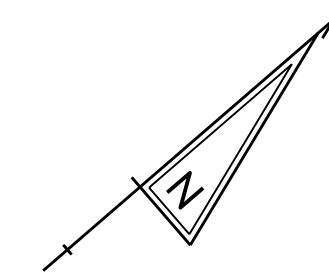
CONTRACT T200811301	BRIDGE NO.
COUNTY NEW CASTLE	DESIGNED BY: RW
	CHECKED BY: RB

WIM AND CVISN PLANS

WS-02	
SHEET NO.	801
TOTAL SHTS.	850

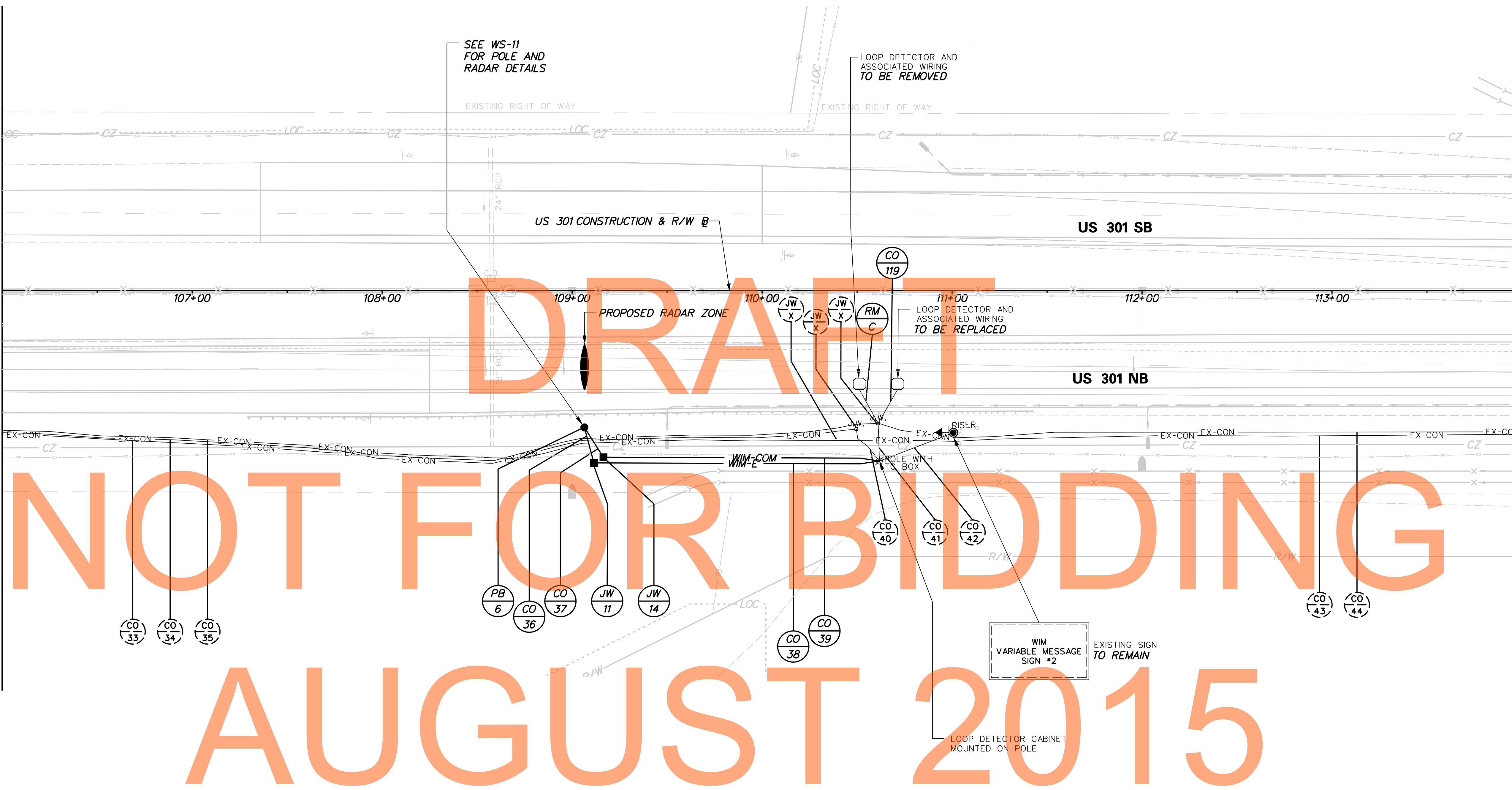
J:\2008 PROJECTS\E3X34801\700CADD\750AET\WIM\WS_301AET_002.DGN





MATCH LINE STA 106+00 SHEET WS-02

MATCH LINE STA 114+00 SHEET WS-04



DRAFT

NOT FOR BIDDING

AUGUST 2015

CONDUIT SCHEDULE

NO.	DISTANCE (L. F.)	DESCRIPTION	INSTALLATION	REMARKS
36	20	4" SCH80 PVC	TRENCH	ELECTRIC SERV.
37	20	4" SCH80 PVC	TRENCH	COMM CABLE
38	155	4" SCH80 PVC	TRENCH	ELECTRIC SERV.
39	150	4" SCH80 PVC	TRENCH	COMM CABLE
40	25	EXISTING CONDUIT	N/A	TO REMAIN
41	25	EXISTING CONDUIT	N/A	TO REMAIN
119	5	2" GALVANIZED RIGID STEEL	TRENCH	LOOP CABLE
42	45	EXISTING CONDUIT	N/A	TO REMAIN
43	430	EXISTING CONDUIT	N/A	TERMINATE IN NEW JW.
44	410	EXISTING CONDUIT	N/A	TERMINATE IN NEW JW.

ADDENDUMS / REVISIONS



**US 301
MARYLAND STATE LINE
TO LEVELS ROAD**

CONTRACT T200811301	BRIDGE NO.
COUNTY NEW CASTLE	DESIGNED BY: RW
	CHECKED BY: RB

WIM AND CVISN PLANS	
SHEET NO.	802
TOTAL SHTS.	850

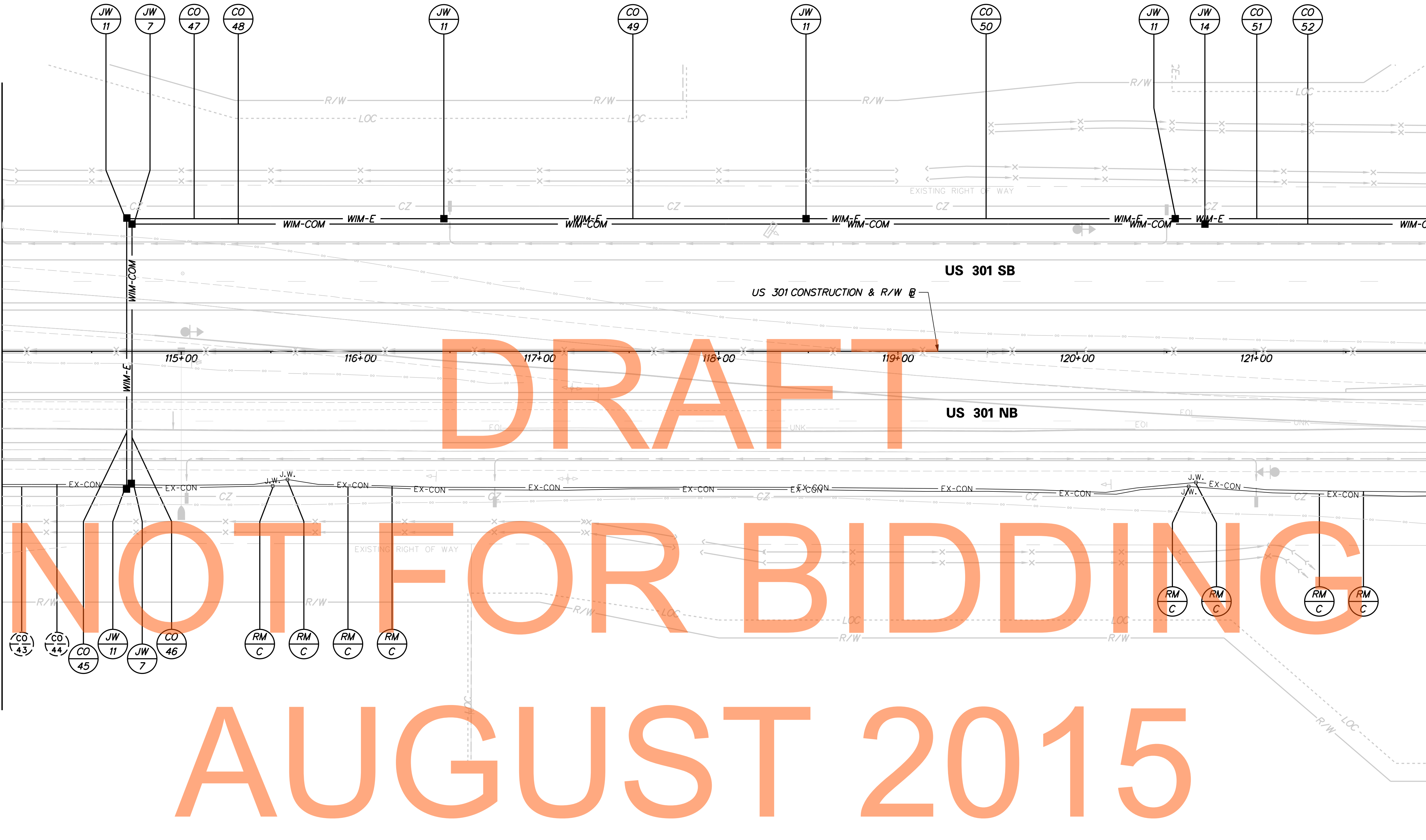
WS-03

J:\2008 PROJECTS\E3X34801\700CADD\750AET\WIM\WS_301AET_003.DGN



MATCH LINE STA 114+00 SHEET WS-03

MATCH LINE STA 122+00 SHEET WS-05



DRAFT

NOT FOR BIDDING

AUGUST 2015

CONDUIT SCHEDULE

NO.	DISTANCE (L.F.)	DESCRIPTION	INSTALLATION	REMARKS
45	150	4" SCH80 HDPE	BORE	ELECTRIC SERV.
46	145	4" SCH80 HDPE	BORE	COMM CABLE
47	175	4" SCH80 PVC	TRENCH	ELECTRIC SERV.
48	590	4" SCH80 PVC	TRENCH	COMM CABLE
49	200	4" SCH80 PVC	TRENCH	ELECTRIC SERV.
50	205	4" SCH80 PVC	TRENCH	ELECTRIC SERV.
51	240	4" SCH80 PVC	TRENCH	ELECTRIC SERV.
52	525	4" SCH80 PVC	TRENCH	COMM CABLE

ADDENDUMS / REVISIONS



**US 301
MARYLAND STATE LINE
TO LEVELS ROAD**

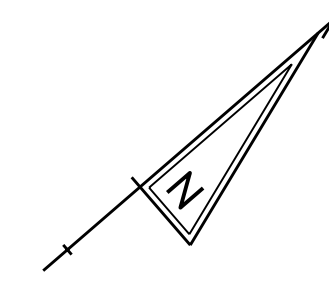
CONTRACT T200811301	BRIDGE NO.
COUNTY NEW CASTLE	DESIGNED BY: RW
	CHECKED BY: RB

WIM AND CVISN PLANS

WS-04	
SHEET NO.	803
TOTAL SHTS.	850

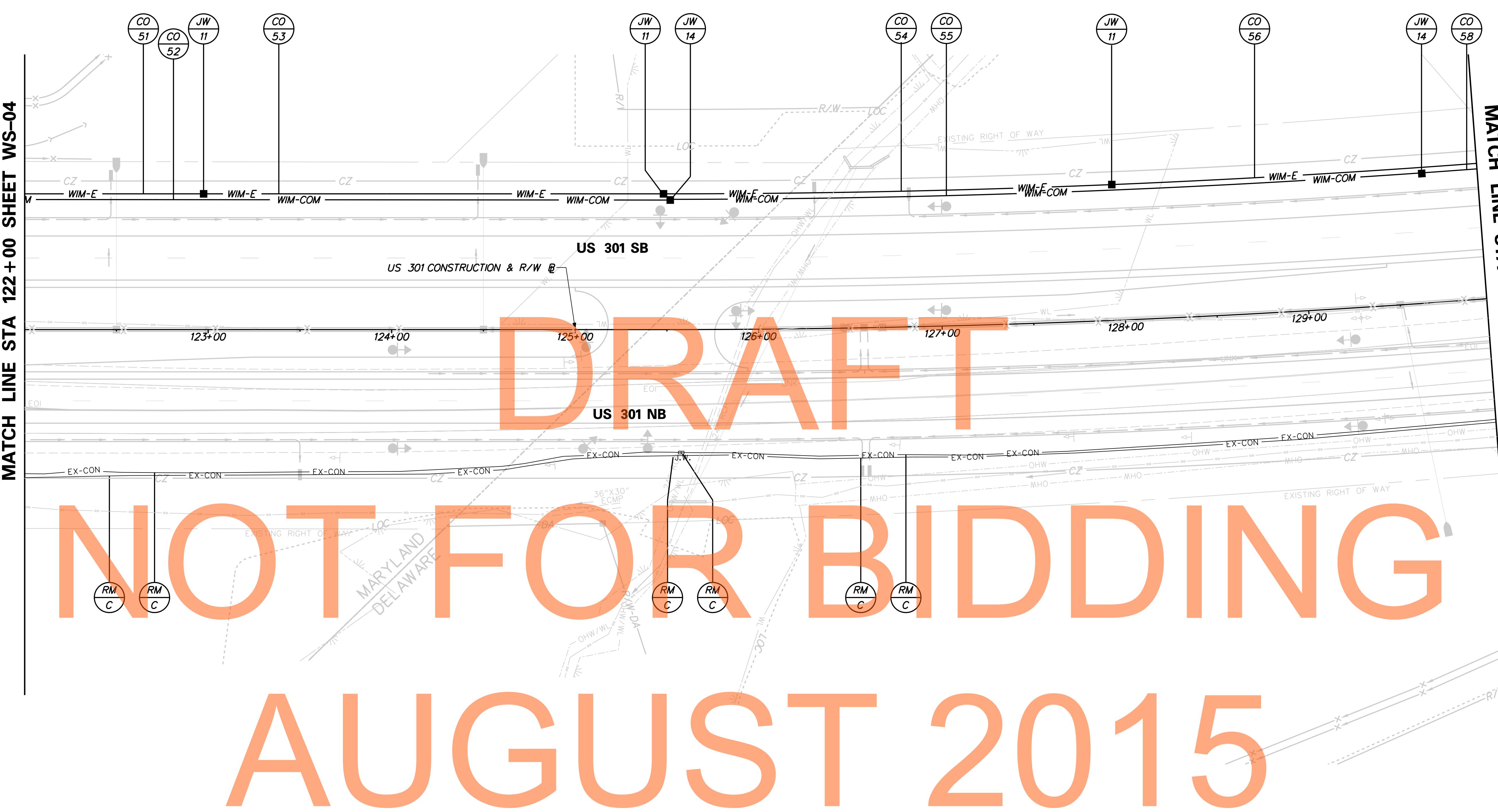
J:\2008 PROJECTS\E3\34801\700CAD\750AET\WIM\WS_301AET_004.DGN





MATCH LINE STA 122+00 SHEET WS-04

MATCH LINE STA 130+00 SHEET WS-06



DRAFT

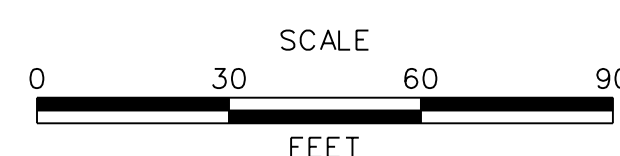
NOT FOR BIDDING

AUGUST 2015

CONDUIT SCHEDULE

NO.	DISTANCE (L. F.)	DESCRIPTION	INSTALLATION	REMARKS
53	250	4" SCH80 PVC	TRENCH	ELECTRIC SERV.
54	245	4" SCH80 PVC	TRENCH	ELECTRIC SERV.
55	420	4" SCH80 PVC	TRENCH	COMM CABLE
56	245	4" SCH80 PVC	TRENCH	ELECTRIC SERV.
58	335	4" SCH80 PVC	TRENCH	COMM CABLE

ADDENDUMS / REVISIONS



**US 301
MARYLAND STATE LINE
TO LEVELS ROAD**

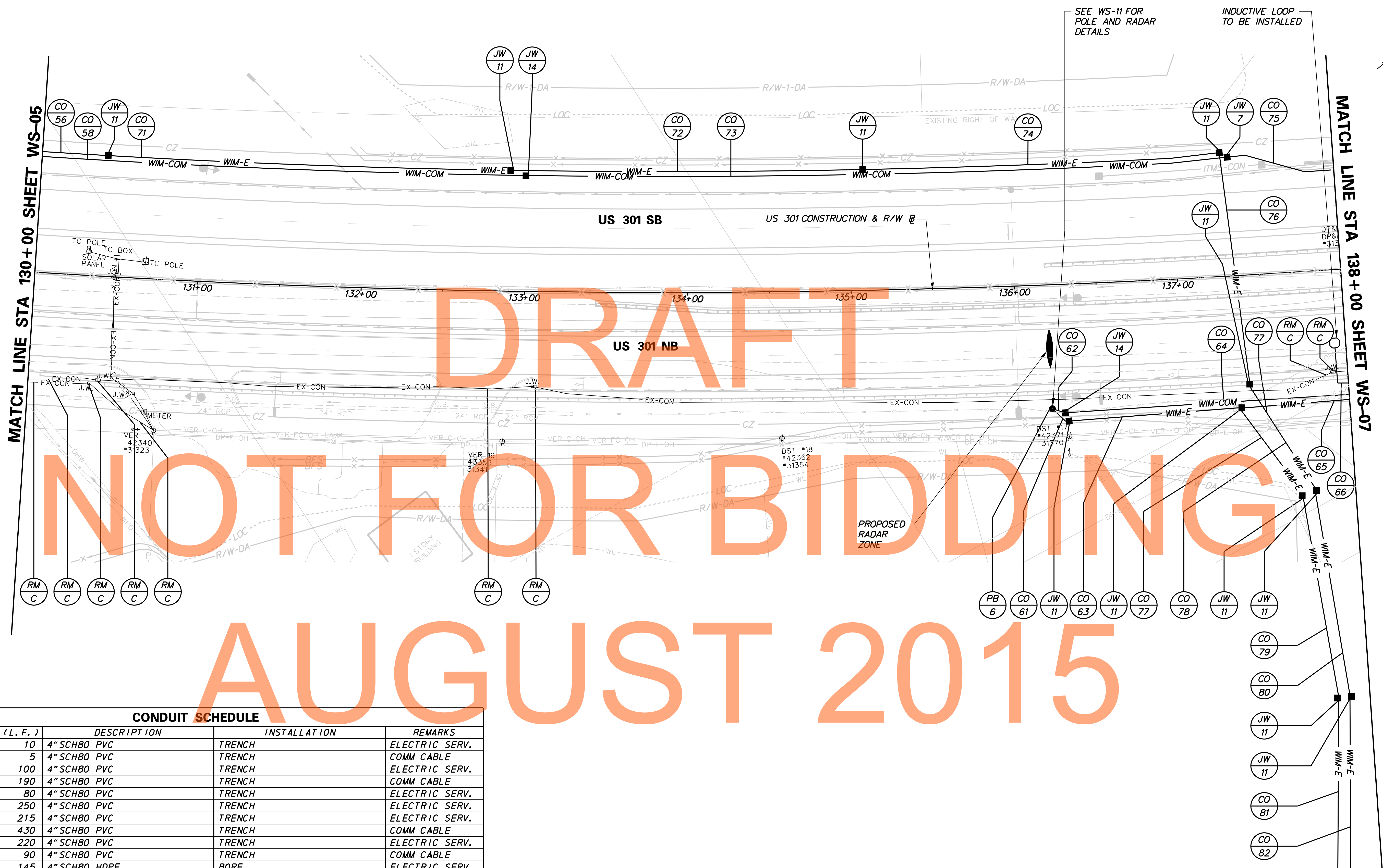
CONTRACT T200811301	BRIDGE NO.
COUNTY NEW CASTLE	DESIGNED BY: RW
	CHECKED BY: RB

WIM AND CVISN PLANS

WS-05

SHEET NO.	804
TOTAL SHTS.	850





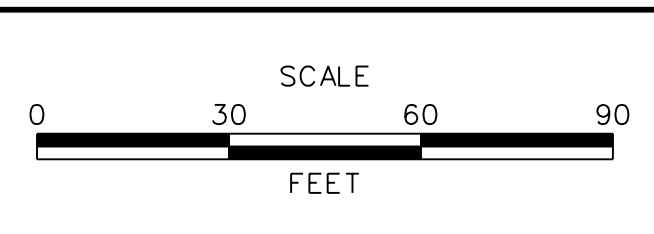
DRAFT
NOT FOR BIDDING
AUGUST 2015

CONDUIT SCHEDULE				
NO.	DISTANCE (L. F.)	DESCRIPTION	INSTALLATION	REMARKS
61	10	4" SCH80 PVC	TRENCH	ELECTRIC SERV.
62	5	4" SCH80 PVC	TRENCH	COMM CABLE
63	100	4" SCH80 PVC	TRENCH	ELECTRIC SERV.
64	190	4" SCH80 PVC	TRENCH	COMM CABLE
65	80	4" SCH80 PVC	TRENCH	ELECTRIC SERV.
71	250	4" SCH80 PVC	TRENCH	ELECTRIC SERV.
72	215	4" SCH80 PVC	TRENCH	ELECTRIC SERV.
73	430	4" SCH80 PVC	TRENCH	COMM CABLE
74	220	4" SCH80 PVC	TRENCH	ELECTRIC SERV.
75	90	4" SCH80 PVC	TRENCH	COMM CABLE
76	145	4" SCH80 HDPE	BORE	ELECTRIC SERV.
77	70	4" SCH80 PVC	TRENCH	ELECTRIC SERV.
78	75	4" SCH80 PVC	TRENCH	ELECTRIC SERV.
79	125	4" SCH80 PVC	TRENCH	ELECTRIC SERV.
80	125	4" SCH80 PVC	TRENCH	ELECTRIC SERV.
81	150	4" SCH80 PVC	TRENCH	ELECTRIC SERV.
82	150	4" SCH80 PVC	TRENCH	ELECTRIC SERV.

J:\2008 PROJECTS\E3\34801\700CADD\750AET\WIM\WS_301AET_006.DGN



ADDENDUMS / REVISIONS	

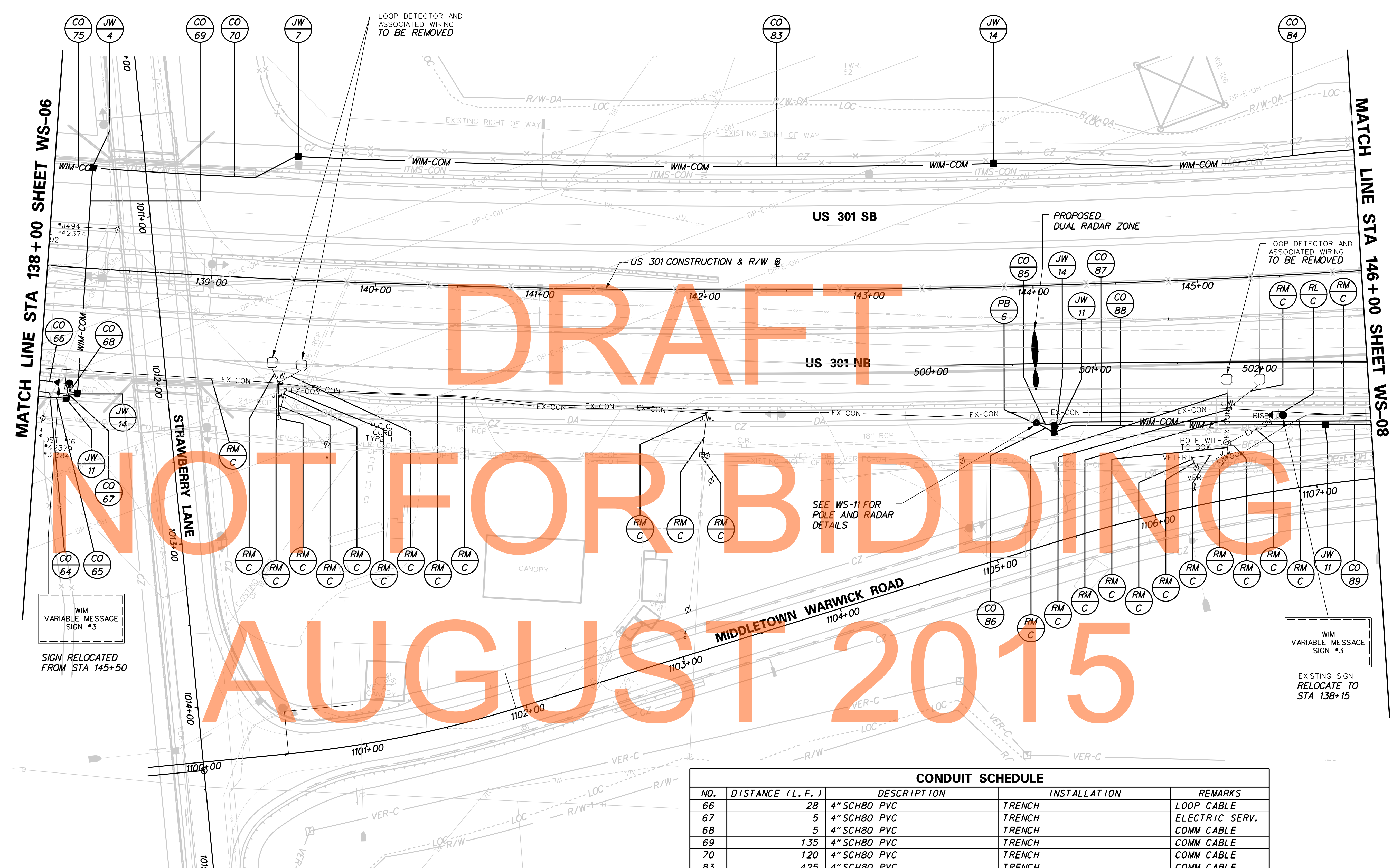


**US 301
MARYLAND STATE LINE
TO LEVELS ROAD**

CONTRACT T200811301	BRIDGE NO.
COUNTY NEW CASTLE	DESIGNED BY: RW
	CHECKED BY: RB

WIM AND CVISN PLANS	
SHEET NO.	805
TOTAL SHTS.	850

WS-06



MATCH LINE STA 138+00 SHEET WS-06

MATCH LINE STA 146+00 SHEET WS-08

MATCH LINE SHEET WS-10

WIM
VARIABLE MESSAGE
SIGN #3

SIGN RELOCATED
FROM STA 145+50

WIM
VARIABLE MESSAGE
SIGN #3

EXISTING SIGN
RELOCATE TO
STA 138+15

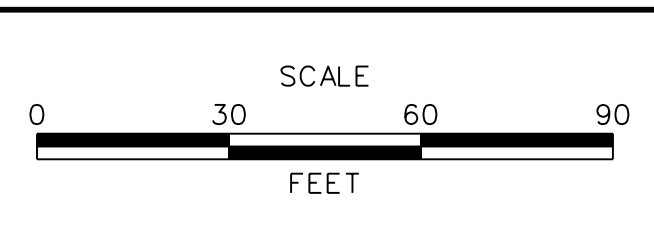
CONDUIT SCHEDULE				
NO.	DISTANCE (L. F.)	DESCRIPTION	INSTALLATION	REMARKS
66	28	4" SCH80 PVC	TRENCH	LOOP CABLE
67	5	4" SCH80 PVC	TRENCH	ELECTRIC SERV.
68	5	4" SCH80 PVC	TRENCH	COMM CABLE
69	135	4" SCH80 PVC	TRENCH	COMM CABLE
70	120	4" SCH80 PVC	TRENCH	COMM CABLE
83	425	4" SCH80 PVC	TRENCH	COMM CABLE
84	515	4" SCH80 PVC	TRENCH	COMM CABLE
85	11	4" SCH80 PVC	TRENCH	COMM CABLE
86	12	4" SCH80 PVC	TRENCH	ELECTRIC SERV.
87	500	4" SCH80 PVC	TRENCH	COMM CABLE
88	170	4" SCH80 PVC	TRENCH	ELECTRIC SERV.
89	175	4" SCH80 PVC	TRENCH	ELECTRIC SERV.

WS-07	
SHEET NO.	806
TOTAL SHTS.	850

J:\2008 PROJECTS\E3X34801\700CADD\750AET\WIM\WS_301AET_007.DGN



ADDENDUMS / REVISIONS	

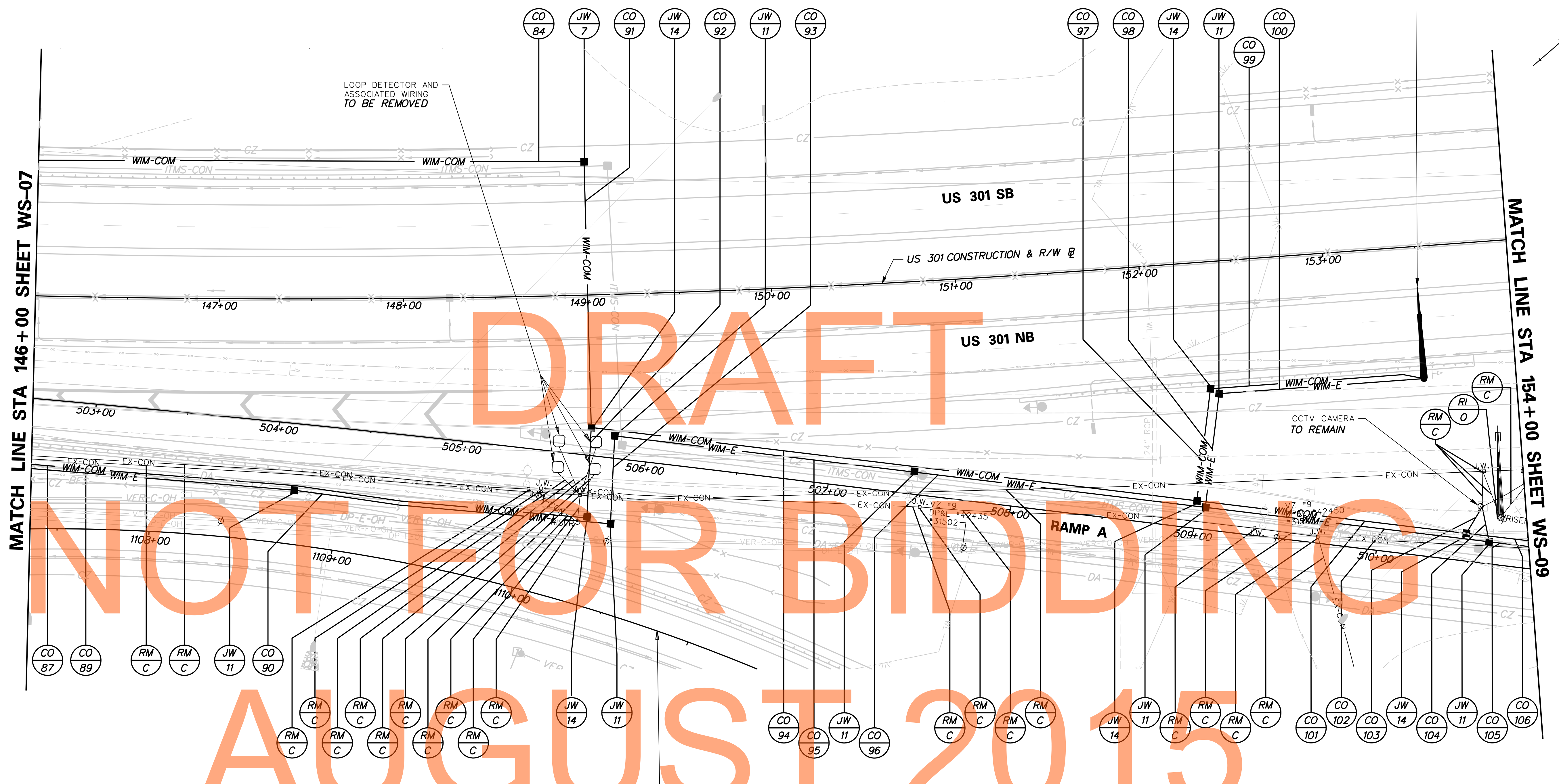


**US 301
MARYLAND STATE LINE
TO LEVELS ROAD**

CONTRACT T200811301	BRIDGE NO.
COUNTY NEW CASTLE	DESIGNED BY: RW
	CHECKED BY: RB

WIM AND CVISN PLANS

RELOCATED CVISN COMPLIANCE ANTENNA (POLE NO.3) FROM STA 153+90. SEE NOTES ON SHEET WS-11.



MATCH LINE STA 146+00 SHEET WS-07

MATCH LINE STA 154+00 SHEET WS-09

DRAFT
NOT FOR BIDDING
AUGUST 2015

MIDDLETOWN WARWICK ROAD

CONDUIT SCHEDULE

NO.	DISTANCE (L. F.)	DESCRIPTION	INSTALLATION	REMARKS
90	160	4" SCH80 PVC	TRENCH	ELECTRIC SERV.
91	140	4" SCH80 HDPE	BORE	COMM CABLE
92	50	4" SCH80 PVC	TRENCH	COMM CABLE
93	45	4" SCH80 PVC	TRENCH	ELECTRIC SERV.
94	330	4" SCH80 PVC	TRENCH	COMM CABLE
95	160	4" SCH80 PVC	TRENCH	ELECTRIC SERV.
96	160	4" SCH80 PVC	TRENCH	ELECTRIC SERV.
97	65	4" SCH80 PVC	TRENCH	COMM CABLE
98	65	4" SCH80 PVC	TRENCH	ELECTRIC SERV.
99	115	4" SCH80 PVC	TRENCH	COMM CABLE
100	120	4" SCH80 PVC	TRENCH	ELECTRIC SERV.
101	155	4" SCH80 PVC	TRENCH	COMM CABLE
102	155	4" SCH80 PVC	TRENCH	ELECTRIC SERV.
103	20	4" SCH80 PVC	TRENCH	ELECTRIC SERV.
104	20	4" SCH80 PVC	TRENCH	COMM CABLE
105	255	4" SCH80 PVC	TRENCH	ELECTRIC SERV.
106	115	4" SCH80 PVC	TRENCH	COMM CABLE

ADDENDUMS / REVISIONS



**US 301
MARYLAND STATE LINE
TO LEVELS ROAD**

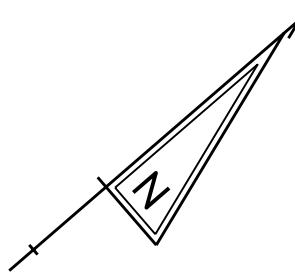
CONTRACT T200811301	BRIDGE NO.
COUNTY NEW CASTLE	DESIGNED BY: RW
	CHECKED BY: RB

WIM AND CVISN PLANS

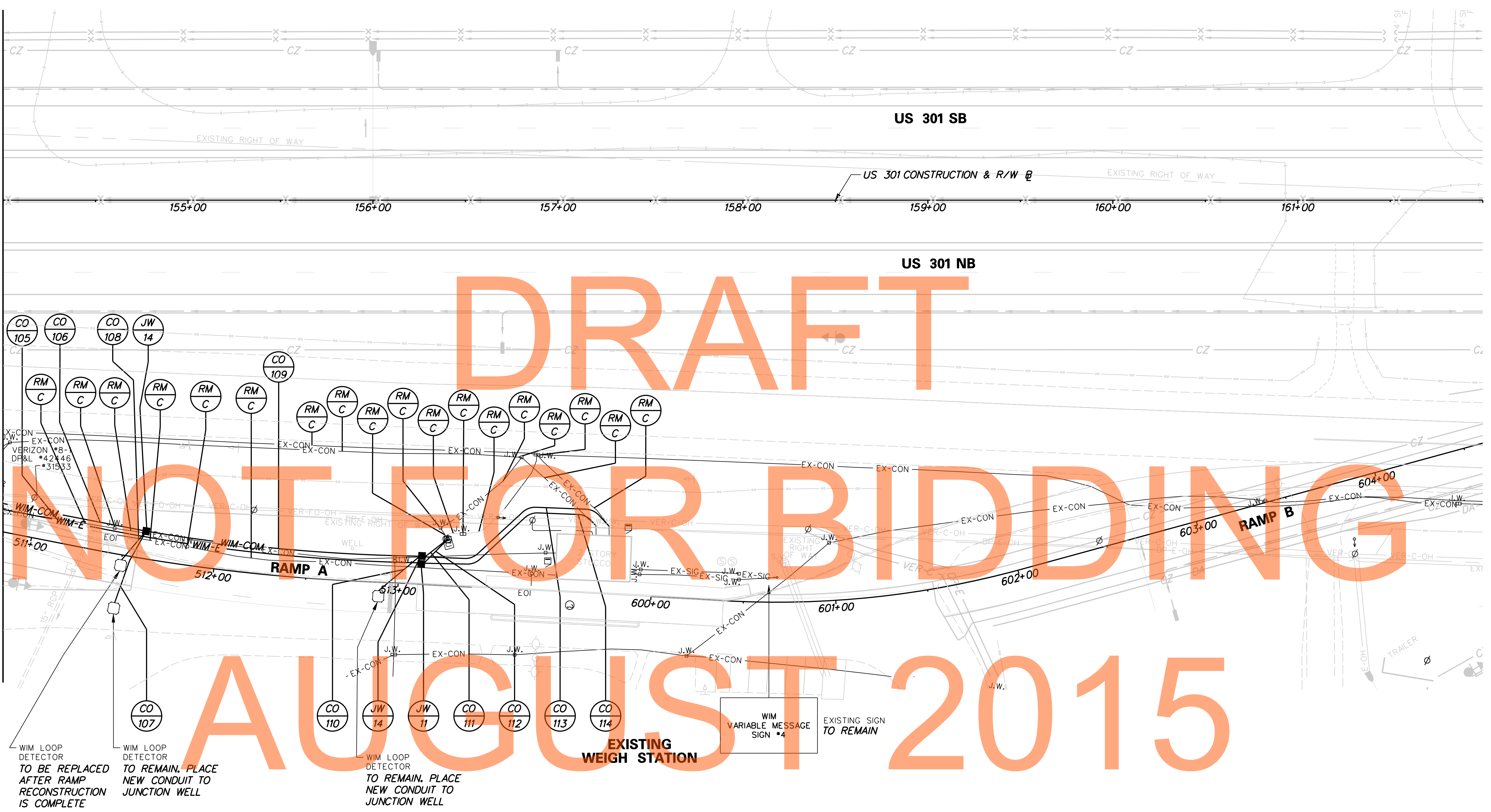
WS-08	SHEET NO. 807
	TOTAL SHTS. 850

J:\2008 PROJECTS\E3X34801\700CADD\750AET\WIM_WS_301AET_008.DGN





MATCH LINE STA 154+00 SHEET WS-08



WIM LOOP DETECTOR TO BE REPLACED AFTER RAMP RECONSTRUCTION IS COMPLETE

WIM LOOP DETECTOR TO REMAIN. PLACE NEW CONDUIT TO JUNCTION WELL

WIM LOOP DETECTOR TO REMAIN. PLACE NEW CONDUIT TO JUNCTION WELL

EXISTING WEIGH STATION

WIM VARIABLE MESSAGE SIGN *4

EXISTING SIGN TO REMAIN

CONDUIT SCHEDULE

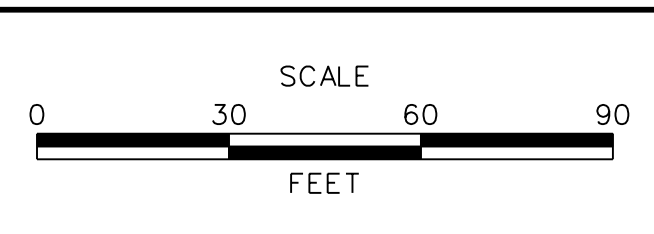
NO.	DISTANCE (L.F.)	DESCRIPTION	INSTALLATION	REMARKS
107	30	2" GALVANIZED RIGID STEEL	TRENCH	LOOP CABLE
108	10	2" GALVANIZED RIGID STEEL	TRENCH	LOOP CABLE
109	155	4" SCH80 PVC	TRENCH	COMM CABLE
110	20	2" GALVANIZED RIGID STEEL	TRENCH	LOOP CABLE
111	20	4" SCH80 PVC	TRENCH	COMM CABLE
112	20	4" SCH80 PVC	TRENCH	ELECTRIC SERV.
113	120	4" SCH80 PVC	TRENCH	COMM CABLE
114	110	4" SCH80 PVC	TRENCH	ELECTRIC SERV.

NOTE:
CONDUITS 107, 108, AND 110 ARE TO TIE INTO EXISTING LEAD-IN CABLES TO EXISTING LOOP DETECTORS.

J:\2008 PROJECTS\E3\34801\700CADD\716\WIM\WS_30\DS3_009.DGN



ADDENDUMS / REVISIONS	

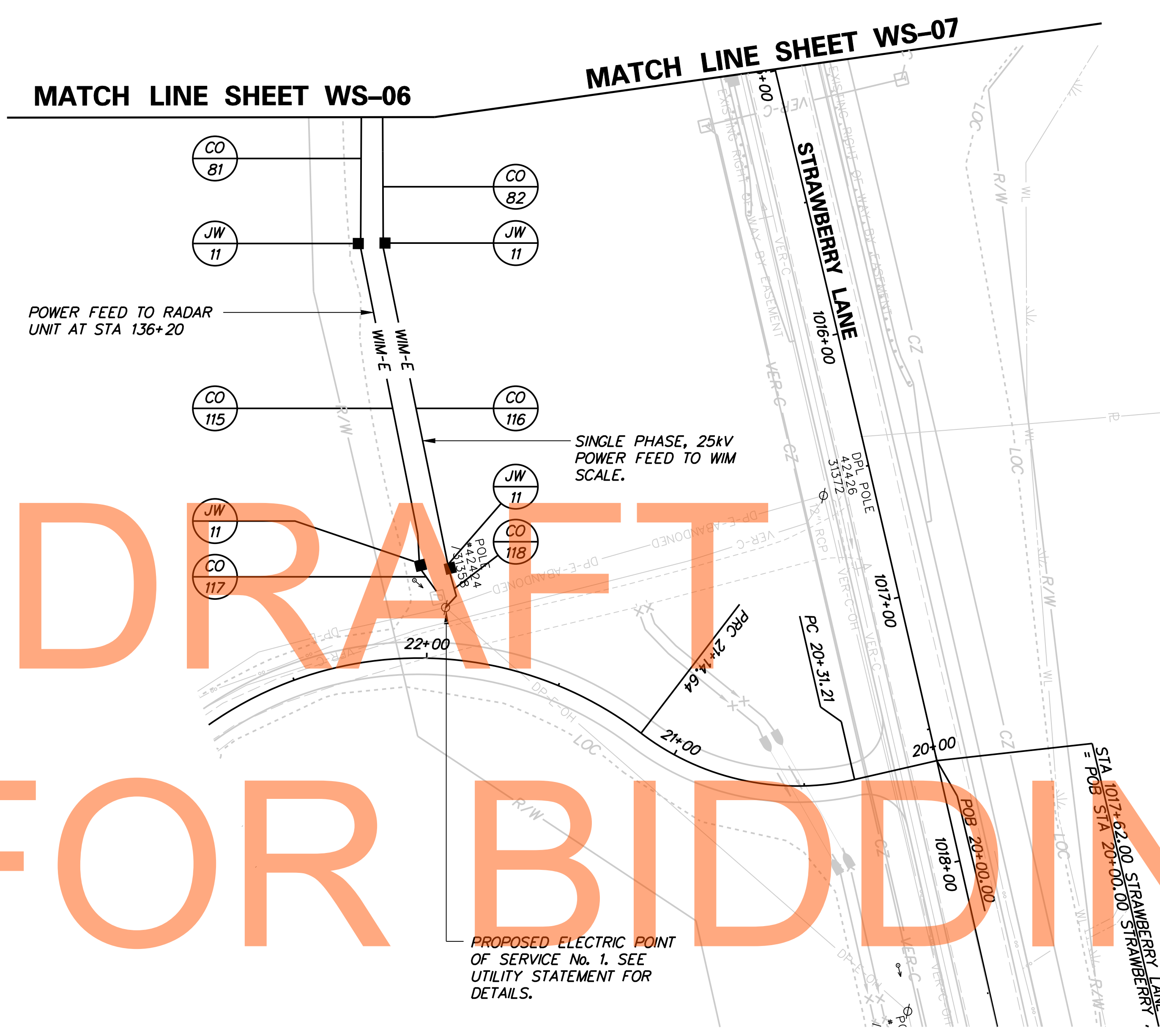


**US 301
MARYLAND STATE LINE
TO LEVELS ROAD**

CONTRACT T200811301	BRIDGE NO.
COUNTY NEW CASTLE	DESIGNED BY: RW
	CHECKED BY: RB

WIM AND CVISN PLANS

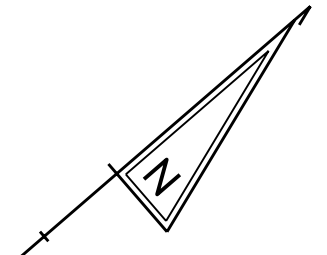
WS-09	SHEET NO. 808
	TOTAL SHTS. 850



DRAFT

NOT FOR BIDDING

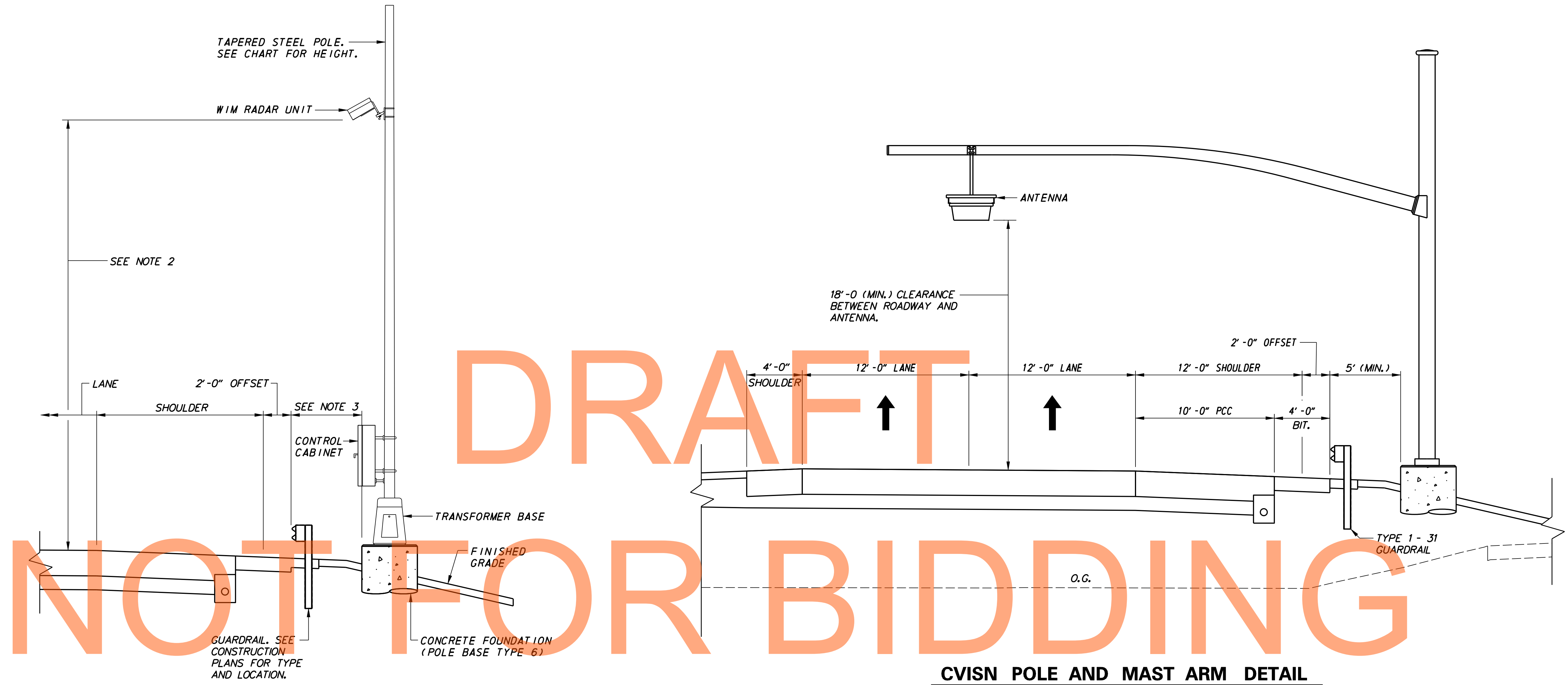
AUGUST 2015



CONDUIT SCHEDULE				
NO.	DISTANCE (L. F.)	DESCRIPTION	INSTALLATION	REMARKS
115	125	4" SCH80 PVC	TRENCH	ELECTRIC SERV.
116	125	4" SCH80 PVC	TRENCH	ELECTRIC SERV.
117	15	4" GALVANIZED RIGID STEEL	TRENCH	ELECTRIC SERV.
118	20	4" GALVANIZED RIGID STEEL	TRENCH	ELECTRIC SERV.

J:\2008 PROJECTS\E3X4801\700CADD\750AET\WIM\WS_301AET_010.DGN

DELAWARE DEPARTMENT OF TRANSPORTATION	ADDENDUMS / REVISIONS		US 301 MARYLAND STATE LINE TO LEVELS ROAD	CONTRACT T200811301 COUNTY NEW CASTLE	BRIDGE NO. DESIGNED BY: RW CHECKED BY: RB	WIM AND CVISN PLANS	SHEET NO. 809 TOTAL SHTS. 850
	WS-10						



DRAFT

NOT FOR BIDDING

CVISN POLE AND MAST ARM DETAIL
NB US 301 STATION 153+50

WIM RADAR SUPPORT DETAIL

WIM RADAR INFORMATION CHART							
RADAR NO.	POLE HEIGHT	POLE BASE TYPE	POLE LOCATION			REMARKS	
			STATION	OFFSET	NORTHING		EASTING
1	-	-	94+53	75'	-	-	MOUNT TO EXISTING POLE.
2	25'	6	97+00	83.25'	512277.9933	554714.9791	NEW INSTALLATION.
3	25'	6	109+06	72.00'	513198.1449	555495.4090	NEW INSTALLATION.
4	30'	6	136+20	76.00'	515317.9679	557204.9210	NEW INSTALLATION.
5	30'	6	144+00	83.50'	516018.4142	557568.3778	NEW INSTALLATION.

NOTES

- LOCATIONS NOTED ARE GIVEN TO CENTER OF POLE.
- RADAR MOUNTING HEIGHT TO BE DETERMINED BY WIM VENDOR.
- 5' (MIN.) FOR TYPE 1-31 GUARDRAIL, AND 5' -6" (MIN.) FOR TYPE 1-27 GUARDRAIL.
- FURNISHING AND INSTALLATION OF RADAR UNIT AND CONTROL CABINET TO BE INCLUDED WITH ITEM 763619 - WEIGH IN MOTION SYSTEM (WIM).
- PROPOSED POLES AND TRANSFORMER BASES TO BE FURNISHED AND INSTALLED BY DELDOT TRAFFIC FORCES. CONTRACTOR SHALL COORDINATE WITH DELDOT TRAFFIC FORCES AT 302.222.5920 TEN (10) WORKING DAYS PRIOR TO INSTALLING POLE BASES.

NOTES

- EXISTING CVISN COMPLIANCE POLE, CONTROLLER CABINET, MAST ARM, AND ANTENNA TO BE RELOCATED FROM STA 153+90 TO STA 153+50. RELOCATION AND NEW POLE BASE TO BE INCLUDED WITH ITEM 746951 - RELOCATING POLE AND MAST ARM. SEE POLE BASE DETAIL ON SHEET DT-22.
- PRIOR TO PHASE 5 OF CONSTRUCTION, THE ENGINEER WILL COORDINATE THE CVISN EQUIPMENT RELOCATIONS WITH THE CONTRACTOR AND CVISN REPRESENTATIVE.
- THE CONTRACTOR WILL BE REQUIRED TO REMOVE THE CONDUIT, JUNCTION WELLS, AND POLE BASE(S) DESIGNATED TO BE REMOVED AS NOTED ON THE PLANS. THE REMOVAL OF THESE ITEMS SHALL OCCUR ONLY AFTER APPROVAL FROM THE ENGINEER.
- PAYMENT FOR REMOVING CONDUIT, CABLE, AND JUNCTION WELLS WILL BE INCLUDED IN THE UNIT PRICE BID FOR ITEM 211000 - REMOVAL OF STRUCTURES AND OBSTRUCTIONS.

CVISN POLE AND MAST ARM INFORMATION CHART					
POLE NO.	POLE LOCATION			REMARKS	
	STATION	OFFSET	NORTHING		EASTING
1	94+53	75'	-	-	ANTENNA ADJUSTMENT ONLY.
2	104+10	75'	-	-	ANTENNA ADJUSTMENT ONLY.
3	153+50	72.00'	516930.8864	557866.2859	RELOCATE FROM STA 153+90.

J:\2008 PROJECTS\E3X34801\700CADD\750AET\WIM\WS_301AET_011.DGN