



**Delaware Department  
of Transportation**

# **CONTRACTOR INFORMATION WORKSHOP**

## **AUGUST 24, 2015**

**US 301, MARYLAND STATE LINE TO SR 1**

**CONTRACTOR INFORMATIONAL MEETING**

**DATE:** August 24, 2015

**LOCATION:** University of Delaware  
John M. Clayton Hall, Room 128  
100 David Hollowell Drive  
Newark, DE 19716

**TIME:** 10:00 AM to Noon

**AGENDA**

- I. Welcome and Introductions (Diane Gunn, DeIDOT US301 Project Manager)
  - a. Contractor Information Website Available: [www.us301.deldot.gov](http://www.us301.deldot.gov)
  - b. Bid Advertisement and Construction Schedule
  - c. Unofficial Question and Answer Procedure
  
- II. US 301 Mainline Projects Overview (Alan Marteney, US301 GEC Team)
  - a. General
    - i. Public involvement/Local Ordinances
    - ii. Permits/Environmental Monitor/Archaeologist
    - iii. Erosion and Sediment Control/Stormwater Management/CCR
    - iv. Traffic Management Plan/Monitor
    - v. Utility Relocations Status
  - b. Contracts Review
  
- III. Construction Administration (Javier Torrijos, DeIDOT Assistant Director, Construction)
  - a. DeIDOT/GEC/FHWA Management Team
  - b. Construction Inspection Approach
  - c. Public Construction Informational Meetings
  - d. Project Audits
  
- IV. Contractual Issues (Jim Hoagland, DeIDOT Contract Administration)
  - a. Advertisement for Bids on State of Delaware Bid Solicitation Directory: <http://bids.delaware.gov/>
  - b. DBE/Trainee Requirements
  - c. Craft Training Prequalification
  - d. Maryland Wage Rates-Contract T200811301 only
  - e. Bid Options for Pile Alternatives
  - f. Questions during Bid Advertisement Period
  
- V. Closing/Questions (Diane Gunn, DeIDOT US301 Project Manager)



# WELCOME AND INTRODUCTIONS

- CONTRACTOR INFORMATION WEBSITE: [www.us301.deldot.gov](http://www.us301.deldot.gov)

The screenshot displays the website for the Delaware Department of Transportation (DelDOT). At the top, there is a banner for the State of Delaware with the slogan "EXCELLENCE IN TRANSPORTATION - EVERY TRIP • EVERY MODE • EVERY DOLLAR • EVERYONE". Below the banner, the page is titled "Delaware Department of Transportation".

The main content area is divided into several sections:

- Home:** A list of links including About DelDOT, Secretary Message, Press Releases, Divisions, FAQs, Employment, Public Workshops, and Related Links (DMV, DART, EZPass, Contact Information, Office Locations).
- Services +**
- Information +**
- Visit Us:** Social media icons for Twitter, Facebook, and YouTube.
- Featured:** A section for featured content.
- Projects:** A section titled "U.S. Route 301 Project Development" with a "Project Update" dated August 18, 2015, and a "Project Video" link.
- RECENT PROJECT ACTIVITIES:** A section detailing a direct loan approved by USDOT in August 2015 for the construction of the New US 301 Mainline toll project.
- INFORMATION:** A vertical navigation menu on the right side of the page with the following links: Project Home, Contractor Information (highlighted with a red arrow), Project Overview, Financial, Maps, Record of Decision, Spur Monitoring Reports, and Traffic and Revenue Reports.



# WELCOME AND INTRODUCTIONS

- **CONTRACTOR INFORMATION WEBSITE:** [www.us301.deldot.gov](http://www.us301.deldot.gov)

Delaware Department of Transportation

## Home

About DelDOT  
Secretary Message  
Press Releases  
Divisions  
FAQs  
Employment  
Public Workshops  
Related Links  
DMV  
DART  
EZPass  
Contact Information  
Office Locations

## Services +

## Information +

## Visit Us



## Featured

## Projects

### U.S. Route 301 Project Development

#### Contractor Information

The Delaware Department of Transportation (DelDOT) anticipates advertising for bids for the construction of the US301, Maryland State Line to SR 1 project. The information on this website is provided only to assist potential contractors and suppliers in becoming familiar with the project. The various sections of information on this website are not Contract Documents and are provided for informational purposes only.

Notice of the availability of the official Contract Documents will be posted on the State of Delaware Bid Solicitation Directory: <http://bids.delaware.gov>

**A Contractors Information Meeting will be held on Monday, August 24, 2015 at Clayton Hall, Room 128, University of Delaware, 100 David Hollowell Drive, Newark, DE 19716 from 10am to 12pm (when using Google maps, MapQuest, or GPS Devices – plug in 100 New London Road, Newark, DE 19711 )**

#### IMPORTANT NOTICE - PREQUALIFICATION

As a prequalification to submit a bid on the US 301 project, all contractors and subcontractors must certify that their company, either independently or through agreement with other organizations, is providing craft training for journeyman and apprentice levels through a bona fide program approved by and registered with the State of Delaware and/or United States Department of Labor, to comply with 29 Del C. 6962(c)(11). A form is provided under the GENERAL INFORMATION tab that will be required to be submitted with any bid for the US 301 project along with program documentation. A Delaware Business License is not needed as part of the pre-qualification to bid. A Delaware Business License will be required as part of the contract award and execution process.

## INFORMATION



Project Home

Contractor Information

Project Overview

Financial

Maps

Record of Decision

Spur Monitoring Reports

Traffic and Revenue Reports

NEPA Process

Public Workshops

Public Involvement

Community Meetings

Press Releases

Archives

## PUBLIC FEEDBACK

[Customer Relations](#)

302.760.2080

800.652.5600 (DE only)





# WELCOME AND INTRODUCTIONS

- **CONTRACTOR INFORMATION WEBSITE:** [www.us301.deldot.gov](http://www.us301.deldot.gov)

+ GENERAL INFORMATION 

+ CONTRACT T200911308, US 301, SR 896 TO SR 1 (US 301 PROJECT REFERENCE 1A)

+ CONTRACT T200911302, US 301 and SR 1 INTERCHANGE (US 301 PROJECT REFERENCE 1B)

+ CONTRACT T200911301, US 301, NORFOLK SOUTHERN RR TO SR 896 (US 301 PROJECT REFERENCE 1C)

+ CONTRACT T201011302, US 13 AND PORT PENN RD. INTERSECTION (US 301 PROJECT REFERENCE 1D)

+ CONTRACT T200911303, US 301, LEVELS RD TO SUMMIT BRIDGE ROAD (US 301 PROJECT REFERENCE 2A)

+ CONTRACT T201011301, SUMMIT BRIDGE RD AND ARMSTRONG CORNER RD INTERSECTION IMPROVEMENTS (US 301 PROJECT REFERENCE 2B)

+ CONTRACT T200811301, US 301, MARYLAND STATE LINE TO LEVELS ROAD (US 301 PROJECT REFERENCE 3)

+ LANDSCAPING CONTRACTS

# WELCOME AND INTRODUCTIONS

- **CONTRACTOR INFORMATION WEBSITE:** [www.us301.deldot.gov](http://www.us301.deldot.gov)

## – GENERAL INFORMATION

- Introduction to US 301 Project and Prequalification Form**
- Contract Limits Map**
- Tentative Contract Schedule Table**
- Transportation Management Plan**
- Answers to your Questions**
- ✉ For all other "General Questions"**



**US 301, MARYLAND STATE LINE TO SR 1  
MAINLINE CONSTRUCTION CONTRACTS  
TENTATIVE BID ADVERTISEMENT AND CONSTRUCTION SCHEDULE  
August 2015**

US301 PROJECT REFERENCE	DELDOT CONTRACT NO.	CONTRACT DESCRIPTION	BID ADVERTISEMENT DATE	NOTICE TO PROCEED/FIRST CHARGABLE DAY	ESTIMATED CONSTRUCTION DURATION (MONTHS)
N/A	TBD	ADVANCE CLEARING	AUG/SEPT 2015	DEC/JAN 2015	4 (Work to end by April 15, 2016)
1A	T200911308	US 301, SR 896 TO SR1	AUGUST 2015	JANUARY 2016	40 (35 TO OPEN US 301)
1B	T200911302	US 301 & SR 1 INTERCHANGE	JANUARY 2016	APRIL 2016	29
1C	T200911301	SR1, NORFOLK SOUTHERN RR TO SR 896	NOVEMBER 2015	MARCH 2016	28
1D	T201011302	US 13 AND PORT PENN RD INTERSECTION	JANUARY 2016	APRIL 2016	26
2A	T200911303	US 301, LEVELS RD TO SUMMIT BRIDGE RD	SEPTEMBER 2015	JANUARY 2016	40 (35 TO OPEN US 301)
2B	T201011301	SUMMIT BRIDGE RD AND ARMSTRONG CORNER RD INTERSECTION IMPROVEMENTS	AUGUST 2016	JANUARY 2017	19
3	T200811301	US 301, MARYLAND STATE LINE TO LEVELS ROAD	NOVEMBER 2015	FEBRUARY 2016	28
		TOLL INTEGRATION	DeIDOT will separately select a Toll Integrator. US301 road construction contracts must coordinate activities with the Toll Integrator per the information in the contract documents.		
	T201511301	US 301 LANDSCAPING, LEVELS RD TO SUMMIT BRIDGE RD	SUMMER 2018	SPRING 2019	TBD
	T201511301	US 301 LANDSCAPING, SUMMIT BRIDGE RD TO SR 1	SUMMER 2018	SPRING 2019	TBD



# WELCOME AND INTRODUCTIONS

- CONTRACTOR INFORMATION WEBSITE: [www.us301.deldot.gov](http://www.us301.deldot.gov)

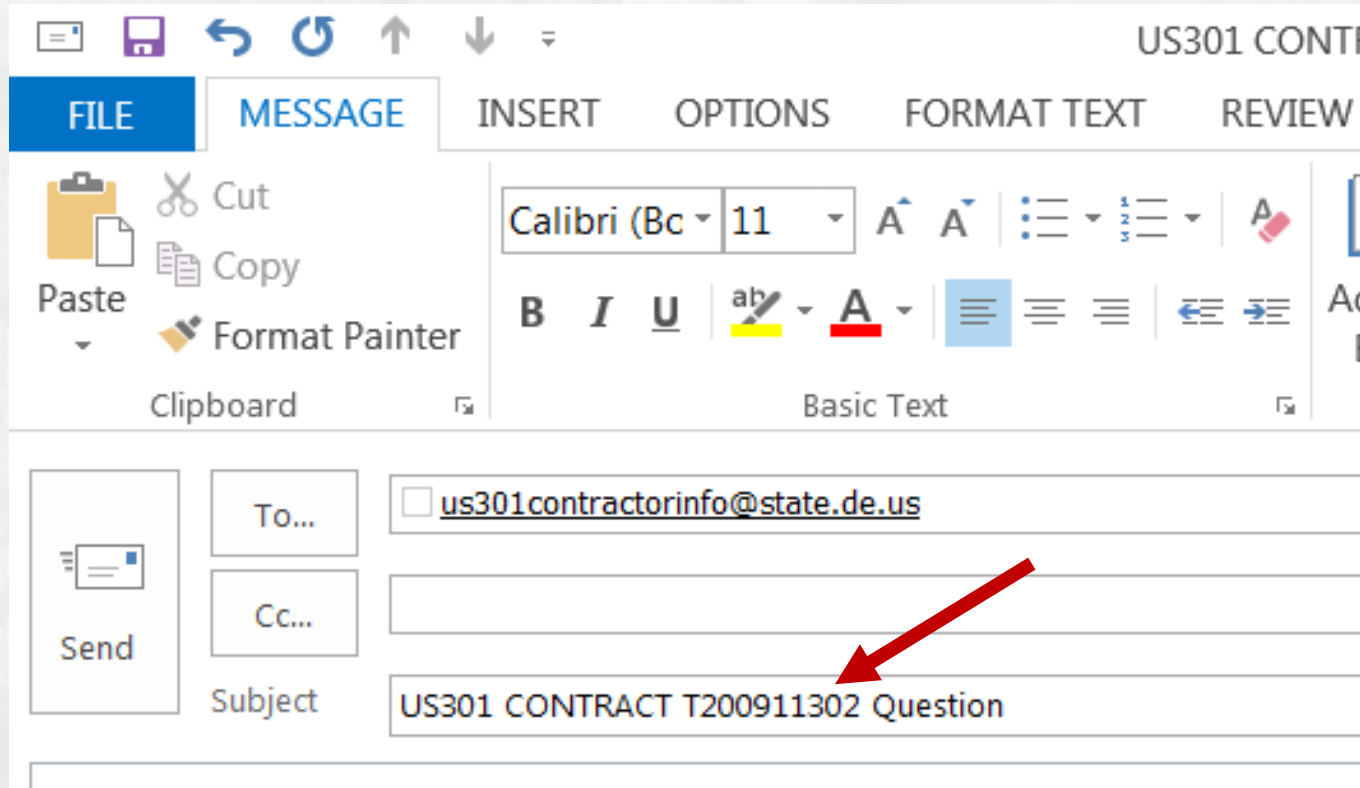
f. Answers to your Questions

g.  Questions About *This Contract?*





# WELCOME AND INTRODUCTIONS



- Questions for each contract on Contractor Information Website to be disabled Approximately 2 weeks prior to Official Bid Advertisement.
- Responses to questions on Contractor Information Website are unofficial and will be posted approximately 1 week prior to Official Bid Advertisement.
- Questions and Official Answers during Bid Advertisement Period per information in Advertised Bid Proposal.

# WELCOME AND INTRODUCTIONS

- **CONTRACTOR INFORMATION WEBSITE:** [www.us301.deldot.gov](http://www.us301.deldot.gov)

+ GENERAL INFORMATION

+ CONTRACT T200911308, US 301, SR 896 TO SR 1 (US 301 PROJECT REFERENCE 1A)

+ CONTRACT T200911302, US 301 and SR 1 INTERCHANGE (US 301 PROJECT REFERENCE 1B)

+ CONTRACT T200911301, US 301, NORFOLK SOUTHERN RR TO SR 896 (US 301 PROJECT REFERENCE 1C)

+ CONTRACT T201011302, US 13 AND PORT PENN RD. INTERSECTION (US 301 PROJECT REFERENCE 1D)

+ CONTRACT T200911303, US 301, LEVELS RD TO SUMMIT BRIDGE ROAD (US 301 PROJECT REFERENCE 2A)

+ CONTRACT T201011301, SUMMIT BRIDGE RD AND ARMSTRONG CORNER RD INTERSECTION IMPROVEMENTS (US 301 PROJECT REFERENCE 2B)

+ CONTRACT T200811301, US 301, MARYLAND STATE LINE TO LEVELS ROAD (US 301 PROJECT REFERENCE 3)

+ LANDSCAPING CONTRACTS



# WELCOME AND INTRODUCTIONS

- **CONTRACTOR INFORMATION WEBSITE:** [www.us301.deldot.gov](http://www.us301.deldot.gov)

— CONTRACT T200911308, US 301, SR 896 TO SR 1 (US 301 PROJECT REFERENCE 1A)

Anticipated Advertisement date is August 31, 2015. Questions to be directed to [www.bids.delaware.gov](http://www.bids.delaware.gov) after August 31.

- a. Roll Plans**
- b. Construction Plans**
- c. Specifications (*where available*)**
- d. Items and Quantities**
- e. Geotechnical Boring Logs**
- f. Cross Sections**

# WELCOME AND INTRODUCTIONS

- **CONTRACTOR INFORMATION WEBSITE:** [www.us301.deldot.gov](http://www.us301.deldot.gov)

## **b. Construction Plans**

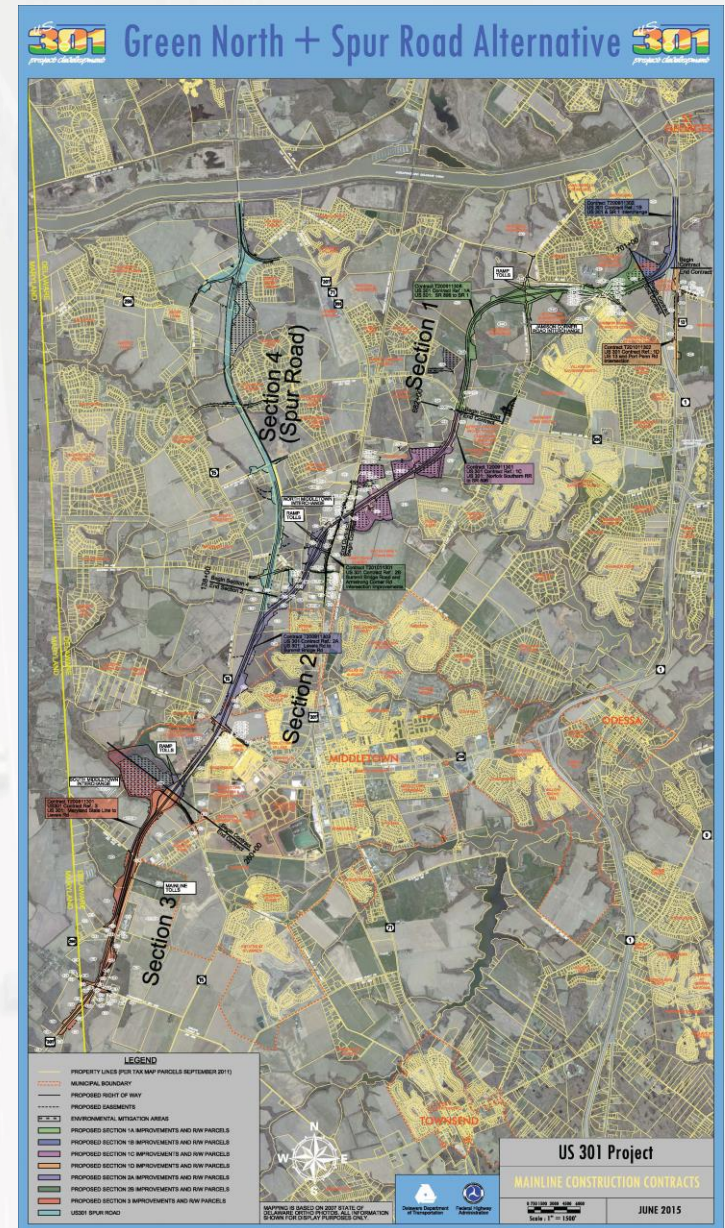
- ▣ 001 to 016 Title, Index, Legend, Notes & Earthwork
- ▣ 017 to 058 Typical Sections
- ▣ 059 to 066 H & V Control
- ▣ 067 to 111 Construction Plans
- ▣ 112 to 159 Profiles
- ▣ 160 to 201 Grades & Geometrics
- ▣ 202 to 218 Pavement Joint Layout Plans
- ▣ 219 to 223 Borrow Site Grading Plans
- ▣ 224 to 246 Construction Details
- ▣ 247 to 261 Structure Location Plan & Bridge 1-436-US301 Bridge Over Unnamed Tributary to Scott Run
- ▣ 262 to 313 Bridge 1-436A-Hyetts Corner Road Bridge Over US301
- ▣ 314 to 376 Bridge 1-458-Hyetts Corner Road Bridge Over Scott Run
- ▣ 377 to 437 Bridge1-460N-US301 Northbound Bridge Over Scott Run
- ▣ 438 to 496 Bridge 1-460S-US301 Southbound Bridge Over Scott Run
- ▣ 497 to 540 Bridge1-460A-Jamison Corner Road Bridge Over US301
- ▣ 541 to 580 Bridge 1-466 N & S-US301 North bound & Southbound Bridges Over SR896
- ▣ 581 to 594 Bridge 1-444-US301 Culvert At Wildlife Crossing
- ▣ 595 to 604 Maintenance of Streamflow Plans
- ▣ 605 to 621 Scott Run Stream Restoration Plans and Details
- ▣ 622 to 657 Stormwater Management
- ▣ 658 to 673 Environmental Compliance
- ▣ 674 to 709 General MOT, Notes, Permanent Warning Sign & Phasing MOT & E & S (1)
- ▣ 710 to 742 Phasing MOT & E & S & Detour Plans (2)
- ▣ 743 to 752 Landscaping
- ▣ 753 to 769 Lighting
- ▣ 770 to 775 Utility Relocation (1)
- ▣ 776 to 789 Utility Relocation (2)
- ▣ 790 to 830 Signing Striping & Conduit
- ▣ 831 to 832 Signal Plans
- ▣ 833 to 875 Ramp Toll Plaza Plans





# US 301 MAINLINE PROJECTS OVERVIEW

- 13+ Miles Divided Limited Access Highway
- 7 Mainline Construction Contracts
  - Under Construction Concurrently
- 3 New Full Access Interchanges
  - North Serving Connections to SR 1
- Excavation and Embankment; Lightweight Fill
- 12" Portland Cement Concrete Pavement on Mainline & Ramps; Bituminous Concrete Pavement on Side Roads
- Steel Girder and Concrete Girder Bridges
- Mechanically Stabilized Earth Walls
- P.C.C. Box Culverts; P.C.C. Arch Culverts
- Emergency-Only Access Ramps & Median Crossovers
- All Electronic Toll (AET) Facilities
  - Mainline and North Serving Ramps at 3 Full Access Interchanges
- Roadway Lighting, Signing, Markings, ITMS and Signals
- Utility Relocations, NSRR Coordination
- Drainage, Stormwater Management, E&S Measures
- Environmental Mitigation, Stream Restoration
- Maintenance of Traffic
- Limited Landscaping In Initial Contracts; 2 Separate Landscaping Contracts for Rest of Mainline



# US 301 MAINLINE PROJECTS OVERVIEW

- **Public Involvement**
  - To be Continued During Construction with Construction Informational Meetings (CIMs)
  - Construction Updates via Website and E-Mails
- **Local Ordinances, Including Noise, Must be Followed**
  - New Castle County
  - Portion of Project within Town of Middletown





# US 301 MAINLINE PROJECTS OVERVIEW

- **Permits**

Department of the Army Individual Permit; CENAP-OP-R-2006-6071-1
Delaware Coastal Management Federal Consistency Certification; FC# 07.037
DNREC Water Quality Certification (Section 3); WQ-276/11
DNREC Water Quality Certification (Section 2); WQ-315/12
DNREC Water Quality Certification (Section 1); WQ-147/12
DNREC Subaqueous Lands Permit (Section 3); SP-233/11
DNREC Subaqueous Lands Permit (Section 2); SP-312/12
DNREC Subaqueous Lands Permit (Section 1); SP-145/12
DNREC Wetland Permit (Section 1); WE-146/12
MDE Nontidal Wetlands and Waterways Permit; 10-NT-0112/201060367
Maryland Reforestation Law Approval; T200811301
MDE E&S Approval; 10-SF-0061
MDE NPDES permit; 10-SF-0061
FEMA Conditional Letter of Map Revision (BR 1-1, 1-2,1-4,1-6,1-7); 13-03-1034R
New Castle County Delaware Floodplain Permit (Section 3); SLD # 2011732
New Castle County Delaware Floodplain Permit (Section 2 – BR 1-508A); SLD # 20120689
New Castle County Delaware Floodplain Permit (Wildlife Culvert and BR1-10); SLD # 20120592

- **Also See Environmental Compliance (EC) Plan Sheets & Environmental Statements**

- **Environmental Monitor**
- **Archaeologist Oversight of Excavations**



# US 301 MAINLINE PROJECTS OVERVIEW

- **EROSION & SEDIMENT CONTROL/STORMWATER MANAGEMENT/CERTIFIED CONSTRUCTION REVIEWERS**
- **Detailed Construction Phasing, MOT & Erosion Control Plans**
- **November 24, 2014 Supplemental Specifications to the August 2001 Standard Specifications**
  - **New DIVISION 900 DEFINITIONS & SECTION 901 – EROSION, SEDIMENT AND STORMWATER MANAGEMENT**
  - **All References may not be updated. The work shall be performed with respect to these Supplemental Specifications and any other updates issued up to the date of advertisement. References in the Contract Documents to the ‘old’ sections or pay items shall be understood to be performed under the new revised section or pay item and the Contractor shall comply with the new specifications at no additional cost to DelDOT.**
  - **Table of Corresponding Old and New Pay Items in the Prospective Bidders Notes.**
  - **Sediment Removal NOT a separate pay item, but is incidental to the E&S Item.**





# US 301 MAINLINE PROJECTS OVERVIEW

- **EROSION & SEDIMENT CONTROL/STORMWATER MANAGEMENT/CERTIFIED CONSTRUCTION REVIEWERS**
- **Certified Construction Reviewer (CCR) Firm**
  - Separate Pre-Construction Meeting
  - Weekly+ Inspections and ES2M Inspection Rating Reports.
  - Contractor's Representative to accompany CCR during inspections.
  - Plan Changes MUST be approved before implementing.
- **New Item 900500-Environmental Performance Incentive (Disincentive)**
  - Fixed Price Identified per Contract.
  - Payment based on ES2M Inspection Rating Report Scores.
- **New Item 900501 - Borrow Area Erosion And Sediment Control And Dewatering**
  - Applicable to Borrow Sources within limits identified on the plans.
  - Turbidity Monitoring at Discharge: Violation of turbidity levels considered a sediment discharge.



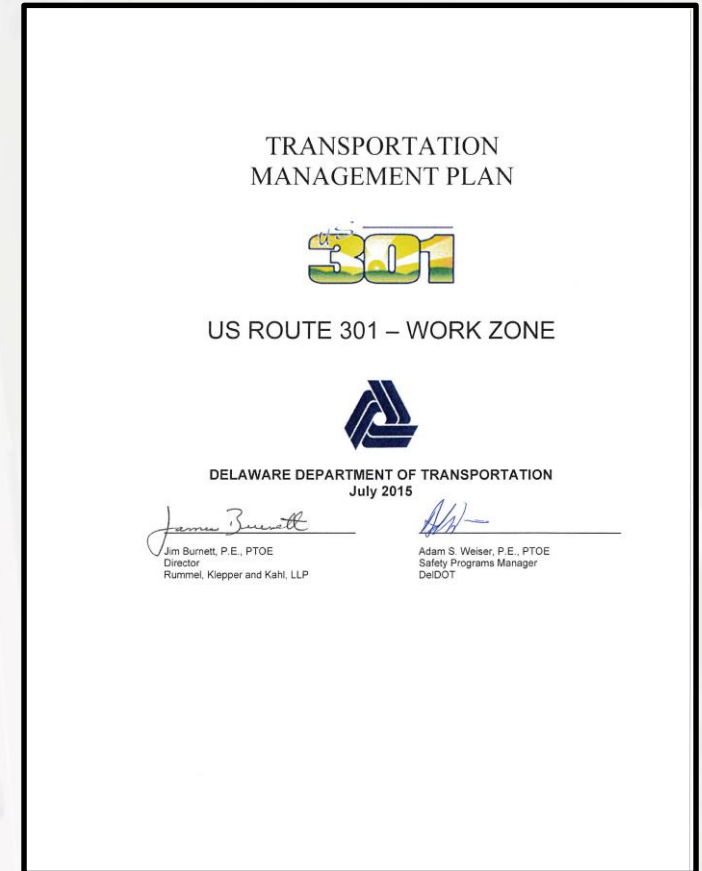
# US 301 MAINLINE PROJECTS OVERVIEW

- **EROSION & SEDIMENT CONTROL/STORMWATER MANAGEMENT/CERTIFIED CONSTRUCTION REVIEWERS**
- **Stormwater Management Facilities**
  - **CCR MUST be Present when certain SWM elements are constructed.**
    - **Advance Schedule Notice**
  - **Infiltration Facilities:**
    - **Initial Excavation Generally to 2' Above Final Grade**
    - **Excavation to Final Grade only after Contributing Area Stabilized**
  - **Excavation under Item 202000 Excavation & Embankment**
  - **As-Built Requirements**



# US 301 MAINLINE PROJECTS OVERVIEW

- **TRAFFIC MANAGEMENT PLAN/MONITOR**
- **A Type B Work Zone Transportation Management Plan (TMP) has been developed for this project which includes all seven of the contracts.**
- **The document includes information such as when lane and road closures are permissible, traffic monitoring requirements, public information requirements, incident management plan(s) for the entire corridor and contact information pertaining to workzone monitoring and incidents occurring within the workzone.**
- **This TMP is a “living document” that is expected to evolve throughout the duration of the project. See the TMP document for details.**



# US 301 MAINLINE PROJECTS OVERVIEW

- **UTILITY RELOCATION STATUS**
- **Majority of Utility Relocations Have Been or Are Expected to be Completed Prior to Anticipated First Chargeable Day.**
- **Some Utility Relocations require work to be completed by road contractor before starting.**
- **Some Utility Relocations Included in Mainline Contracts as Pay Items.**
- **See the Contract's Utility Statement.**





# US 301 MAINLINE PROJECTS OVERVIEW

## Electronic Files:

- Design files, in microstation .dgn format, that contain 3D feature lines for the proposed design.
- 3D feature lines for final proposed top surface elevation only.
- Only used per Machine Control Grading in Item 763501-Construction Engineering.
- Available during the bid period after the electronic file sharing release form has been submitted.





# US 301 MAINLINE PROJECTS OVERVIEW

## US 301 Mainline Contract Numbers

August 2015

STATE CONTRACT NUMBER	PRIMAVERA NO	FEDERAL AID NO.	US 301 CONTRACT REFERENCE	DESCRIPTION
T200811301	08-03015	NH-2015(20)	3	US 301, MARYLAND STATE LINE TO LEVELS ROAD
T200911301	08-03011	NH-2015(21)	1C	US 301, NORFOLK SOUTHERN RR TO SR 896
T200911302	08-03012	NH-2015(22)	1B	US 301 & SR 1 INTERCHANGE
T200911303	08-03013	NH-2015(23)	2A	US 301, LEVELS RD TO SUMMIT BRIDGE ROAD
T200911308	09-45698	NH-2015(24)	1A	US 301, SR 896 TO SR 1
T201011301	10-03020	NH-2015(25)	2B	SUMMIT BRIDGE RD AND ARMSTRONG CORNER RD INTERSECTION IMPROVEMENTS
T201011302	10-03019	NH-2015(26)	1D	US 13 AND PORT PENN RD INTERSECTION

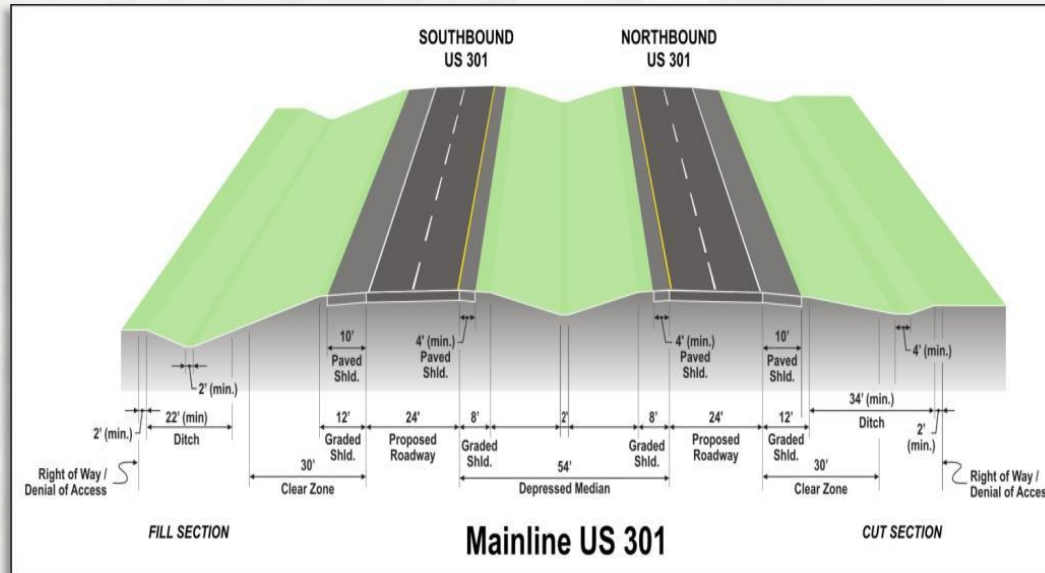
- Contract Limits Interface & Overlap
- Details and Phasing
- Separate Toll Integrator
- Interim Milestones
- Contract 2A Opens Entire Facility







# US 301 MAINLINE PROJECTS OVERVIEW



- **Mainline Typical Section-Lanes and Shoulders**
  - 12" Portland Cement Concrete Pavement
  - 4" Permeable Treated Base
  - 6" Soil Cement Base Course
  - 12" Borrow, Type A Capping
  - In Cut Areas, Existing Subgrade Materials to be Evaluated for In-Place Borrow, Type A
  - 6" Underdrain
  - Pavement Joint Layout Details
  - Update to Section 501
- **Same Pavement Section for Ramps**



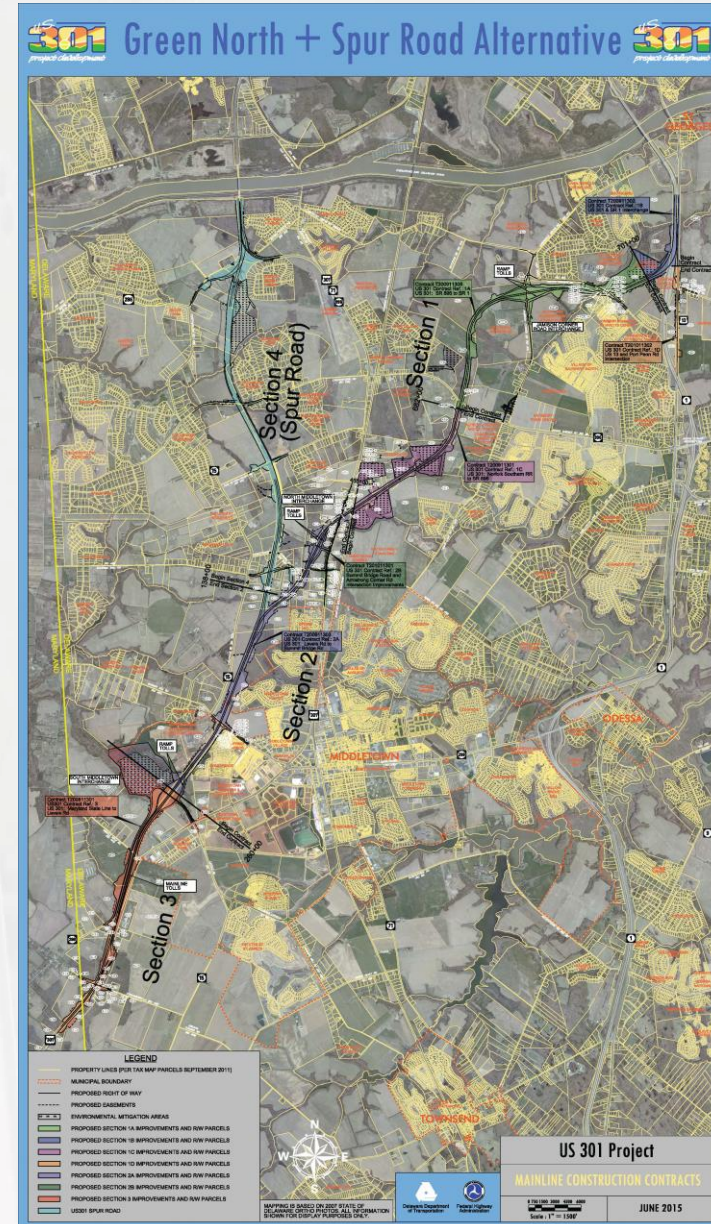
# US 301 MAINLINE PROJECTS OVERVIEW

## ➤ 5+ Million Cubic Yards of Earthwork

- Majority of Material Obtained On-Site
- Roadway, SWM, Pipes, Structures, etc.
- Major Borrow Sources for Contracts 3, 2A, 1C, 1A, & 1B
- Grading Plans and Conditions for Each Source
- Detailed Earthwork Summaries
- Earthwork Related Critical Survey Elements

## ➤ Bridges at 24 Locations

- Large Culverts (Pipes), Box Culverts, Pre-Cast Arch
- Widening of Existing SR1 Bridge over Scott Run
- Steel and Concrete Girders
- Pile Alternatives
  - Dynamic Pile Testing and Signal Matching
- Concrete shrinkage reducing/compensating admixture for Bridge Superstructures & Parapets and Road Barriers
- MSE Wall & Concrete Abutments
- Settlement Monitoring





# US 301 MAINLINE PROJECTS OVERVIEW



## *Computer Animations*

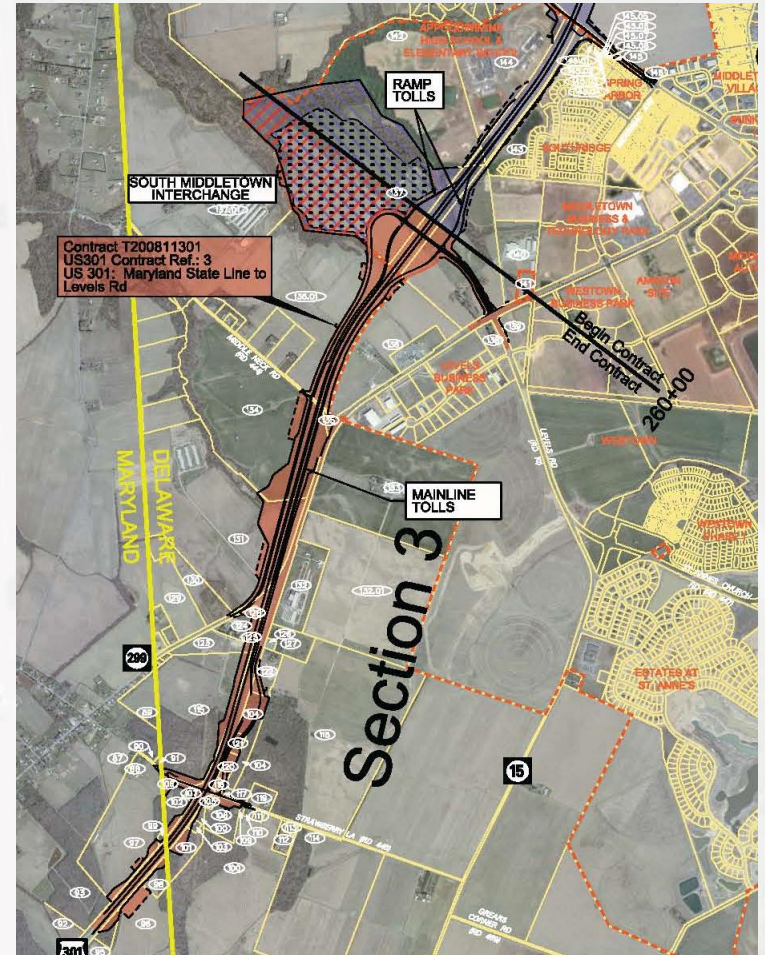
Maryland / Delaware Line to SR1  
South of the C&D Canal  
New Castle County, Delaware





# US 301 MAINLINE PROJECTS OVERVIEW

- **CONTRACT T200811301, US 301, MARYLAND STATE LINE TO LEVELS ROAD (Project Reference Contract 3)**
- **3.7+ Miles Mainline Work**
  - Mill/Overlay US301 in MD
  - New Alignment
- **Ramps to/from Weigh Station**
  - Weigh Station Closed During Construction
  - Weigh-in-Motion (WIM) Items
- **Mainline AET Toll Facilities**
- **Levels Road Interchange-South Serving Ramps**
- **1.1+ Million CY Earthwork**
- **Bituminous Concrete Roads:**
  - Strawberry Lane
  - Middletown-Warwick Road
  - Warwick Road
  - Levels Road
- **Interface with Contract 2A:**
  - Drainage, Embankment, Pavement
  - Temporary Connection to Existing US301

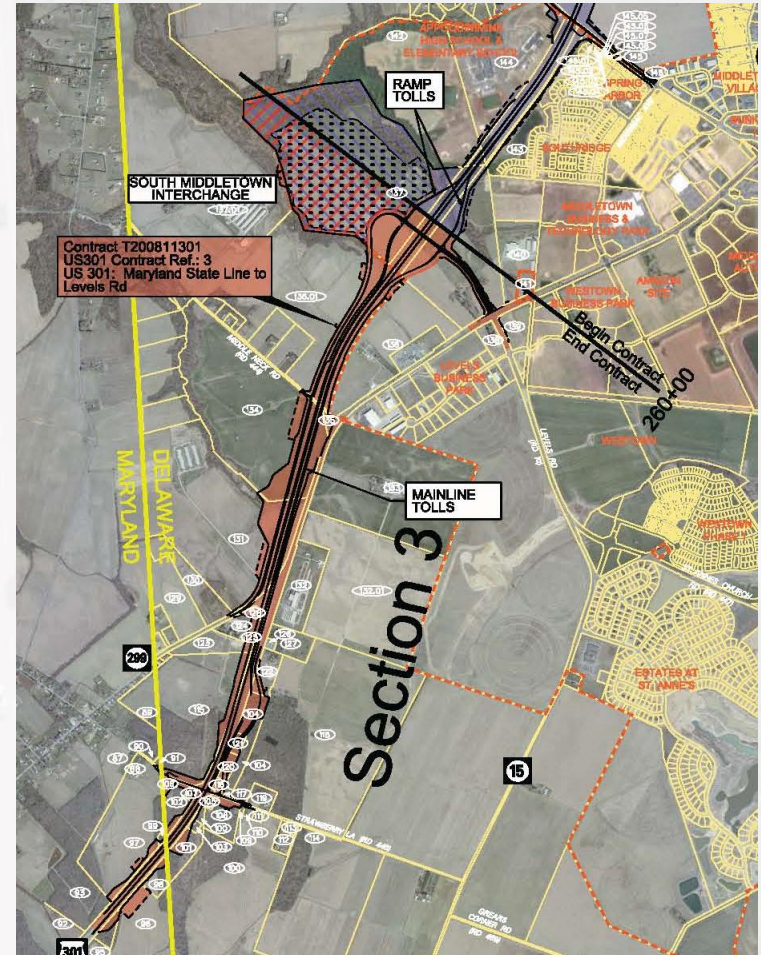


# US 301 MAINLINE PROJECTS OVERVIEW

- **CONTRACT T200811301, US 301, MARYLAND STATE LINE TO LEVELS ROAD (Project Reference Contract 3)**

## ➤ 2 Bridges:

- **Strawberry Lane over US301**
  - 144' Two-Span, Concrete Girders
  - MSE Walls
  - H-Pile and Pipe Pile Alternatives
  - 138kv & 230kv aerial lines
    - No outages
    - 20' Clearance + 20' Blowout
- **Levels Road over US301**
  - 144' Two-Span, Concrete Girders
  - MSE Walls
  - H-Pile and Pipe Pile Alternatives

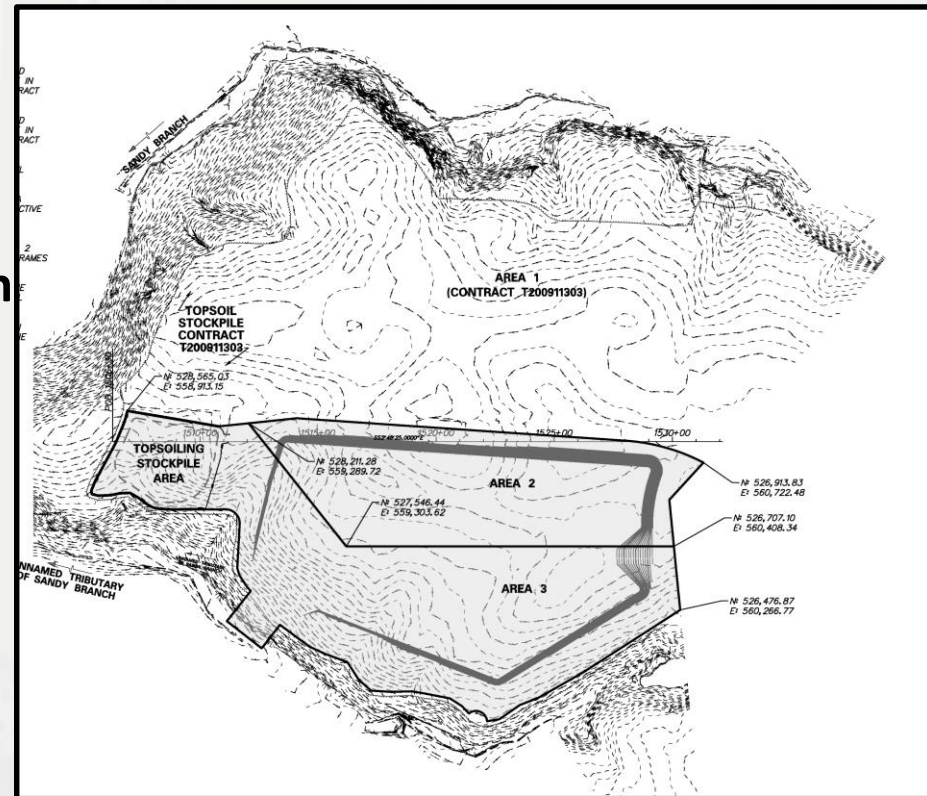




# US 301 MAINLINE PROJECTS OVERVIEW

- **CONTRACT T200811301, US 301, MARYLAND STATE LINE TO LEVELS ROAD (Project Reference Contract 3)**

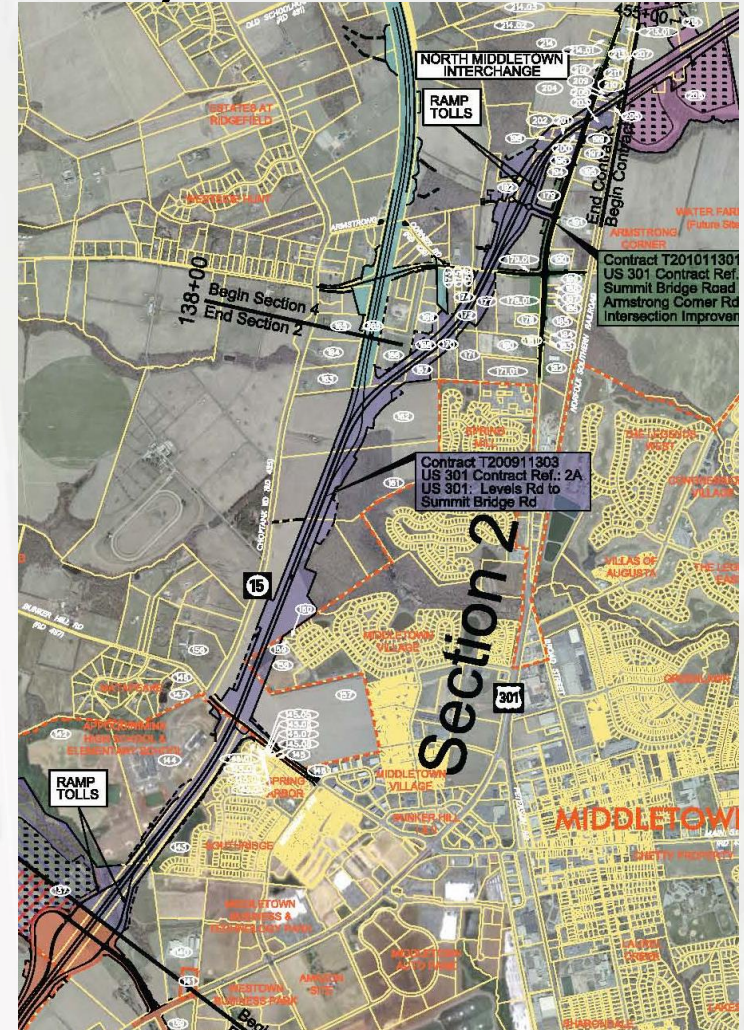
- **Major Borrow Source: Levels Road**
  - **Access to Areas 2 & 3**
  - **Excavation for Embankment Quantity-Not to Final Grades**
  - **Milestones for Completing Work in Each Area**



# US 301 MAINLINE PROJECTS OVERVIEW

- **CONTRACT T200911303, US 301, LEVELS ROAD TO SUMMIT BRIDGE ROAD (Project Reference Contract 2A)**

- **4.5+ Miles Mainline Work: New Alignment**
- **Levels Road Interchange-North Serving Ramps**
- **N. Middletown Interchange**
- **Grading Only for Future Spur Road**
- **Ramp AET Toll Facilities**
- **Bituminous Concrete Roads:**
  - **Bunker Hill Road**
  - **Connector Road/Roundabouts @ Interchange**
  - **Emergency Access Ramp**
  - **Summit Bridge Road Phasing**
- **3.3+ Million CY Earthwork**
- **Berm Construction as Early as Feasible**
- **Direct Interfaces with Contracts 3, 2B, & 1C**
- **Opens US301-Coordination with all other Contracts**







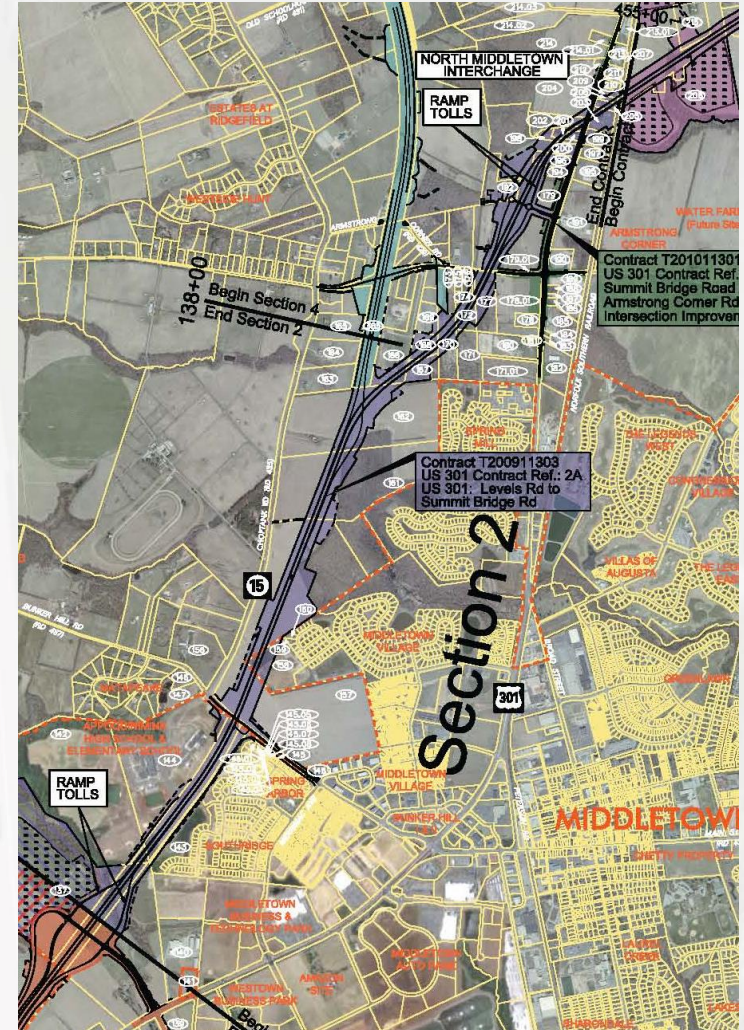


# US 301 MAINLINE PROJECTS OVERVIEW

- **CONTRACT T200911303, US 301, LEVELS ROAD TO SUMMIT BRIGE ROAD (Project Reference Contract 2A)**

## ➤ Bridges at 10 Locations

- **US301 over Armstrong Corner Road**
  - 90'-6" Single Span, Concrete Girders
  - MSE Walls
  - Precast Concrete & Cast-in-Place Concrete Pile Alternatives
  - Hauling Coordination
- **Bunker Hill Road over US301**
  - 146' Two-Span, Concrete Girders
  - MSE Walls
  - Precast Concrete Piles
  - Temporary Run Around Road
  - Maintain Vehicle, Pedestrian and Bike Traffic



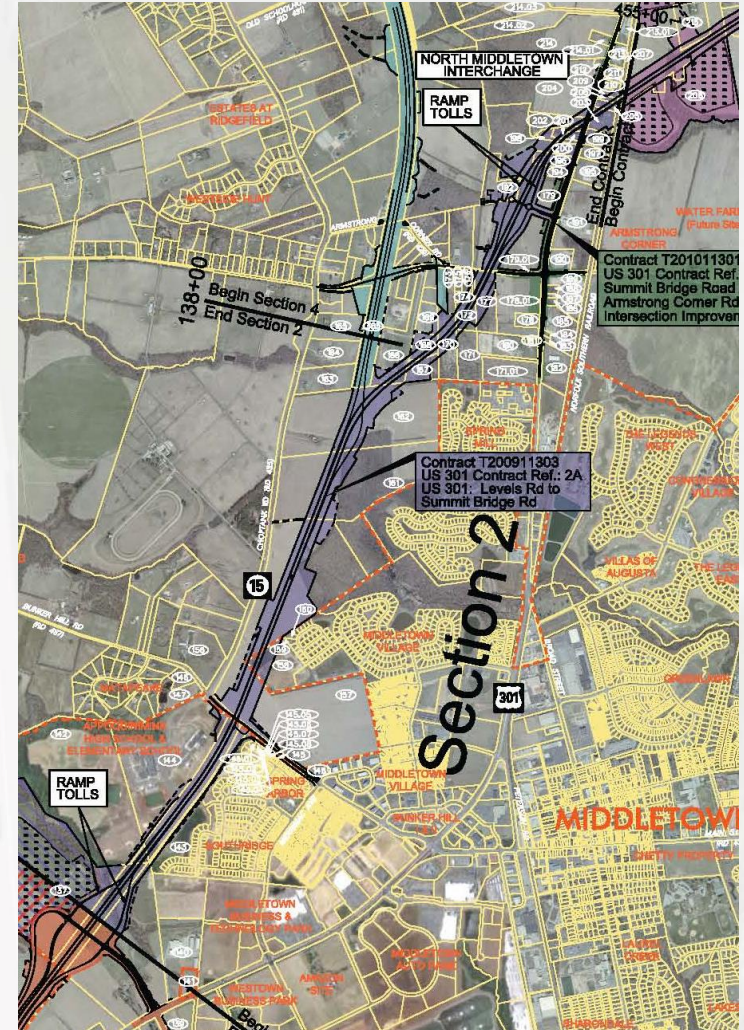


# US 301 MAINLINE PROJECTS OVERVIEW

- **CONTRACT T200911303, US 301, LEVELS ROAD TO SUMMIT BRIGE ROAD (Project Reference Contract 2A)**

## ➤ Bridges at 10 Locations

- **US301 over Tributary Sandy Branch**
  - 145' Single Span SB, 201' Two Span NB
  - Concrete Girders
  - Concrete Walls
  - Precast Concrete Piles
  - Maintenance of Stream Flow
- **Ramp F over Sandy Branch**
  - 135' Single Span
  - Concrete Girders
  - Concrete Walls
  - Precast Concrete & Cast-in-Place Concrete Pile Alternatives
  - Maintenance of Stream Flow



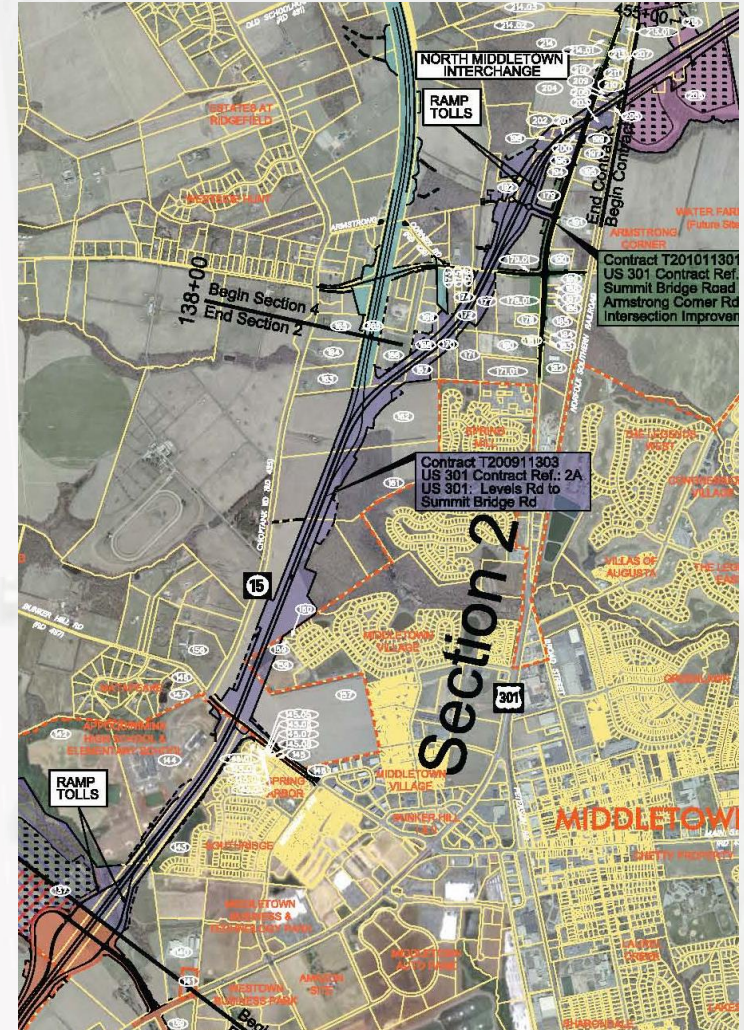


# US 301 MAINLINE PROJECTS OVERVIEW

- **CONTRACT T200911303, US 301, LEVELS ROAD TO SUMMIT BRIGE ROAD (Project Reference Contract 2A)**

## ➤ Bridges at 10 Locations

- **US301 over Sandy Branch**
  - 200' Two Span SB, 250' Two Span NB
  - Concrete Girders
  - Concrete Walls
  - Precast Concrete and Cast-in-Place Concrete Pile Alternatives
  - Maintenance of Stream Flow
- **US301 over Connector Road**
  - At N. Middletown Interchange
  - 117' Single Span
  - Concrete Girders
  - MSE Walls
  - H Piles



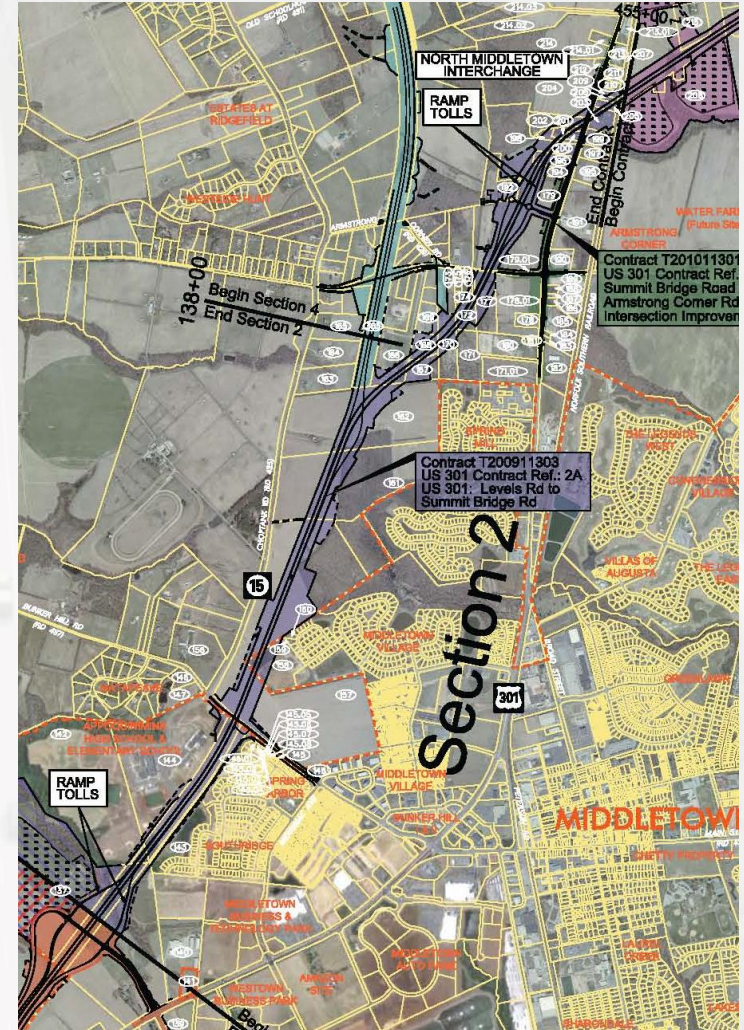


# US 301 MAINLINE PROJECTS OVERVIEW

- **CONTRACT T200911303, US 301, LEVELS ROAD TO SUMMIT BRIGE ROAD (Project Reference Contract 2A)**

## ➤ **Bridges at 10 Locations**

- **US301 over Drawyers Ditch**
  - **12' x 6' Box Culvert, 507'-6" Long**
  - **Off of Existing Stream Alignment**
  - **Phasing Across Summit Bridge Road**
  - **Channel Bed Fill**
- **Ramp C over Sandy Branch**
  - **Precast Concrete Arch, 42' Span**
  - **Maintenance of Stream Flow**

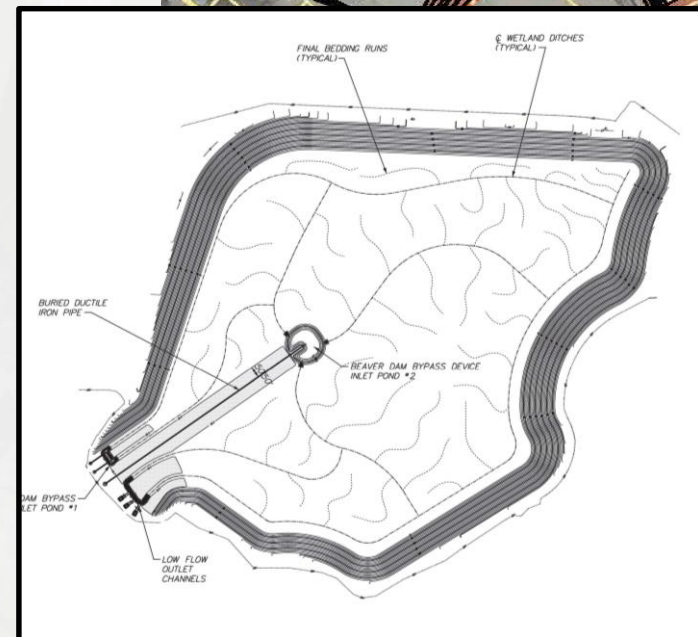
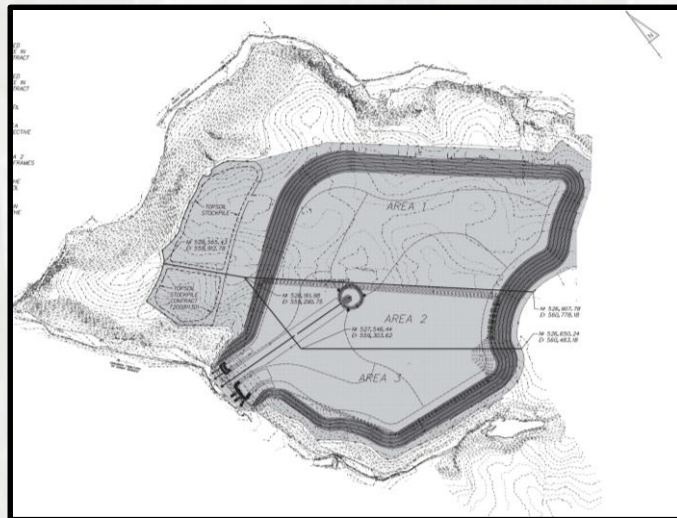
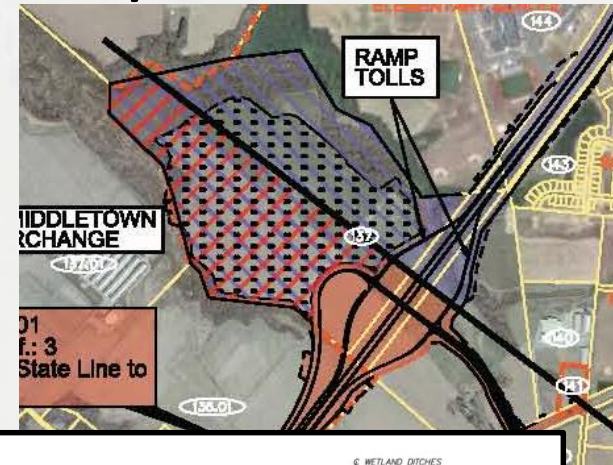


# US 301 MAINLINE PROJECTS OVERVIEW

- **CONTRACT T200911303, US 301, LEVELS ROAD TO SUMMIT BRIGE ROAD (Project Reference Contract 2A)**

## ➤ Major Borrow Source: Levels Road

- Initial Access to Area 1
- Access to Areas 2 & 3 Per Milestones
- Some Flexibility on Final Side Slope Rates
- As-Built Surveys
- Excess Excavation to Spur Road Stockpile Area

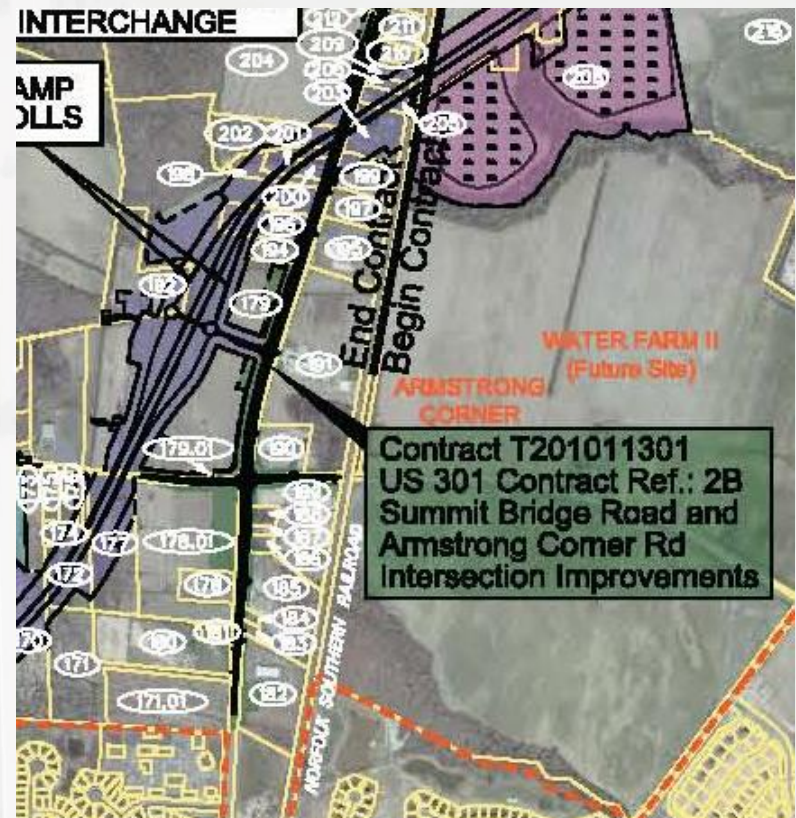




# US 301 MAINLINE PROJECTS OVERVIEW

- **CONTRACT T201011301, SUMMIT BRIDGE RD & ARMSTRONG CORNER RD INTERSECTION IMPROVEMENTS**  
**(Project Reference Contract 2B)**

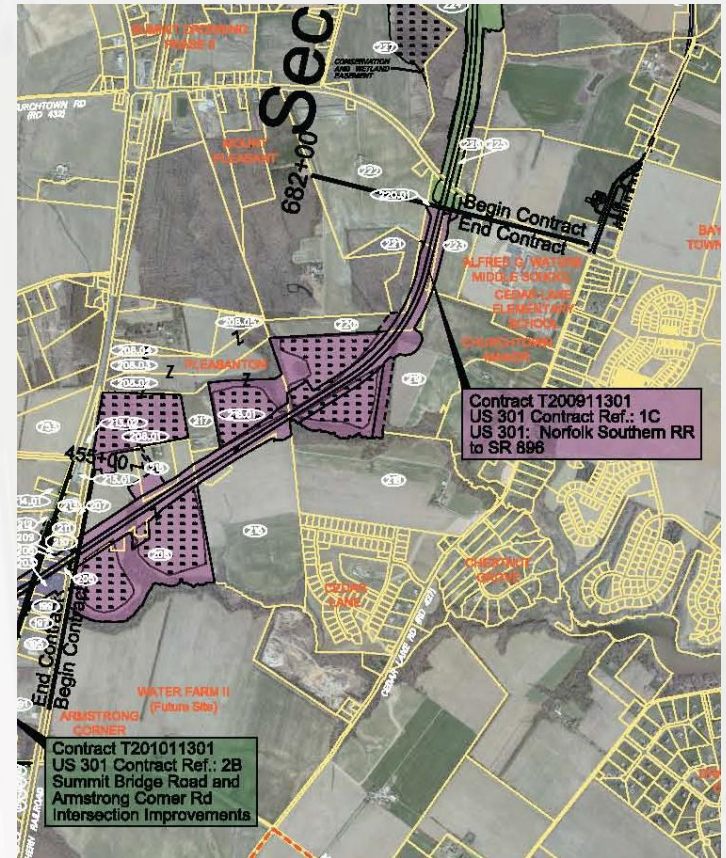
- Dualization of Summit Bridge Road
- Widening of Armstrong Corner Road and Marl Pit Road
- Intersection with New Connector Road to N. Middletown Interchange
- Direct Interface with Contract 2A



# US 301 MAINLINE PROJECTS OVERVIEW

- **CONTRACT T200911301, US 301, NORFOLK SOUTHERN RR TO SR896 (Project Reference Contract 1C)**

- **1.8+ Miles Mainline Work: New Alignment**
- **Access from SR896**
- **Direct Interfaces with Contracts 3 & 1A**
- **875,000+ CY Earthwork**
- **5 Major Borrow Sources**
  - **Pleasanton South**
  - **Pleasanton South East**
  - **Pleasanton East**
  - **Churchtown Manor North**
  - **Churchtown Manor South**
  - **Grading Plans & Requirements for Each**

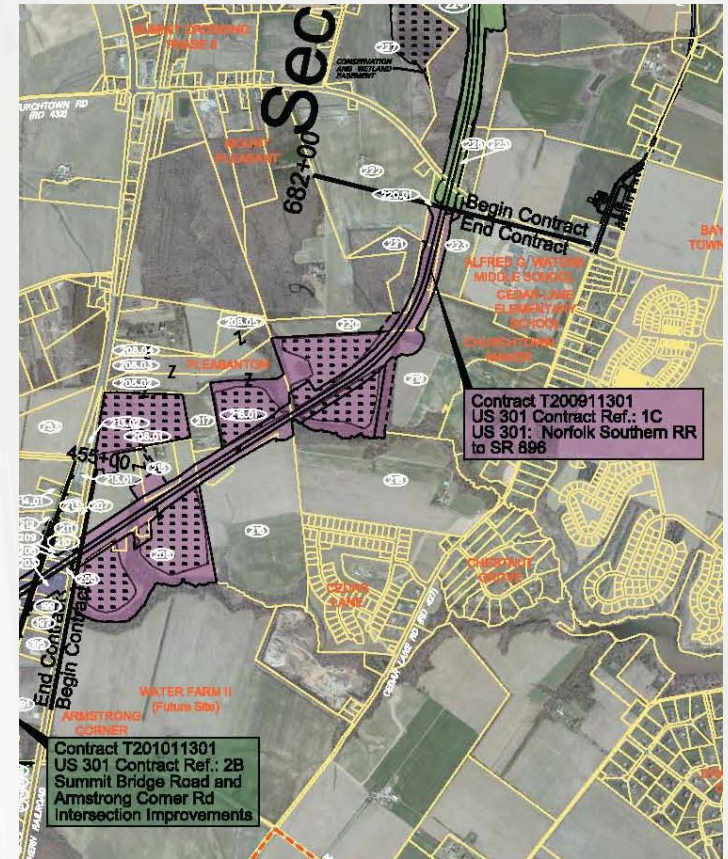




# US 301 MAINLINE PROJECTS OVERVIEW

- **CONTRACT T200911301, US 301, NORFOLK SOUTHERN RR TO SR896 (Project Reference Contract 1C)**

- **1.8+ Miles Mainline Work: New Alignment**
- **Access from SR896**
- **Direct Interfaces with Contracts 3 & 1A**
- **875,000+ CY Earthwork**
- **5 Major Borrow Sources**
  - **Pleasanton South**
  - **Pleasanton South East**
  - **Pleasanton East**
  - **Churchtown Manor North**
  - **Churchtown Manor South**
  - **Grading Plans & Requirements for Each**

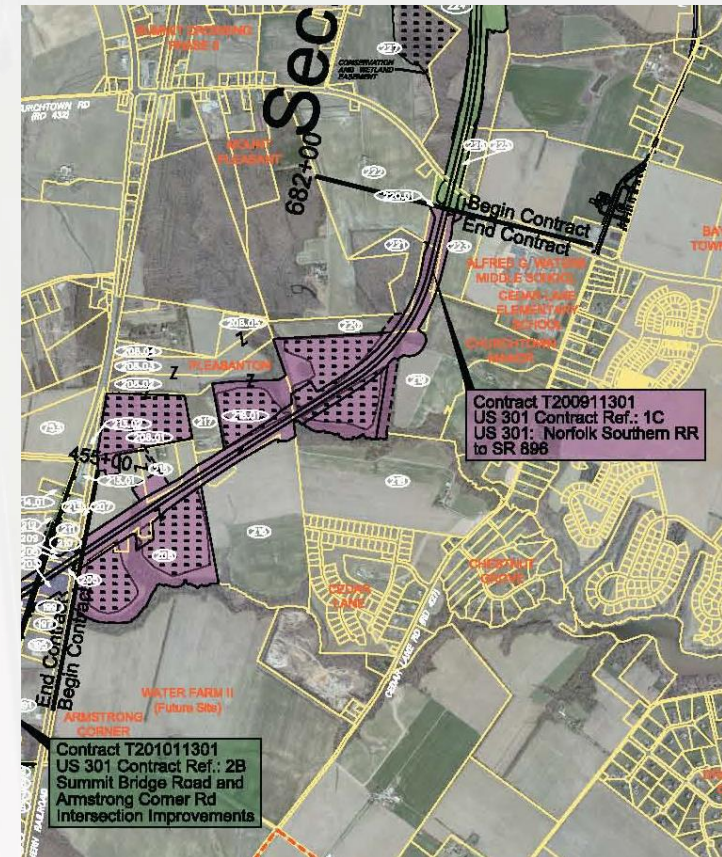


# US 301 MAINLINE PROJECTS OVERVIEW

- **CONTRACT T200911301, US 301, NORFOLK SOUTHERN RR TO SR896 (Project Reference Contract 1C)**

## ➤ Bridges at 3 Locations

- **US301 over Tributary to Drawyer Creek**
  - Dual Pipes: 53"x83" & 38"x60" RCEP
  - Each 190' Long
  - Concrete Outlet Walls
  - Off of Existing Stream Alignment
  - Channel Bed Fill
- **US301 over Drawyer Creek**
  - 140' Single Span, Concrete Girders
  - MSE Wing Walls, Concrete Abutment Walls
  - Temporary Surcharge
  - H and Precast Concrete Pile Alternatives
- **US301 over Norfolk Southern Railroad**
  - North Embankment, MSE Walls and Pile Casings
  - Maintenance of Railroad Traffic
  - Milestones: Completion and 2A Access

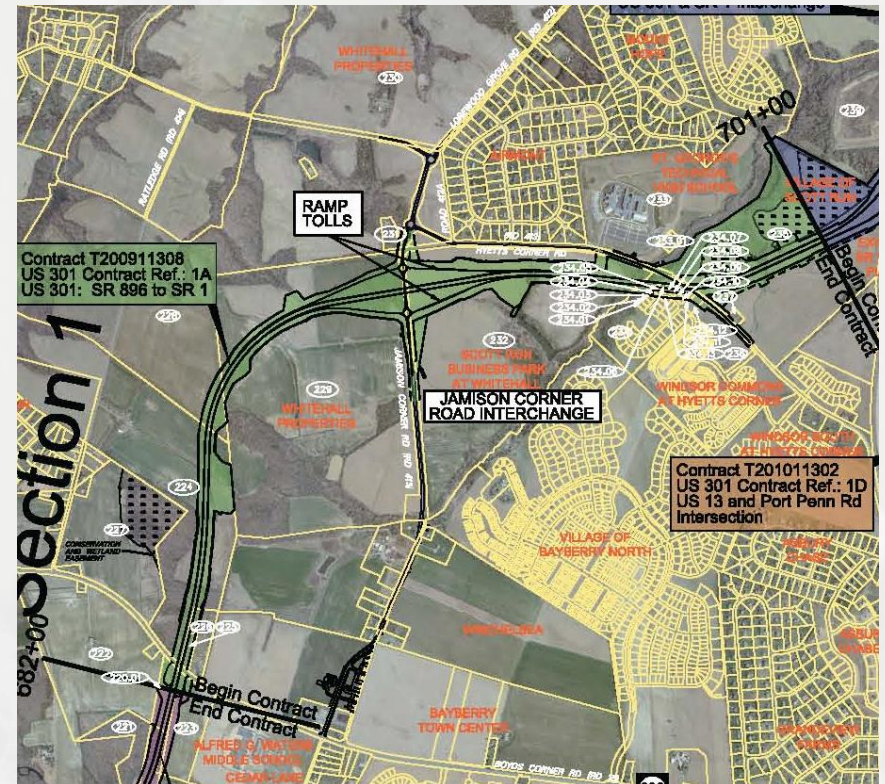




# US 301 MAINLINE PROJECTS OVERVIEW

- **CONTRACT T200911308, US 301, SR896 TO SR1 (Project Reference Contract 1A)**

- **3.4+ Miles Mainline Work: New Alignment**
- **Jamison Corner Road Interchange with Roundabouts**
- **AET Ramp Toll Facilities**
- **Bituminous Concrete Roads:**
  - **Jamison Corner Road**
  - **Jamison Corner Road Temporary Run-Around**
  - **Hyetts Corner Road**
  - **Emergency Access Ramps**
- **Stream Restoration at Scott Run**
- **Direct Interfaces with Contracts 1C & 1B**

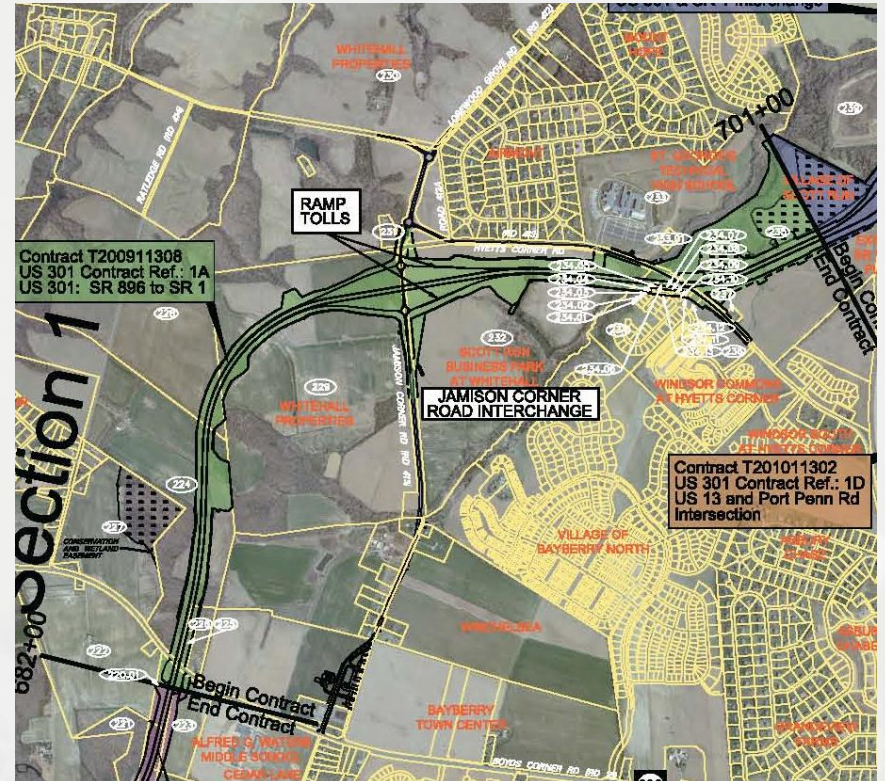




# US 301 MAINLINE PROJECTS OVERVIEW

- **CONTRACT T200911308, US 301, SR896 TO SR1 (Project Reference Contract 1A)**

- **Utility Corridor at Hyetts Corner Road Area**
  - Various Utility Pay Items
- **1.6+ Million CY Earthwork**
- **Berm Construction as Early as Feasible**
- **3 Major Borrow Sources**
  - Village of Scott Run West
  - Village of Scott Run East
  - Hyetts Corner LLC
  - Grading Plans & Requirements
  - Contract 1B Access to Borrow Source
- **Direct Interfaces with Contracts 1C & 1B**
- **Milestone to Complete US301 to Open to Traffic**

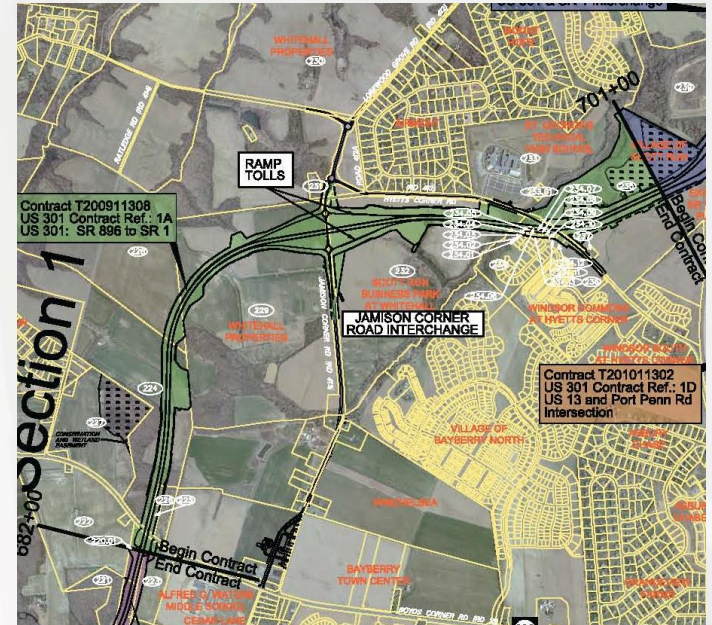


# US 301 MAINLINE PROJECTS OVERVIEW

- **CONTRACT T200911308, US 301, SR896 TO SR1 (Project Reference Contract 1A)**

## ➤ **Bridges at 7 Locations**

- **US301 over Unnamed Tributary Scott Run**
  - **Precast Concrete Arch, 60' Span**
  - **Maintenance of Stream Flow**
  - **Channel Bed Fill**
- **Hyetts Corner Road over US301**
  - **287' Two Span, Steel Girders**
  - **MSE Walls**
  - **H and Precast Concrete Pile Alternatives**
- **Hyetts Corner Road over Scott Run**
  - **246' Two Span, Concrete Girders**
  - **MSE Walls**
  - **H and Precast Concrete Pile Alternatives**
  - **Maintenance of Stream Flow**



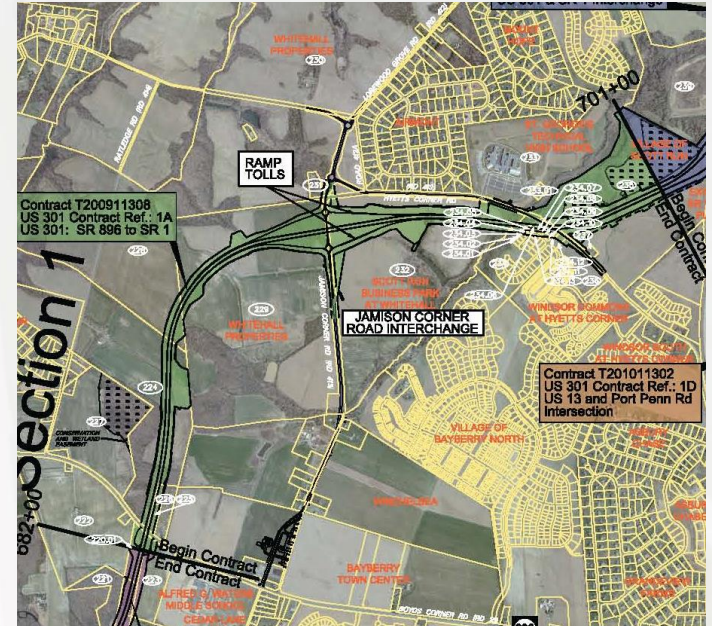


# US 301 MAINLINE PROJECTS OVERVIEW

- **CONTRACT T200911308, US 301, SR896 TO SR1 (Project Reference Contract 1A)**

## ➤ **Bridges at 7 Locations**

- **US301 over Scott Run**
  - 398' NB & 382' SB Two Span
  - Steel Girders, MSE Walls
  - H and Precast Concrete Pile Alternatives
- **Jamison Corner Road over US301**
  - 145' Single Span, Steel Girders
  - MSE Walls
  - H and Precast Concrete Pile Alternatives
- **US301 over SR896**
  - 120' Single Span, Concrete Girders
  - MSE Walls
  - H and Precast Concrete Pile Alternatives
- **US301 Wildlife Culvert**
  - Precast Concrete Culvert, Open Bottom, Cast-in-Place Foundations
  - Inside Dimensions 23'W x 17'+H
  - 160'-6" Long



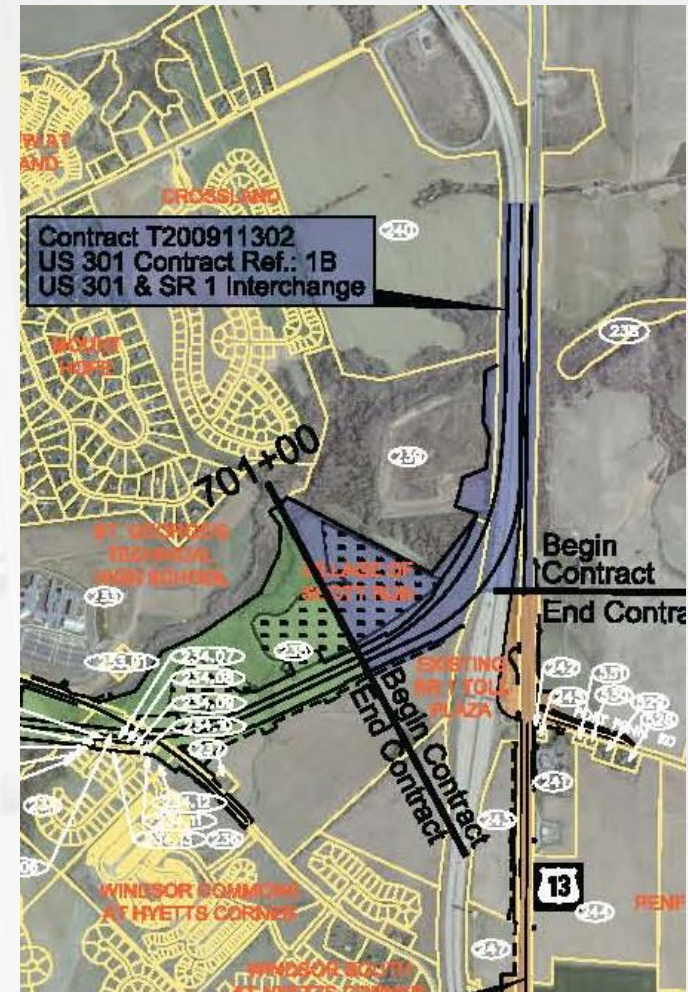




# US 301 MAINLINE PROJECTS OVERVIEW

- **CONTRACT T200911302, US 301 And SR 1 interchange  
(Project Reference Contract 1B)**

- NB & SB Ramps to SR 1
- Bituminous Concrete Roads:
  - US 13
- MSE Walls along NB Ramp
- Barrier Walls up to 8' in Height at Bridge Piers
- Lane Closure/Detour Restrictions
- Migratory Bird Restrictions
  - Applicable to Both Bridges over Scott Run
- Direct Interfaces with Contracts 1A & 1D
- 227,000+CY Earthwork
- 1 Major Borrow Source
  - Village of Scott Run East
  - Haul Road at Hyetts Corner Road adjacent to Contract 1A



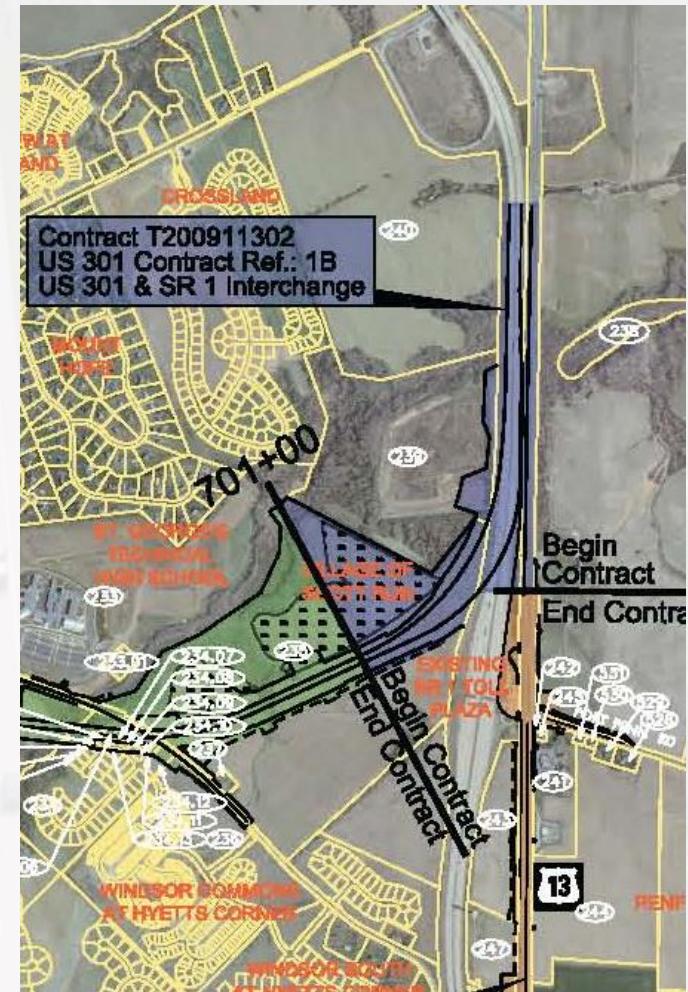


# US 301 MAINLINE PROJECTS OVERVIEW

- **CONTRACT T200911302, US 301 And SR 1 interchange  
(Project Reference Contract 1B)**

## ➤ **Bridges at 3 Locations**

- **SR1 Southbound Bridge over Scott Run**
  - Widening of Existing Bridge
  - 128', Two Span, Concrete Girders
  - Concrete Abutment Walls
  - H Piles Only
- **US301 Northbound over Scott Run**
  - New Bridge
  - 128', Single Span, Concrete Girders
  - Concrete Abutment Walls
  - H Piles Only

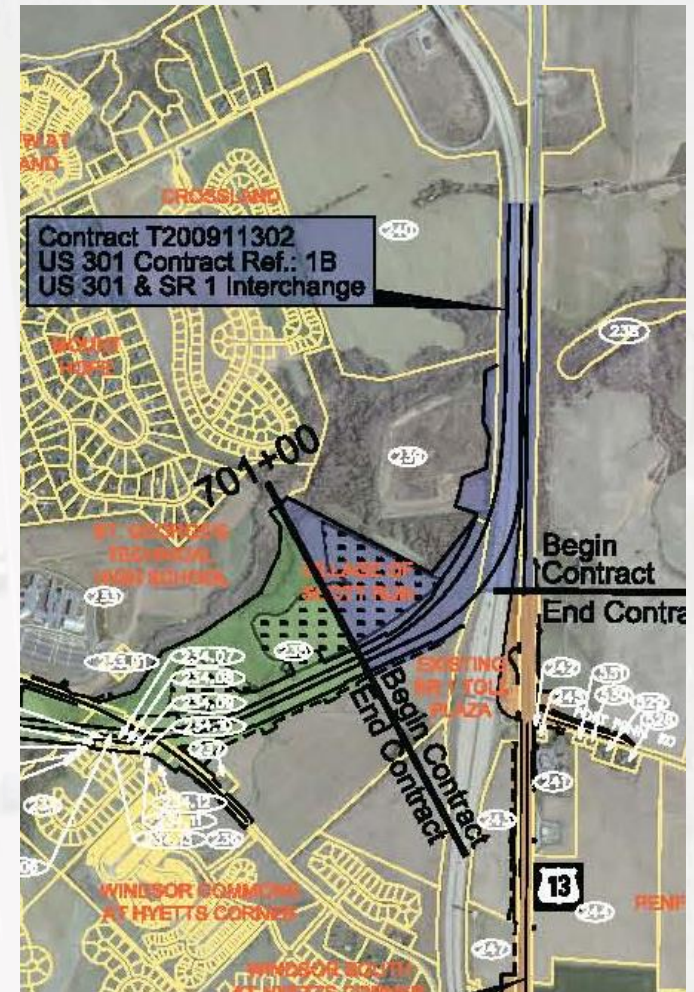


# US 301 MAINLINE PROJECTS OVERVIEW

- **CONTRACT T200911302, US 301 And SR 1 interchange**  
**(Project Reference Contract 1B)**

## ➤ **Bridges at 3 Locations**

- **US301 over SR1**
  - 695', 4-Span, Curved
  - PCC Post Tensioned Pier Caps, 8,000 PSI
    - 1 over SB SR1, 1 over NB SR1
  - Steel and High Performance Steel
  - MSE Walls





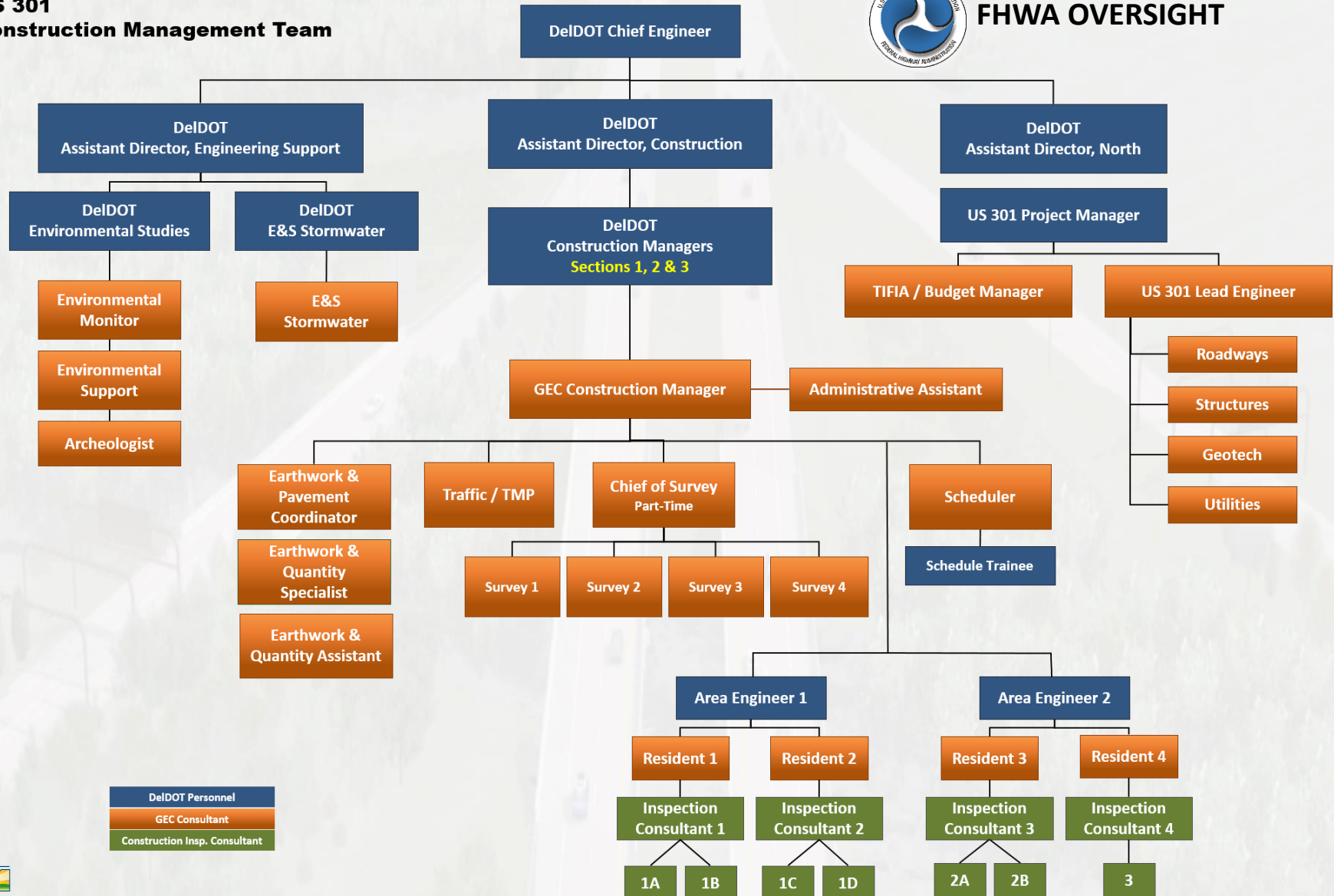


# CONSTRUCTION ADMINISTRATION

**US 301  
Construction Management Team**



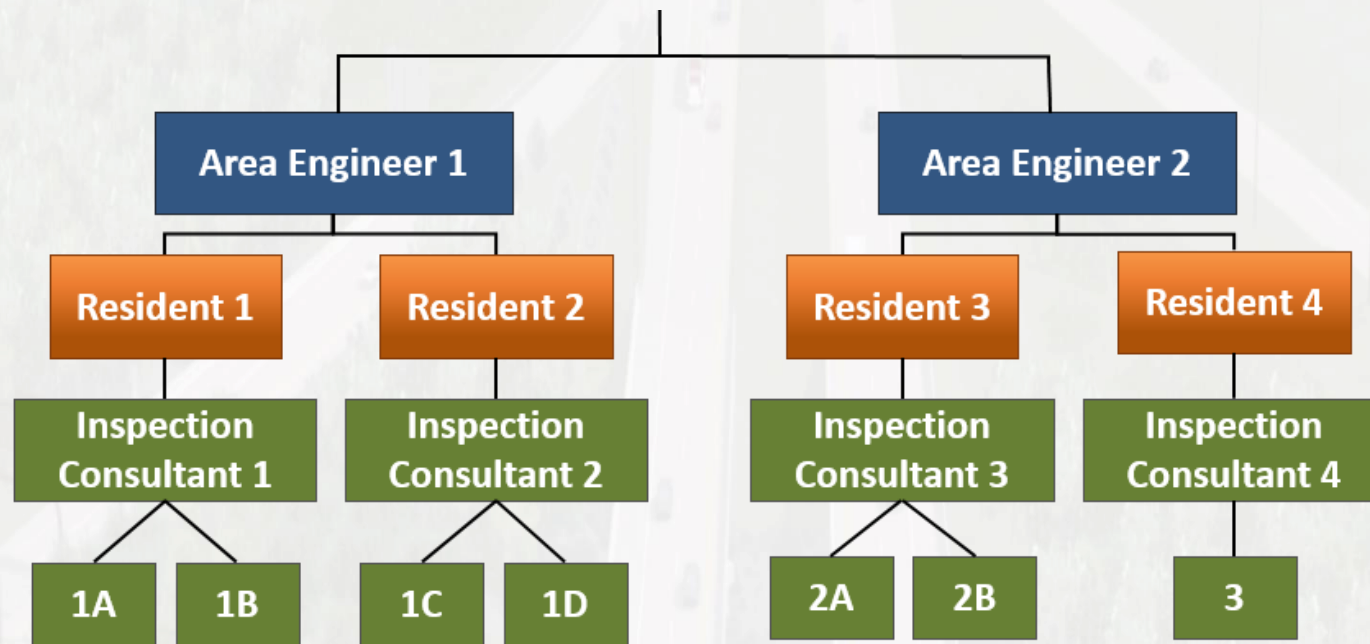
**FHWA OVERSIGHT**





# CONSTRUCTION ADMINISTRATION

- **CONSTRUCTION INSPECTION APPROACH:**



# CONSTRUCTION ADMINISTRATION

- **PUBLIC CONSTRUCTION INFORMATION MEETINGS:**
  - As the US 301 project moves to the construction phase, it is important that the extensive proactive public outreach that has been a significant part of the project from inception continue. Therefore, the project team will conduct periodic public Construction Informational Meetings (CIMs) from the potential start of construction through the completion of construction.
  - **CHECK PROSPECTIVE BIDDERS NOTES FOR:**

The Contractor shall make available at least one employee to attend and represent the firm at all scheduled job progress meetings, project working group meetings or other public informational meetings as requested by the Engineer. The person attending shall be knowledgeable of current job progress, the anticipated construction schedule and any ongoing or potential construction or contract issues. Costs are incidental to Item 743000-Maintenance of Traffic.



# CONSTRUCTION ADMINISTRATION

- **PROJECT AUDITS:**

**AUDITS WILL BE PERFORMED DURING CONSTRUCTION.**

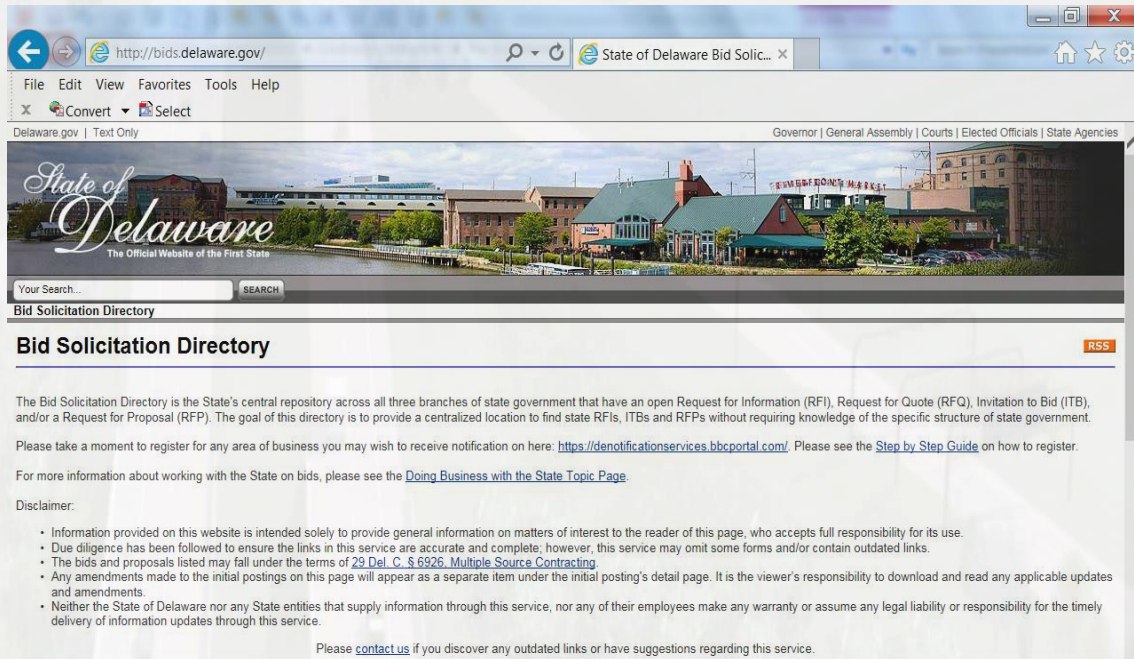
**PHILLIP (PJ) HENRY**  
**DELDOT FINANCE SECTION**  
**302-760-2059**  
[Phillip.Henry@state.de.us](mailto:Phillip.Henry@state.de.us)



# CONTRACTUAL ISSUES

- OFFICIAL ADVERTISEMENT FOR BIDS: <http://bids.delaware.gov/>

**BIDDERS MUST BE REGISTERED with DeIDOT and request a cd of the official plans and specifications in order to submit a bid. Contact DeIDOT at dot-ask@state.de.us, or (302) 760-2031.**



[Recently Closed Solicitations](#) | [Solicitations Not Awarded](#) | [Awarded Contracts](#) | [Archived Contracts](#)

Ad Date	Agency (Agency Acronyms)	UNSPSC (UNSPSC Information)	Contract Title/Description	Deadline Date
8/19/2015	GSS	5019	<a href="#">Ice Cream</a>	9/4/2015
8/19/2015	DOT	8017	<a href="#">Dart First State's Rideshare Delaware Program (Consulting Services)</a>	9/16/2015
8/18/2015	JUD	8012	<a href="#">Special Legal Counsel</a>	8/21/2015
8/18/2015	GSS	2510	<a href="#">Trucks and Vans - Model Year 2016 or Later</a>	9/15/2015
8/17/2015	GSS	5310	<a href="#">Apparel Blanks (DCI)</a>	9/9/2015
8/17/2015	DOT	7214	<a href="#">Old Lancaster Pike Pedestrian Bridge Placement</a>	9/15/2015





# CONTRACTUAL ISSUES

- **DBE/TRAINEE REQUIREMENTS:**
  - **DBE GOALS ESTABLISHED FOR EACH CONTRACT.**
  - **DELDOT DBE PROGRAM INFO:**

<http://www.deldot.gov/information/business/dbe/index.shtml>

**PLEASE NOTE** federal requirements for the DBE program under 49CFR §26.53(b)(3)(i)(B) have changed effective November 3, 2014. Submission of DBE participation information is now required from the lowest apparent bidder no later than **seven (7) days** after bid opening (formerly 10 days).

**Ramon O. Ceballos, Jr.**  
**DBE Program Manager**  
**302-760-2035**

[ramon.cebaldos@state.de.us](mailto:ramon.cebaldos@state.de.us)



**State of Delaware**  
The Official Website of the First State

**Delaware Department of Transportation**

**Home**  
About DeIDOT  
Secretary Message  
Press Releases  
Divisions  
FAQs  
Employment  
Public Workshops  
Related Links  
DMV  
DART  
EZPass  
Contact Information  
Office Locations

**Services +**

**Information +**

**Visit Us**

**Featured**

**Doing Business with DeIDOT**  
**Disadvantaged Business Enterprise (DBE) Program**  
Welcome to the DeIDOT Disadvantaged Business Enterprise (DBE) Program

**DeIDOT program gives minority-owned businesses a fighting chance at contracts**  
[Dover Post Article: September 17, 2014](#)  
Ramon O. Ceballos, DBE Program Manager

The US Department of Transportation (USDOT) DBE regulations require recipients of federal financial assistance to establish goals for the participation of disadvantaged businesses. The regulations also require states to certify the eligibility of DBE firms to participate in their USDOT-assisted contracts. DeIDOT evaluates each of their USDOT-assisted contracts and establishes contract specific DBE goals to ensure nondiscrimination in federally-assisted projects.

**INFORMATION**  
Civil Rights Home  
DBE Home  
Application  
Contact Us  
DBE Directory  
Information and Events  
Federal Regulations  
Forms and Publications  
Related Links  
  
Calendar

# CONTRACTUAL ISSUES

- **DBE/TRAINEE REQUIREMENTS:**

- **ITEM 763503-TRAINEE: See Bid Proposals for Hours.**

**PROPOSED TRAINEE PLANS as required. Number of required programs is listed in the Training Special Provisions within Contract General Notices. The program(s) must be submitted within 10 Calendar Days of notification of apparent low bidder status. Contract Award will not take place until acceptable On-the-Job (OJT) program plans are received by the Civil Rights Group of the Department.**

**Failure of the apparent low bidder to present copies of an acceptable OJT Trainee Programs within ten (10) calendar days of notification of apparent low bidder status, shall create a rebuttable presumption that the bid is not responsive.**





# CONTRACTUAL ISSUES

- **CRAFT TRAINING PREQUALIFICATION:**

- **PER TITLE 29 OF THE DELAWARE CODE, CHAPTER 6962 (c)(11):**

**As a prequalification to submit a bid on the US 301 project, all contractors and subcontractors must certify that their company, either independently or through agreement with other organizations, is providing craft training for journeyman and apprentice levels through a bona fide program approved by and registered with the State of Delaware and/or United States Department of Labor, to comply with 29 Del C. 6962(c)(11). A form is provided that will be required to be submitted with any bid for the US 301 project along with program documentation. A Delaware Business License is not needed as part of the pre-qualification to bid. A Delaware Business License will be required as part of the contract award and execution process.**



# CONTRACTUAL ISSUES

- **CRAFT TRAINING PREQUALIFICATION:**
  - **Existing Programs Approved in Delaware or Other States Acceptable—do not need to contact Delaware Department of Labor (DDOL)**
  - **Steps to Establish a Bona Fide Apprenticeship & Training Program**
    1. **Submit the Sponsor Application Form and Worker's Compensation info to the Delaware Department of Labor**
      - **Note: A Delaware Business License is not required to submit the application**
    2. **Execute the Standards of Agreement with DDOL**
    3. **Receive the Certificate of Registration from DDOL**
  - ✓ **In order to prequalify for bidding, the prime contractor will submit their Prequalification Form and Certificate of Registration and their subcontractors' Prequalification Forms and Certificates of Registration as part of the bid.**





# CONTRACTUAL ISSUES

- **CRAFT TRAINING PREQUALIFICATION:**

- **APPRENTICESHIP PROGRAM INFO:**

**Delaware Department of Labor, Division of Industrial Affairs,  
Office of Labor Law Enforcement:**

<http://dia.delawareworks.com/labor-law/apprenticeship-and-training.php>

**KEVIN CALIO  
DELAWARE DEPARTMENT OF LABOR  
302-451-3419**

[Kevin.Calio@state.de.us](mailto:Kevin.Calio@state.de.us)

**225 Corporate Blvd.  
Newark, DE 19702**



# CONTRACTUAL ISSUES

- **CRAFT TRAINING PREQUALIFICATION:**

- **PREQUALIFICATION FORM**

The form is required to be submitted with any bid for the US 301 project along with program documentation for the Contractor and all Subcontractors.

**Prequalification for US 301 Contracts**

I certify that \_\_\_\_\_,  
Contractor/Subcontractor Company

either independently or through agreement with other organizations, is providing craft training for journeyman and apprentice levels through a bona fide program approved by and registered with the State of Delaware and/or United States Department of Labor, to comply with 29 Del C. 6962(c)(11).  
Enclosed is a copy of the certification of this program.

Printed Name: \_\_\_\_\_

Signature: \_\_\_\_\_

Title: \_\_\_\_\_

Date: \_\_\_\_\_



# CONTRACTUAL ISSUES

- **CRAFT TRAINING PROGRAM:**

- **Clarification of Delaware Office Requirement:**

- This requirement (in Section 3.1 of the Rules & Regulations Relating to Delaware Apprenticeship and Training Law – under “Registrant or Sponsor”) is legally non-enforceable as a result of the decision in *Tri-M Group, LLC v. Sharp*, 638 F.3d 406 (3<sup>rd</sup> Cir. 2011). A proposed amendment to this regulation has been drafted in response to the Court’s decision and will soon be promulgated.

- **Craft Training Vs. Trainee Requirements**



# CONTRACTUAL ISSUES

- **MARYLAND WAGE RATES:**
  - CONTRACT T200811301, US 301, MARYLAND STATE LINE TO LEVELS ROAD ONLY.
  - APPLICABLE TO ITEMS IN CATEGORY 009 OF THE BID PROPOSAL.
- **BID OPTIONS FOR PILE ALTERNATIVES:**
  - BID PROPOSAL CATEGORY FOR ROAD CONSTRUCTION ITEMS AND THEN SEPARATE CATERGORIES FOR ITEMS ASSOCIATED WITH INDIVIDUAL BRIDGES.
  - MOST OF THE PILE SUPPORTED BRIDGES HAVE OPTIONS TO BID ON ONE OF TWO DIFFERENT PILE TYPES UNDER PILE ALTERNATIVES.
  - ONLY SUBMIT BID FOR ONE PILE ALTERNATIVE UNDER EACH BRIDGE.
- **BREAKOUT SHEETS:**
  - SOME ITEMS REQUIRE SEPARATE BREAKOUT SHEETS PER THE ITEM'S SPECIAL PROVISION.
  - BREAKOUT SHEETS MUST BE SUBMITTED EITHER WITH YOUR BID DOCUMENTS; OR WITHIN SEVEN (7) CALENDAR DAYS FOLLOWING THE BID DUE DATE BY THE LOWEST APPARENT BIDDER. REFER TO INSTRUCTIONS ADJACENT TO THE BREAKOUT SHEETS IN THE BID PROPOSAL DOCUMENT.





# CONTRACTUAL ISSUES

- **ESCROW OF BID DOCUMENTS:**

- CHECK PROSPECTIVE BIDDERS NOTES FOR:

The Contractor shall submit to the Department legible copies of the Bid Documentation as set forth in Section 103.09 Escrow of Bid Documentation.

*(Note that Section 103.09 updated in the November 24, 2014 Supplemental Specifications to the August 2001 Standard Specifications)*

- **QUESTIONS DURING BID ADVERTISEMENT:**

- QUESTIONS regarding any project are to be e-mailed to the e-mail address identified in the particular project bid proposal no less than six business days prior to the proposal opening date in order to receive a response. Responses to inquiries are posted on-line at <http://www.bids.delaware.gov>.



# CLOSING/QUESTIONS

- **FINANCIAL PLAN**

<http://www.deldot.gov/information/projects/us301/> :

## **Financial Due Diligence:**

**DeIDOT's financial approach includes securing two Construction bids, Contracts 1A and 2A, which represent about 55% of the estimated construction cost. This approach provides the opportunity to consider the reasonableness of assumed construction cost estimates, the final bond ratings, the current interest rates, etc. as part of the Financial Plan update, prior to the final decision regarding the sale of the toll revenue bonds.**



# CLOSING/QUESTIONS

- QUESTIONS:

