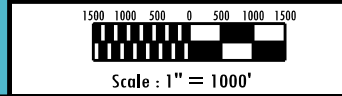
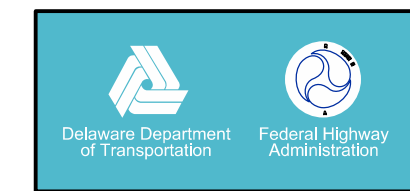


US 301 Project Development

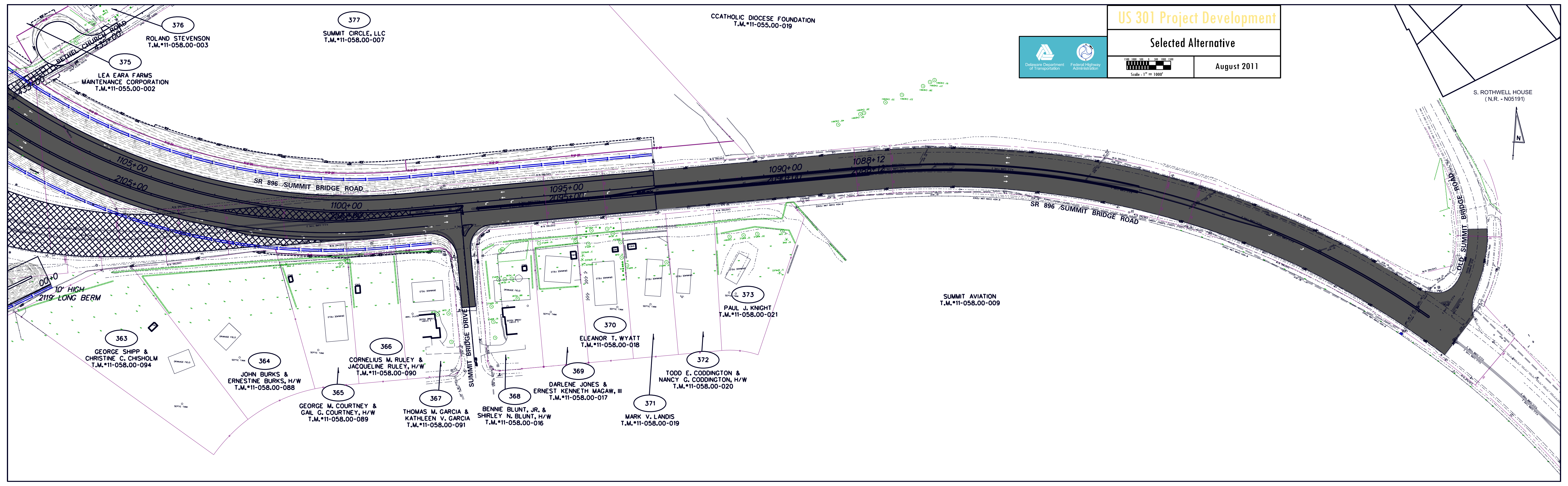
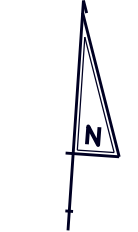
Selected Alternative

August 2011



CCATHOLIC DIOCESE FOUNDATION
T.M.#11-055.00-019

S. ROTHWELL HOUSE
(N.R. - N05191)



376 ROLAND STEVENSON
T.M.#11-058.00-003

377 SUMMIT CIRCLE, LLC
T.M.#11-058.00-007

375 LEA EARA FARMS
MAINTENANCE CORPORATION
T.M.#11-055.00-002

363 GEORGE SHIPP &
CHRISTINE C. CHISHOLM
T.M.#11-058.00-094

364 JOHN BURKS &
ERNESTINE BURKS, H/W
T.M.#11-058.00-088

365 GEORGE M. COURTNEY &
GAIL G. COURTNEY, H/W
T.M.#11-058.00-089

366 CORNELIUS M. RULEY &
JACQUELINE RULEY, H/W
T.M.#11-058.00-090

367 THOMAS M. GARCIA &
KATHLEEN V. GARCIA
T.M.#11-058.00-091

368 BENNIE BLUNT, JR. &
SHIRLEY N. BLUNT, H/W
T.M.#11-058.00-016

369 DARLENE JONES &
ERNEST KENNETH MAGAW, III
T.M.#11-058.00-017

370 ELEANOR T. WYATT
T.M.#11-058.00-018

371 MARK V. LANDIS
T.M.#11-058.00-019

372 TODD E. CODDINGTON &
NANCY G. CODDINGTON, H/W
T.M.#11-058.00-020

373 PAUL J. KNIGHT
T.M.#11-058.00-021

SUMMIT AVIATION
T.M.#11-058.00-009