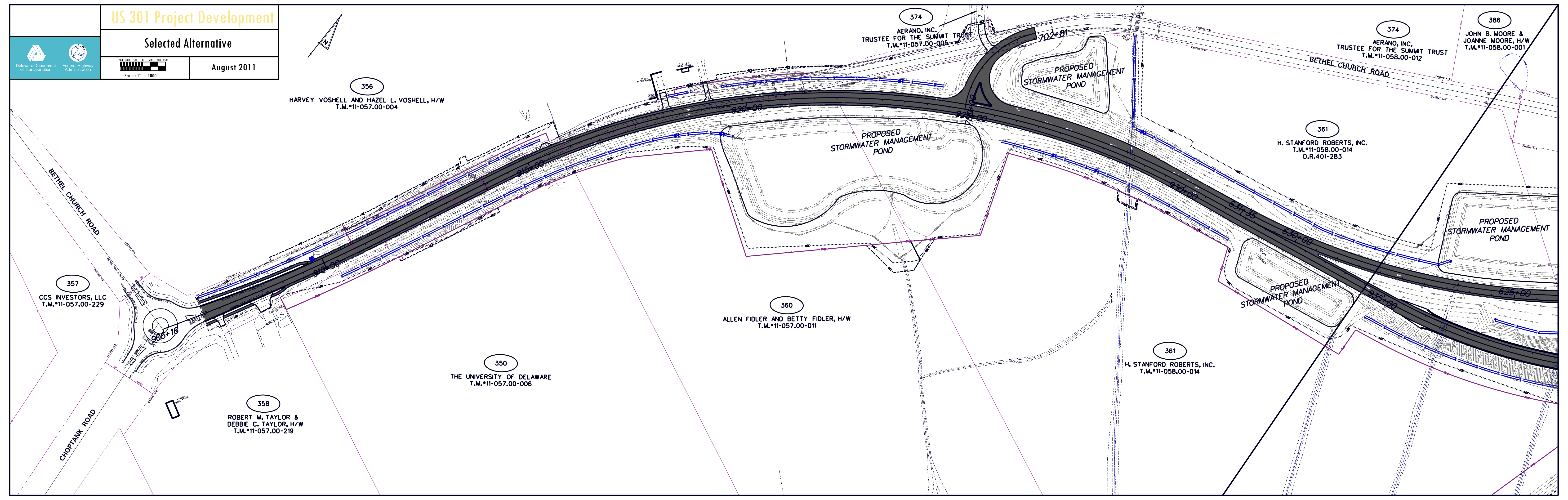
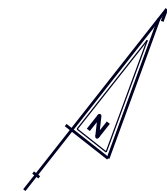
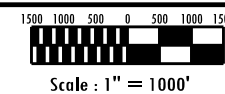


# US 301 Project Development

## Selected Alternative

August 2011



356

HARVEY VOSHELL AND HAZEL L. VOSHELL, H/W  
T.M.#11-057.00-004

374

AERANO, INC.  
TRUSTEE FOR THE SUMMIT TRUST  
T.M.#11-057.00-005

386

JOHN B. MOORE &  
JOANNE MOORE, H/W  
T.M.#11-058.00-001

374

AERANO, INC.  
TRUSTEE FOR THE SUMMIT TRUST  
T.M.#11-058.00-012

361

H. STANFORD ROBERTS, INC.  
T.M.#11-058.00-014  
D.R.401-283

357

CCS INVESTORS, LLC  
T.M.#11-057.00-229

360

ALLEN FIDLER AND BETTY FIDLER, H/W  
T.M.#11-057.00-011

361

H. STANFORD ROBERTS, INC.  
T.M.#11-058.00-014

350

THE UNIVERSITY OF DELAWARE  
T.M.#11-057.00-006

358

ROBERT M. TAYLOR &  
DEBBIE C. TAYLOR, H/W  
T.M.#11-057.00-219

BETHEL CHURCH ROAD

CHOPTANK ROAD

PROPOSED  
STORMWATER MANAGEMENT  
POND

PROPOSED  
STORMWATER MANAGEMENT  
POND

PROPOSED  
STORMWATER MANAGEMENT  
POND

PROPOSED  
STORMWATER MANAGEMENT  
POND

006+16

015+00

020+00

025+00

030+00

035+00

025+00

702+81

634+35

630+00

035+00