

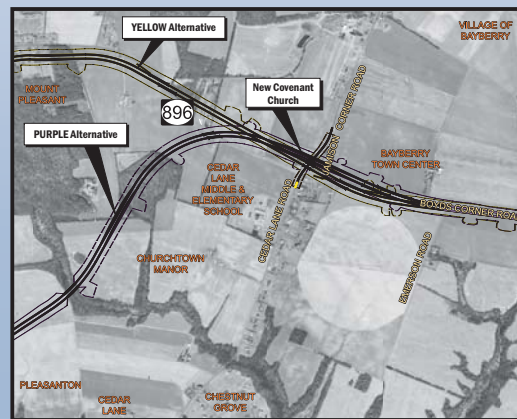
ALIGNMENT OPTIONS - BOYDS CORNER ROAD AREA

YELLOW AND PURPLE + SPUR

301 US 301 Project Development



Option 1



YELLOW and **PURPLE + SPUR**

Description

- Provides new US 301 alignment just north of existing SR 896 (Boys Corner Road – west of Jamisons Corner Road)

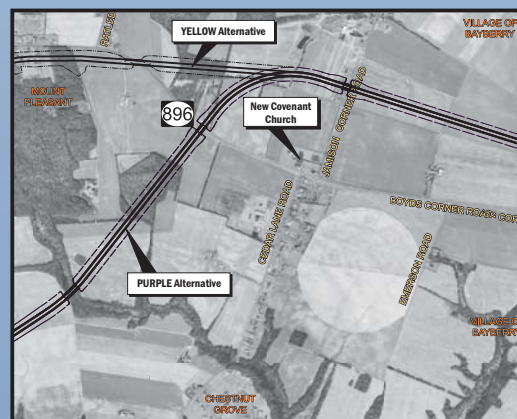
Advantage

- Leaves minimal “dead” space between Boys Corner Road and new US 301
- Minimizes impacts on proposed “Livable Delaware” Community (Bayberry)

Disadvantage

- Requires acquisition of New Covenant Church
- Results in difficult skew of new US 301 bridge over Boys Corner Road
- Direct impact on proposed Bayberry South community - South side of existing Boys Corner Road from east of Cedar Lane to Shallcross Lake Road
- Direct impact to southwest corner of proposed Bayberry Town Center
- New US 301 is elevated and creates barrier between proposed Bayberry South and Bayberry North / Bayberry Town Center

Option 2



YELLOW and **PURPLE + SPUR**

Description

- Shifts New US 301 alignment to 1,500 feet north of New Covenant Church and adjacent to north boundary of proposed Town Center (Bayberry)

Advantage

- Avoids New Covenant Church
- Provides improved skew of new US 301 bridge over Boys Corner Road
- Shifts new US 301 farther away from Cedar Lane Schools

Disadvantage

- Impacts southwest corner Grande View Farms community
- Results in greater wetland impacts than Option 1
- Isolates Church between Boys Corner Road, new US 301 and an improved Jamisons Corner Road
- New US 301 creates a barrier between proposed Bayberry South / Town Center and Bayberry North
- Increases length of new US 301 (increased costs)
- Requires long bridge structure over the intersection of Boys Corner Road, the entrance to Grande View Farms and Shellcross Road (increased costs and potential safety considerations)
- Decreases the distance between new US 301 and historic resources