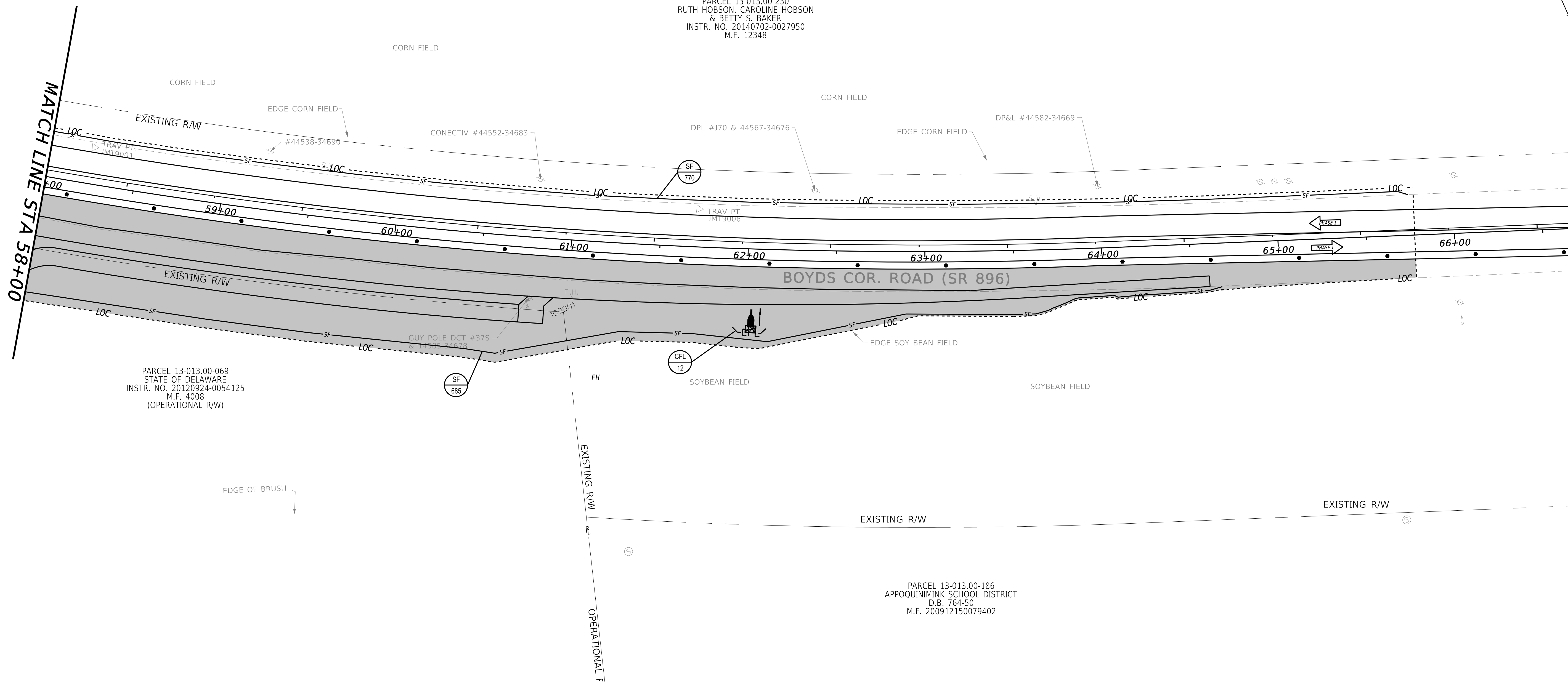


PARCEL 13-013.00-230  
 RUTH HOBSON, CAROLINE HOBSON  
 & BETTY S. BAKER  
 INSTR. NO. 20140702-0027950  
 M.F. 12348

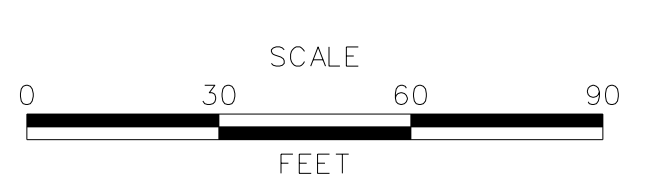
PARCEL 13-013.00-069  
 STATE OF DELAWARE  
 INSTR. NO. 20120924-0054125  
 M.F. 4008  
 (OPERATIONAL R/W)

PARCEL 13-013.00-186  
 APPOQUIMINK SCHOOL DISTRICT  
 D.B. 764-50  
 M.F. 200912150079402



12/15/2020  
 4:49:31 PM  
 O:\2018\1802769\_023\_Boyd\_Corner\_Road\_Ma\CADD\CS-Entrance.dgn  
 \$MODELNAME\$

ADDENDA / REVISIONS	



**CANAL EXPRESSWAYS  
 MAINTENANCE YARD  
 ENTRANCE PLAN**

CONTRACT	BRIDGE NO.	N/A
T201811302	DESIGNED BY:	CSR
COUNTY	CHECKED BY:	WJD
NEW CASTLE COUNTY		

**CONSTRUCTION PHASING,  
 M.O.T., AND EROSION  
 CONTROL PLAN**

SECTION
JMT
SHEET NO.