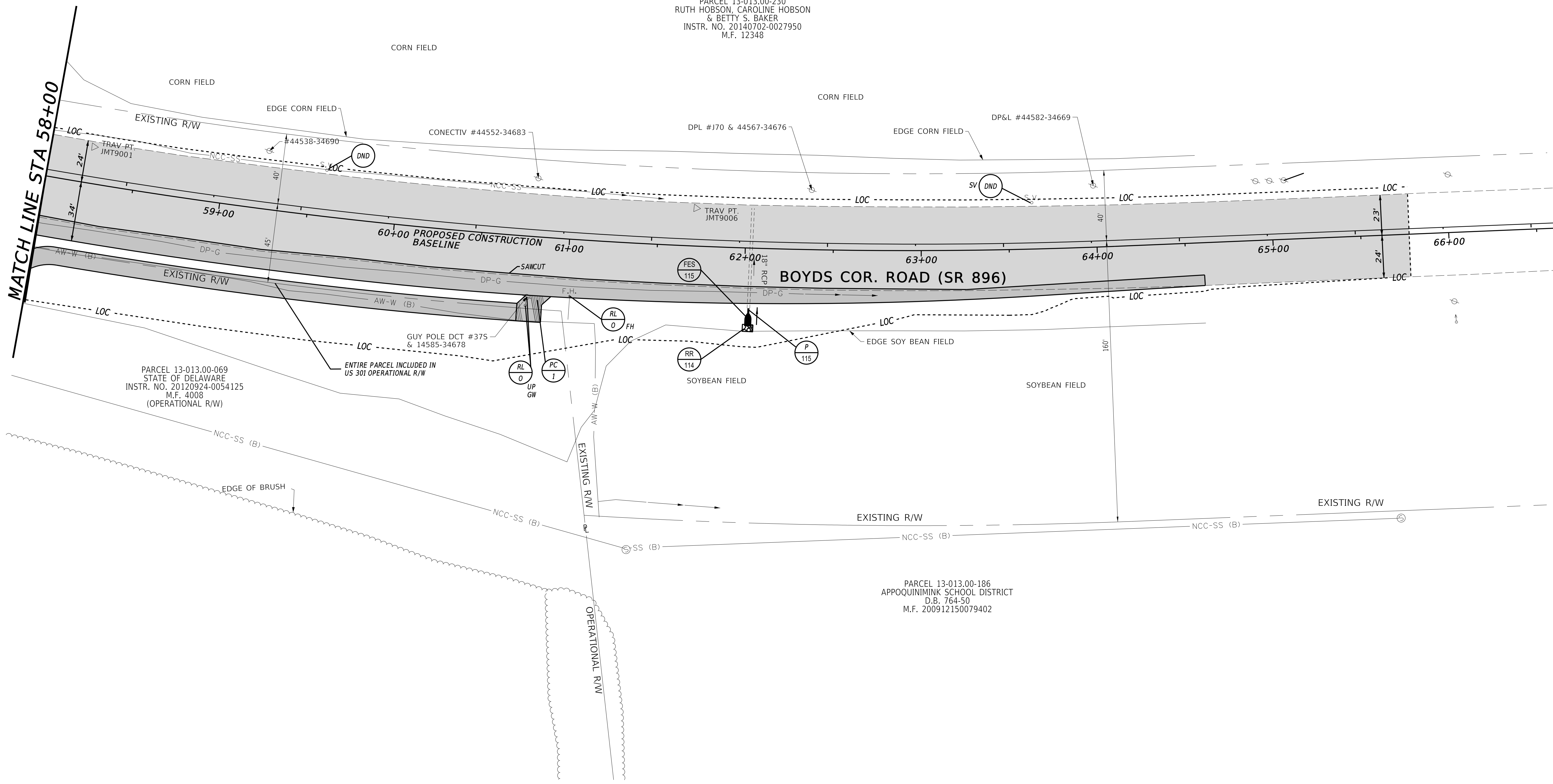


PARCEL 13-013.00-230  
RUTH HOBSON, CAROLINE HOBSON  
& BETTY S. BAKER  
INSTR. NO. 20140702-0027950  
M.F. 12348

PARCEL 13-013.00-069  
STATE OF DELAWARE  
INSTR. NO. 20120924-0054125  
M.F. 4008  
(OPERATIONAL R/W)

PARCEL 13-013.00-186  
APPOQUIMINK SCHOOL DISTRICT  
D.B. 764-50  
M.F. 200912150079402



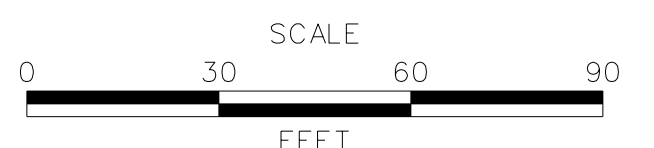
DRAINAGE PIPE SCHEDULE						
NO.	SIZE / TYPE	CLASS	LENGTH	SLOPE	INV. EL.	DIS. EL.
115	18" RCP	III	4	0.0030	63.14	63.13

FLARED END SECTION SCHEDULE			
NO.	SIZE / TYPE	SLOPE	SAFETY GRATE
115	18" RCP	0.0030	NO

RIPRAP STABILIZATION SCHEDULE				
NO.	TYPE	W	L	D
114	R-4	6'	4'	14"

12/15/2020  
4:17:23 PM  
O:\2018\1802769\_023\_Boyd\_Corner\_Road\_Ma\CADD\CP-Entrance.dgn  
\$MODELNAME\$

ADDENDA / REVISIONS



**CANAL EXPRESSWAYS  
MAINTENANCE YARD  
ENTRANCE PLAN**

CONTRACT	BRIDGE NO.	N/A		
T201811302	DESIGNED BY:	CSR		
COUNTY	CHECKED BY:	WJD		
NEW CASTLE COUNTY				

**CONSTRUCTION PLAN**

SECTION	JMT
SHEET NO.	