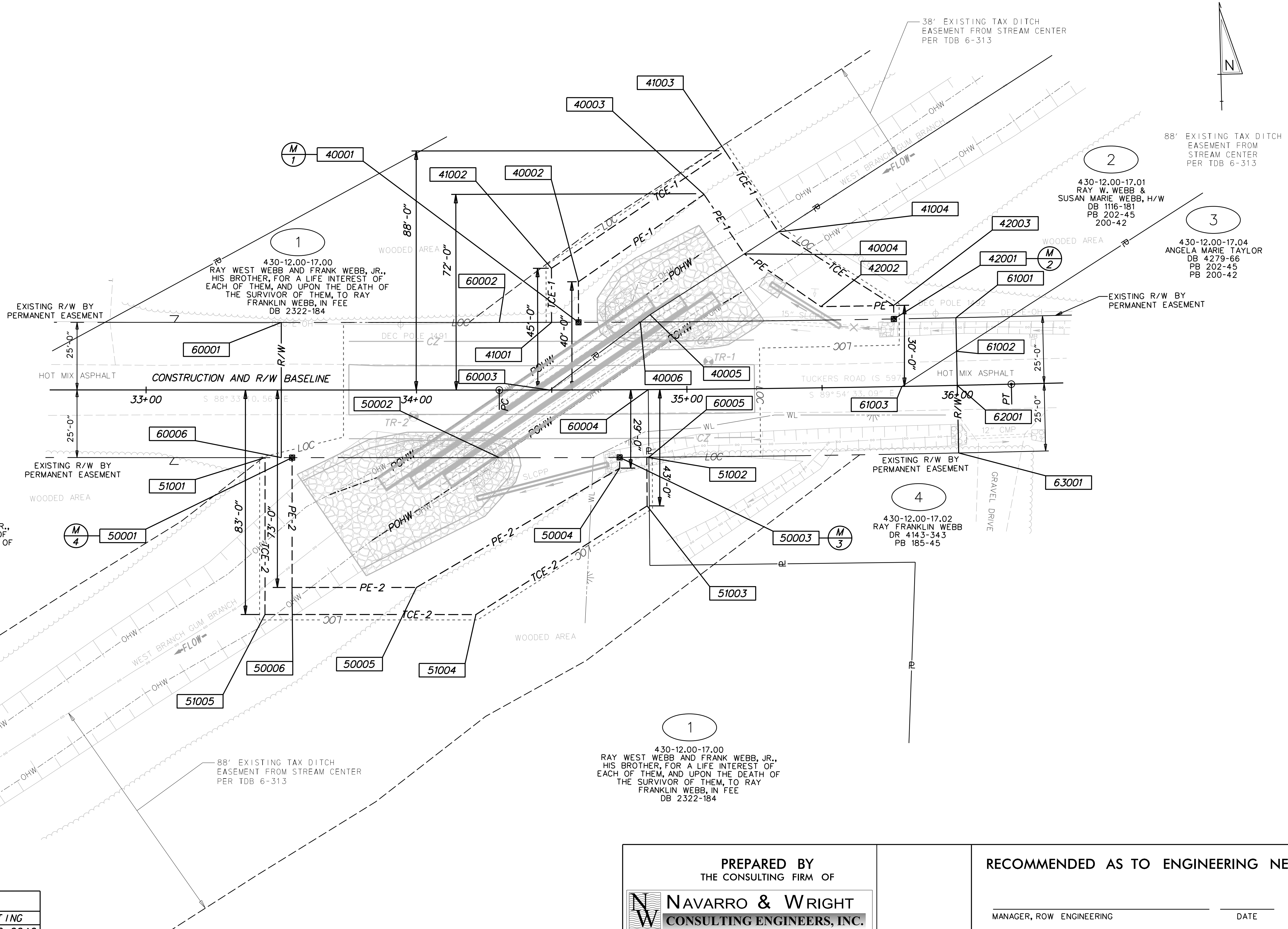
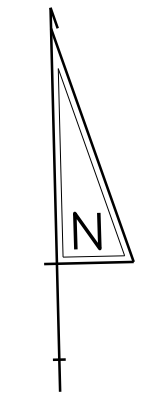


PLOTTED: 7/2/2019
 Z:\2017\1702MD027\...CULVERT_SITES\3-139_TUCKERS\CADD\MICROSTATION\ROADWAY\RW-12_3-139.DGN



1
 430-12.00-17.00
 RAY WEST WEBB AND FRANK WEBB, JR.,
 HIS BROTHER, FOR A LIFE INTEREST OF
 EACH OF THEM, AND UPON THE DEATH OF
 THE SURVIVOR OF THEM, TO RAY
 FRANKLIN WEBB, IN FEE
 DB 2322-184

2
 430-12.00-17.01
 RAY W. WEBB &
 SUSAN MARIE WEBB, H/W
 DB 1116-181
 PB 202-45
 200-42

3
 430-12.00-17.04
 ANGELA MARIE TAYLOR
 DB 4279-66
 PB 202-45
 PB 200-42

4
 430-12.00-17.02
 RAY FRANKLIN WEBB
 DR 4143-343
 PB 185-45

1
 430-12.00-17.00
 RAY WEST WEBB AND FRANK WEBB, JR.,
 HIS BROTHER, FOR A LIFE INTEREST OF
 EACH OF THEM, AND UPON THE DEATH OF
 THE SURVIVOR OF THEM, TO RAY
 FRANKLIN WEBB, IN FEE
 DB 2322-184

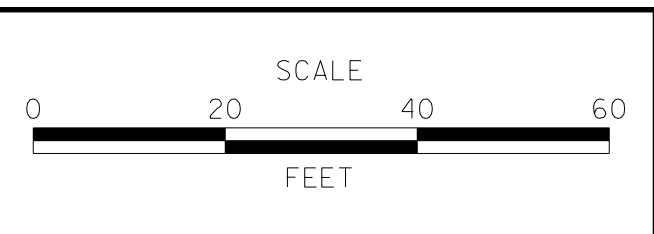
RIGHT-OF-WAY MONUMENT SCHEDULE					
NO.	TYPE	STATION	OFFSET	NORTHING	EASTING
M1	CAPPED REBAR	34+60.00	-25.00	281818.4218	624682.6046
M2	CAPPED REBAR	35+77.00	-25.00	281816.7573	624799.2209
M3	CAPPED REBAR	34+75.00	25.00	281768.1228	624696.5663
M4	CAPPED REBAR	33+54.00	25.00	281771.0585	624575.4660

NOTE: THE "LOC" AND "TCE" IS THE SAME LINE BUT THE "LOC" IS SHOWN OFFSET 2' FOR CLARITY

PREPARED BY THE CONSULTING FIRM OF NAVARRO & WRIGHT CONSULTING ENGINEERS, INC.		RECOMMENDED AS TO ENGINEERING NEED	
2935 SOUTH DUPONT BLVD SMYRNA, DE 19977 (877) 441-2216		SEAL	DATE
RECOMMENDED	DATE	MANAGER, ROW ENGINEERING	DATE
		PROGRAM MANAGER, TEAM SUPPORT	DATE
		TECHNICAL REVIEWER, TEAM SUPPORT	DATE



ADDENDUMS / REVISIONS



**DESIGN-BUILD STATEWIDE
 PIPE REPLACEMENT PROJECT
 (BR 3-139 ON TUCKERS ROAD)**

CONTRACT	BRIDGE NO.	3-139
T201707002	DESIGNED BY:	HLW
COUNTY	CHECKED BY:	KSJ
SUSSEX		

RIGHT-OF-WAY PLAN		SHEET NO.
		12
		TOTAL SHTS.
		13