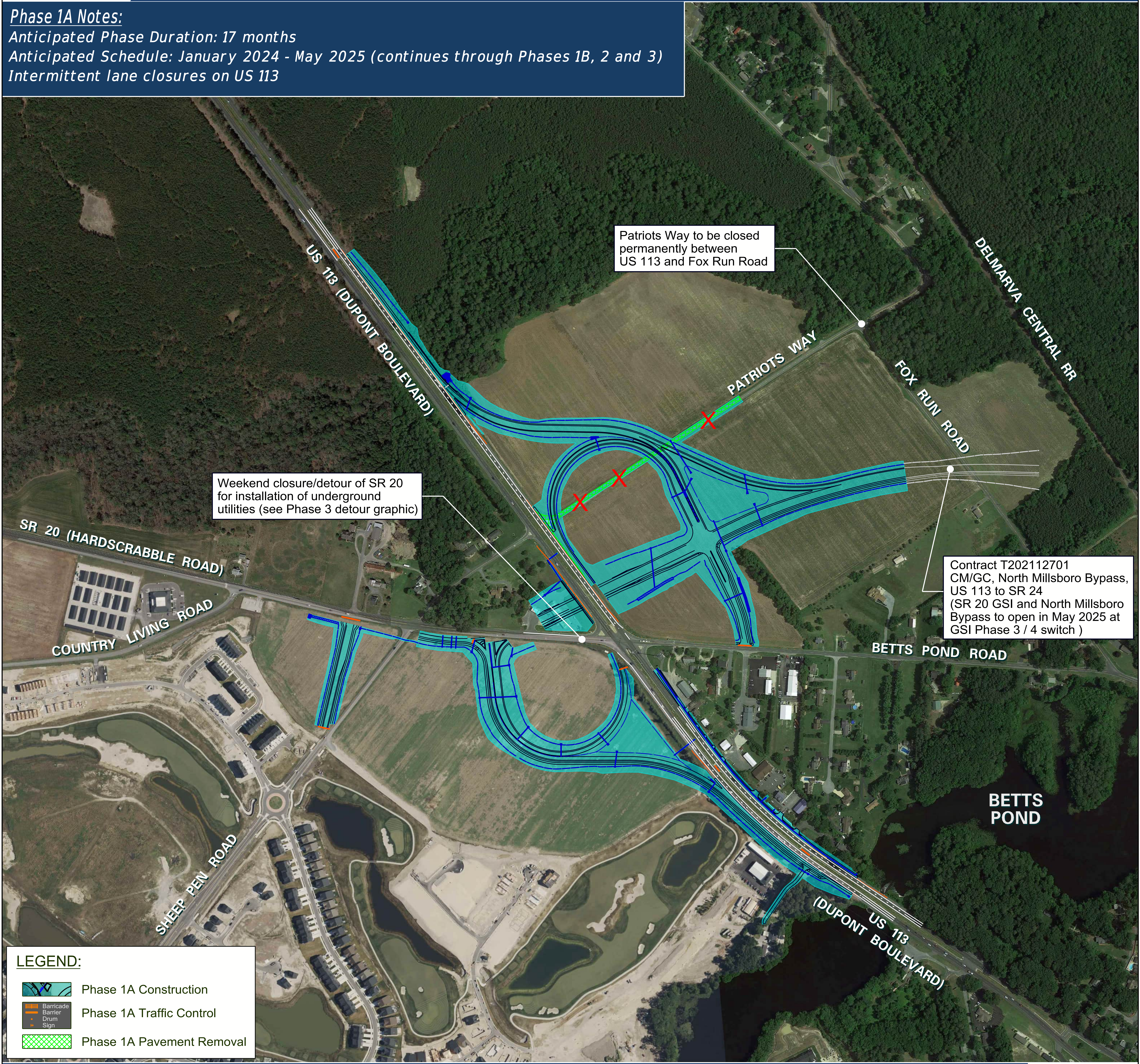


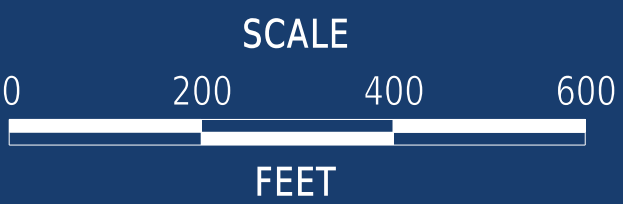


Phase 1A Notes:  
Anticipated Phase Duration: 17 months  
Anticipated Schedule: January 2024 - May 2025 (continues through Phases 1B, 2 and 3)  
Intermittent lane closures on US 113



**LEGEND:**

- Phase 1A Construction
- Phase 1A Traffic Control
- Phase 1A Pavement Removal







Phase 1B Notes:  
Anticipated Phase Duration: 4 months  
Anticipated Schedule: May 2024 - September 2024  
Overnight closures/detours of US 113 NB and SB for overhead bridge construction

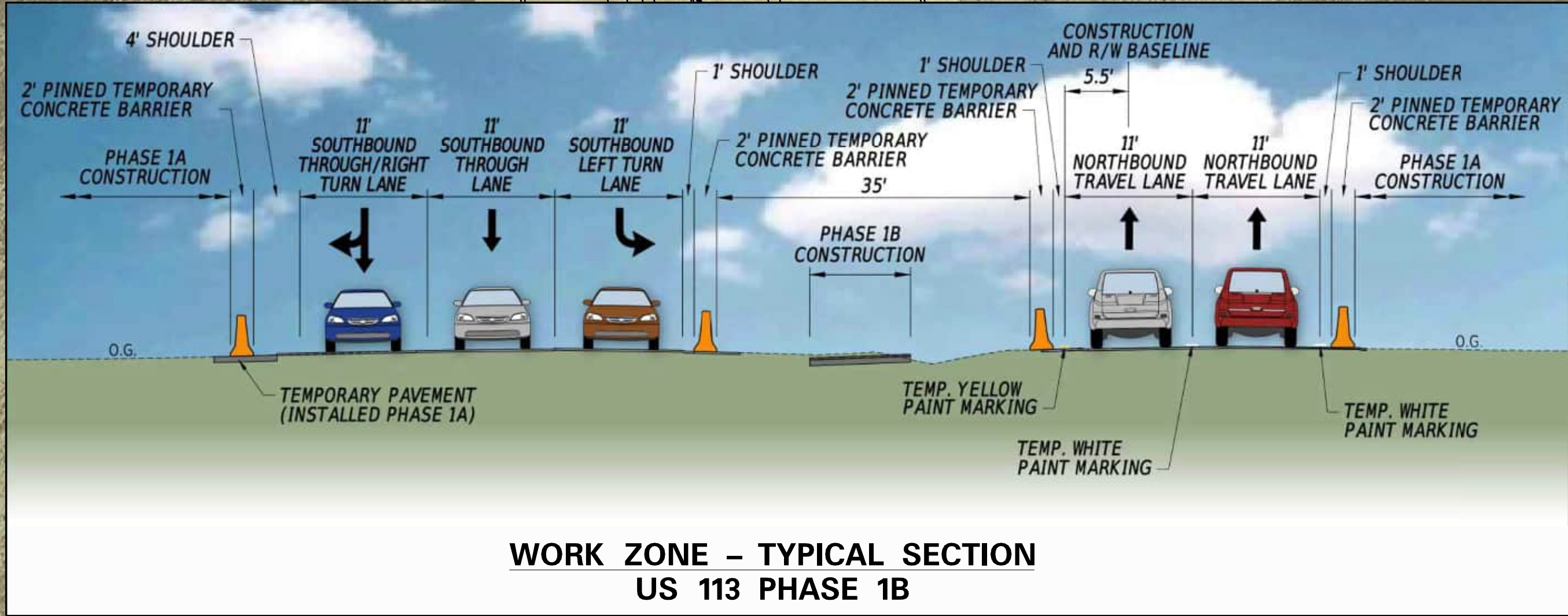
Shift US 113 SB lanes to outside shoulder to provide room for median bridge pier construction

US 113 SB right turns to Sheep Pen Road from shared through lane

US 113 SB right turns to SR 20 from shared through lane

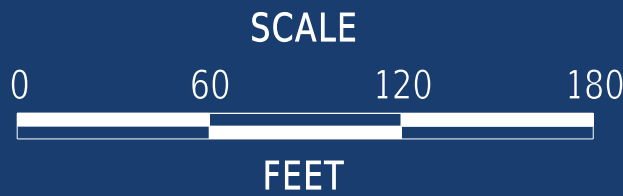
Phase 1B median bridge pier construction

US 113 NB right turns to Betts Pond Road from shared through lane



**LEGEND:**

- Phase 1B Construction
- Concurrent Phase 1A Construction
- Phase 1B Traffic Control (Barricade, Drum, Sign)
- Phase 1B Pavement Removal

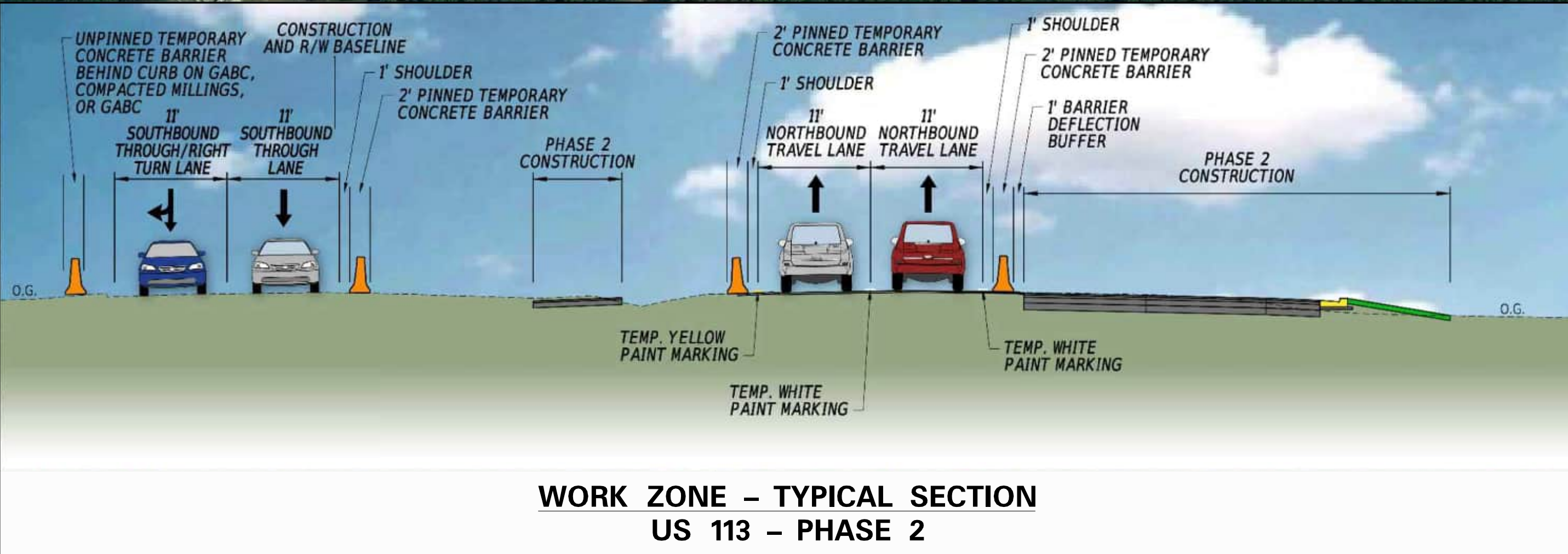






Phase 2 Notes:

Anticipated Phase Duration: 1.5 months  
Anticipated Schedule: September 2024 - November 2024  
Full closure/detour of Betts Pond Road at US 113



Contract T202112701  
CM/GC, North Millsboro Bypass,  
US 113 to SR 24  
(SR 20 GSI and North Millsboro  
Bypass to open in May 2025 at  
GSI Phase 3 / 4 switch )

Continue construction of North  
Millsboro Bypass bridge over US 113

ROAD CLOSED  
AHEAD  
LOCAL TRAFFIC ONLY

Betts Pond Road closed at US 113 for  
the duration of Phase 2 and Phase 3  
(see detour graphic)

Construct proposed Betts Pond Road  
cul-de-sac (local access maintained  
via Betts Pond Road)

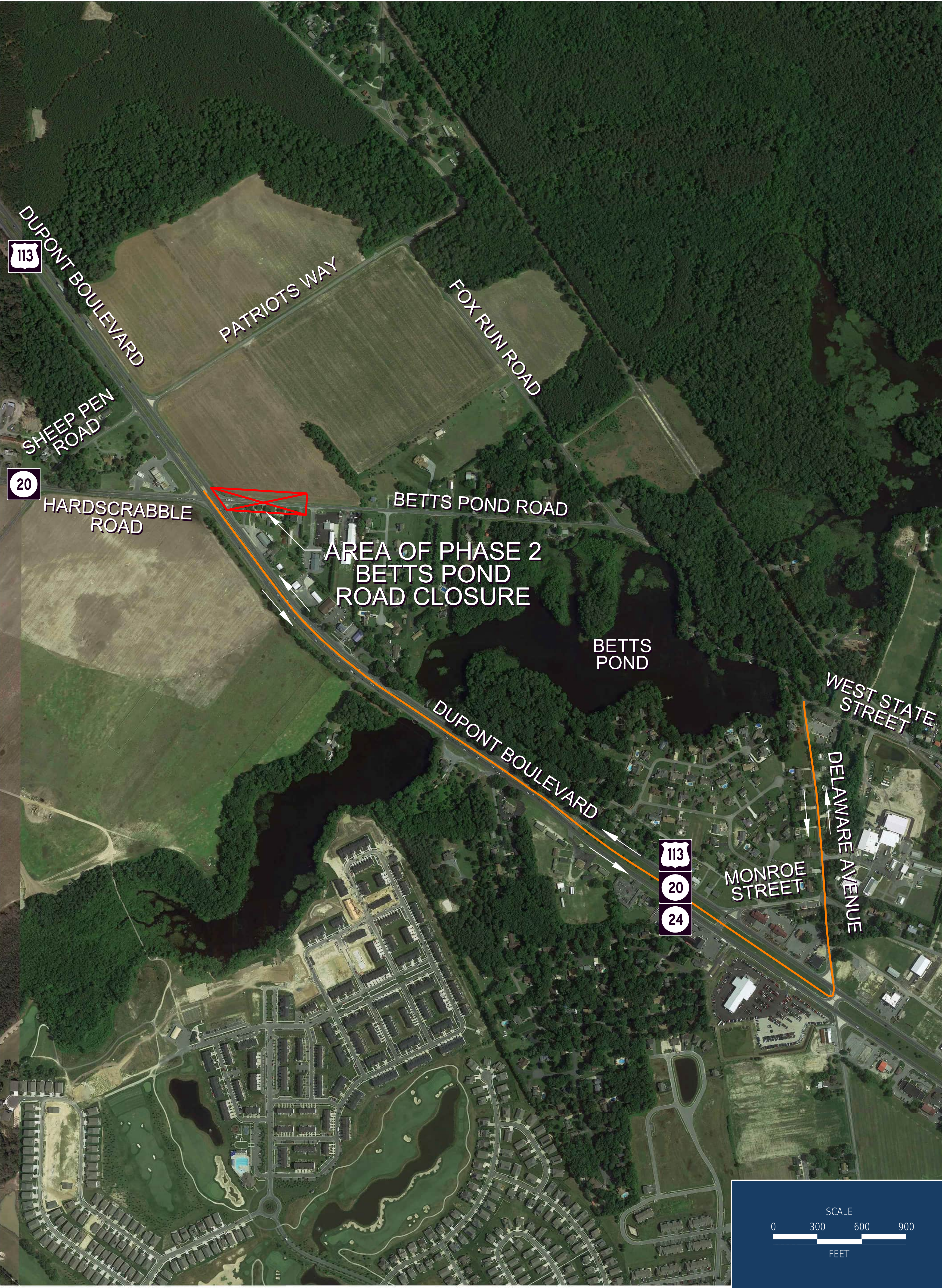
Construct US 113 NB  
off-ramp tie-in

LEGEND:

- Phase 2 Construction
- Concurrent Phase 1A Construction
- Phase 2 Traffic Control
- Phase 2 Pavement Removal







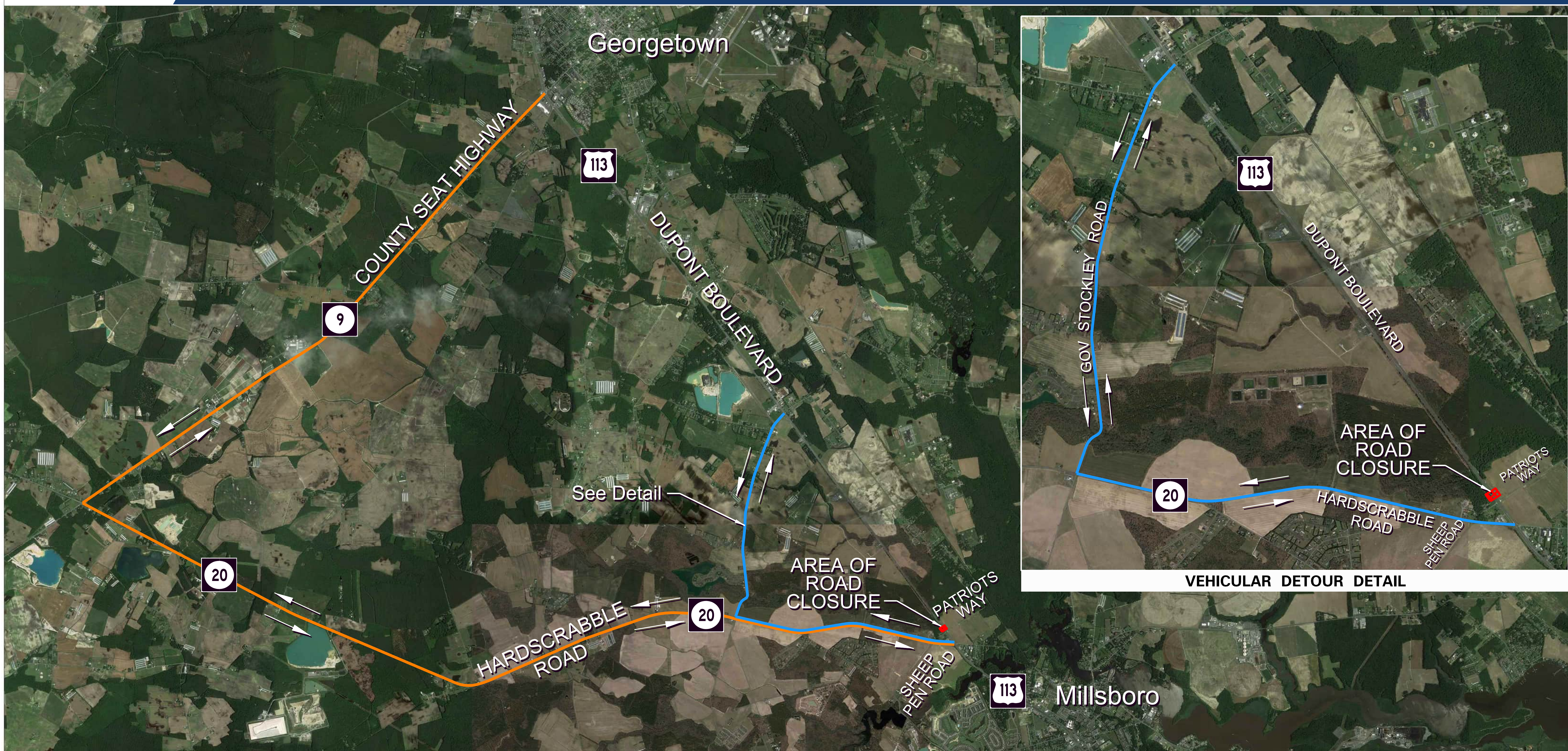
Betts Pond Road Detour Notes:

Approximate Phase 2 detour duration (full closure of Betts Pond Road; maintained through Phase 3) = 9 months (September 2024 - May 2025)



FEBRUARY 2024

# PHASE 1B and PHASE 2 - US 113 DETOUR



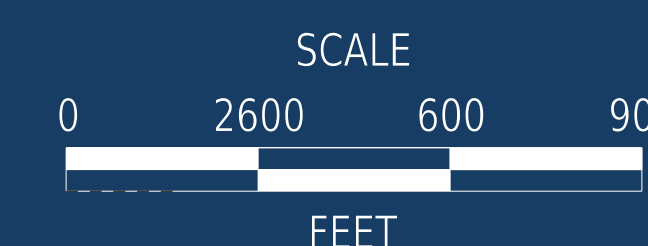
## Phases 1B and 2 Detour Notes:

Approximate duration = 1 month

Overnight closures only for overhead bridge construction (10PM - 6AM, Monday - Thursday only)

US 113 NB and SB will not be closed simultaneously

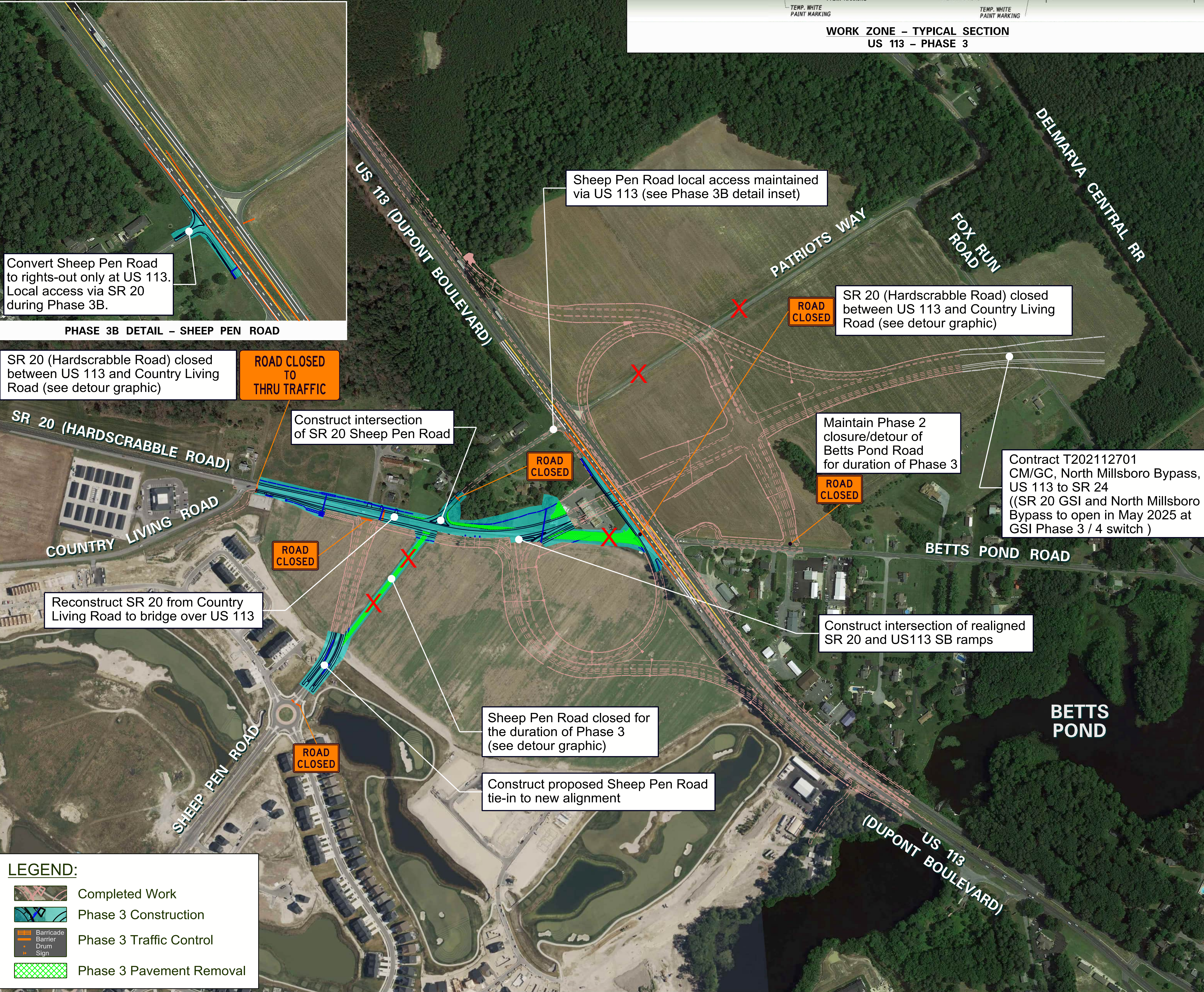
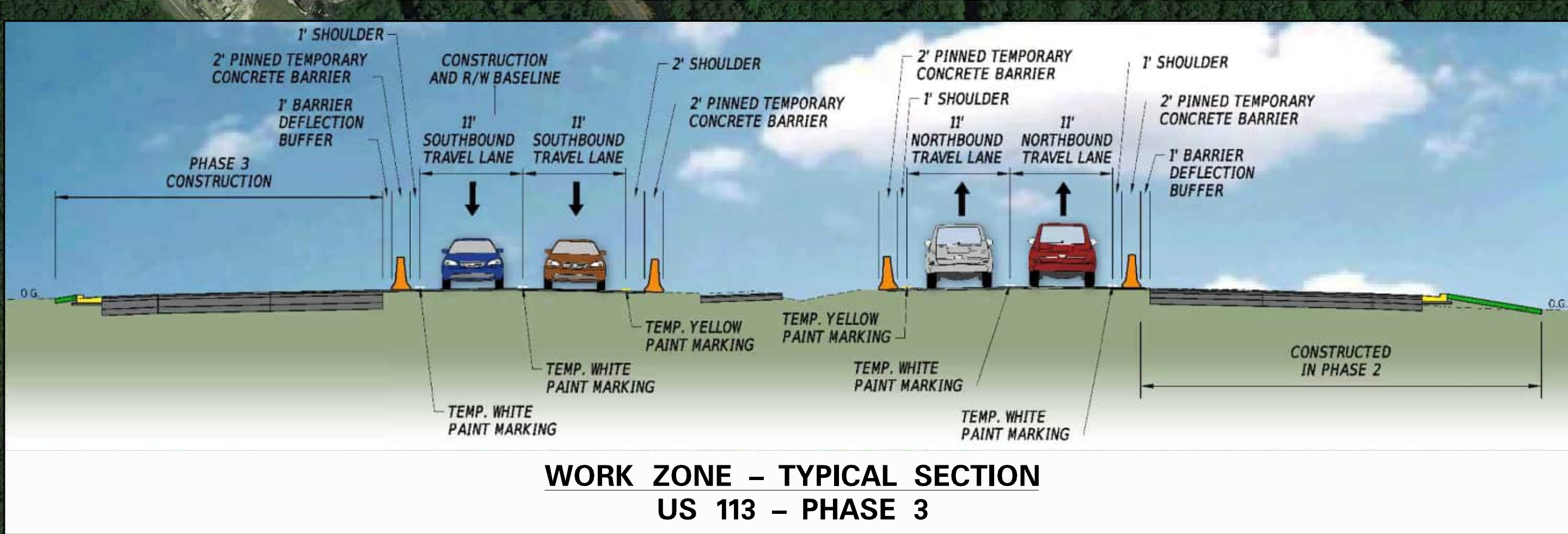
Orange = Truck Detour Route, Blue = Vehicular Detour Route





Phase 3 Notes:

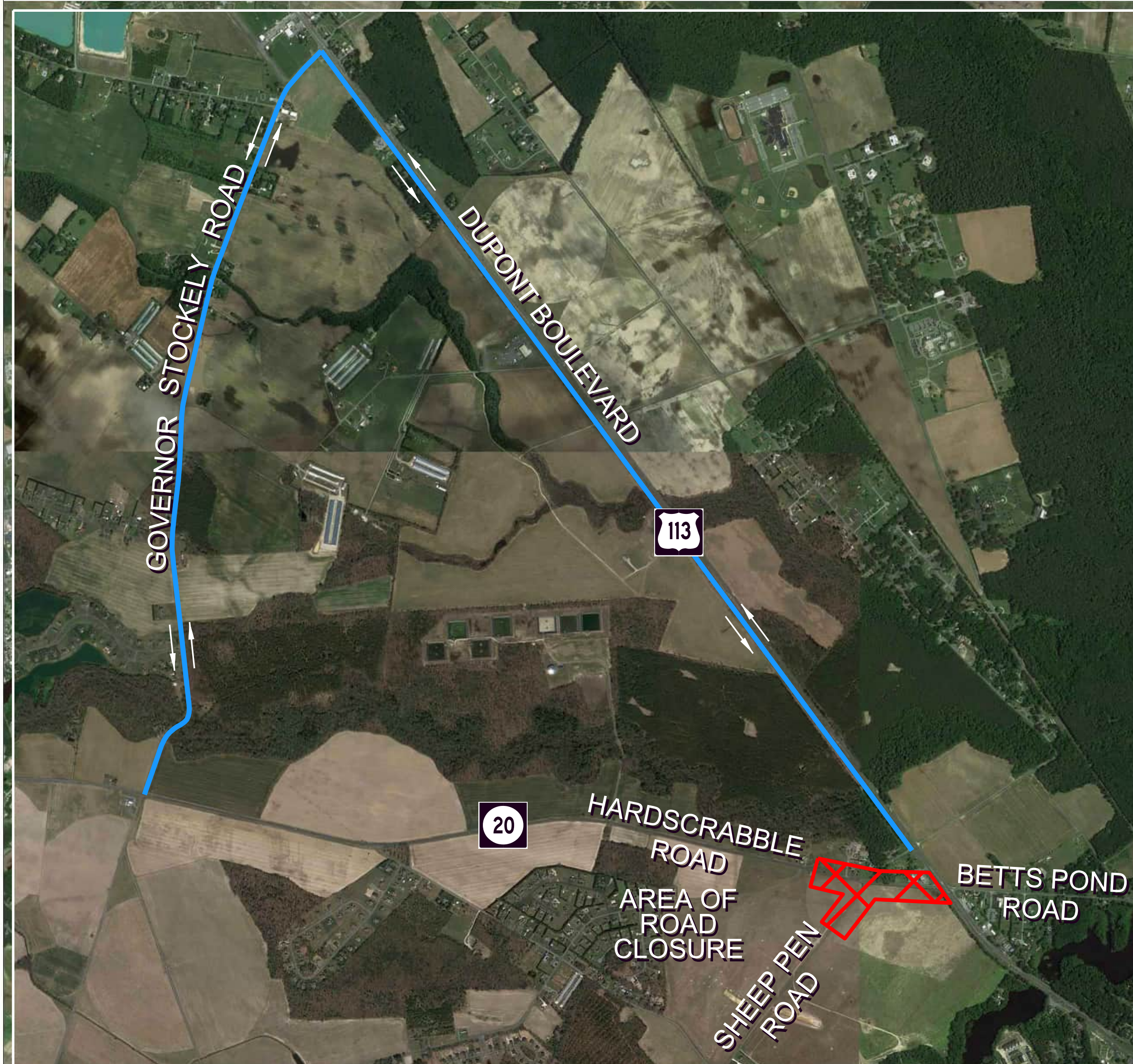
Anticipated Phase Duration: 7 months  
Anticipated Schedule: November 2024 - May 2025  
Full closure/detour of SR 20 (Hardscrabble Road) and Sheep Pen Road  
Betts Pond Road Phase 2 detour to remain in effect for the duration of Phase 3



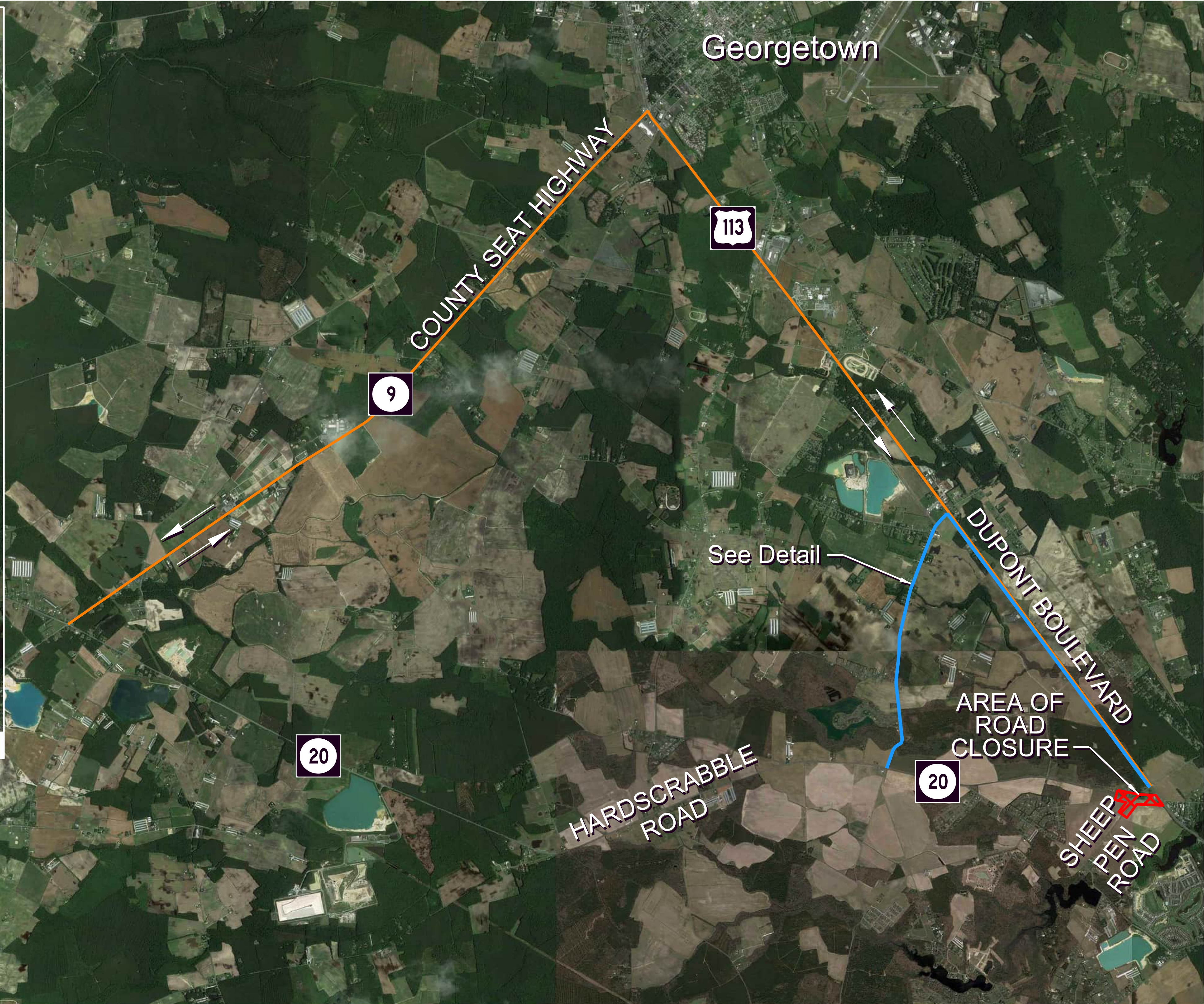


FEBRUARY 2024

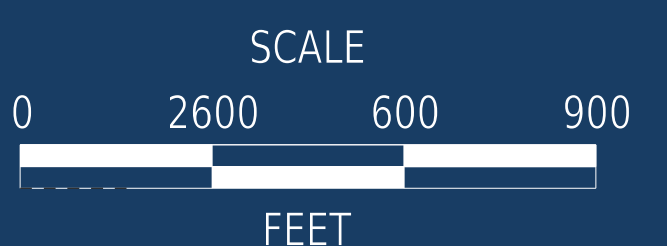
# PHASE 3 - SR 20 (HARDSCRABBLE AND SHEEP PEN ROAD) DETOUR



VEHICULAR DETOUR DETAIL

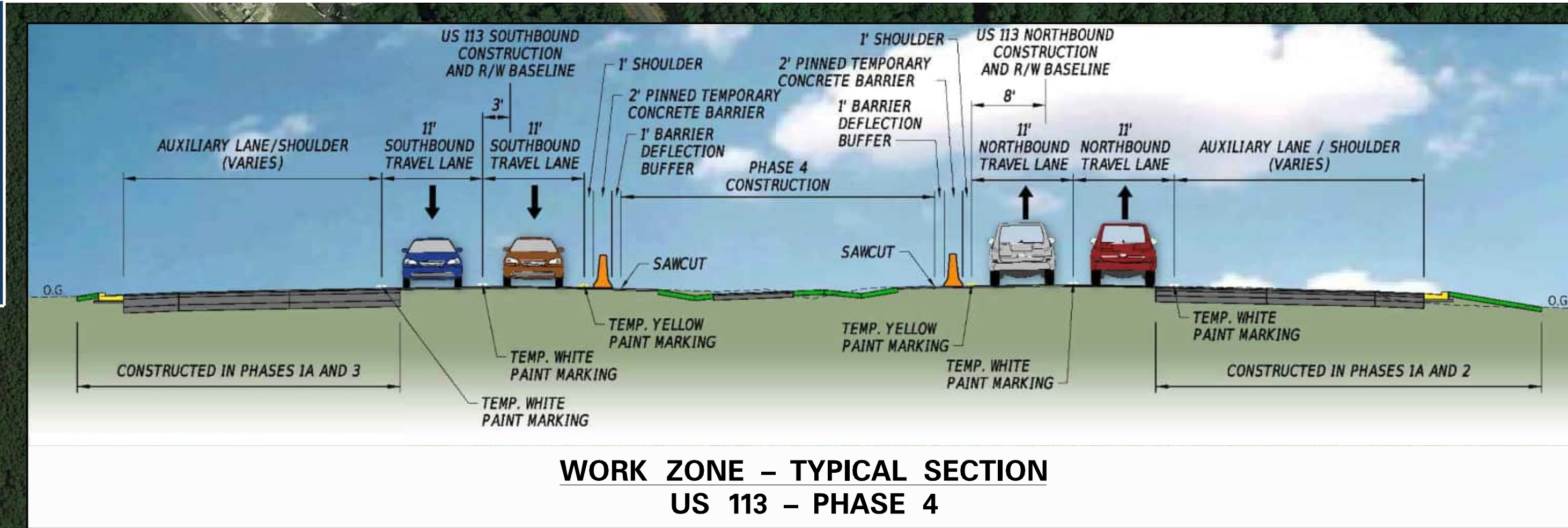


SR 20 (Hardscrabble and Sheep Pen Road) Detour Notes:  
Approximate duration = 7 months (November 2024 - May 2025)  
Orange = Truck Detour Route, Blue = Vehicular Detour Route





Phase 4 Notes:  
Anticipated Phase Duration: 2 months  
Anticipated Schedule: June 2025 - July 2025  
US 113 / SR 20 interchange and North Millsboro Bypass open to traffic  
at start of Phase 4



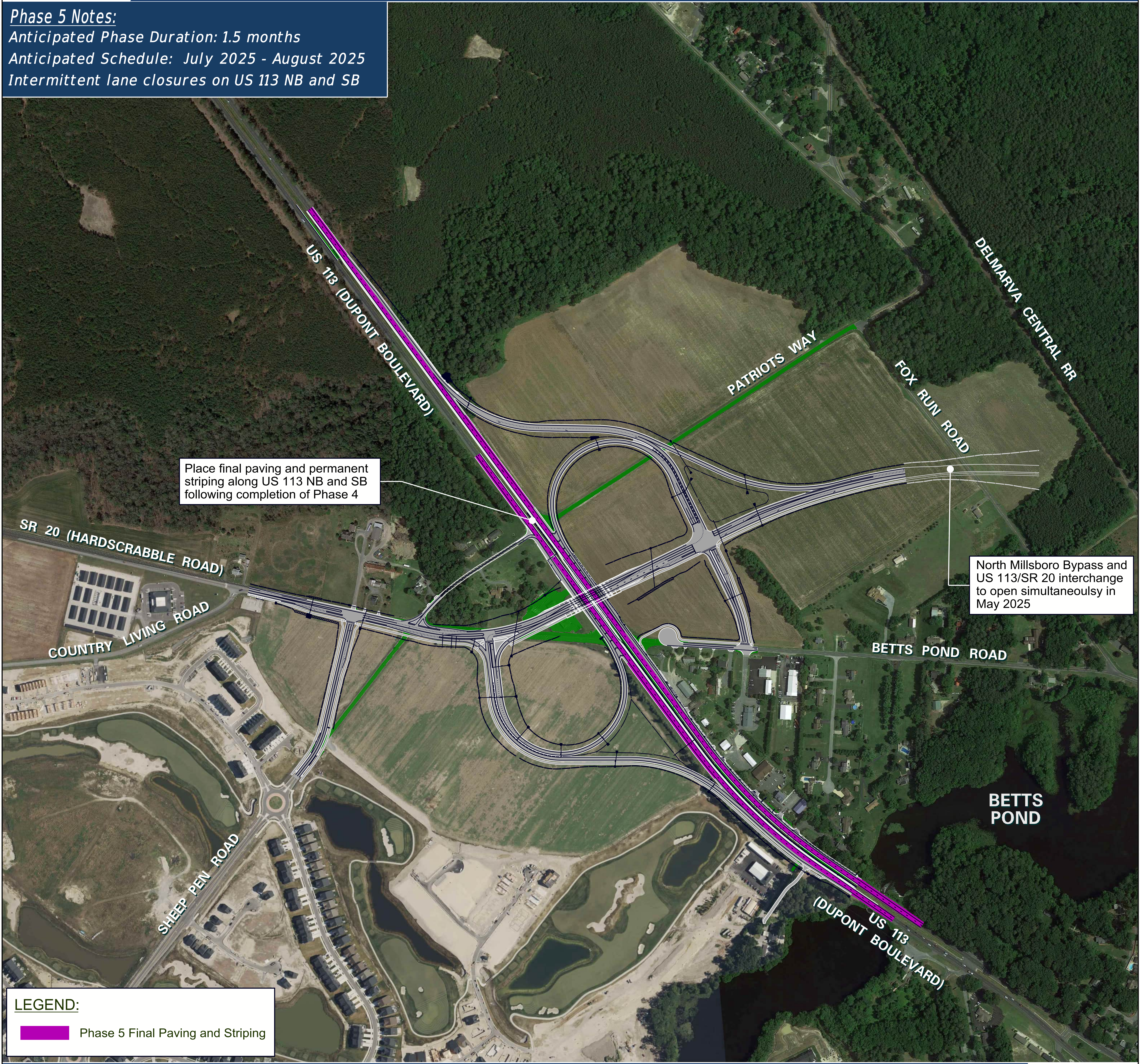
**LEGEND:**

- Phase 4 Construction
- Phase 4 Traffic Control
- Phase 4 Pavement Removal






Phase 5 Notes:  
Anticipated Phase Duration: 1.5 months  
Anticipated Schedule: July 2025 - August 2025  
Intermittent lane closures on US 113 NB and SB



**LEGEND:**

 Phase 5 Final Paving and Striping

