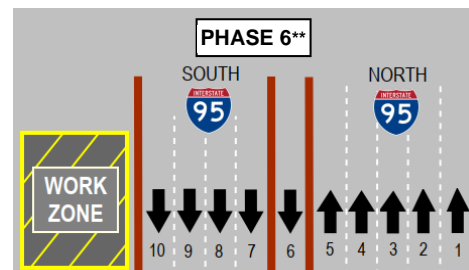
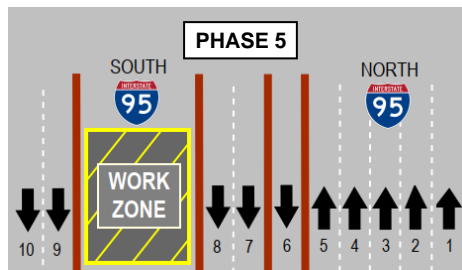
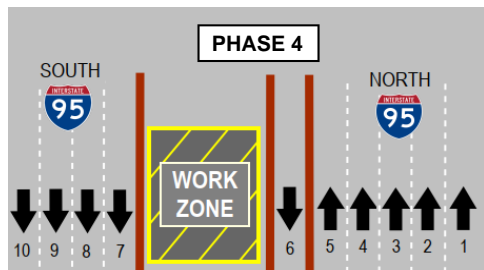
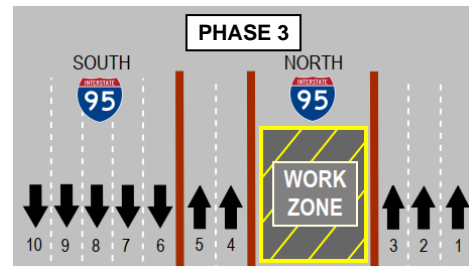
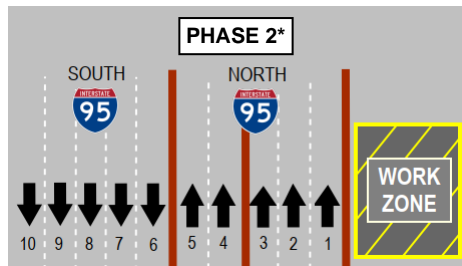
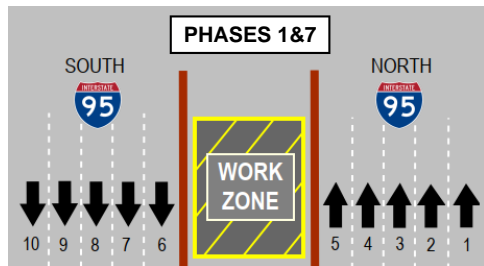


# Rehabilitation of Bridges 1-719, 1-720, 1-738, and 1-739 on I-95

## Incident Management Informational Visor Card – **ZONE 1**



\* I-95 NB right shoulder closed from SR 1/Cabela's on-ramp to the Airport Road off-ramp, approx. 6,600 feet

\*\* I-95 SB right shoulder closed from salt barn to Churchman's Road off-ramp, approx. 8,500 feet



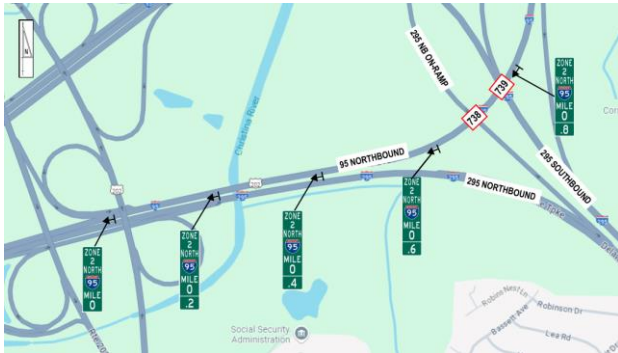
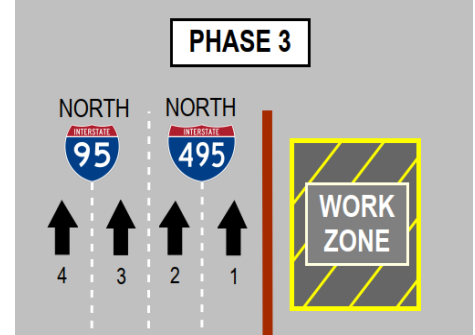
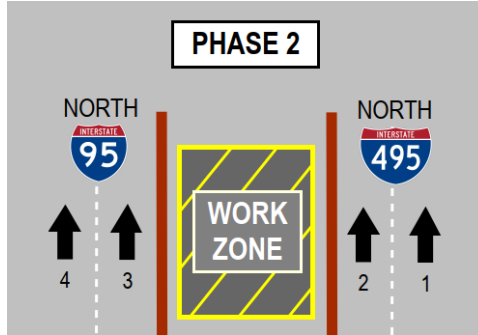
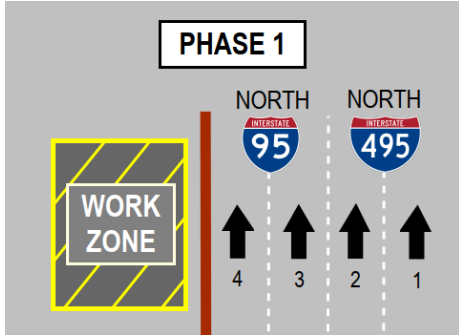
Scan code for  
project  
webpage



Scan code  
DeIDOT  
Cameras



## Rehabilitation of Bridges 1-719, 1-720, 1-738, and 1-739 on I-95 Incident Management Informational Visor Card – **ZONE 2**



**Scan code for  
project  
webpage**



**Scan code  
DelDOT  
Cameras**

